

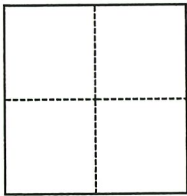
# CORNER RECORD

Agency Index DPW # 19-038  
 Document Number ADJ 121-240-14

City of NICASIO County of MARIN, California  
 Brief Legal Description IRON PIPE SHOWN ON MAP 7 OS 14.

### CORNER TYPE

### COORDINATES (Optional)



- Government Corner
- Meander
- Rancho
- Control
- Property
- Other

Date of Survey MARCH 15, 2019

N. \_\_\_\_\_ E. \_\_\_\_\_  
 Elevation \_\_\_\_\_  
 Units  Metric  U.S. Survey Foot  
 Horizontal Datum \_\_\_\_\_  
 Zone \_\_\_\_\_ Epoch Date \_\_\_\_\_  
 Vertical Datum \_\_\_\_\_  
 Complies with Public Resources Code §§8801-8819  
 Complies with Public Resources Code §§8890-8902

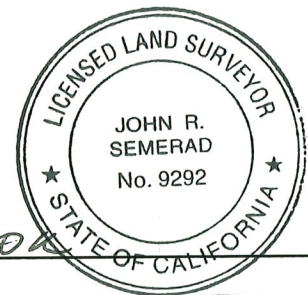
PLS Act Ref.:  8765(d)  8771  8773  Other:  
 Corner/Monument:  Left as found  Established  Rebuilt  Pre-Construction  
 Found and tagged  Reestablished  Referenced  Post-Construction

Narrative of corner identified and monument as found, set, reset, replaced, or removed:  
 See sheet #2 for description(s):

FOUND IRON PIPE SHOWN ON MAP 7 OS 14 NEAR LOT 8 AS SHOWN ON MAP 2 PM 57. SET FOUR REFERENCE TIES; RE-ESTABLISHED WITH COUNTY OF MARIN WELL MONUMENT PER UCS DWG #300. (SEE ATTACHED SKETCH) NO DETERMINATION WAS MADE AS TO THE VALIDITY OF THE MONUMENT SHOWN HEREON OR ITS RELATION TO PROPERTY LINES IN THE AREA.

### SURVEYOR'S STATEMENT

This Corner Record was prepared by me or under my direction in conformance with the Professional Land Surveyors' Act on 06/20/22  
 Signed [Signature] P.L.S. or P.C.E. No. 9292



### COUNTY SURVEYOR'S STATEMENT

This Corner Record was received MAY 9, 2019  
 and examined and filed 6/20/22  
 Signed T.W. Park P.L.S. or P.C.E. No. 8176  
 Title County Surveyor

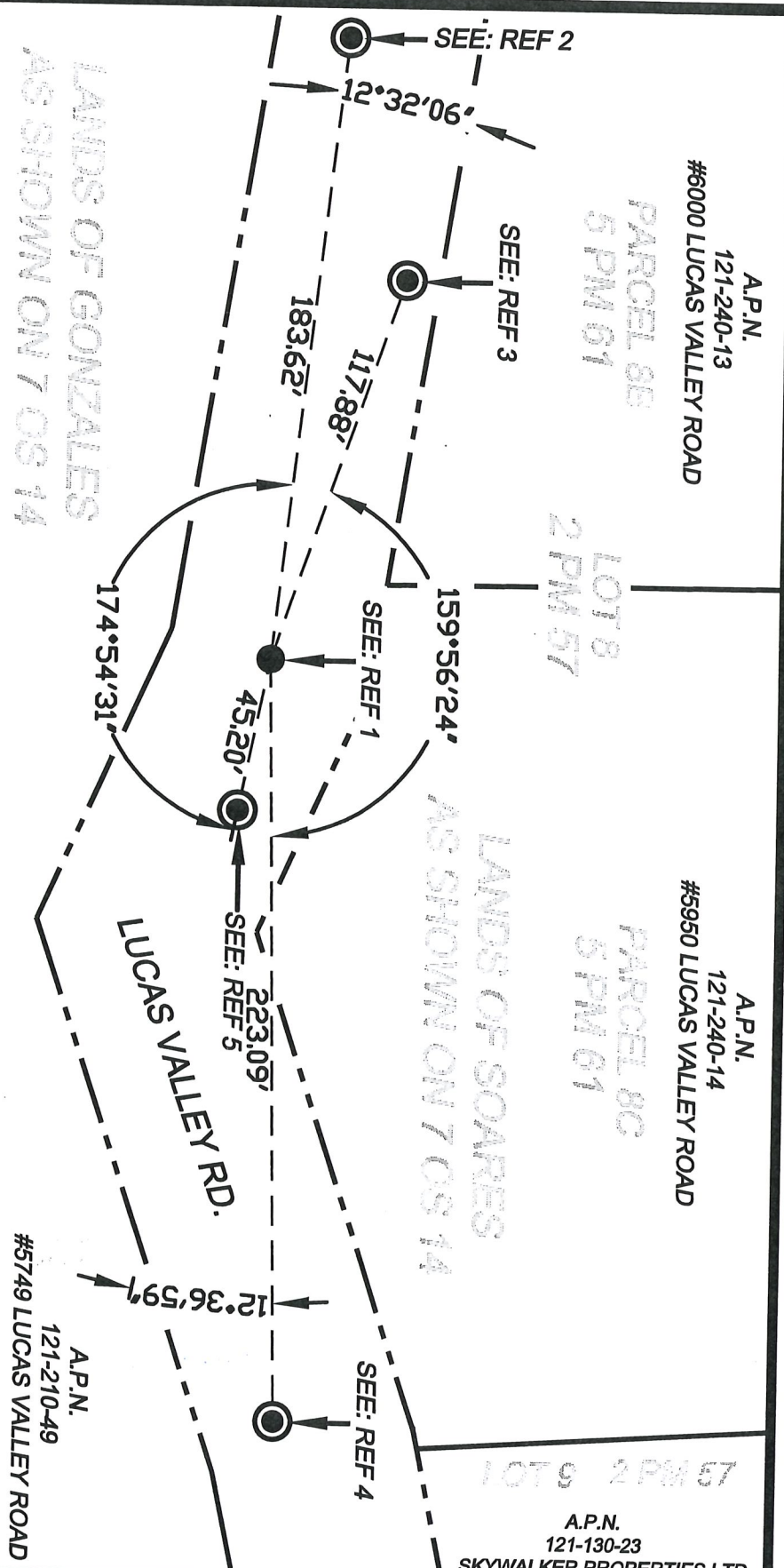


County Surveyor's Comment

- REF 1: FOUND IRON PIPE AND TAG IN WELL MONUMENT STAMPED R.E. NO. 8424 PER 7 OS 14 REPLACED WITH STANDARD COUNTY MONUMENT PER UNIFORM CONSTRUCTION STANDARDS DRAWING #300.
- REF 2: SET HUB AND WASHER STAMPED "MARIN COUNTY SURVEYOR" ON SHOULDER OF ROAD.
- REF 3: SET NAIL AND WASHER STAMPED "MARIN COUNTY SURVEYOR" IN ASPHALT DRIVEWAY.
- REF 4: SET HUB AND WASHER STAMPED "MARIN COUNTY SURVEYOR" ON SHOULDER OF ROAD.
- REF 5: SET HUB AND WASHER STAMPED "MARIN COUNTY SURVEYOR" ON SHOULDER OF ROAD.

LANDS OF GONZALES AS SHOWN ON 7 OS 14

LANDS OF SOARES AS SHOWN ON 7 OS 14



7 OS 14

COUNTY OF MARIN  
DEPARTMENT OF PUBLIC WORKS  
SURVEY SECTION

SCALE: 1" = 50'

CORNER RECORD

JOB No. 2018-026

A.P.N. 121-130-23  
SKYWALKER PROPERTIES LTD