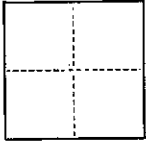


### CORNER RECORD

COUNTY OF MARIN T. \_\_\_\_\_ R. \_\_\_\_\_ MOUNT DIABLO MERIDIAN CALIFORNIA

CORNER TYPE: GOV'T. CORNER  MEANDER  RANCHO  CONTROL  OTHER

CORNER IDENTIFICATION — DATE OF VISIT JUNE 28 1986



SOUTHEASTERLY CORNER OF PARCEL 8A, 5 PM 61

CORNER — LEFT AS FOUND  FOUND AND TAGGED  REESTABLISHED OBLITERATED CORNER  REBUILT

PHYSICAL DESCRIPTION OF CORNER FOUND; EVIDENCE AND METHOD USED TO IDENTIFY OR REESTABLISH

CORNER MONUMENT APPARANTLY DESTROYED DURING CONSTRUCTION. REESTABLISHED UTILIZING FOUND MONUMENTS ALONG LUCAS VALLEY ROAD, PER "PARCEL MAP OF DIVISION OF LOT 8-BULL TAIL RANCH", FILED JANUARY 13, 1971 IN BOOK 5 OF PARCEL MAPS AT PAGE 61 IN THE OFFICE OF THE COUNTY RECORDER OF MARIN COUNTY, CALIFORNIA.

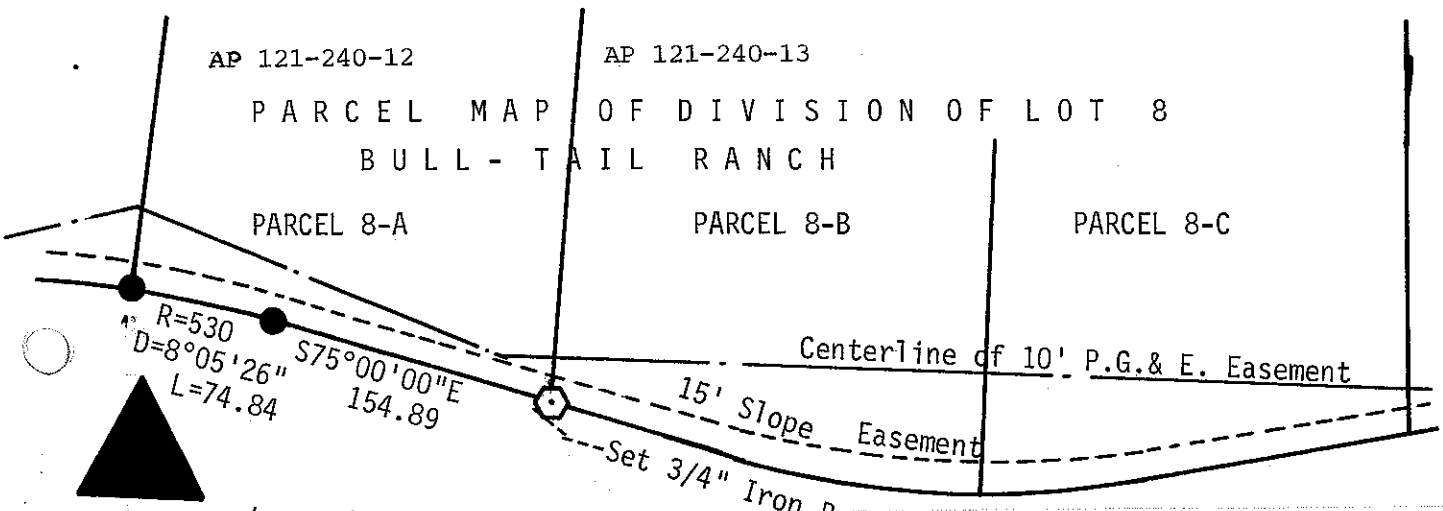
PHYSICAL DESCRIPTION OF MONUMENTS REBUILT OR PERPETUATED

3/4" IRON ROD WITH BRASS TAG, RCE24059

CALIFORNIA COORDINATE SYSTEM ORDER: FIRST  SECOND  THIRD   
STATIONS USED: NGS (USC & GS)  STATE  COUNTY  OTHER  STATION \_\_\_\_\_ STATION \_\_\_\_\_  
ZONE \_\_\_\_\_ ELEVATION \_\_\_\_\_ NORTHINGS (Y) \_\_\_\_\_ EASTINGS (X) \_\_\_\_\_

(Fold)

SKETCH: (Include reference tie or witness points, remarks and topo of area)



1" = 100'



LUCAS

VALLEY

ROAD

rod with Brass Tag, RCE24059

SURVEYOR'S CERTIFICATE

THIS CORNER RECORD WAS PREPARED BY LAVERNE STAMMONS IN CONFORMANCE WITH THE STANDARDS AND PRACTICES OF THE SURVEYORS BOARD OF THE STATE OF CALIFORNIA. ON JULY 1 1986 SIGNED: LaVerne Stammons L.S. or R.C.E. No.: R.C.E. 24059



LICENSE EXPIRATION DATE JAN. 31, 1989

COUNTY SURVEYOR'S CERTIFICATE

THE CORNER RECORD WAS RECEIVED July 10 1986 AND EXAMINED AND FILED July 24 1986 BY Charles F. Merritt COUNTY SURVEYOR. DOCUMENT ON BACK OF SHEET. STATEMENT ON BACK OF SHEET.  NO  YES



Exp. 6-30-89