

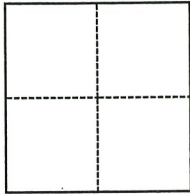
# CORNER RECORD

Agency Index DRW #19-100  
 Document Number ADJ 121-210-32 ADJ

City of NICASIO County of MARIN, California  
 Brief Legal Description 3/4" IRON PIPE SHOWN ON 7 OS 73.

### CORNER TYPE

### COORDINATES (Optional)



- Government Corner     Control  
 Meander                     Property  
 Rancho                         Other

N. \_\_\_\_\_ E. \_\_\_\_\_  
 Elevation \_\_\_\_\_  
 Units     Metric             U.S. Survey Foot  
 Horizontal Datum \_\_\_\_\_  
 Zone \_\_\_\_\_ Epoch Date \_\_\_\_\_  
 Vertical Datum \_\_\_\_\_  
 Complies with Public Resources Code §§8801-8819  
 Complies with Public Resources Code §§8890-8902

Date of Survey July 15, 2019

- PLS Act Ref.:     8765(d)             8771             8773             Other:  
 Corner/  
 Monument:     Left as found             Established             Rebuilt             Pre-Construction  
                    Found and tagged         Reestablished         Referenced         Post-Construction

Narrative of corner identified and monument as found, set, reset, replaced, or removed:  
 See sheet #2 for description(s):

FOUND 3/4" IRON PIPE SHOWN ON 7 OS 73 NEAR TRACT A . SET FOUR REFERENCE TIES; RE-ESTABLISHED WITH COUNTY OF MARIN WELL MONUMENT PER UCS DWG #300. (SEE ATTACHED SKETCH) NO DETERMINATION WAS MADE AS TO THE VALIDITY OF THE MONUMENT SHOWN HERON OR ITS RELATION TO PROPERTY LINES IN THE AREA.

### SURVEYOR'S STATEMENT

This Corner Record was prepared by me or under my direction in conformance with the Professional Land Surveyors' Act on 06/20/22  
 Signed [Signature] P.L.S. or P.C.E. No. 9292



### COUNTY SURVEYOR'S STATEMENT

This Corner Record was received 9/5/2019  
 and examined and filed 6/20/22  
 Signed T.W. Park P.L.S. or P.C.E. No. 8176  
 Title County Surveyor  
 County Surveyor's Comment \_\_\_\_\_



LANDS OF LANDS OF  
LUCAS FILM LTD.  
AS SHOWN ON 2003 RS 23

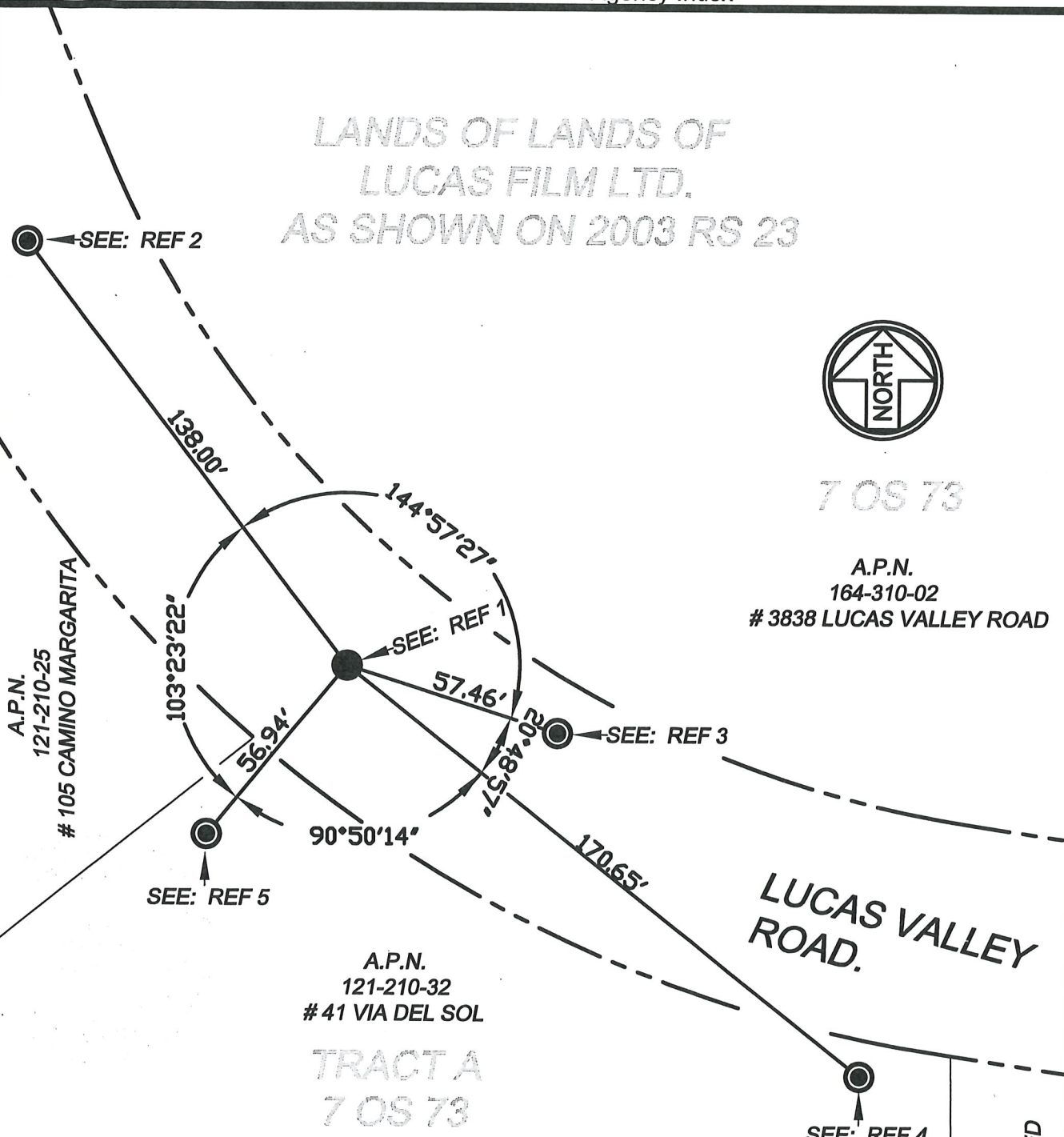


7 OS 73

A.P.N.  
164-310-02  
# 3838 LUCAS VALLEY ROAD

A.P.N.  
121-210-32  
# 41 VIA DEL SOL

TRACT A  
7 OS 73



- REF 1: FOUND  $\frac{3}{4}$ " IRON PIPE NO TAG 2" UNDER THE ASPHALT PER 7 OS 14 REPLACED WITH STANDARD COUNTY MONUMENT PER UNIFORM CONSTRUCTION STANDARDS DRAWING #300.
- REF 2: SET HUB AND WASHER STAMPED "MARIN COUNTY SURVEYOR" ON SIDE OF UTILITY POLE.
- REF 3: SET HUB AND WASHER STAMPED "MARIN COUNTY SURVEYOR" ON SHOULDER OF ROAD.
- REF 4: SET HUB AND WASHER STAMPED "MARIN COUNTY SURVEYOR" ON SHOULDER OF ROAD.
- REF 5: SET HUB AND WASHER STAMPED "MARIN COUNTY SURVEYOR" ON SHOULDER OF ROAD.

A.P.N.  
164-320-01  
UNINCORPORATED

COUNTY OF MARIN  
DEPARTMENT OF PUBLIC WORKS  
SURVEY SECTION

SCALE: 1"=40'

CORNER RECORD

JOB No. 2018-026