

CORNER RECORD

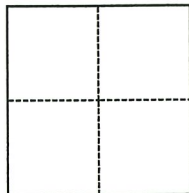
Agency Index DPW #19-099
 Document Number ADJ 121-210-25 ADJ

City of NICASIO County of MARIN, California

Brief Legal Description 3/4" IRON PIPE SHOWN ON 7 OS 73.

CORNER TYPE

COORDINATES (Optional)



- Government Corner
- Meander
- Rancho
- Control
- Property
- Other

Date of Survey July 15, 2019

N. _____ E. _____

Elevation _____

Units Metric U.S. Survey Foot

Horizontal Datum _____

Zone _____ Epoch Date _____

Vertical Datum _____

- Complies with Public Resources Code §§8801-8819
- Complies with Public Resources Code §§8890-8902

PLS Act Ref.: 8765(d) 8771 8773 Other:

Corner/Monument: Left as found Established Rebuilt Pre-Construction
 Found and tagged Reestablished Referenced Post-Construction

Narrative of corner identified and monument as found, set, reset, replaced, or removed:

See sheet #2 for description(s):

FOUND 3/4" IRON PIPE SHOWN ON 7 OS 73 NEAR TRACT B . SET FOUR REFERENCE TIES; RE-ESTABLISHED WITH COUNTY OF MARIN STANDARD WELL MONUMENT PER UCS DWG #300. (SEE ATTACHED SKETCH) NO DETERMINATION WAS MADE AS TO THE VALIDITY OF THE MONUMENT SHOWN HERON OR ITS RELATION TO PROPERTY LINES IN THE AREA.

SURVEYOR'S STATEMENT

This Corner Record was prepared by me or under my direction in conformance with the Professional Land Surveyors' Act on 06/20/22
 Signed [Signature] P.L.S. or R.C.E. No. 9292



COUNTY SURVEYOR'S STATEMENT

This Corner Record was received 9/5/2019
 and examined and filed 6/20/22
 Signed T. W. Park P.L.S. or R.C.E. No. 8176
 Title County Surveyor



County Surveyor's Comment



7 OS 73

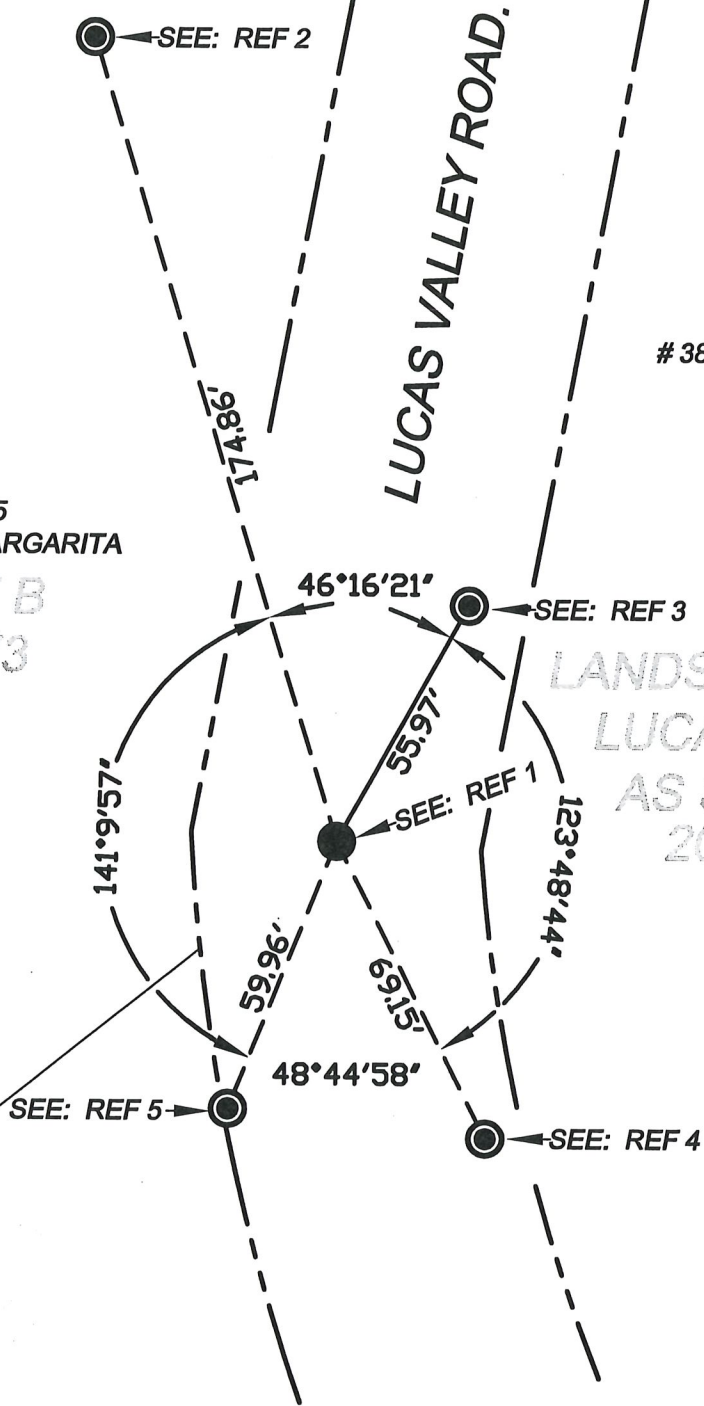
A.P.N.
164-310-02
3838 LUCAS VALLEY ROAD

LUCAS VALLEY ROAD.

A.P.N.
121-210-25
105 CAMINO MARGARITA

TRACT B
7 OS 73

LANDS OF LANDS OF
LUCAS FILM LTD.
AS SHOWN ON
2003 RS 23



A.P.N.
121-210-32
41 VIA DEL SOL

TRACT A
7 OS 73

- REF 1: FOUND 3/4" IRON PIPE NO TAG 2" UNDER THE ASPHALT PER 7 OS 14 REPLACED WITH STANDARD COUNTY MONUMENT PER UNIFORM CONSTRUCTION STANDARDS DRAWING #300.
- REF 2: SET HUB AND WASHER STAMPED "MARIN COUNTY SURVEYOR" ON SIDE OF UTILITY POLE.
- REF 3: SET NAIL AND WASHER STAMPED "MARIN COUNTY SURVEYOR" ON 24" DIA TREE STUMP.
- REF 4: SET HUB AND WASHER STAMPED "MARIN COUNTY SURVEYOR" ON SHOULDER OF ROAD.
- REF 5: SET HUB AND WASHER STAMPED "MARIN COUNTY SURVEYOR" ON SIDE OF 10" DIA BAY TREE.

COUNTY OF MARIN
DEPARTMENT OF PUBLIC WORKS
SURVEY SECTION

SCALE: 1"=40' CORNER RECORD

JOB No. 2018-026