

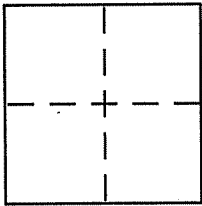
CORNER RECORD

Document Number APN 121-160-39

City of Nicasio

County of _____, California

Brief Legal Description Parcel 2 per 12 PM 14



CORNER TYPE

Government Corner Control
Meander Property
Rancho Other
Date of Survey 07-23-10

COORDINATES (Optional)

N. _____
E. _____
Zone _____ NAD27 NAD83
NAD83 Epoch _____
Elev. _____
Vert. Datum: NGVD29 NAVD88
Meas. Units: Metric Imperial

Corner - Left as found Found and tagged Established Reestablished Rebuilt

Identification and type of corner found: Evidence used to identify or procedure used to establish or reestablish the corner:

See page 2 of 2

A description of the physical condition of the monument as found and as set or reset:

See page 2 of 2

SURVEYOR'S STATEMENT

This Corner Record was prepared by me or under my direction in conformance with the Land Surveyor's Act on 8/4/2010

Signed [Signature] P.L.S. or R.C.E. No. 6784



COUNTY SURVEYOR'S STATEMENT

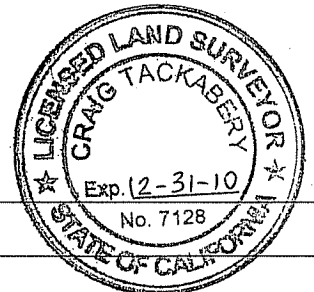
This Corner Record was received AUGUST 23, 2010

and examined and filed SEPTEMBER 14, 2010

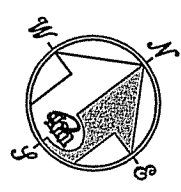
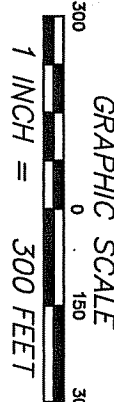
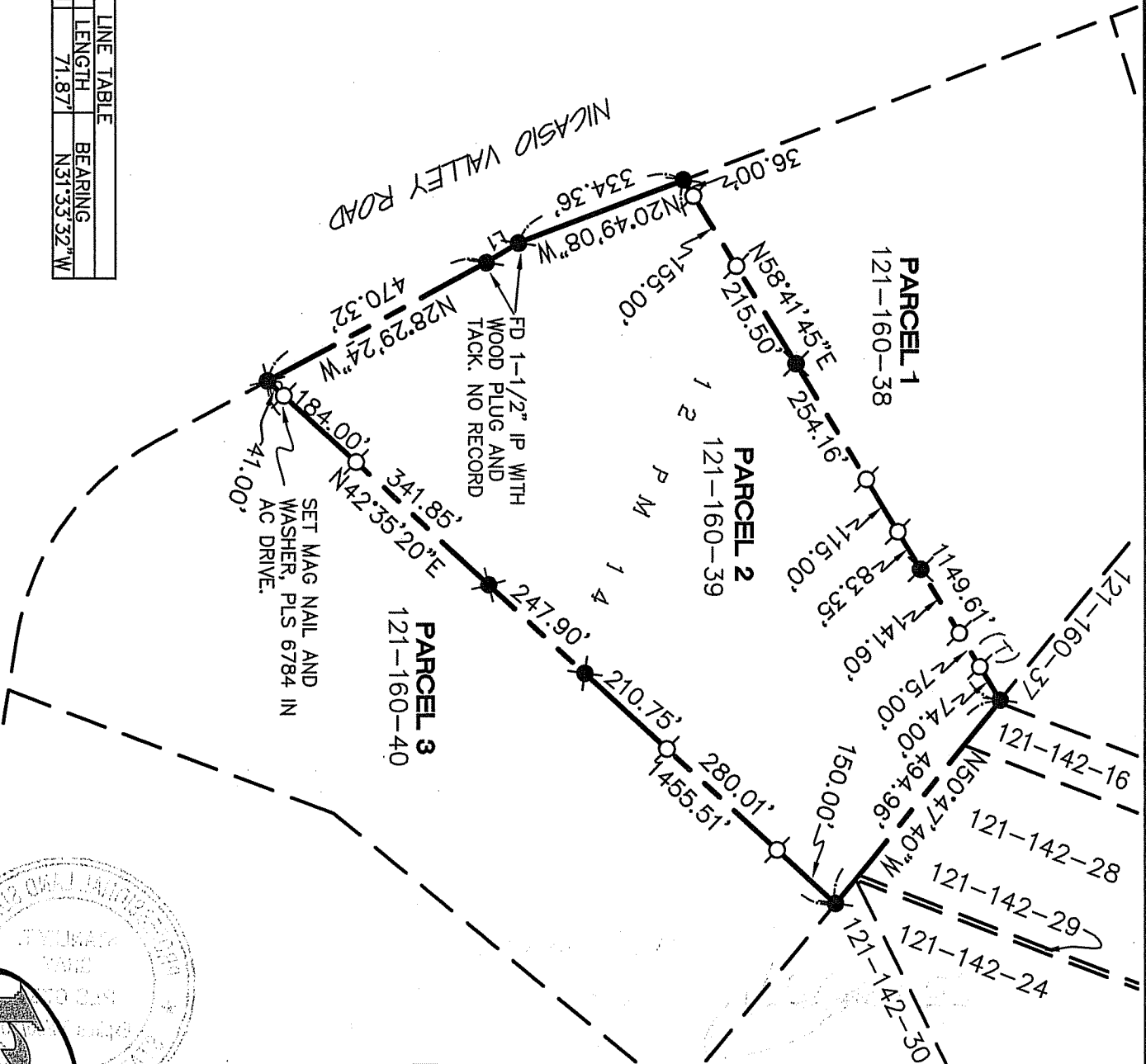
Signed [Signature] P.L.S. or R.C.E. No. 7128

Title COUNTY SURVEYOR

County Surveyor's Comment _____



LINE	LENGTH	BEARING
L1	71.87'	N31°33'32"W



REFERENCE

[A] PARCEL MAP OF LANDS OF ERIGERO, BOYD & PETERSON - 2080 O.R. 653 FILED FOR RECORD DECEMBER 12, 1975 BOOK 12 OF PARCEL MAPS AT PAGE 14, MARIN COUNTY RECORDS.

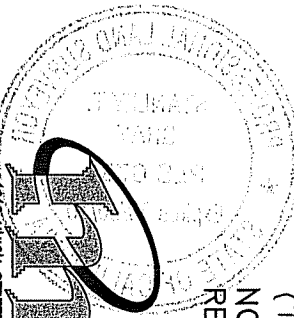
[B] RECORD OF SURVEY, LANDS OF U.S. BANK, FILED MAY 11, 2010 IN BOOK 2010 OF MAPS 55, MCR.

LEGEND

- FOUND 5/8" REBAR AND CAP, PLS 6784 PER [B]
- SET 5/8" REBAR WITH CAP, PLS 6784
- FOUND 1/2" IP AND TAG, RCE 11629, UNLESS NOTED OTHERWISE
- (T) TOTAL

NOTE
RECORD=MEASURED

CORNER RECORD



MERIDIAN SURVEYING ENGINEERING, INC.
 1812 UNION STREET SAN FRANCISCO, CA 94123 09105
 777 GRAND AVENUE, SUITE 202 SAN RAFAEL, CA 94901
 (415) 440-4131 info@meridiansurvey.com (415) 456-6460