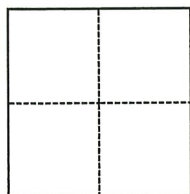


CORNER RECORD

Agency Index DPW# 19-042
 Document Number ADJ 121-130-27 A

City of NICASIO County of MARIN, California
 Brief Legal Description IRON PIPE SHOWN ON MAP 7 OS 14.



CORNER TYPE

- Government Corner Control
 Meander Property
 Rancho Other

Date of Survey MARCH 15, 2019

COORDINATES (Optional)

N. _____ E. _____
 Elevation _____
 Units Metric U.S. Survey Foot
 Horizontal Datum _____
 Zone _____ Epoch Date _____
 Vertical Datum _____
 Complies with Public Resources Code §§8801-8819
 Complies with Public Resources Code §§8890-8902

PLS Act Ref.: 8765(d) 8771 8773 Other:
 Corner/Monument: Left as found Established Rebuilt Pre-Construction
 Found and tagged Reestablished Referenced Post-Construction

Narrative of corner identified and monument as found, set, reset, replaced, or removed:
 See sheet #2 for description(s):

FOUND IRON PIPE SHOWN ON MAP 7 OS 14 NEAR LOT 8 AS SHOWN ON MAP 3 PM 55. SET FOUR REFERENCE TIES; RE-ESTABLISHED WITH COUNTY OF MARIN WELL MONUMENT PER UCS DWG #300. (SEE ATTACHED SKETCH) NO DETERMINATION WAS MADE AS TO THE VALIDITY OF THE MONUMENT SHOWN HEREON OR ITS RELATION TO PROPERTY LINES IN THE AREA.

SURVEYOR'S STATEMENT

This Corner Record was prepared by me or under my direction in conformance with the Professional Land Surveyors' Act on 06/20/22
 Signed [Signature] P.L.S. or R.C.E. No. 9292



COUNTY SURVEYOR'S STATEMENT

This Corner Record was received MAY 9, 2019
 and examined and filed 6/20/22
 Signed T.W. Park P.L.S. or R.C.E. No. 8176
 Title County Surveyor



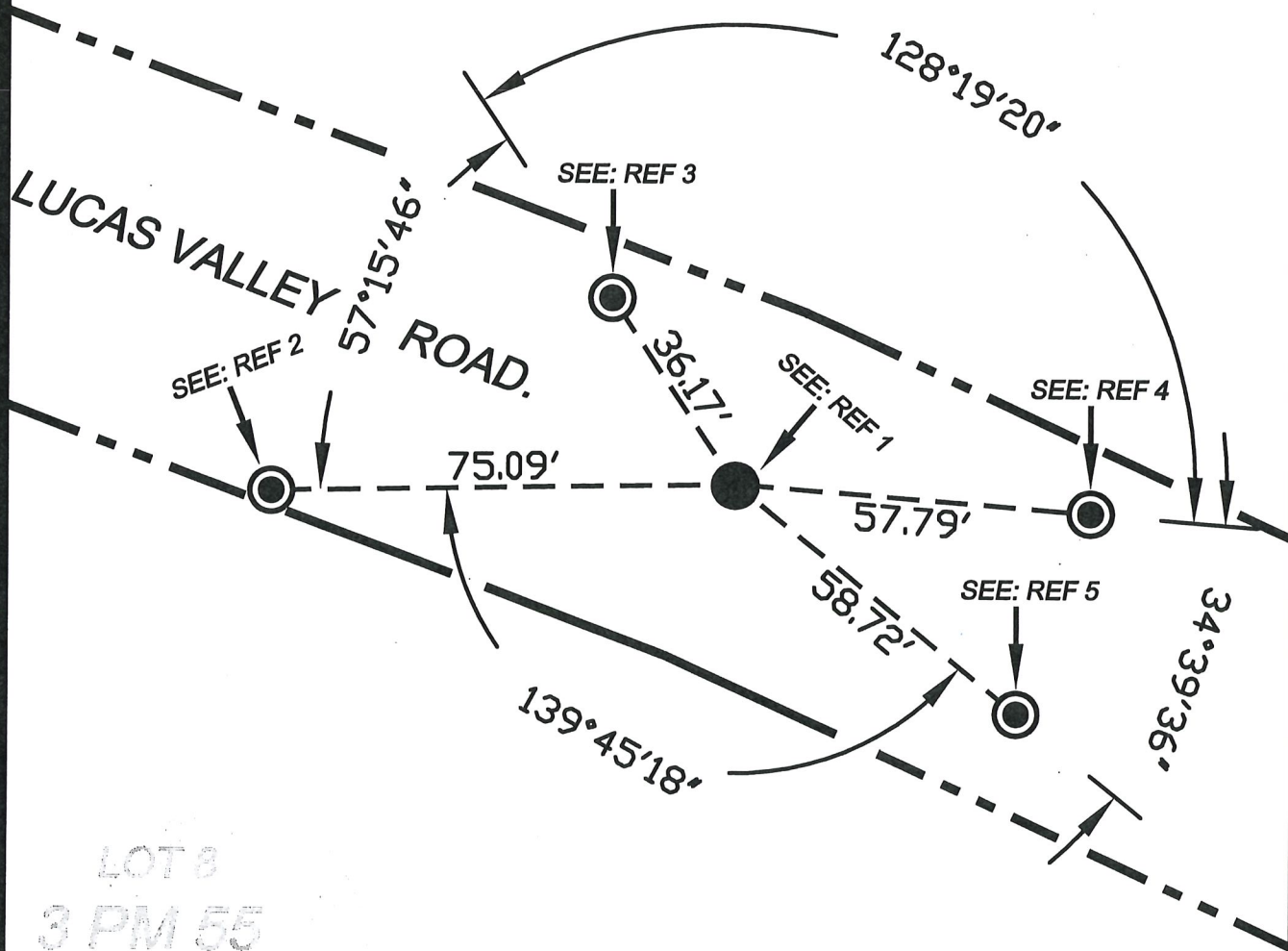
County Surveyor's Comment



A.P.N.
121-130-27
#5858 LUCAS VALLEY ROAD

LANDS OF SOARES
AS SHOWN ON 7 OS 14

7 OS 14



LOT 8
3 PM 55

A.P.N.
121-260-17
#5655 LUCAS VALLEY ROAD

LANDS OF GONZALES
AS SHOWN ON 7 OS 14

- REF 1: FOUND IRON PIPE AND TAG STAMPED R.E. NO.8424 PER 7 OS 14 REPLACED WITH STANDARD COUNTY MONUMENT PER UNIFORM CONSTRUCTION STANDARDS DRAWING #300.
- REF 2: SET NAIL AND WASHER STAMPED "MARIN COUNTY SURVEYOR" IN ASPHALT DRIVEWAY.
- REF 3: SET NAIL AND WASHER STAMPED "MARIN COUNTY SURVEYOR" ON SIDE OF TREE.
- REF 4: SET NAIL AND WASHER STAMPED "MARIN COUNTY SURVEYOR" ON SIDE OF UTILITY POLE.
- REF 5: SET NAIL AND WASHER STAMPED "MARIN COUNTY SURVEYOR" ON SIDE OF UTILITY POLE.

COUNTY OF MARIN
DEPARTMENT OF PUBLIC WORKS
SURVEY SECTION

SCALE: 1"=30'

JOB No. 2018-028
CORNER RECORD