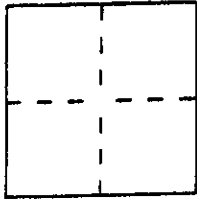


CORNER RECORD

Document Number A. P. # 121-070-54

City of UNINCORPORATED NICASIO County of MARIN, California

Brief Legal Description PORTION PCL. 'G-13', 17 PM 78, LANDS OF PASTERNAK



CORNER TYPE

COORDINATES (Optional)

- Government Corner
- Meander
- Rancho
- Date of Survey _____
- Control
- Property
- Other

N: _____
 E: _____
 Zone _____ Datum _____
 Elev. _____

Corner — Left as found Found and tagged Established Reestablished Rebuilt

Identification and type of corner found: Evidence used to identify or procedure used to establish or reestablish the corner:
FOUND USCGGS BRASS DISC MONUMENTS & 3/4" IRON PIPES WITH TAGS AS NOTED.
USED MAP RECORD BEARINGS & DISTANCES TO CALCULATED LOCATIONS
BASED ON 31 R.S. 81.

A description of the physical condition of the monument as found and as set or reset:
ALL MONUMENTS FOUND APPEARED UNDISTURBED. CORNERS SET WERE
REMOVED IN VINEYARD CONSTRUCTION.

SURVEYOR'S STATEMENT

This Corner Record was prepared by me or under my direction in conformance with the Land Surveyors' Act on OCTOBER 16 1998.

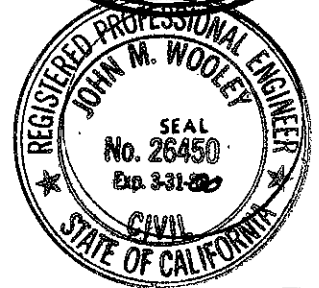
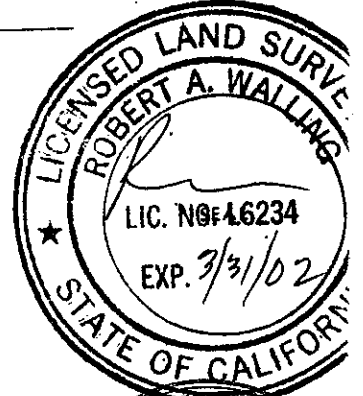
Signed [Signature] L.S. or R.C.E. Number PLS6234

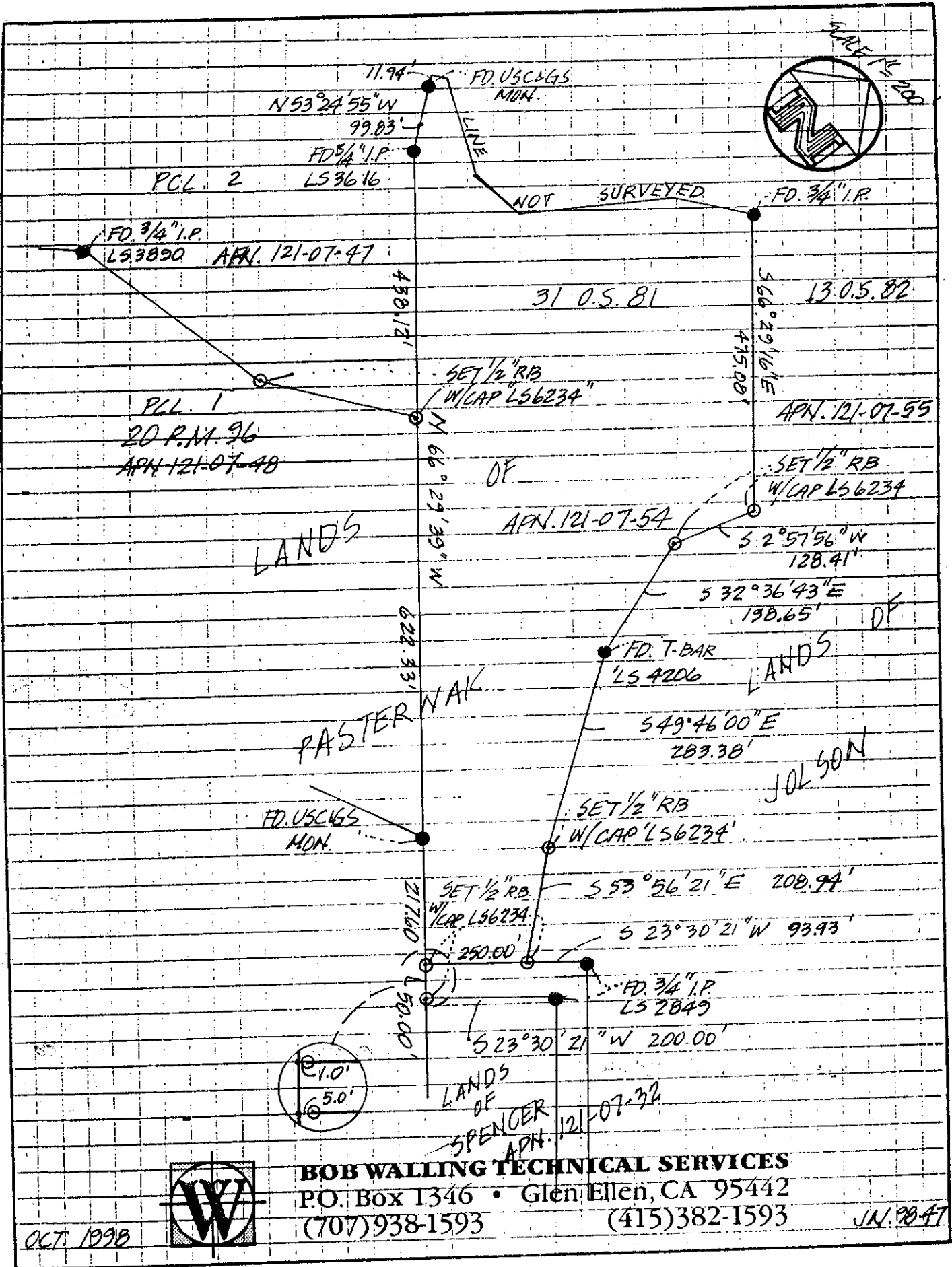
COUNTY SURVEYOR'S STATEMENT

This Corner Record was received NOVEMBER 13 1998 and examined and filed NOVEMBER 16 1998.

Signed [Signature] Title DEPUTY

County Surveyor's Comment _____





BOB WALLING TECHNICAL SERVICES
 P.O. Box 1346 • Glen Ellen, CA 95442
 (707) 938-1593 (415) 382-1593

OCT. 1998

JN. 98.47