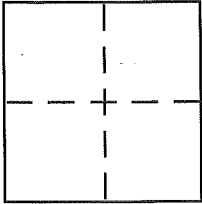


CORNER RECORD

Document Number 119-224-05

City of _____ County of MARIN, California

Brief Legal Description LANDS OF McDONOGH TRUST AS SHOWN ON THAT RECORD OF SURVEY 2004-115



CORNER TYPE

Government Corner Control
Meander Property
Rancho Other
Date of Survey _____

COORDINATES (Optional)

N. _____
E. _____
Zone _____ NAD27 NAD83
NAD83 Epoch _____
Elev. _____
Vert. Datum: NGVD29 NAVD88
Meas. Units: Metric Imperial

Corner - Left as found Found and tagged Established Reestablished Rebuilt

Identification and type of corner found: Evidence used to identify or procedure used to establish or reestablish the corner:
FOUND 3/4" IRON PIPE TAGGED LS 2535 AT THE WESTERLY CORNER.

FOUND 5/8" REBAR TAGGED LS 6649 AT THE SOUTHERLY CORNER.

FOUND CHISELED CROSS AT THE EASTERLY CORNER.

REESTABLISHED THE NORTHERLY CORNER OF SAID LANDS HOLDING RECORD ANGLES AND DISTANCES AS SHOWN ON SAID RECORD OF SURVEY 2004-115

A description of the physical condition of the monument as found and as set or reset:
ALL FOUND MONUMENTS IN GOOD CONDITION. SET NORTHERLY CORNER AND 1' REFERENCE.

SURVEYOR'S STATEMENT

This Corner Record was prepared by me or under my direction in conformance with the Land Surveyor's Act on 3-14-17

Signed FRED M. PHELPS P.L.S or R.C.E. No. LS 4483



COUNTY SURVEYOR'S STATEMENT

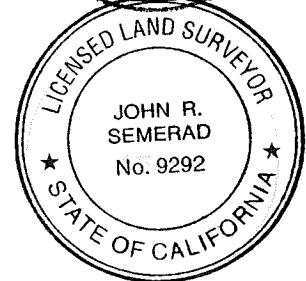
This Corner Record was received MARCH 21, 2017

and examined and filed APRIL 27, 2017

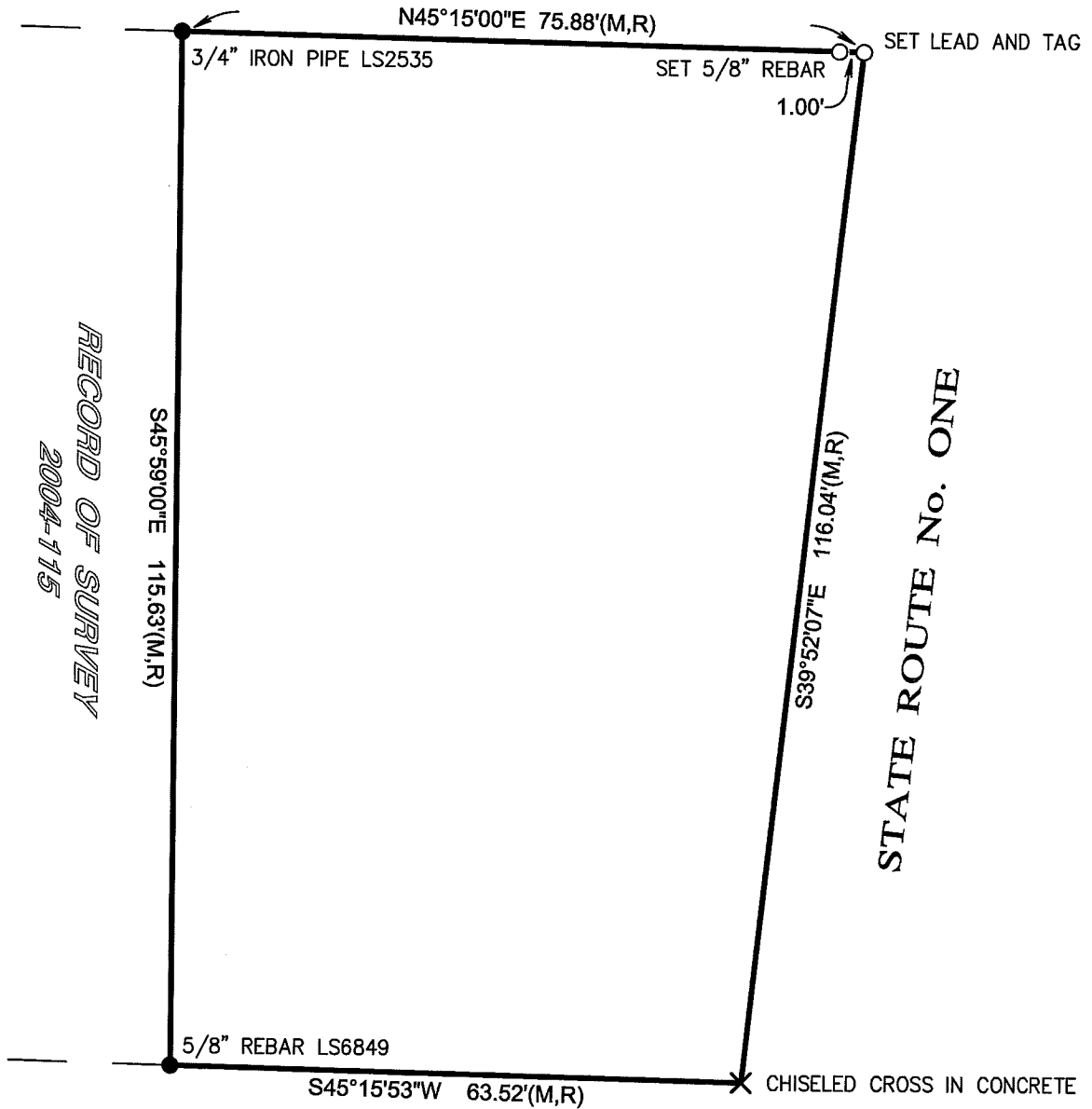
Signed [Signature] P.L.S or R.C.E. No. 9292

Title DEPUTY COUNTY SURVEYOR

County Surveyor's Comment APN 119-224-05



FOURTH STREET



Legend

- = Monument set (tagged LS 4483)
- = Monument found (size/tagged as noted)
- R = Record of Survey / 2004-115
- M = Measured

