



JERRICO ASSOCIATES
 SUITE 27
 77 MARK DRIVE
 SAN RAFAEL, CA 94903

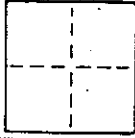
A. P. # 119-161-18

7010

CORNER RECORD

1/1

COUNTY OF Marin T. _____ R. _____ MERIDIAN _____ CALIFORNIA
 CORNER TYPE: GOVT. CORNER MEANDER RANCHO CONTROL OTHER
 CORNER IDENTIFICATION — DATE OF VISIT _____ 19____



CORNER — LEFT AS FOUND FOUND AND TAGGED REESTABLISHED OBLITERATED CORNER REBUILT

PHYSICAL DESCRIPTION OF CORNER FOUND; EVIDENCE AND METHOD USED TO IDENTIFY OR REESTABLISH

Found standard monuments at cul-de-sac (westerly end) Los Reyes Drive
 Los Reyes Subdivision 19 RM 24

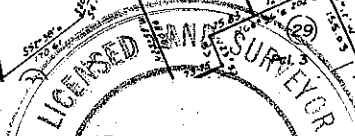
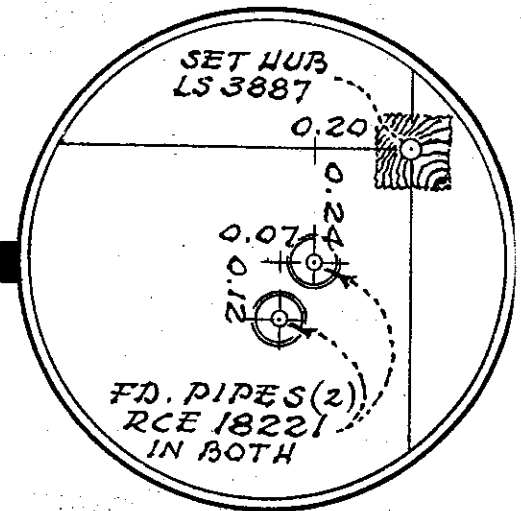
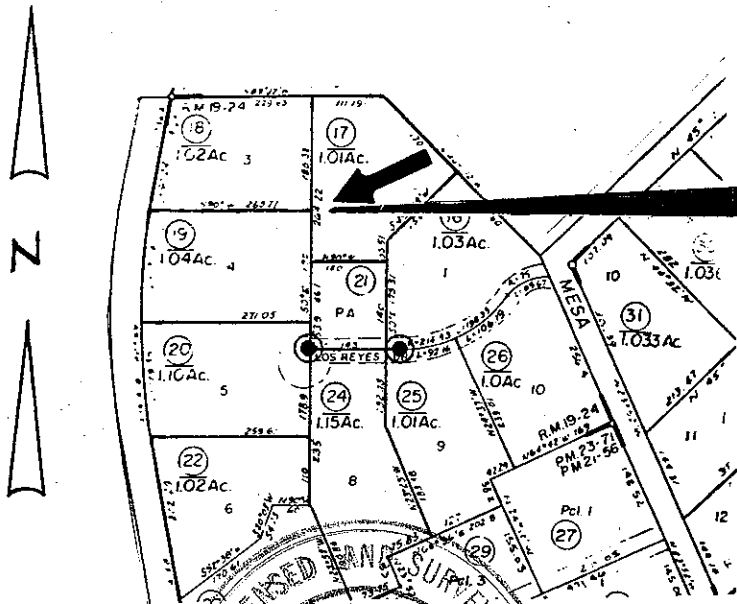
PHYSICAL DESCRIPTION OF MONUMENTS REBUILT OR PERPETUATED

Set hub and tag LS 3887 and found associated pipes (2) representing
 said point (?) by the same individual (?)

POINT REYES

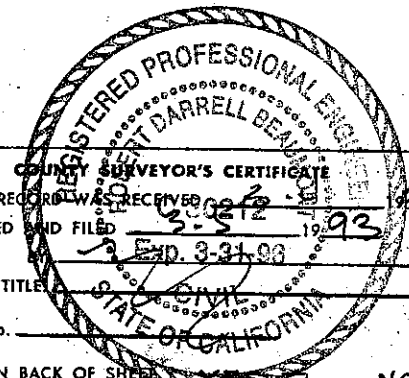
CALIFORNIA COORDINATE SYSTEM ORDER: FIRST SECOND THIRD
 STATIONS USED: NGS (USC & GS) STATE COUNTY OTHER STATION _____ STATION _____
 ZONE _____ ELEVATION _____ NORTHINGS (Y) _____ EASTINGS (X) _____

SKETCH: (Include reference tie or witness points, remarks and topo of area)



THIS CORNER RECORD WAS PREPARED BY ME OR UNDER MY
 DIRECTION IN CONFORMANCE WITH THE LAND SURVEYORS ACT
 ON March 1 No. 3887 1993

SIGNED: _____
 L.S. or R.C.E. No. 3887
 Cx C/3/96



THE CORNER RECORD WAS RECEIVED
 AND EXAMINED AND FILED 3-5 1993
 Exp. 3-31-93

TITLE _____
 DOCUMENT No. _____

STATEMENT ON BACK OF SHEET YES NO