

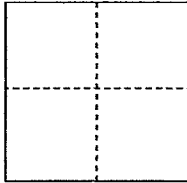
CORNER RECORD

Documented Number 119-111-12

City of Pt. Reyes Station

County of Marin, California

Brief Legal Description Parcel 85-B 5 PM 45



CORNER TYPE

Government Corner Control
Meander Property
Rancho Other

COORDINATES(Optional)

N. _____
E. _____
Zone _____ NAD27 NAD83
NAD83 Epoch _____
Elevation _____
Vert. Datum: NGVD 29 NADV88
Meas. Units: Metric Imperial

Date of Survey 12/19/2012

Corner- Left as found Found and tagged Established Reestablished Rebuilt

Identification and type of corner found: Evidence used to identify or procedure used to establish or reestablish the corner:

Reestablish the common lot line of Parcel 85-A & Parcel 85-B of 5 PM 45. Retracement of the line was based upon found monumentation of said map. See sketch on reverse side for details. The Basis of Bearings for this survey was established from 2 PM 47 which is the adjoiner immediately to the West of Parcel 85-A and the Basis of Bearings for 5 PM 45 as stated on the record map is the same Basis of Bearings as 2 PM 47. This corner record accepted the found position of a 4X4 fence post at the Northwesterly corner of Parcel B of 2 PM 47 and also being the Southwesterly corner of Parcel 85-A of 5 PM 45. See sketch on Reverse side for details.

A description of the physical condition of the monument as found and as set or reset: Set one half inch rebar with yellow plastic cap affixed to the top of the rebar and driven flush with surrounding grade. The cap is stamped "Scranton, PLS 5379". Points were set at random intervals along the common lot line between Lot 85-A and Lot 85-B of 5 PM 45.
See sketch on reverse side for specific locations of points set.

SURVEYOR'S STATEMENT

This Corner Record was prepared by me or under my direction in conformance with

the Land Surveyor's Act on December 27th, 2013

Signed Douglas J. Scranton P.L.S. or R.C.E. No.: PLS 5379

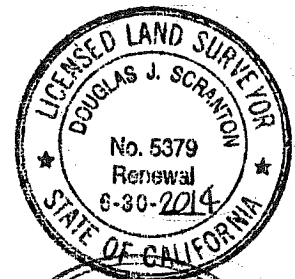
COUNTY SURVEYOR'S STATEMENT

This Corner Record was received JANUARY 2, 2013 and examined

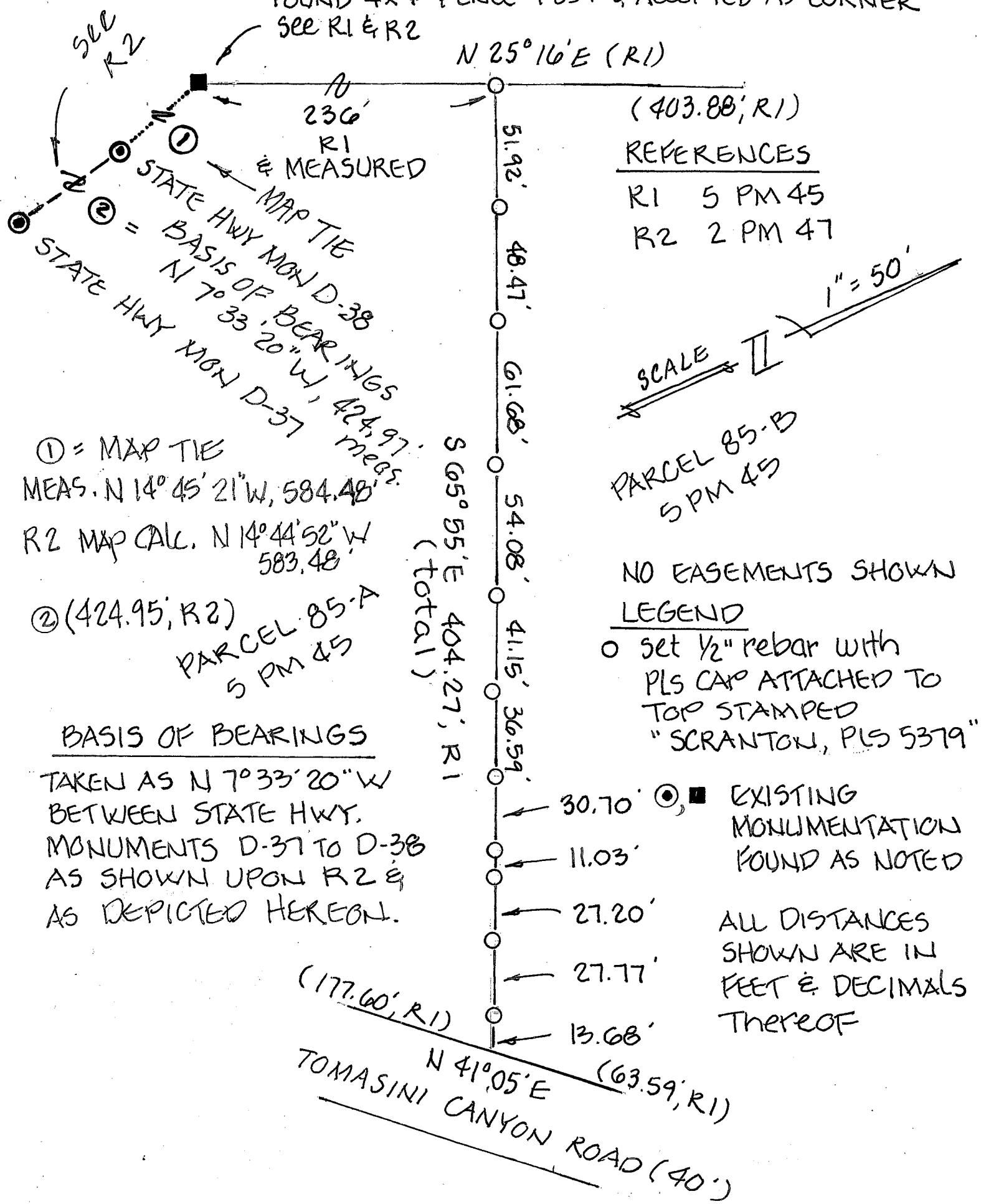
and filed JANUARY 31, 2013

Signed Richard G. Simonitch P.L.S. or R.C.E. No.: 7821

BY DEPUTY



FOUND 4x4 FENCE POST & ACCEPTED AS CORNER
SEE R1 & R2

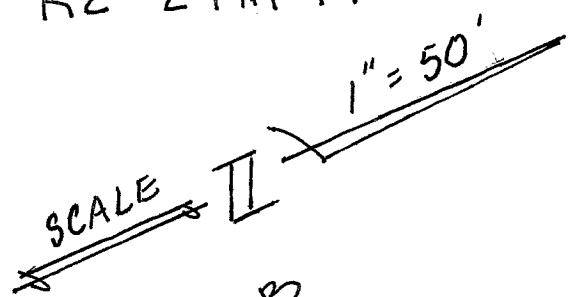


N 25° 16' E (R1)

(403.88; R1)

REFERENCES

- R1 5 PM 45
- R2 2 PM 47



PARCEL 85-B
5 PM 45

NO EASEMENTS SHOWN

LEGEND

- set 1/2" rebar with PLS CAP ATTACHED TO TOP STAMPED "SCRANTON, PLS 5379"

S 65° 55' E 404.27'; R1
(total)

- 51.92'
- 48.47'
- 61.68'
- 54.08'
- 41.15'
- 36.59'
- 30.70'
- 11.03'
- 27.20'
- 27.77'
- 13.68'

(177.60; R1)

N 41° 05' E

(63.59; R1)

TOMASINI CANYON ROAD (40')

① = MAP TIE
MEAS. N 14° 45' 21" W, 584.48'

R2 MAP CAL. N 14° 44' 52" W
583.48'

② (424.95; R2)
PARCEL 85-A
5 PM 45

BASIS OF BEARINGS

TAKEN AS N 7° 33' 20" W
BETWEEN STATE HWY.
MONUMENTS D-37 TO D-38
AS SHOWN UPON R2 &
AS DEPICTED HEREON.

ALL DISTANCES
SHOWN ARE IN
FEET & DECIMALS
THEREOF