

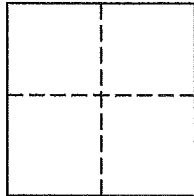
Lands of Miller
Job #: 161782

CORNER RECORD

Document Number 119-091-17

Point Reyes Station, County of Marin, California

Being a portion of Parcel 1, as shown upon that certain map entitled, "Parcel Map, Lands of Lesley Truett", filed for record December 7, 1978, in Book 15 of Parcel Maps, at Page 89, Marin County Records.



CORNER TYPE

Government Corner ☐ Control ☐
Meander ☐ Property ☒
Rancho ☐ Other ☐

Date of Survey November 16, 2016

COORDINATES (Optional)

N _____
E _____
Zone _____ NAD27 ☐ NAD83 ☐
NAD 83 Epoch _____
Elev. _____
Vert. Datum: NGVD29 ☐ NAVD88 ☐
Meas. Units: Metric ☐ Imperial ☒

Corner - Left as found ☐ Found and tagged ☐ Established ☐ Reestablished ☒ Rebuilt ☐

Identification and type of corner found: Evidence used to identify or procedure used to establish or reestablish the corner:
See Page 2 of 2 for information

A description of the physical condition of the monument as found and as set or reset:
See Page 2 of 2 for information

SURVEYOR'S STATEMENT

This Corner Record was prepared by me or under my direction in conformance with

The Land Surveyor's Act on December ²⁷~~22~~, 2016.

Signed [Signature] P.L.S. 6649

COUNTY SURVEYOR'S STATEMENT

This Corner Record was received

and examined and filed

Signed T.W. Park P.L.S. or R.C.L. No. 8176

Title _____

County Surveyors' Comment _____



All distances shown are in feet and decimals thereof

LEGEND

- Found Iron Pipe as Noted
- Set 3/4" Iron Pipe & Yellow Plastic Plug Stamped "LA STEVENS LS 6649"

()1 15 PM 89, Filed Dec. 7, 1978

()2 19 PM 30, Filed May 12, 1981

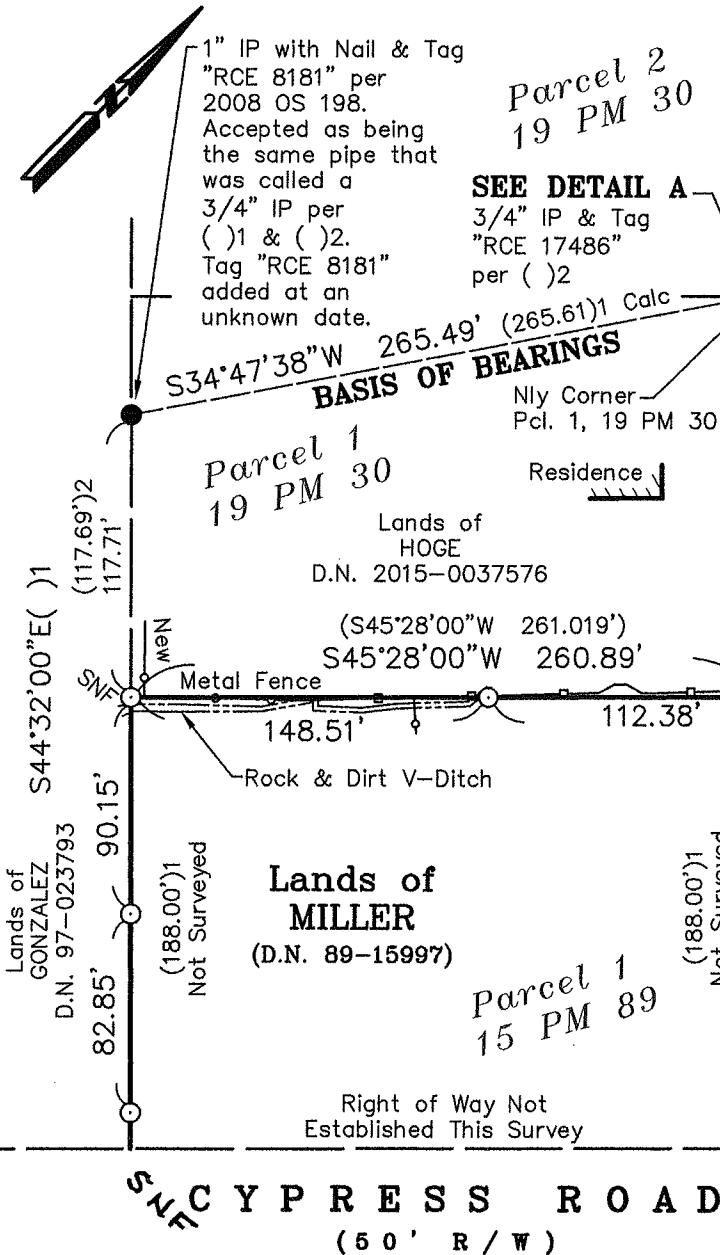
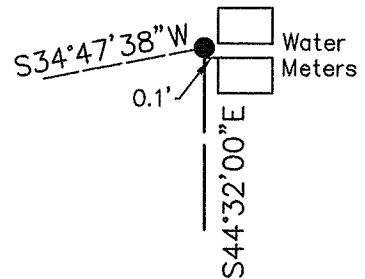
—○— Metal Fence

—□— Wood Post Wire Fence

Found Redwood Hub Remnants per ()1, 0.2' Below Ground Surface, No Tag, Top Surface of Hub Rotted Away, Perpetuated with IP.

DETAIL A

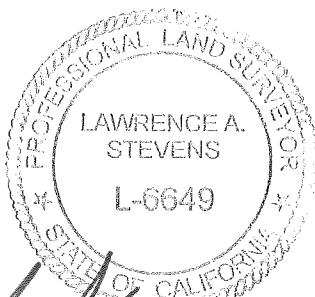
Not to Scale



GRAPHIC SCALE



(IN FEET)



Lawrence A. Stevens, PLS 6649

Copyright © Lawrence A. Stevens 2016

Corner Record Lands of Miller

(Ptn. of Parcel 1, 15 PM 89)

Point Reyes Station Marin County, California

Scale: 1" = 80'

December, 2016

L.A. Stevens & Associates, Inc.

Professional Land Surveyors * (415) 382-7713

7 Commercial Blvd., Suite 1 * Novato, CA 94949

Job # 16-1782

Page 2 Of 2