

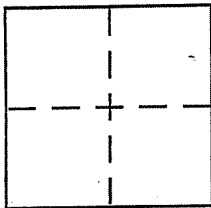
**CORNER RECORD**

Document Number 114-294-48

City of INVERNESS Park

County of MARIN, California

Brief Legal Description Control Monument on Sir Francis Drake near Balboa



**CORNER TYPE**

Government Corner  Control

Meander  Property

Rancho  Other

Date of Survey \_\_\_\_\_

**COORDINATES (Optional)**

N. \_\_\_\_\_

E. \_\_\_\_\_

Zone \_\_\_\_\_ NAD27  NAD83

NAD83 Epoch \_\_\_\_\_

Elev. \_\_\_\_\_

Vert. Datum: NGVD29  NAVD88

Meas. Units: Metric  Imperial

Corner - Left as found  Found and tagged  Established  Reestablished  Rebuilt

Identification and type of corner found: Evidence used to identify or procedure used to establish or reestablish the corner:

Boat spike, 'Z', set per 28053, and shown as point 'C' on Corner Record # 114-294-10, was referenced prior to road reconstruction, and rebuilt as a Standard County Monument  
SEE SKETCH ON BACK

A description of the physical condition of the monument as found and as set or reset:

Boat spike destroyed, replaced with a County Monument

**SURVEYOR'S STATEMENT**

This Corner Record was prepared by me or under my direction in conformance with the Land Surveyor's Act on Feb 6, 2009

Signed Michael A. Bryan P.L.S or R.C.E. No. LS 5767  
Chief of surveys - DPW - MARIN COUNTY



**COUNTY SURVEYOR'S STATEMENT**

This Corner Record was received FEBRUARY 9, 2009

and examined and filed MARCH 16, 2009

Signed [Signature] P.L.S or R.C.E. No. 7128

Title COUNTY SURVEYOR



County Surveyor's Comment \_\_\_\_\_

SC1

NORTH

NOTE:  
THE COUNTY ROAD SHOWN ON 3 MAP  
IS ACCEPTED AS A RESURVEY OF THE  
ROAD (60' WIDE) ORIGINALLY GRANTED  
BY A DEED RECORDED AUGUST 8, 1874  
BOOK O OF DEEDS AT PAGE 44.

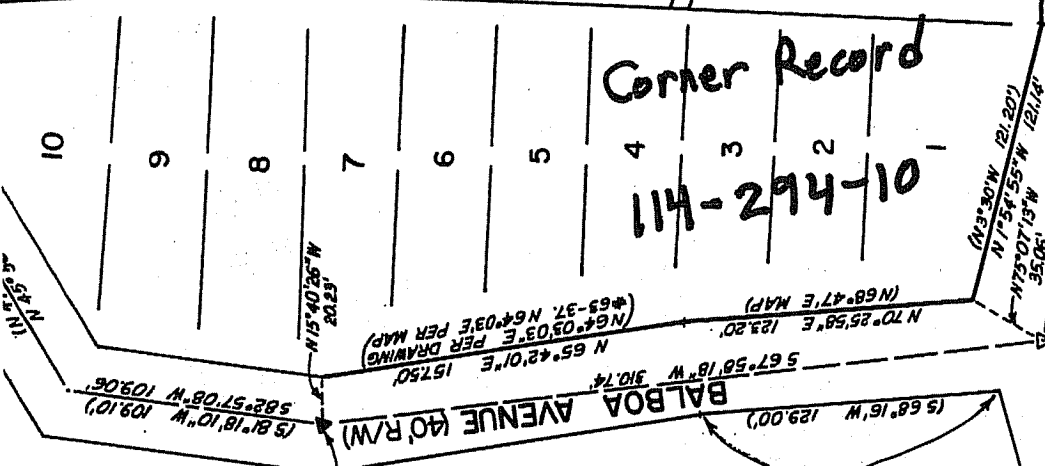
APN  
114-294-48

OF BALBOA AS SURVEYED BY COUNTY  
IN 1963 HAS BEEN ROTATED 1°36'50"  
RIGHT, AND SHRUNK BY A FACTOR OF  
0.99996 TO FIT FOUND RR SPIKES.  
SEE DRAWING G3-37 AND  
FIELD BOOK 287.

N72°16'57"E 111'

N33°11'58"E 32.68'  
FOUND RR SPIKE  
4" BELOW A.C. SURFACE

N18°20'18"W 51.27'  
FOUND RR SPIKE  
6" BELOW A.C. SURFACE



Corner Record  
114-294-10

N1°53'30" 111.53'  
N15°40'26"W 20.23'  
N64°05'03"E PER DRAWING  
(G3-37, N64°03'E 157.50')

N70°25'58"E 123.20'  
(N68°47'E MAP)  
N65°42'01"E 157.50'  
567°58'18"W 310.74'

SPIKE 9" DOWN  
PIKE AND  
ON SURFACE

15-22351

ENTR.  
185-22351  
OR BUT

(N23°30'W 121.20')  
N1°54'55"W 121.14'  
35.06'  
SET RR SPIKE

N4°51'05"W 171.78'  
N8°26'54"W 428.71'  
N9°30'55"W 149.92'

AMENDED MAP NO.1  
INVERNESS PARK  
13 MAPS 48

MAP COURSES ROTATED RIGHT 1°35'05"  
AND MULTIPLIED BY 0.99995 FROM  
SE CORNER LOT 170 SE CORNER LOT 42

(N18°52'W 142.9')  
N17°16'55"W 142.83'

N24°15'55" 28'

SIR FRANCIS

LEGEND

- FOUND OLD 2"x4" WITH NAIL, BELIEVED ORIGINAL, OR AS NOTED
- FOUND 3/4" I.P. WITH PLASTIC PLUG LS 3775, OR AS NOTED
- SET BOATSPIKE AND COUNTY TAG ON TRAVERSE POINT
- COUNTY MONUMENT

COUNTY SURVEYOR'S STATEMENT

This map has been examined in accordance with section 8766 of the Land Surveyors Act this 21<sup>st</sup> day of OCTOBER, 1920

RECORDER'S STATEMENT

Filed this 21<sup>st</sup> day of OCTOBER, 1920 at 10:04 a.m. in Book 28 of Surveys at page 3

BASIS OF BEARING

N 63°07'42" W between monuments shown on Sheet 2 of 15 O.S. 22. This is a bearing on

28 O.S. 3