

CORNER RECORD

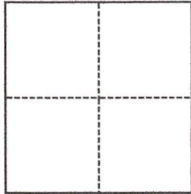
Agency Index DPW#21-032

Document Number APN 114-294-35

City of Inverness Park County of Marin, California

Brief Legal Description Being Lot 6 & 7 of 3 RM 48, as shown on Record of Survey 36 Surveys 76, MCR

CORNER TYPE



- Government Corner Control
 Meander Property
 Rancho Other

Date of Survey October 23, 2020

COORDINATES (Optional)

N. _____ E. _____

Elevation _____

Units Metric U.S. Survey Foot

Horizontal Datum _____

Zone _____ Epoch Date _____

Vertical Datum _____

Complies with Public Resources Code §§8801-8819

Complies with Public Resources Code §§8890-8902

PLS Act Ref.: 8765(d) 8771 8773 Other:

Corner/Monument: Left as found Established Rebuilt Pre-Construction

Found and tagged Reestablished Referenced Post-Construction

Narrative of corner identified and monument as found, set, reset, replaced, or removed:

See sheet #2 for description(s):

Found three centerline monuments as shown on 36 Surveys 76 and two monuments as shown on 2006 Maps 252. Set new monuments at corner of Lot 7/8; along northerly and southerly line of Lot 6 as shown.

SURVEYOR'S STATEMENT

This Corner Record was prepared by me or under my direction in conformance with

the Professional Land Surveyors' Act on January 27, 2021

Signed [Signature] P.L.S. or R.C.E. No. 7950



COUNTY SURVEYOR'S STATEMENT

This Corner Record was received 02/04/2021

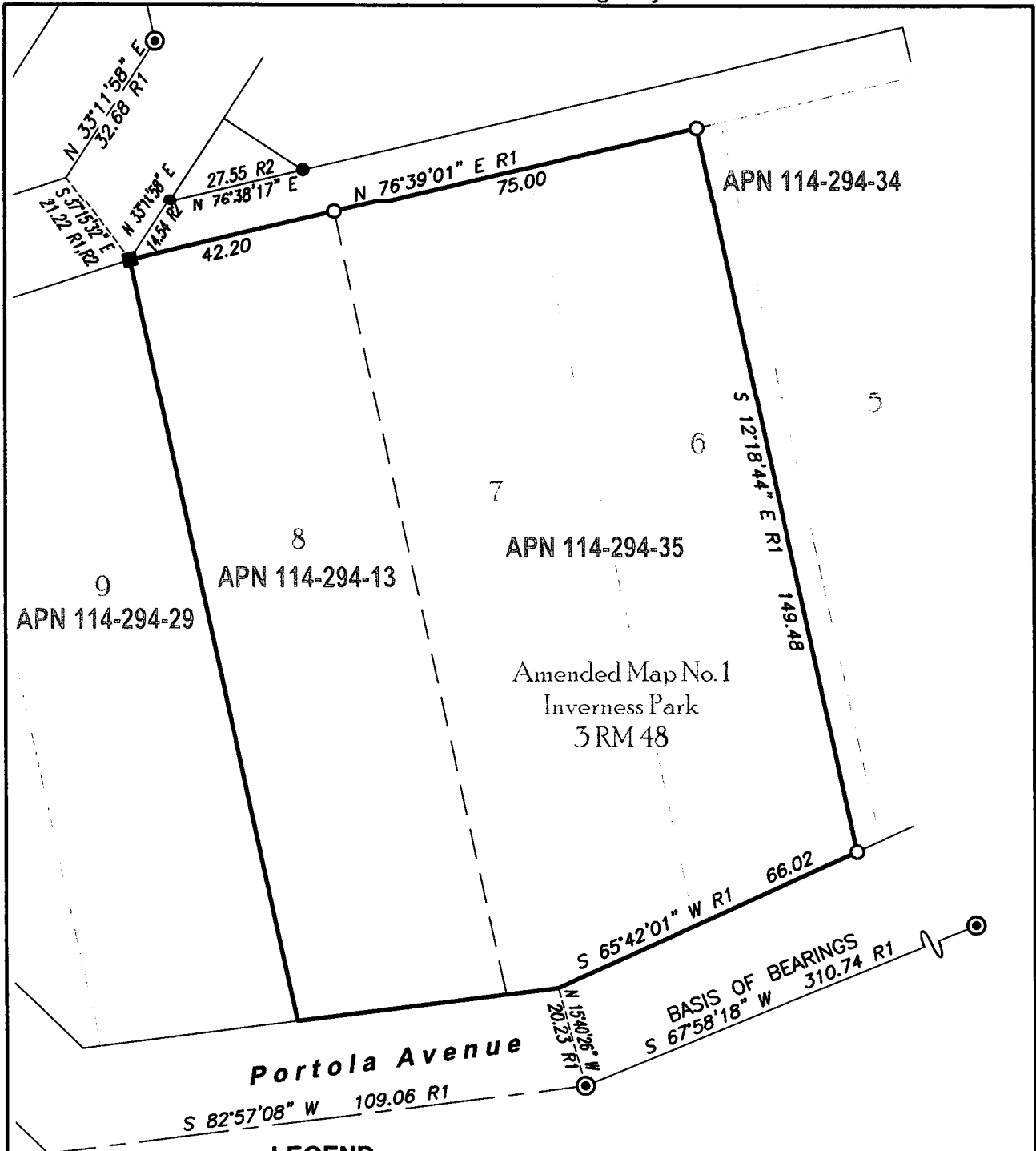
and examined and filed 06/10/2021

Signed T.W. Park P.L.S. or R.C.E. No. 8176

Title COUNTY SURVEYOR

County Surveyor's Comment





Portola Avenue

APN 114-294-35

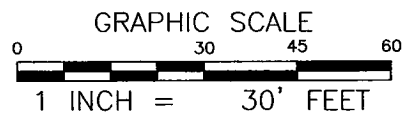
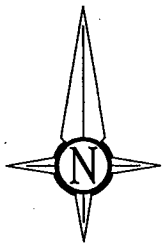
APN 114-294-13

APN 114-294-29

Amended Map No. 1
Inverness Park
3 RM 48

LEGEND

- FOUND 1/2-INCH REBAR WITH ALUMINUM CAP, LS 7237 PER R2
- ⊙ FOUND MONUMENT WELL WITH BRASS DISK, COUNTY OF MARIN
- FOUND 2X2 HUB WITH BRASS TAG STAMPED "MARIN"
- SET 5/8-INCH REBAR, YELLOW CAP, PLS 7950
- R1 36 SURVEYS 76, MARIN COUNTY RECORDS
- R2 2006 MAPS 252, MARIN COUNTY RECORDS



1031Survey, Inc.

HighDefinitionSurveying
1857 Rainier Circle, Petaluma, California, 94954
415-827-6370

J:\20265-Shinkai\Dwg\20265CR.dwg