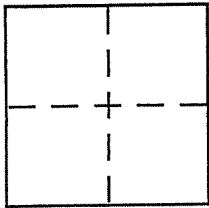


**CORNER RECORD**

Document Number 114-294-10

City of Near Inverness Park County of MARIN, California

Brief Legal Description Control Monuments @ Balboa Ave & Sir Francis Drake Blvd



**CORNER TYPE**

Government Corner  Control   
Meander  Property   
Rancho  Other   
Date of Survey 4-08

**COORDINATES (Optional)**

N. \_\_\_\_\_  
E. \_\_\_\_\_  
Zone \_\_\_\_\_ NAD27  NAD83   
NAD83 Epoch \_\_\_\_\_  
Elev. \_\_\_\_\_  
Vert. Datum: NGVD29  NAVD88   
Meas. Units: Metric  Imperial

Corner - Left as found  Found and tagged  Established  Reestablished  Rebuilt

Identification and type of corner found: Evidence used to identify or procedure used to establish or reestablish the corner:

Bolt on Balboa Avenue protected by setting a monument casing around the Bolt.

Spike @ intersection referenced out prior to being destroyed.

A description of the physical condition of the monument as found and as set or reset: \_\_\_\_\_

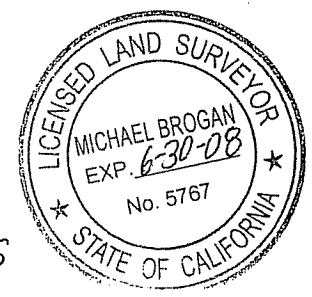
After destruction, Spike was replaced with a Standard County Monument

**SURVEYOR'S STATEMENT**

This Corner Record was prepared by me or under my direction in conformance with the Land Surveyor's Act on April 15 2008.

Signed Michael A. Brogan P.L.S or R.C.E. No. \_\_\_\_\_

MARIN COUNTY CHIEF OF SURVEYS



**COUNTY SURVEYOR'S STATEMENT**

This Corner Record was received APRIL 18, 2008

and examined and filed MAY 8, 2008

Signed \_\_\_\_\_ P.L.S or R.C.E. No. 7128

Title COUNTY SURVEYOR



County Surveyor's Comment \_\_\_\_\_  
\_\_\_\_\_  
\_\_\_\_\_

A = FOUND BOLT/COUNTY TAG  
PLACED MONUMENT CASING

B = REPLACED DESTROYED SPIKE  
WITH STANDARD COUNTY MONUMENT

C = FOUND BOATSPIKE

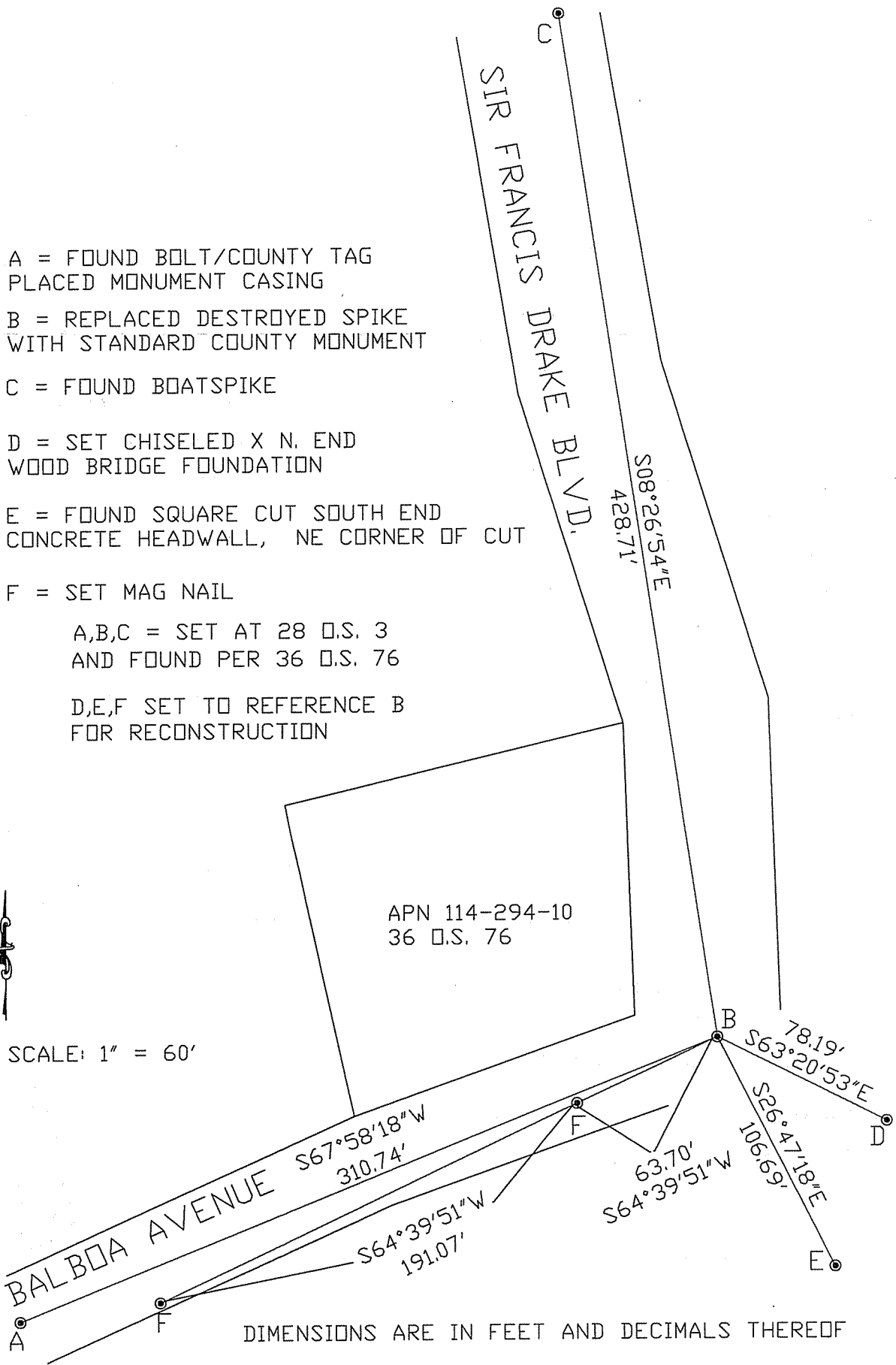
D = SET CHISELED X N. END  
WOOD BRIDGE FOUNDATION

E = FOUND SQUARE CUT SOUTH END  
CONCRETE HEADWALL, NE CORNER OF CUT

F = SET MAG NAIL

A,B,C = SET AT 28 D.S. 3  
AND FOUND PER 36 D.S. 76

D,E,F SET TO REFERENCE B  
FOR RECONSTRUCTION



SCALE: 1" = 60'

DIMENSIONS ARE IN FEET AND DECIMALS THEREOF