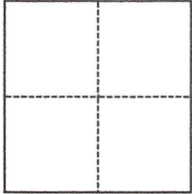


CORNER RECORD

Agency Index DPW#21-077Document Number APN 114-285-12City of Inverness Park County of Marin, CaliforniaBrief Legal Description Record of Survey filed in Book 9 of Surveys, at Page 35, Marin County Records**CORNER TYPE**

- Government Corner Control
 Meander Property
 Rancho Other

Date of Survey May 20, 2021**COORDINATES (Optional)**

N. _____ E. _____

Elevation _____

Units Metric U.S. Survey Foot

Horizontal Datum _____

Zone _____ Epoch Date _____

Vertical Datum _____

 Complies with Public Resources Code §§8801-8819 Complies with Public Resources Code §§8890-8902PLS Act Ref.: 8765(d) 8771 8773 Other:Corner/Monument: Left as found Established Rebuilt Pre-Construction Found and tagged Reestablished Referenced Post-Construction

Narrative of corner identified and monument as found, set, reset, replaced, or removed:

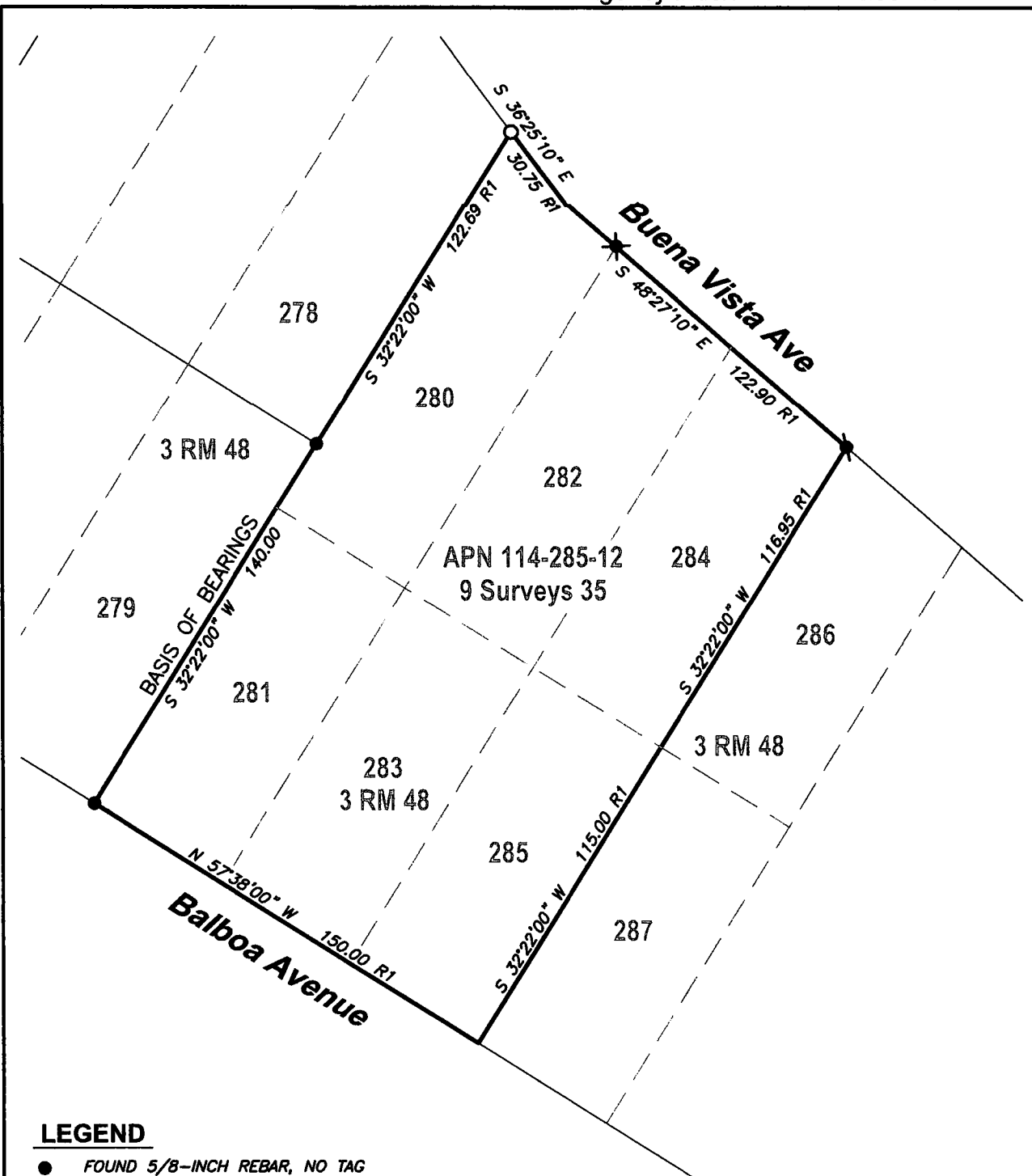
 See sheet #2 for description(s):

Found rebars without tags, in good condition, on northwesterly boundary that match record; and iron pipe at northeast corner in good condition. Found iron pipe at angle point in Buena Vista Ave, disturbed, not held. Set northwest corner with rebar & yellow cap per Sheet 2.

SURVEYOR'S STATEMENT

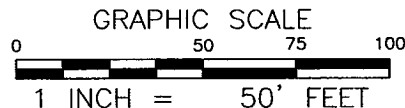
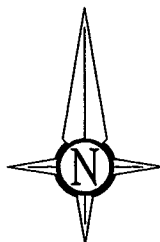
This Corner Record was prepared by me or under my direction in conformance with

the Professional Land Surveyors' Act on May 21, 2021Signed [Signature] P.L.S. or R.C.E. No. 7950**COUNTY SURVEYOR'S STATEMENT**This Corner Record was received MAY 21, 2021and examined and filed JUNE 16, 2021Signed T.W. Park P.L.S. or R.C.E. No. 8176Title COUNTY SURVEYOR**County Surveyor's Comment**



LEGEND

- FOUND 5/8-INCH REBAR, NO TAG
- ✕ FOUND 1-INCH IRON PIPE, NO TAG, DISTURBED
- ⦿ FOUND 1-1/2 INCH IRON PIPE, BRASS TAG, RCE 11181
- SET 5/8-INCH REBAR, YELLOW CAP, PLS 7950
- R1 RECORD OF SURVEY, 9 SURVEYS 35, MARIN COUNTY RECORDS



1031Survey, Inc.

HighDefinitionSurveying
1857 Rainier Circle, Petaluma, California, 94954
415-827-6370

J:\21313-Whitney-Balboa\Drawg\21313CR.dwg