

CORNER RECORD

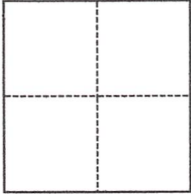
Agency Index DPW#21-033

Document Number APN 114-273-38

City of Inverness Park County of Marin, California

Brief Legal Description Lots 113, 114 of 3 RM 48, as shown on Record of Survey 21 OS 48, MCR

CORNER TYPE



- Government Corner Control
 Meander Property
 Rancho Other

Date of Survey February 9, 2021

COORDINATES (Optional)

N. _____ E. _____

Elevation _____

Units Metric U.S. Survey Foot

Horizontal Datum _____

Zone _____ Epoch Date _____

Vertical Datum _____

Complies with Public Resources Code §§8801-8819

Complies with Public Resources Code §§8890-8902

PLS Act Ref.: 8765(d) 8771 8773 Other:

Corner/Monument: Left as found Established Rebuilt Pre-Construction

Found and tagged Reestablished Referenced Post-Construction

Narrative of corner identified and monument as found, set, reset, replaced, or removed:

See sheet #2 for description(s):

Found four rebar with yellow cap, LS 3887 in good condition. Set brass nail & tag at southwest corner Lot 114, located in wood stairs.

SURVEYOR'S STATEMENT

This Corner Record was prepared by me or under my direction in conformance with the Professional Land Surveyors' Act on February 11, 2021

Signed *G.J. HARMINA* P.L.S. or R.C.E. No. 7950



COUNTY SURVEYOR'S STATEMENT

This Corner Record was received 03/02/2021

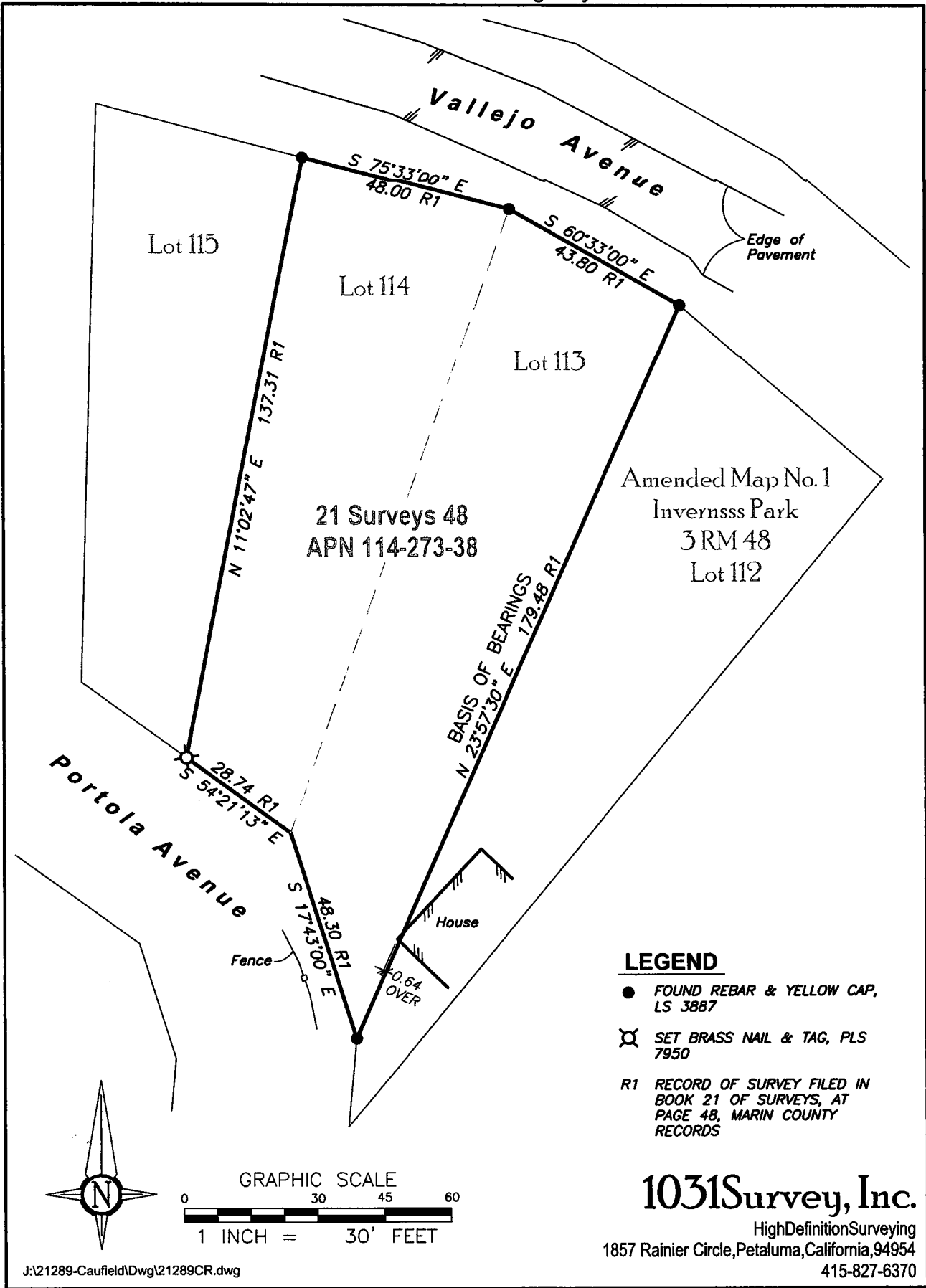
and examined and filed 06/10/2021

Signed *T.K.L. Park* P.L.S. or R.C.E. No. 8176

Title COUNTY SURVEYOR

County Surveyor's Comment





J:\21289-Caufield\Draw\21289CR.dwg

1031Survey, Inc.

HighDefinitionSurveying
1857 Rainier Circle, Petaluma, California, 94954
415-827-6370