

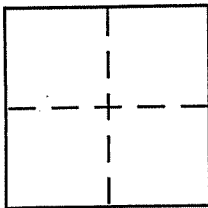
CORNER RECORD

Document Number 114-273-15

City of INVERNESS PARK

County of MARIN, California

Brief Legal Description Control Monuments on Sir Francis Drake @ Inverness Park



CORNER TYPE

- Government Corner Control
- Meander Property
- Rancho Other
- Date of Survey _____

COORDINATES (Optional)

- N. _____
- E. _____
- Zone _____ NAD27 NAD83
- NAD83 Epoch _____
- Elev. _____
- Vert. Datum: NGVD29 NAVD88
- Meas. Units: Metric Imperial

Corner - Left as found Found and tagged Established Reestablished Rebuilt

Identification and type of corner found: Evidence used to identify or procedure used to establish or reestablish the corner:
Boatspikes 135' & 145', set per 28 O.S. 3, were referenced out and rebuilt as Standard County Monuments

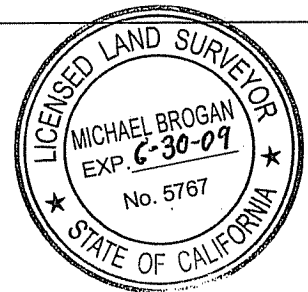
A description of the physical condition of the monument as found and as set or reset:
Road Reconstruction destroyed boatspikes

See Sketch on Back

SURVEYOR'S STATEMENT

This Corner Record was prepared by me or under my direction in conformance with the Land Surveyor's Act on Feb. 6, 2009

Signed Michael A. Brogan P.L.S or R.C.E. No. LS 5767
Chief of Surveys - DPW - MARIN COUNTY



COUNTY SURVEYOR'S STATEMENT

This Corner Record was received FEBRUARY 9, 2009

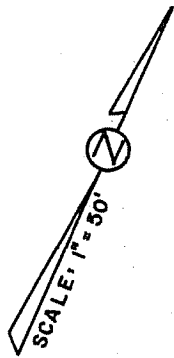
and examined and filed MARCH 16, 2009

Signed [Signature] P.L.S or R.C.E. No. 7128

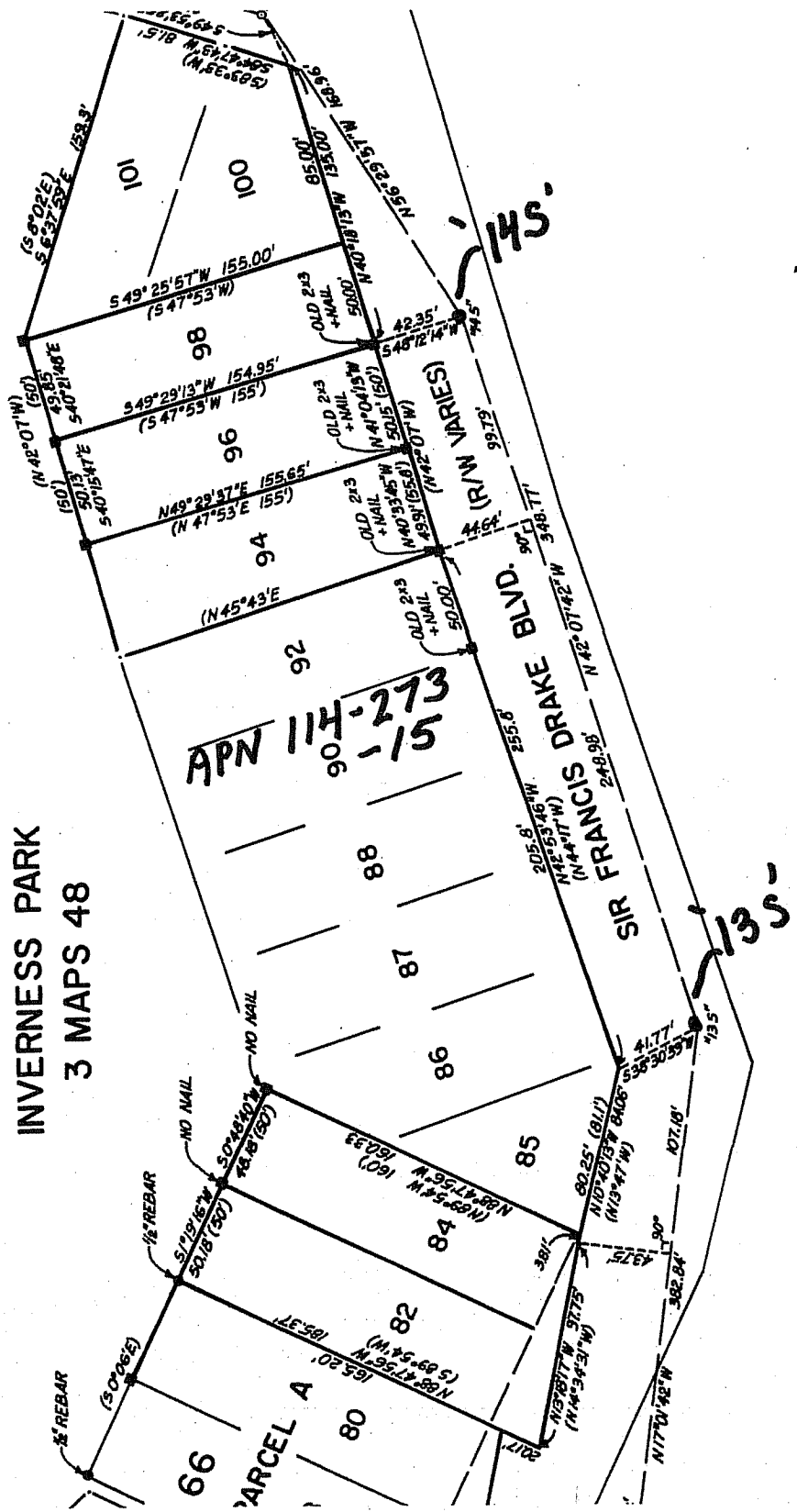
Title COUNTY SURVEYOR



County Surveyor's Comment _____



AMENDED MAP NO. 1
INVERNESS PARK
3 MAPS 48



28 O.S. 3