

CORNER RECORD



JERRICO ASSOCIATES

SUITE 27  
77 MARK DRIVE  
SAN RAFAEL, CA 94903

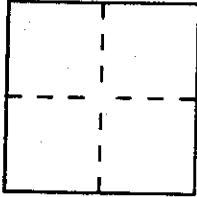
7207

City of Inverness

Document Number 114-150-14

County of Marin, California

Brief Legal Description Lands of Brunt 89-26897



CORNER TYPE

Government Corner  Control   
Meander  Property   
Rancho  Other   
Date of Survey July 24 1996

COORDINATES  
(Optional)

N. \_\_\_\_\_  
E. \_\_\_\_\_  
Zone \_\_\_\_\_ Datum \_\_\_\_\_  
Elev. \_\_\_\_\_

Corner — Left as found  Found and tagged  Established  Reestablished  Rebuilt

Identification and type of corner found: Evidence used to identify or procedure used to establish or reestablish the corner:  
(A) (B) Found pipe and LS 4794 at NE Corner and pipe and tag LS 4794 at SE Corner per 35 O.S 25

A description of the physical condition of the monument as found and as set or reset:  
(A) (B) Pipes found are new with bright yellow caps and seem to be in excellent physical condition (for metal).

SURVEYOR'S STATEMENT

This Corner Record was prepared by me or under my direction in conformance with the Land Surveyors' Act on July 24 19 96.

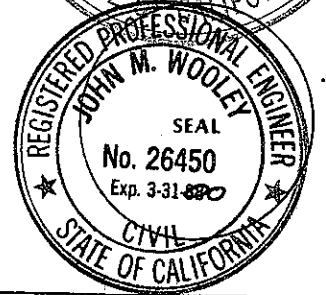
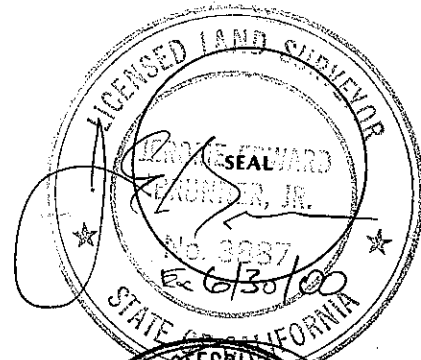
Signed [Signature] L.S. or R.C.E. Number LS 3887

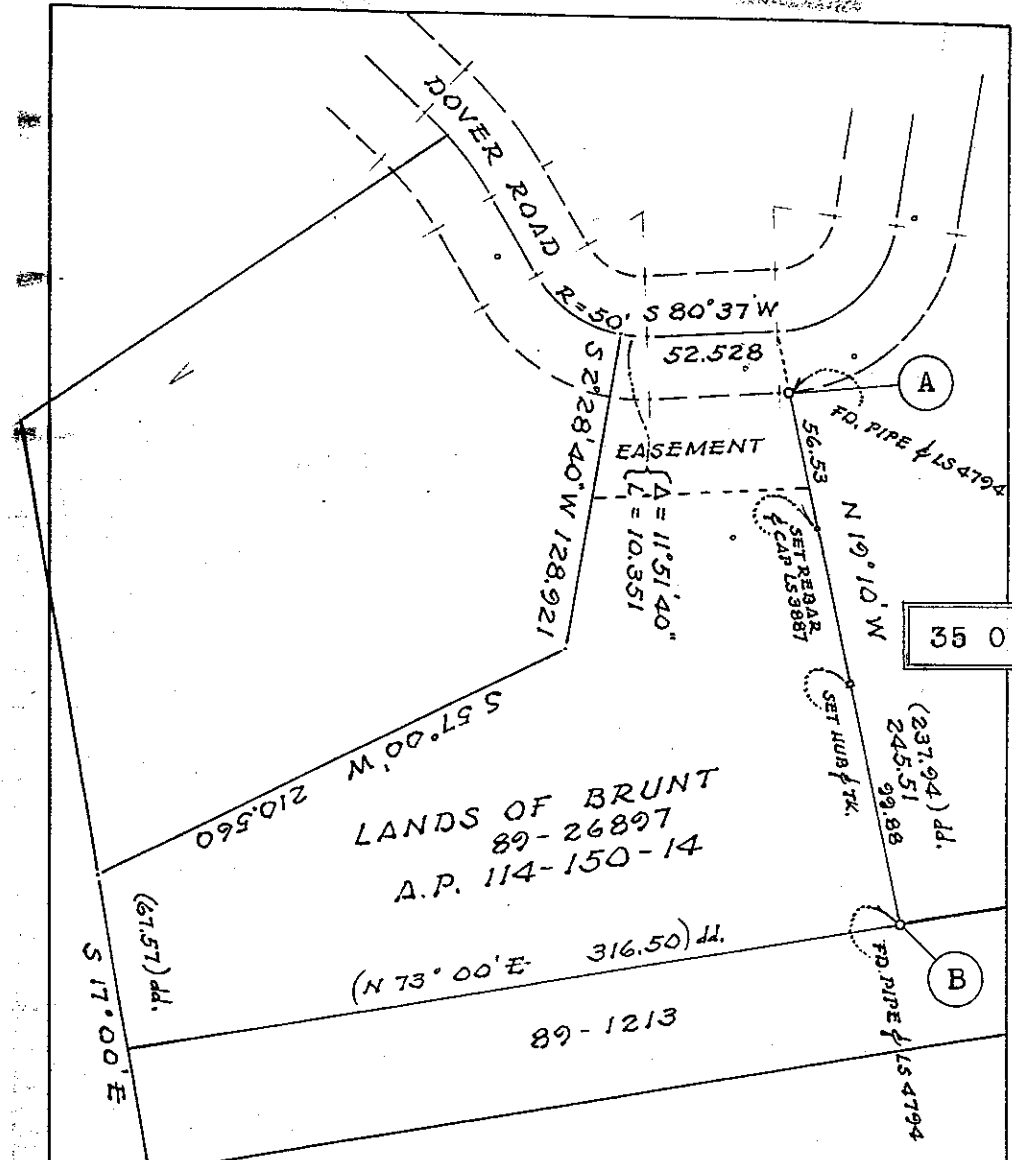
COUNTY SURVEYOR'S STATEMENT

This Corner Record was received MARCH 19 19 97 and examined and filed MARCH 20 19 97.

Signed [Signature] Title Deputy Director

County Surveyor's Comment \_\_\_\_\_





RETRACEMENT OF THE EASTERLY LINE  
 OF A.P. 114-150-14  
 LANDS OF BRUNT 89-26897  
 INVERNESS CALIFORNIA  
 JULY 1996  
 JERRICO ASSOCIATES 77 MARK DRIVE SAN RAFAEL CA.  
 S-7207

