

L. A. Stevens & Associates, Inc.
Professional Land Surveyors
Novato, California

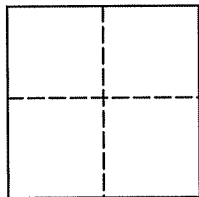
Lands of Bennett
Job #: 09-1245

CORNER RECORD

Document Number 114-111-21

Town of Inverness, County of Marin, California

Brief Legal Description: Being that certain tract shown on that certain map entitled "Record of Survey, Lands of Welpott-Gray, 87-72828, Within Paradise Ranch Estates, Inverness, Marin County, California", filed for record March 8, 1988 in Book 24 of Surveys at Page 24, Marin County Records.



CORNER TYPE

COORDINATES (Optional)

Government Corner Control
Meander Property
Rancho Other

N _____
E _____
Zone _____ NAD27 NAD83
NAD 83 Epoch _____
Elev. _____
Vert. Datum: NGVD29 NAVD88
Meas. Units: Metric Imperial

Date of Survey December 9, 2009

Corner - Left as found Found and tagged Established Reestablished Rebuilt

Identification and type of corner found: Evidence used to identify or procedure used to establish or reestablish the corner:
See Page 2 of 2

A description of the physical condition of the monument as found and as set or reset:
See Page 2 of 2

SURVEYOR'S STATEMENT

This Corner Record was prepared by me or under my direction in conformance with
The Land Surveyor's Act on December 22, 2009

Signed [Signature] P.L.S. 6649



COUNTY SURVEYOR'S STATEMENT

This Corner Record was received DECEMBER 28, 2009
and examined and filed JANUARY 27, 2010

Signed [Signature] P.L.S. or R.C.E. No. 7128

Title COUNTY SURVEYOR

County Surveyors' Comment _____



DIMENSIONS ARE IN FEET AND DECIMALS.

COUNTY SURVEYOR'S STATEMENT
 THIS MAP HAS BEEN EXAMINED IN ACCORDANCE WITH
 SECTION 8766 OF THE LAND SURVEYORS ACT THIS
 13 DAY OF MARCH 1987.

U. HARNAD - REGISTERED
 COUNTY SURVEYOR
 Edward B. Beaumont
 DEPUTY
 84-3106



SURVEYOR'S STATEMENT
 THIS MAP CORRECTLY REPRESENTS A SURVEY MADE BY ME
 OR UNDER MY CLOSE PERSONAL SUPERVISION WITH THE MEASUREMENTS
 OF THE LAND SURVEYED AND THE INSTRUMENTS USED.
 I, JACK WELPOTT, SURVEYOR, 19 87.

SIGNED: Jack Welpott
 L.A. 0087
 L.C. MAP. C/Ds/BB
 No. 3887
 STATE OF CALIFORNIA



PARADISE RANCH

ORNDUFF 82-19322
 84-58388

BASIS OF MERIDIAN
 S 94° 52' 21" E 245.716
 S 49° 29' 30" E 136.96
 S 49° 29' 30" E 103.071
 S 49° 29' 30" E 103.071
 S 49° 29' 30" E 103.071
 S 49° 29' 30" E 103.071

ESTATES

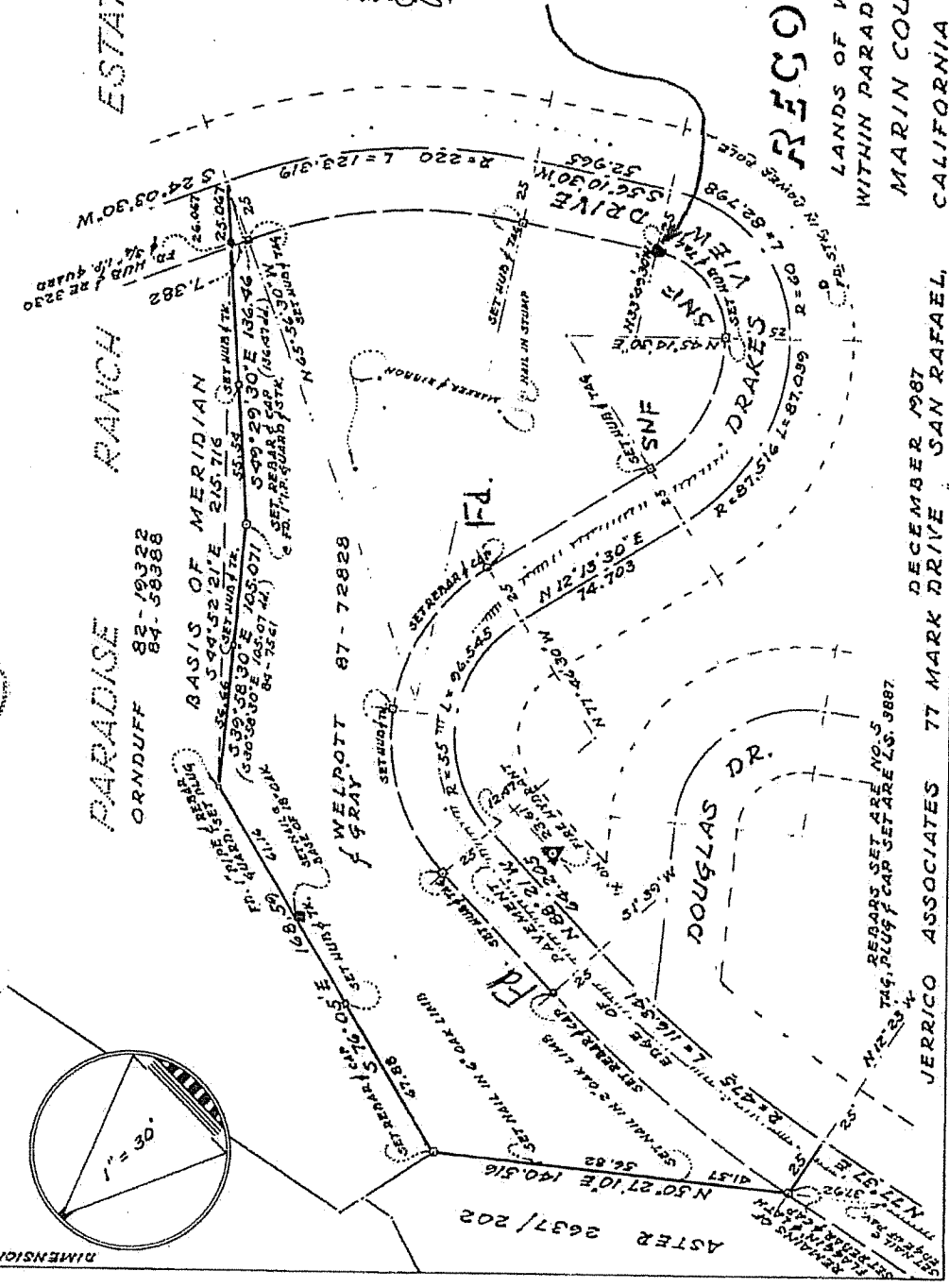
LEGEND
 Fd Found
 SNF SEARCHED FOR, NOT FOUND

RECORDER'S STATEMENT
 FILED THIS 21 DAY OF MARCH 1988 AT 10:41 AM.
 IN BOOK 24 OF SURVEYS AT PAGE 14.
 SERIAL NO. 1587 AT THE REQUEST
 OF Jack Welpott
 COUNTY RECORDER
 DEPUTY RECORDER
 SERIAL # 88-1235F
 FEE # 6.00

FOUND 2x2 HUB REMNANTS,
 SET 3/4" IRON PIPE & PLASTIC
 PLUG, STAMPED "LS 6649" TO
 PERPETUATE HUB

RECORD OF SURVEY

LANDS OF WELPOTT-GRAY 87-72828
 WITHIN PARADISE RANCH ESTATES, INVERNESS
 MARIN COUNTY CALIFORNIA.
 CALIFORNIA 114-110-15 6703 SHEET 1 of 1



DECEMBER 1987
 JERRICO ASSOCIATES 77 MARK DRIVE SAN RAFAEL, CALIFORNIA