

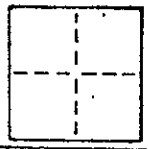
A. P. # 114-100-17

### CORNER RECORD

COUNTY OF Marin T. \_\_\_\_\_ R. \_\_\_\_\_ MERIDIAN \_\_\_\_\_ CALIFORNIA

CORNER TYPE: GOVT. CORNER  MEANDER  RANCHO  CONTROL  OTHER

CORNER IDENTIFICATION — DATE OF VISIT \_\_\_\_\_ 19\_\_\_\_



CORNER — LEFT AS FOUND  FOUND AND TAGGED  REESTABLISHED OBLITERATED CORNER  REBUILT

PHYSICAL DESCRIPTION OF CORNER FOUND; EVIDENCE AND METHOD USED TO IDENTIFY OR REESTABLISH

Set 3/4" iron pipe with plastic plug "LS 3775" at the intersection of the courses "S 22°24'40" E 25.00'" and "S 67°35'20" W 30.00'" per 3505-OR-114, Marin County Records.

Lauritzen / J-1366

PHYSICAL DESCRIPTION OF MONUMENTS: REBUILT OR PERPETUATED

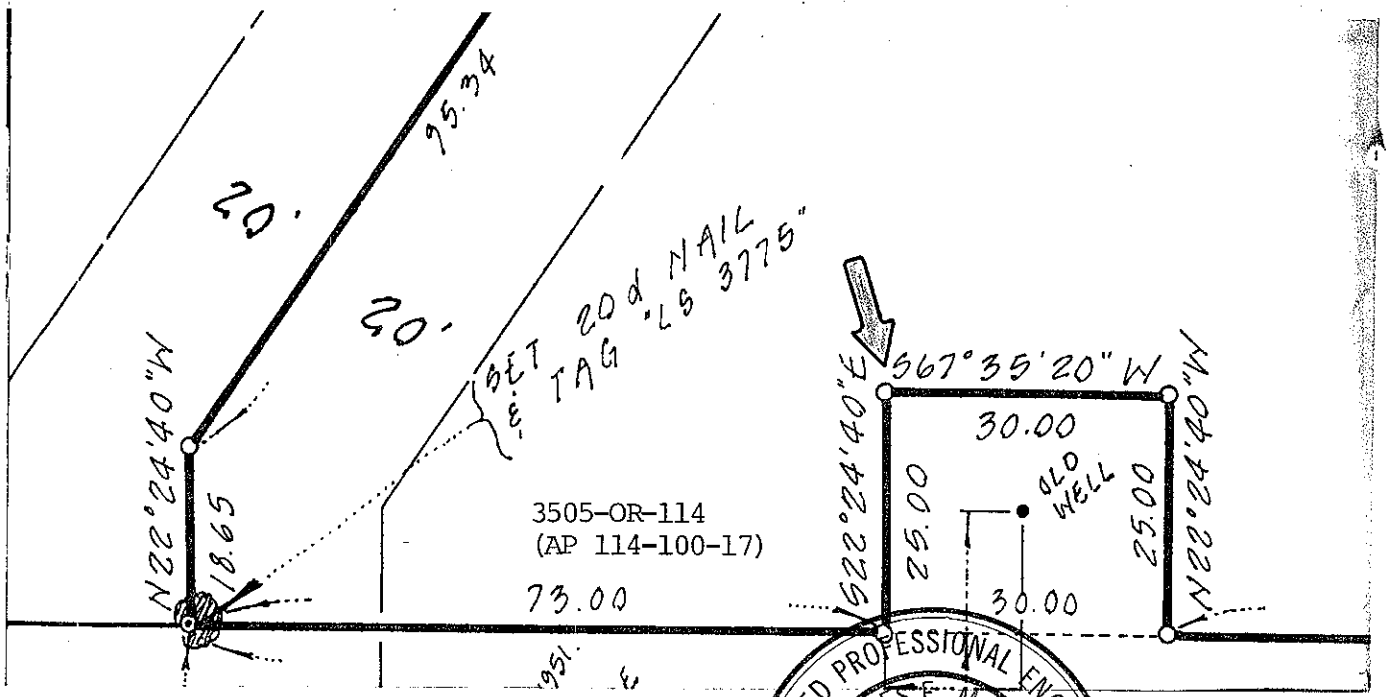
As Shown

CALIFORNIA COORDINATE SYSTEM ORDER: FIRST  SECOND  THIRD

STATIONS USED: NGS (USC & GS)  STATE  COUNTY  OTHER  STATION \_\_\_\_\_ STATION \_\_\_\_\_

ZONE \_\_\_\_\_ ELEVATION \_\_\_\_\_ NORTHINGS (Y) \_\_\_\_\_ EASTINGS (X) \_\_\_\_\_

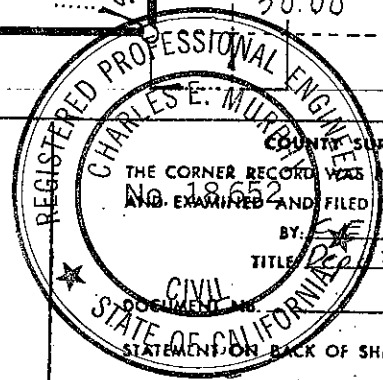
SKETCH: (Include reference tie or witness points, remarks and topo of area)



**SURVEYOR'S CERTIFICATE**

THIS CORNER RECORD WAS PREPARED BY ME OR UNDER MY DIRECTION IN CONFORMANCE WITH THE LAND SURVEYORS ACT ON February 28 1985

SIGNED: Joseph J. J...  
L.S. or R.C.E. No.: LS 3775



COUNTY SURVEYOR'S CERTIFICATE

THE CORNER RECORD WAS RECEIVED 3-4 1985  
AND EXAMINED AND FILED 3-5 1985

BY: C.E. Murphy  
TITLE: County Surveyor

SEAL

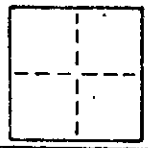
YES  NO

# CORNER RECORD

COUNTY OF Marin T. \_\_\_\_\_ R. \_\_\_\_\_ MERIDIAN \_\_\_\_\_ CALIFORNIA

CORNER TYPE: GOVT. CORNER  MEANDER  RANCHO  CONTROL  OTHER

CORNER IDENTIFICATION -- DATE OF VISIT \_\_\_\_\_ 19\_\_\_\_



CORNER -- LEFT AS FOUND  FOUND AND TAGGED  REESTABLISHED OBLITERATED CORNER  REBUILT

**PHYSICAL DESCRIPTION OF CORNER FOUND; EVIDENCE AND METHOD USED TO IDENTIFY OR REESTABLISH**

Set 3/4" iron pipe with plastic plug "LS 3775" at the intersection of the courses "N 22°24'40" W 18.65'" and "N 11°39'10" E 186.935'" per 3505-OR-114, Marin County Records.  
Lauritzen / J-1366

**PHYSICAL DESCRIPTION OF MONUMENTS REBUILT OR PERPETUATED**

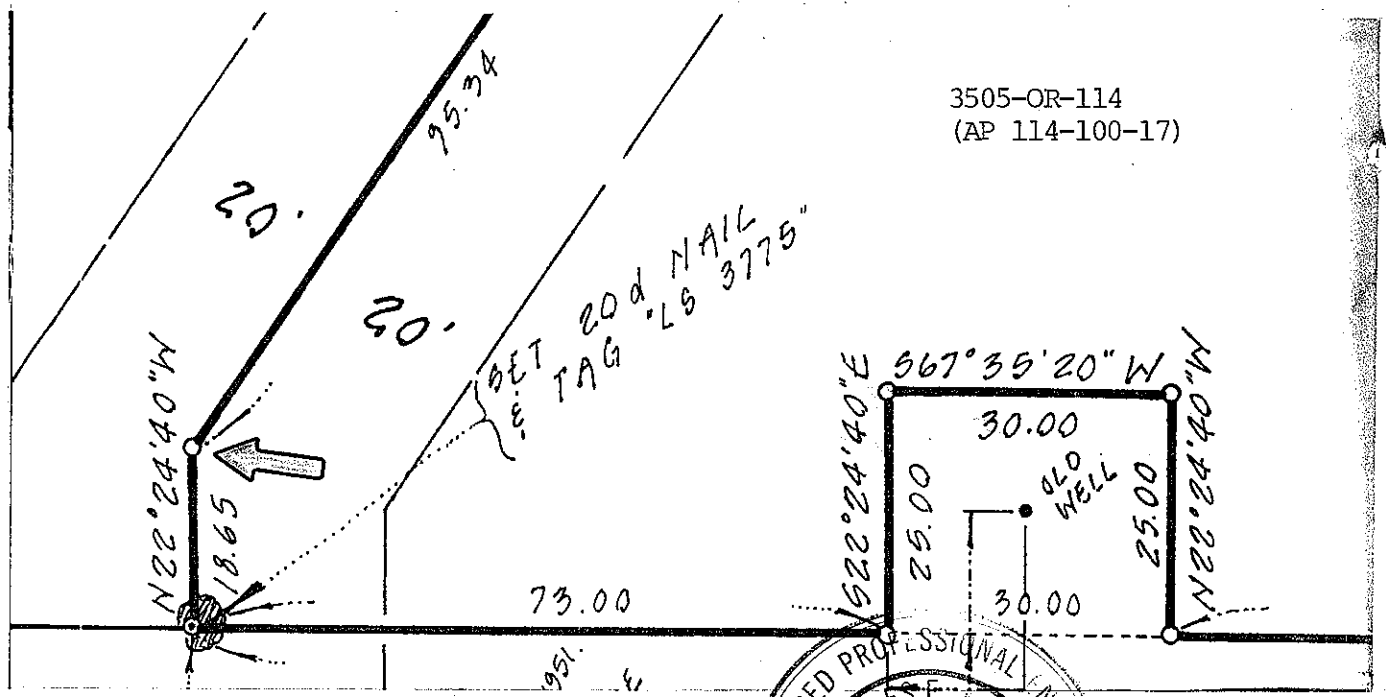
As Shown

CALIFORNIA COORDINATE SYSTEM ORDER: FIRST  SECOND  THIRD

STATIONS USED: NGS (USC & GS)  STATE  COUNTY  OTHER  STATION \_\_\_\_\_ STATION \_\_\_\_\_

ZONE \_\_\_\_\_ ELEVATION \_\_\_\_\_ NORTHINGS (Y) \_\_\_\_\_ EASTINGS (X) \_\_\_\_\_

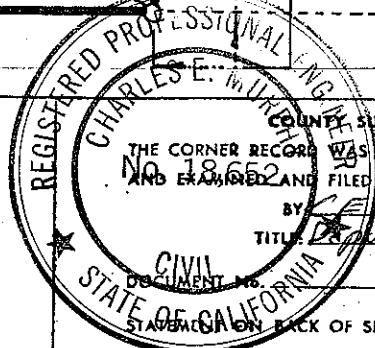
**SKETCH: (Include reference tie or witness points, remarks and topo of area)**



**SURVEYOR'S CERTIFICATE**

THIS CORNER RECORD WAS PREPARED BY ME OR UNDER MY DIRECTION IN CONFORMANCE WITH THE LAND SURVEYORS ACT ON February 28 1985

SIGNED: [Signature]  
L.S. or R.C.F. No.: LS 3775



**COUNTY SURVEYOR'S CERTIFICATE**

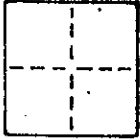
THE CORNER RECORD WAS RECEIVED 3-4 1985  
AND EXAMINED AND FILED 3-5 1985  
BY C. E. Murphy  
TITLE Deputy County Surveyor

SEAL

YES  NO

# CORNER RECORD

COUNTY OF Marin T. \_\_\_\_\_ R. \_\_\_\_\_ MERIDIAN \_\_\_\_\_ CALIFORNIA  
 CORNER TYPE: GOVT. CORNER  MEANDER  RANCHO  CONTROL  OTHER   
 CORNER IDENTIFICATION — DATE OF VISIT \_\_\_\_\_ 19\_\_\_\_



CORNER — LEFT AS FOUND  FOUND AND TAGGED  REESTABLISHED OBLITERATED CORNER  REBUILT

PHYSICAL DESCRIPTION OF CORNER FOUND; EVIDENCE AND METHOD USED TO IDENTIFY OR REESTABLISH  
 Set 3/4" iron pipe with plastic plug "LS 3775" at the intersection of the courses "N 67°35'20" E 73.00'" and "S 22°24'40" E 25.00'" per 3505-OR-114, Marin County Records.

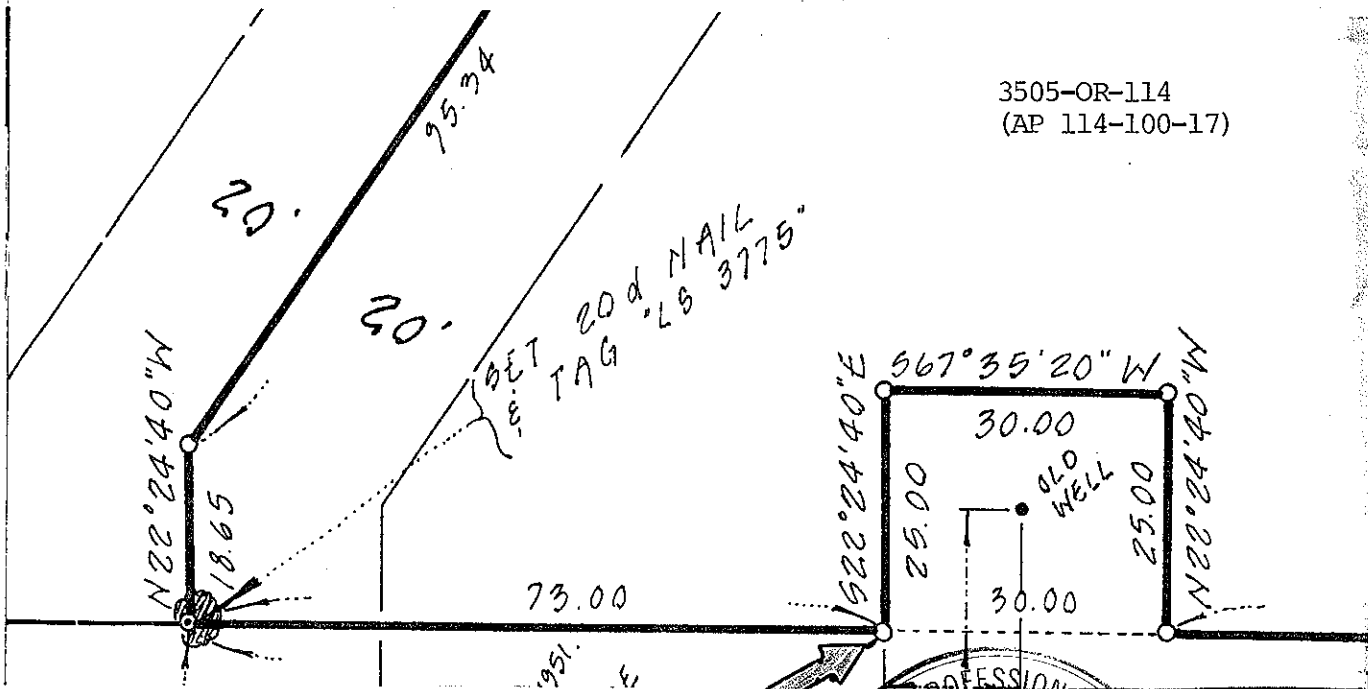
Lauritzen / J-1366

PHYSICAL DESCRIPTION OF MONUMENTS REBUILT OR PERPETUATED

As Shown

CALIFORNIA COORDINATE SYSTEM ORDER: FIRST  SECOND  THIRD   
 STATIONS USED: NGS (USC & GS)  STATE  COUNTY  OTHER  STATION \_\_\_\_\_ STATION \_\_\_\_\_  
 ZONE \_\_\_\_\_ ELEVATION \_\_\_\_\_ NORTHINGS (Y) \_\_\_\_\_ EASTINGS (X) \_\_\_\_\_

SKETCH: (Include reference tie or witness points, remarks and topo of area)



**SURVEYOR'S CERTIFICATE**  
 THIS CORNER RECORD WAS PREPARED BY ME OR UNDER MY DIRECTION IN CONFORMANCE WITH THE LAND SURVEYORS ACT ON February 28 1985  
 SIGNED: [Signature]  
 L.S. or R.C.E. No.: LS 3775

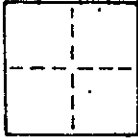
3505-OR-114  
(AP 114-100-17)

REGISTERED PROFESSIONAL SURVEYOR'S CERTIFICATE  
 THE CORNER RECORD WAS RECEIVED 3-4 1985  
 AND EXAMINED AND FILED 3-5 1985  
 No. 185  
 TITLE: Deputy County Surveyor  
 DOCUMENT No. \_\_\_\_\_  
 CIVIL  
 STATE OF CALIFORNIA

SEAL

# CORNER RECORD

COUNTY OF Marin T. \_\_\_\_\_ R. \_\_\_\_\_ MERIDIAN \_\_\_\_\_ CALIFORNIA  
 CORNER TYPE: GOVT. CORNER  MEANDER  RANCHO  CONTROL  OTHER   
 CORNER IDENTIFICATION — DATE OF VISIT \_\_\_\_\_ 19\_\_\_\_



CORNER — LEFT AS FOUND  FOUND AND TAGGED  REESTABLISHED OBLITERATED CORNER  REBUILT

PHYSICAL DESCRIPTION OF CORNER FOUND; EVIDENCE AND METHOD USED TO IDENTIFY OR REESTABLISH  
 Set 3/4" iron pipe with plastic plug "IS 3775" at the intersection of the courses  
 "N 67°35'20" E 354.451'" and "S 22°24'40" E 76.04'" per 3505-OR-114,  
 Marin County Records.

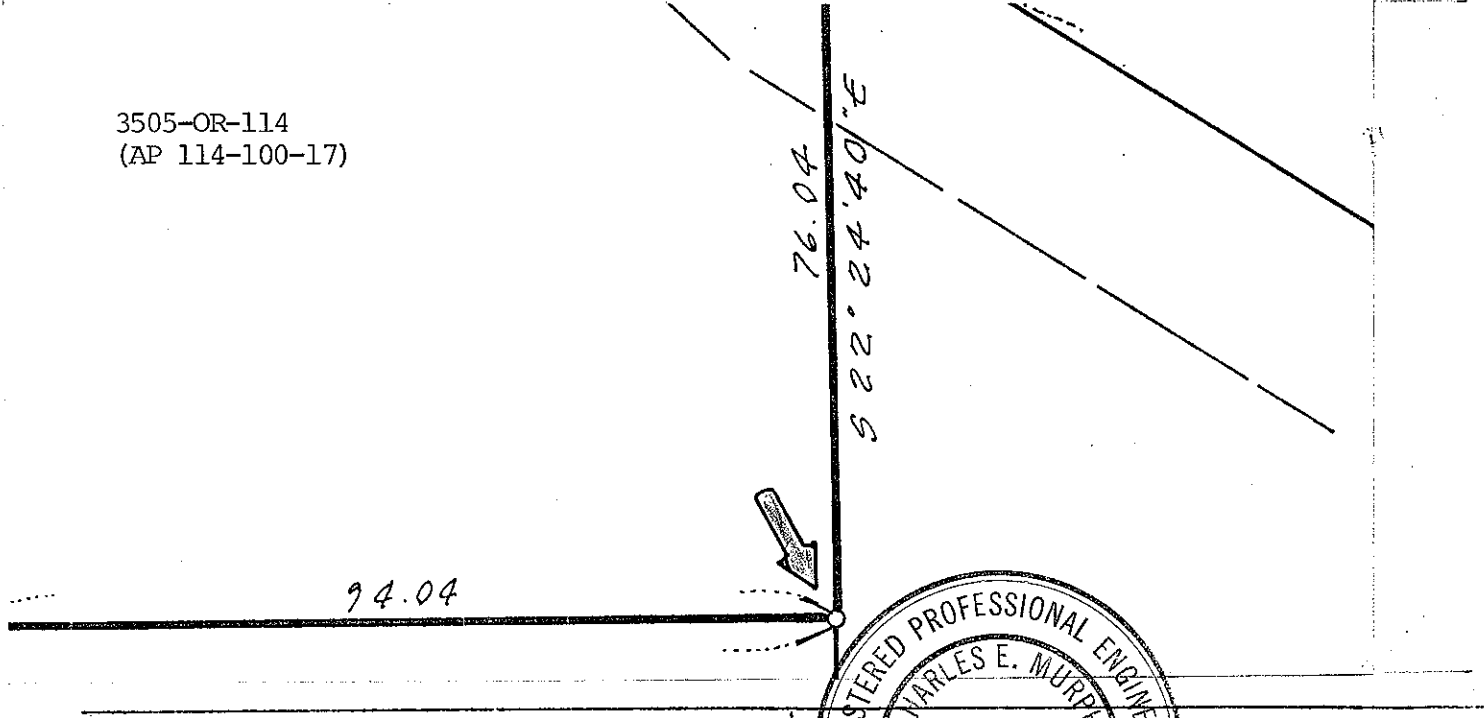
Lauritzen / J-1366

PHYSICAL DESCRIPTION OF MONUMENTS REBUILT OR PERPETUATED

As Shown

CALIFORNIA COORDINATE SYSTEM ORDER: FIRST  SECOND  THIRD   
 STATIONS USED: NGS (USC & GS)  STATE  COUNTY  OTHER  STATION \_\_\_\_\_ STATION \_\_\_\_\_  
 ZONE \_\_\_\_\_ ELEVATION \_\_\_\_\_ NORTHINGS (Y) \_\_\_\_\_ EASTINGS (X) \_\_\_\_\_

SKETCH: (Include reference tie or witness points, remarks and topo of area)



**SURVEYOR'S CERTIFICATE**  
 THIS CORNER RECORD WAS PREPARED BY ME OR UNDER MY  
 DIRECTION IN CONFORMANCE WITH THE LAND SURVEYORS ACT  
 ON February 28 19 85  
 SIGNED: [Signature]  
 L.S. or R.C.E. No. IS 3775

REGISTERED PROFESSIONAL ENGINEER  
 CHARLES E. MURPHY  
 CIVIL  
 STATE OF CALIFORNIA

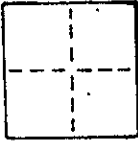
COUNTY SURVEYOR'S CERTIFICATE  
 THE CORNER RECORD WAS RECEIVED 3-4 1985  
 AND EXAMINED AND FILED 3-5 1985  
 BY: CE Murphy  
 CIVIL: Deputy County Surveyor  
 DOCUMENT NO. \_\_\_\_\_  
 STATEMENT ON BACK OF SHEET YES  NO

# CORNER RECORD

COUNTY OF Marin T. \_\_\_\_\_ R. \_\_\_\_\_ MERIDIAN CALIFORNIA

CORNER TYPE: GOVT. CORNER  MEANDER  RANCHO  CONTROL  OTHER

CORNER IDENTIFICATION — DATE OF VISIT \_\_\_\_\_ 19\_\_\_\_



CORNER — LEFT AS FOUND  FOUND AND TAGGED  REESTABLISHED OBLITERATED CORNER  REBUILT

PHYSICAL DESCRIPTION OF CORNER FOUND; EVIDENCE AND METHOD USED TO IDENTIFY OR REESTABLISH

Set 3/4" iron pipe with plastic plug "LS 3775" at the intersection of the courses "S 69°00' E 185.20'" and "S 22°24'40" E 76.04'" per 3505-OR-114, Marin County Records.

Lauritzen / J-1366

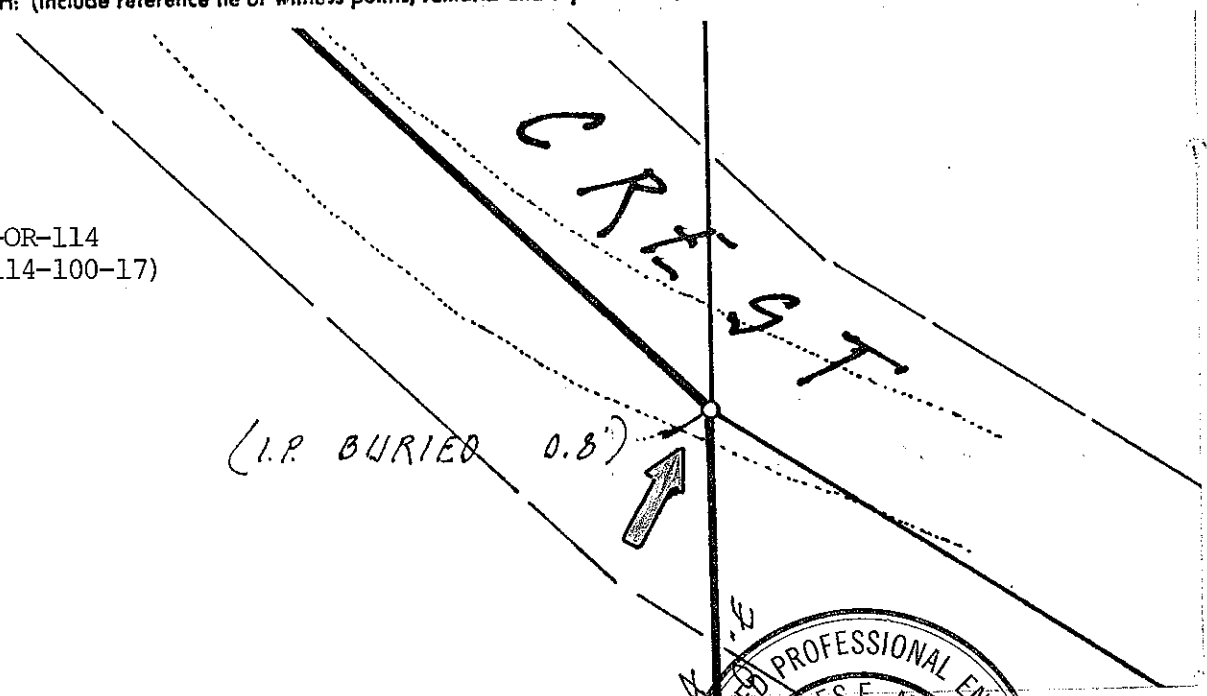
PHYSICAL DESCRIPTION OF MONUMENTS REBUILT OR PERPETUATED

As Shown

CALIFORNIA COORDINATE SYSTEM ORDER: FIRST  SECOND  THIRD   
 STATIONS USED: NGS (USC & GS)  STATE  COUNTY  OTHER  STATION \_\_\_\_\_ STATION \_\_\_\_\_  
 ZONE \_\_\_\_\_ ELEVATION \_\_\_\_\_ NORTHINGS (Y) \_\_\_\_\_ EASTINGS (X) \_\_\_\_\_

SKETCH: (Include reference tie or witness points, remarks and topo of area)

3505-OR-114  
(AP 114-100-17)

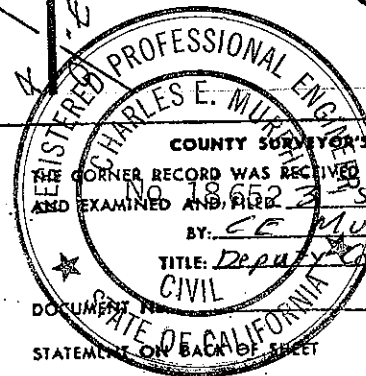


**SURVEYOR'S CERTIFICATE**

THIS CORNER RECORD WAS PREPARED BY ME OR UNDER MY DIRECTION IN CONFORMANCE WITH THE LAND SURVEYORS ACT ON February 28 1985.

SIGNED: [Signature]  
 L.S. or R.C.E. No.: LS 3775

SEAL



COUNTY SURVEYOR'S CERTIFICATE  
 THE CORNER RECORD WAS RECEIVED 3-4 1985  
 AND EXAMINED AND FILED 3-5 1985

BY: CE Murphy  
 TITLE: Deputy County Surveyor  
 CIVIL

STATEMENT ON BACK OF SHEET  
 YES  NO

# CORNER RECORD

COUNTY OF Marin T. \_\_\_\_\_ R. \_\_\_\_\_ MERIDIAN \_\_\_\_\_ CALIFORNIA

CORNER TYPE: GOVT. CORNER  MEANDER  RANCHO  CONTROL  OTHER

CORNER IDENTIFICATION — DATE OF VISIT \_\_\_\_\_ 19\_\_\_\_



CORNER — LEFT AS FOUND  FOUND AND TAGGED  REESTABLISHED OBLITERATED CORNER  REBUILT

PHYSICAL DESCRIPTION OF CORNER FOUND; EVIDENCE AND METHOD USED TO IDENTIFY OR REESTABLISH

Set 20d nail and brass tag "LS 3775" in a stump at the intersection of the courses "N 22°24'40" W 18.65'" and "N 67°35'20" E 73.00'" per 3505-OR-114, Marin County Records.

Lauritzen / J-1366

PHYSICAL DESCRIPTION OF MONUMENTS REBUILT OR PERPETUATED

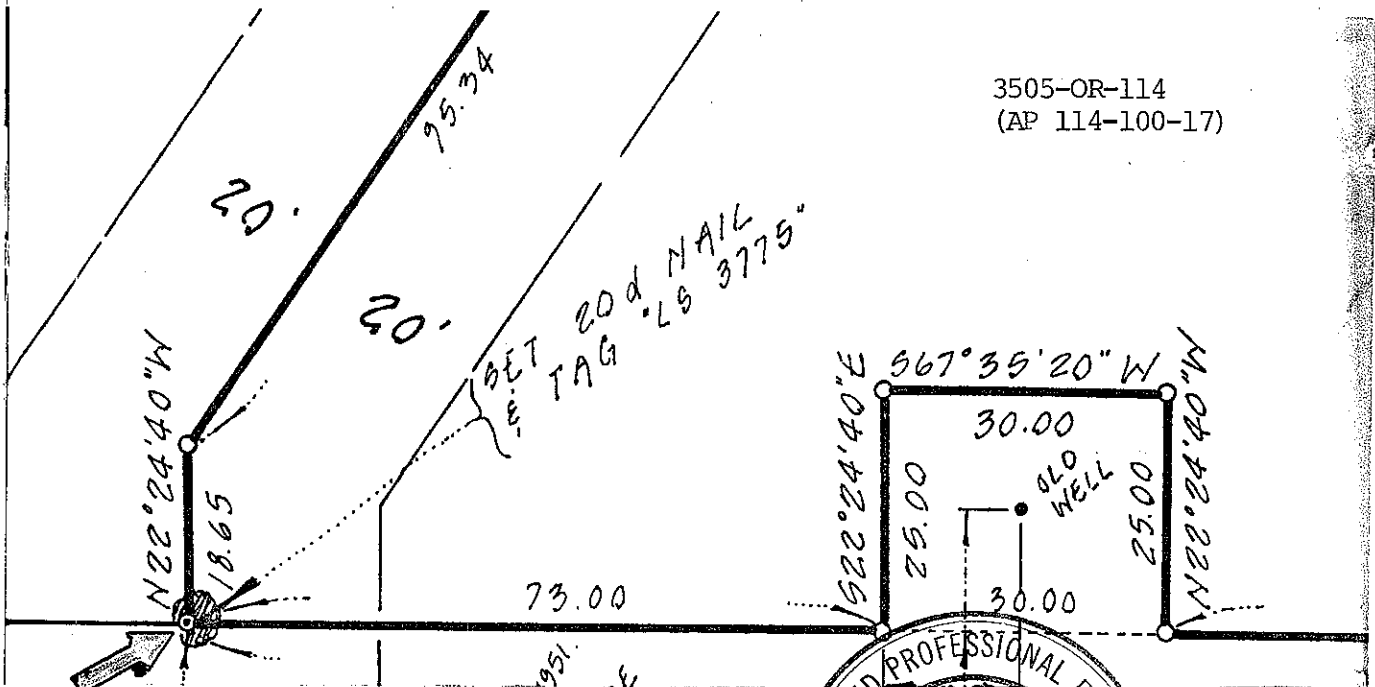
As Shown

CALIFORNIA COORDINATE SYSTEM ORDER: FIRST  SECOND  THIRD

STATIONS USED: NGS (USC & GS)  STATE  COUNTY  OTHER  STATION \_\_\_\_\_ STATION \_\_\_\_\_

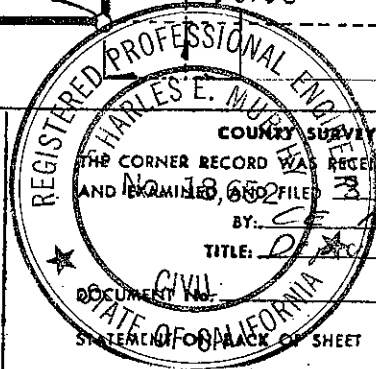
ZONE \_\_\_\_\_ ELEVATION \_\_\_\_\_ NORTHINGS (Y) \_\_\_\_\_ EASTINGS (X) \_\_\_\_\_

SKETCH: (Include reference tie or witness points, remarks and topo of area)



**SURVEYOR'S CERTIFICATE**  
 THIS CORNER RECORD WAS PREPARED BY ME OR UNDER MY DIRECTION IN CONFORMANCE WITH THE LAND SURVEYORS ACT ON February 28 19 85.

SIGNED: [Signature]  
 L.S. or R.C.E. No.: LS 3775



**COUNTY SURVEYOR'S CERTIFICATE**  
 THE CORNER RECORD WAS RECEIVED 3-4 1985  
 AND EXAMINED, AND FILED 3-5 1985  
 BY: C. E. Murphy  
 TITLE: County Surveyor

# CORNER RECORD

COUNTY OF Marin T. \_\_\_\_\_ R. \_\_\_\_\_ MERIDIAN \_\_\_\_\_ CALIFORNIA  
 CORNER TYPE: GOVT. CORNER  MEANDER  RANCHO  CONTROL  OTHER   
 CORNER IDENTIFICATION — DATE OF VISIT \_\_\_\_\_ 19\_\_\_\_



CORNER — LEFT AS FOUND  FOUND AND TAGGED  REESTABLISHED OBLITERATED CORNER  REBUILT

PHYSICAL DESCRIPTION OF CORNER FOUND; EVIDENCE AND METHOD USED TO IDENTIFY OR REESTABLISH

Set 3/4" iron pipe with plastic plug "LS3775" at the intersection of the courses "N 22°24'40" W 25.00'" and "N 67°35'20" E 251.451'" per 3505-OR-114, Marin County Records.

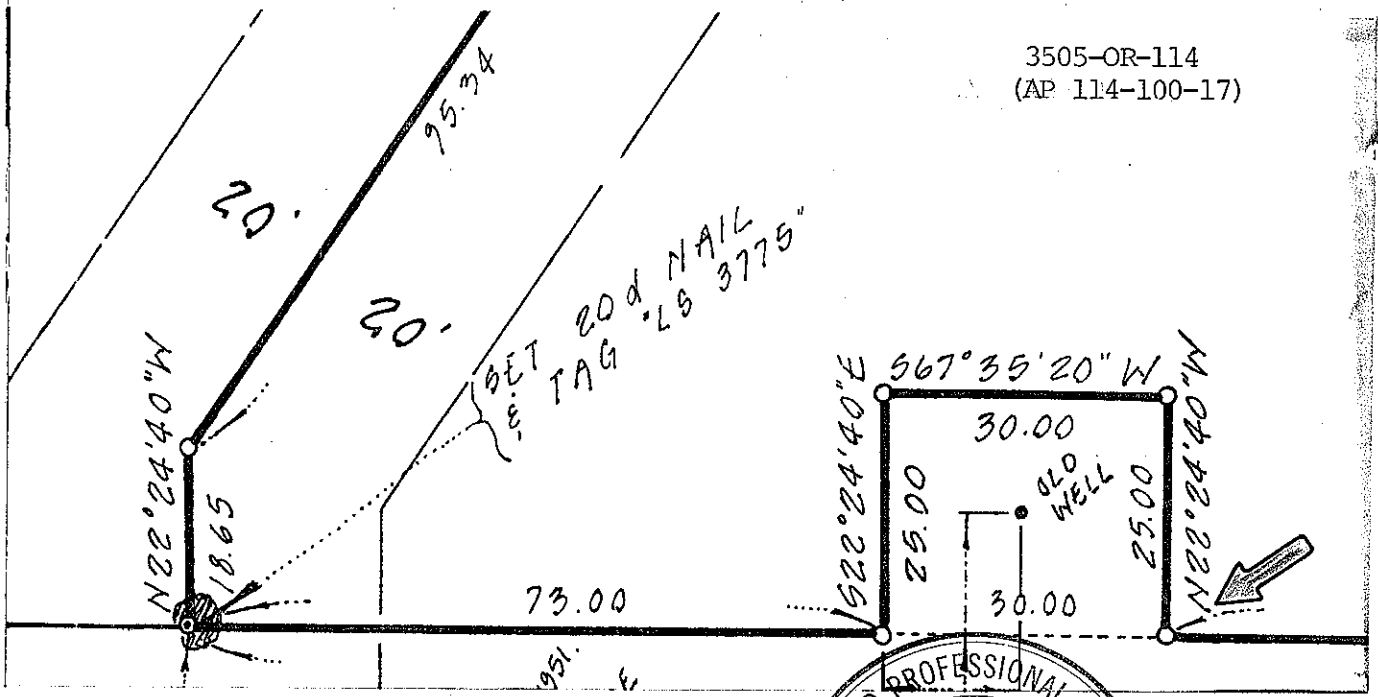
Lauritzen /J-1366

PHYSICAL DESCRIPTION OF MONUMENTS REBUILT OR PERPETUATED

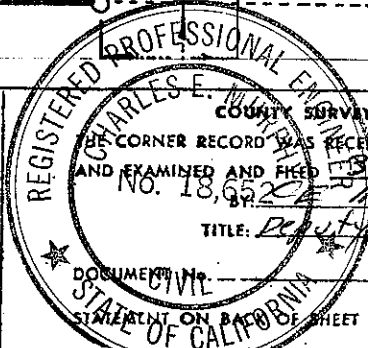
As Shown

CALIFORNIA COORDINATE SYSTEM ORDER: FIRST  SECOND  THIRD   
 STATIONS USED: NGS (USC & GS)  STATE  COUNTY  OTHER  STATION \_\_\_\_\_ STATION \_\_\_\_\_  
 ZONE \_\_\_\_\_ ELEVATION \_\_\_\_\_ NORTHINGS (Y) \_\_\_\_\_ EASTINGS (X) \_\_\_\_\_

SKETCH: (Include reference tie or witness points, remarks and topo of area)



**SURVEYOR'S CERTIFICATE**  
 THIS CORNER RECORD WAS PREPARED BY ME OR UNDER MY DIRECTION IN CONFORMANCE WITH THE LAND SURVEYORS ACT ON February 28 19 85  
 SIGNED: [Signature]  
 L.S. or R.C.E. No.: LS 3775



**COUNTY SURVEYOR'S CERTIFICATE**  
 THIS CORNER RECORD WAS RECEIVED 3-4 19 85  
 AND EXAMINED AND FILED 3-5 19 85  
 NO. 18,652  
 BY [Signature]  
 TITLE: Deputy County Surveyor

SEAL

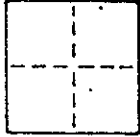
YES  NO

# CORNER RECORD

COUNTY OF Marin T. \_\_\_\_\_ R. \_\_\_\_\_ MERIDIAN \_\_\_\_\_ CALIFORNIA

CORNER TYPE: GOV'T. CORNER  MEANDER  RANCHO  CONTROL  OTHER

CORNER IDENTIFICATION — DATE OF VISIT \_\_\_\_\_ 19\_\_\_\_



CORNER — LEFT AS FOUND  FOUND AND TAGGED  REESTABLISHED OBLITERATED CORNER  REBUILT

PHYSICAL DESCRIPTION OF CORNER FOUND; EVIDENCE AND METHOD USED TO IDENTIFY OR REESTABLISH  
 Set 3/4" iron pipe with plastic plug "LS 3775" at the intersection of the courses  
 "N 11°39'10" E 186.935'" and "N 53°05' E 119.00'" per 3505-OR-114, Marin  
 County Records.

Lauritzen / J-1366

PHYSICAL DESCRIPTION OF MONUMENTS REBUILT OR PERPETUATED

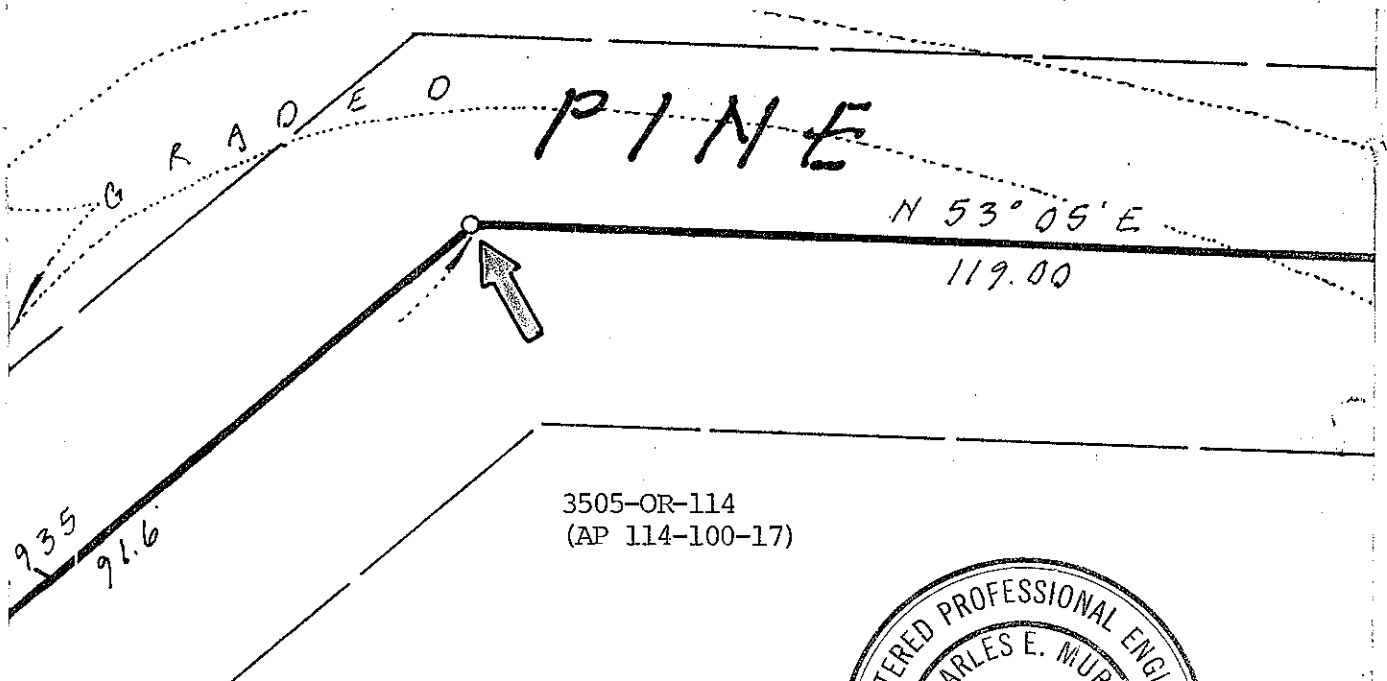
As Shown

CALIFORNIA COORDINATE SYSTEM ORDER: FIRST  SECOND  THIRD

STATIONS USED: NGS (USC & GS)  STATE  COUNTY  OTHER  STATION \_\_\_\_\_ STATION \_\_\_\_\_

ZONE \_\_\_\_\_ ELEVATION \_\_\_\_\_ NORTHINGS (Y) \_\_\_\_\_ EASTINGS (X) \_\_\_\_\_

SKETCH: (Include reference tie or witness points, remarks and topo of area)



**SURVEYOR'S CERTIFICATE**  
 THIS CORNER RECORD WAS PREPARED BY ME OR UNDER MY  
 DIRECTION IN CONFORMANCE WITH THE LAND SURVEYORS ACT  
 ON February 28 1985

SIGNED: [Signature]  
 L.S. or R.C.E. No.: LS 3775

REGISTERED PROFESSIONAL ENGINEER  
 CHARLES E. MURPHY

No. 18,055 COUNTY SURVEYOR'S CERTIFICATE  
 THE CORNER RECORD WAS RECEIVED 3-4 1985  
 AND EXAMINED AND FILED 5 1985  
 CIVIL CE Murphy  
 STATE OF CALIFORNIA Marin County Surveyor

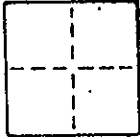
DOCUMENT NO. \_\_\_\_\_  
 STATEMENT ON BACK OF SHEET YES  NO

SEAL



# CORNER RECORD

COUNTY OF \_\_\_\_\_ T. \_\_\_\_\_ R. \_\_\_\_\_ MERIDIAN \_\_\_\_\_ CALIFORNIA  
 CORNER TYPE: GOV'T. CORNER  MEANDER  RANCHO  CONTROL  OTHER   
 CORNER IDENTIFICATION — DATE OF VISIT \_\_\_\_\_ 19\_\_\_\_



CORNER — LEFT AS FOUND  FOUND AND TAGGED  REESTABLISHED OBLITERATED CORNER  REBUILT

PHYSICAL DESCRIPTION OF CORNER FOUND; EVIDENCE AND METHOD USED TO IDENTIFY OR REESTABLISH

Set lead plug with brass tag "LS 3775" at the intersection of the courses "N 53°05' E 119.00'" and "S 69°00' E 185.20'" per 3505-OR-114, Marin County Records.

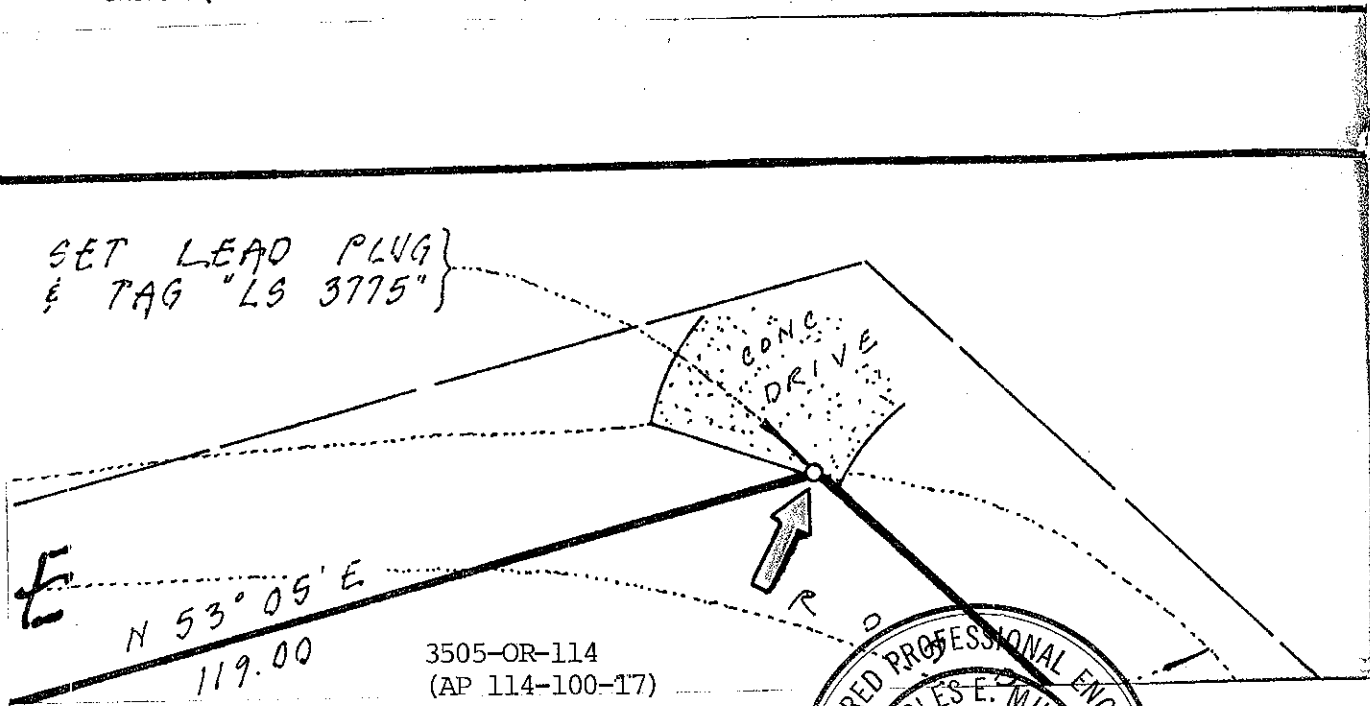
Lauritzen / J-1366

PHYSICAL DESCRIPTION OF MONUMENTS REBUILT OR PERPETUATED

As Shown

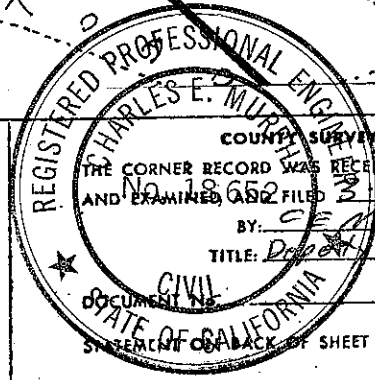
CALIFORNIA COORDINATE SYSTEM ORDER: FIRST  SECOND  THIRD   
 STATIONS USED: NGS (USC & GS)  STATE  COUNTY  OTHER  STATION \_\_\_\_\_ STATION \_\_\_\_\_  
 ZONE \_\_\_\_\_ ELEVATION \_\_\_\_\_ NORTHINGS (Y) \_\_\_\_\_ EASTINGS (X) \_\_\_\_\_

SKETCH: (Include reference tie or witness points, remarks and topo of area)



**SURVEYOR'S CERTIFICATE**  
 THIS CORNER RECORD WAS PREPARED BY ME OR UNDER MY DIRECTION IN CONFORMANCE WITH THE LAND SURVEYORS ACT ON February 28 1985

SIGNED: [Signature]  
 L.S. or P.C.E. No.: LS 3775



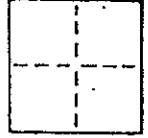
COUNTY SURVEYOR'S CERTIFICATE  
 THE CORNER RECORD WAS RECEIVED 3-4 1985  
 AND EXAMINED AND FILED 3-5 1985  
 BY: C. E. Murphy  
 TITLE: Deputy County Surveyor

SEAL

YES  NO

# CORNER RECORD

COUNTY OF Marin T. \_\_\_\_\_ R. \_\_\_\_\_ MERIDIAN \_\_\_\_\_ CALIFORNIA  
 CORNER TYPE: GOVT. CORNER  MEANDER  RANCHO  CONTROL  OTHER   
 CORNER IDENTIFICATION — DATE OF VISIT \_\_\_\_\_ 19\_\_\_\_



CORNER — LEFT AS FOUND  FOUND AND TAGGED  REESTABLISHED OBLITERATED CORNER  REBUILT

PHYSICAL DESCRIPTION OF CORNER FOUND, EVIDENCE AND METHOD USED TO IDENTIFY OR REESTABLISH  
 Set 3/4" iron pipe with plastic plug "LS 3775" at the intersection of the courses "S 67°35'20" W 30.00'" and "N 22°24'40" W 25.00'" per 3505-OR-114, Marin County Records.

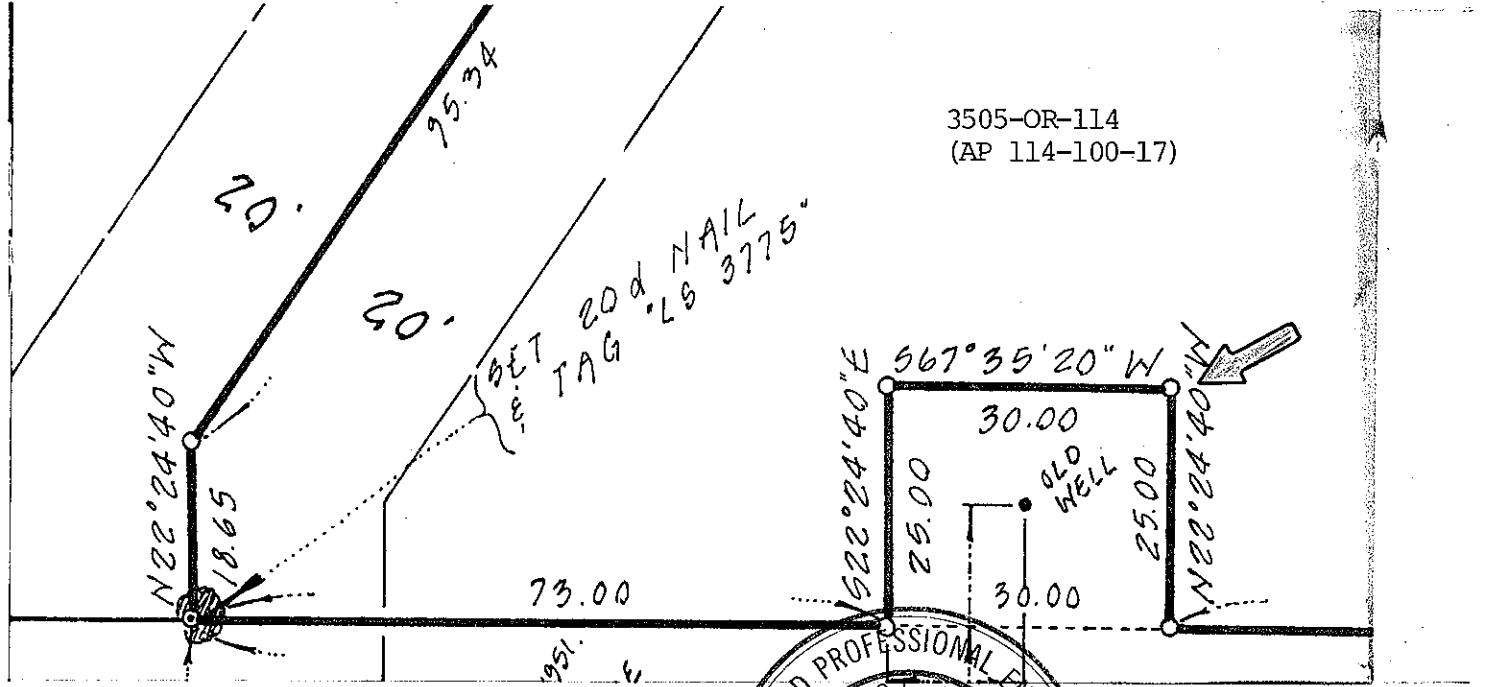
Lauritzen / J-1366

PHYSICAL DESCRIPTION OF MONUMENTS REBUILT OR PERPETUATED

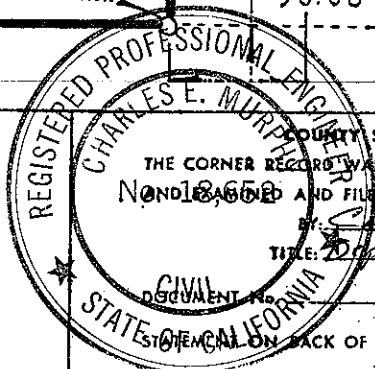
As Shown

CALIFORNIA COORDINATE SYSTEM ORDER: FIRST  SECOND  THIRD   
 STATIONS USED: NGS (USC & GS)  STATE  COUNTY  OTHER  STATION \_\_\_\_\_ STATION \_\_\_\_\_  
 ZONE \_\_\_\_\_ ELEVATION \_\_\_\_\_ NORTHINGS (Y) \_\_\_\_\_ EASTINGS (X) \_\_\_\_\_

SKETCH: (Include reference tie or witness points, remarks and topo of area)



**SURVEYOR'S CERTIFICATE**  
 THIS CORNER RECORD WAS PREPARED BY ME OR UNDER MY DIRECTION IN CONFORMANCE WITH THE LAND SURVEYORS ACT ON February 28 19 85  
 SIGNED: [Signature]  
 L.S. or R.C.E. No.: LS 3775



COUNTY SURVEYOR'S CERTIFICATE  
 THE CORNER RECORD WAS RECEIVED 3-4 1985  
 NON-RECORDED AND FILED 3-5-85 19\_\_\_\_  
 BY [Signature]  
 TITLE: Deputy County Surveyor  
 DOCUMENT NO. \_\_\_\_\_  
 STATEMENT ON BACK OF SHEET

SEAL

YES  NO