

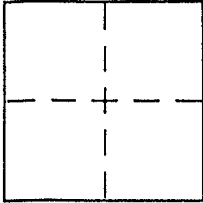
CORNER RECORD

Document Number _____

City of Inverness

County of Marin, California

Brief Legal Description Being the same as described in Doc. No. 2003-95915



CORNER TYPE

Government Corner Control
Meander Property
Rancho Other
Date of Survey Feb. 10, 2005

COORDINATES (Optional)

N. _____
E. _____
Zone _____ NAD27 NAD83
NAD83 Epoch _____
Elev. _____
Vert. Datum: NGVD29 NAVD88
Meas. Units: Metric Imperial

Corner - Left as found Found and tagged Established Reestablished Rebuilt

Identification and type of corner found: Evidence used to identify or procedure used to establish or reestablish the corner:

Found Monuments as shown on Record of Survey recorded in Book 11 of Surveys at Page 1, Marin County Records and as shown on page 2.

A description of the physical condition of the monument as found and as set or reset: Set 3/4" Iron Pipe with plastic cap "LS 5814, as shown on page 2.

SURVEYOR'S STATEMENT

This Corner Record was prepared by me or under my direction in conformance with the Land Surveyor's Act on Feb. 26, 2005

Signed [Signature] P.L.S or R.C.E. No. LS 5814

COUNTY SURVEYOR'S STATEMENT

This Corner Record was received MARCH 2, 2005

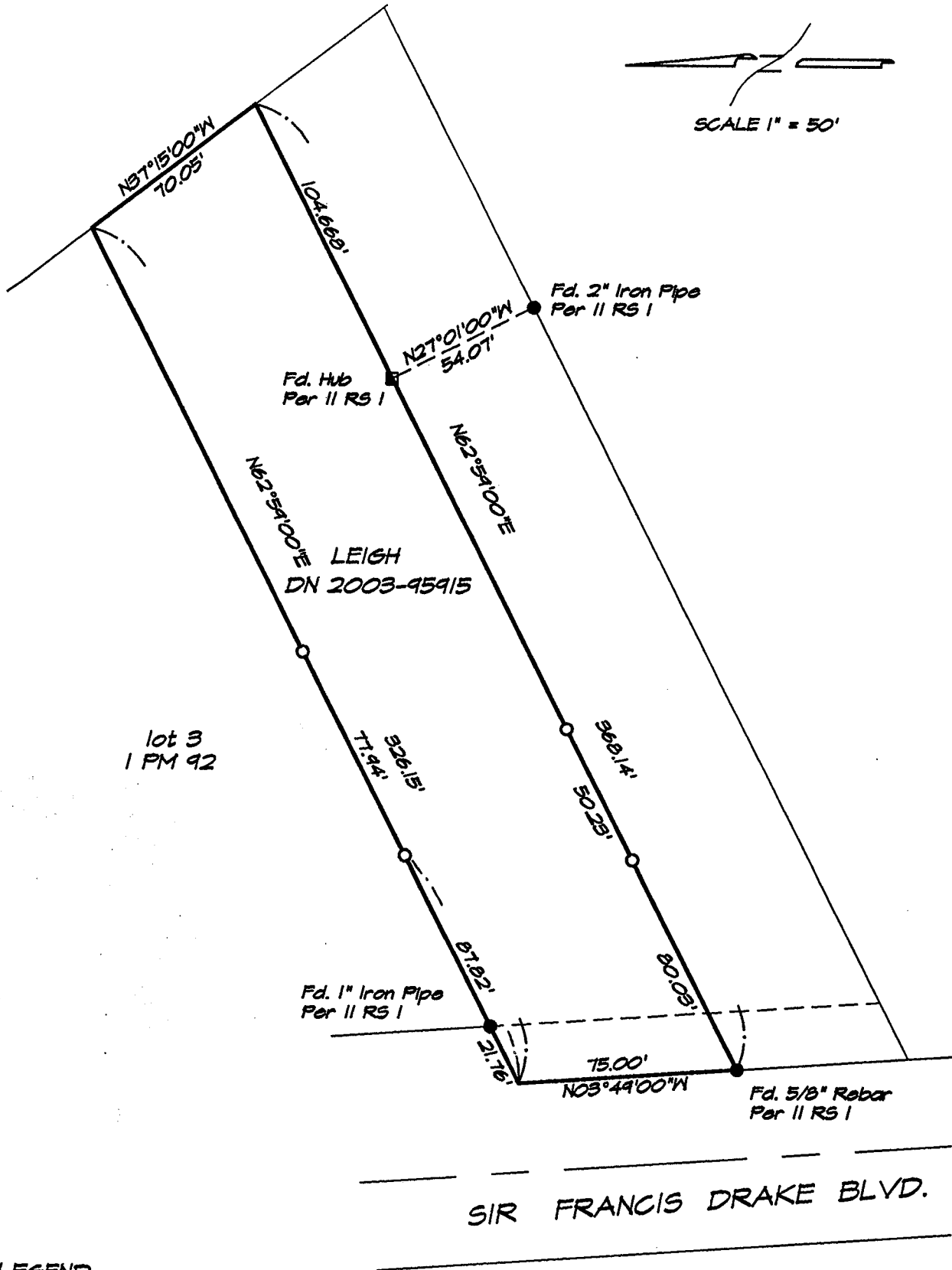
and examined and filed APRIL 14, 2005

Signed [Signature] P.L.S or R.C.E. No. 7128

Title COUNTY SURVEYOR

County Surveyor's Comment _____





LEGEND

- = Found monument as shown.
- = Set 3/4" Iron Pipe with plastic cap "LS 5814"