

CORNER RECORD

COUNTY OF MARIN T. _____ R. _____ MERIDIAN _____ CALIFORNIA

CORNER TYPE: GOVT. CORNER MEANDER RANCHO CONTROL OTHER

CORNER IDENTIFICATION — DATE OF VISIT _____ 19____



CORNER — LEFT AS FOUND FOUND AND TAGGED REESTABLISHED OBLITERATED CORNER REBUILT

PHYSICAL DESCRIPTION OF CORNER FOUND; EVIDENCE AND METHOD USED TO IDENTIFY OR REESTABLISH

Found hub intact but in poor condition

PHYSICAL DESCRIPTION OF MONUMENTS REBUILT OR PERPETUATED

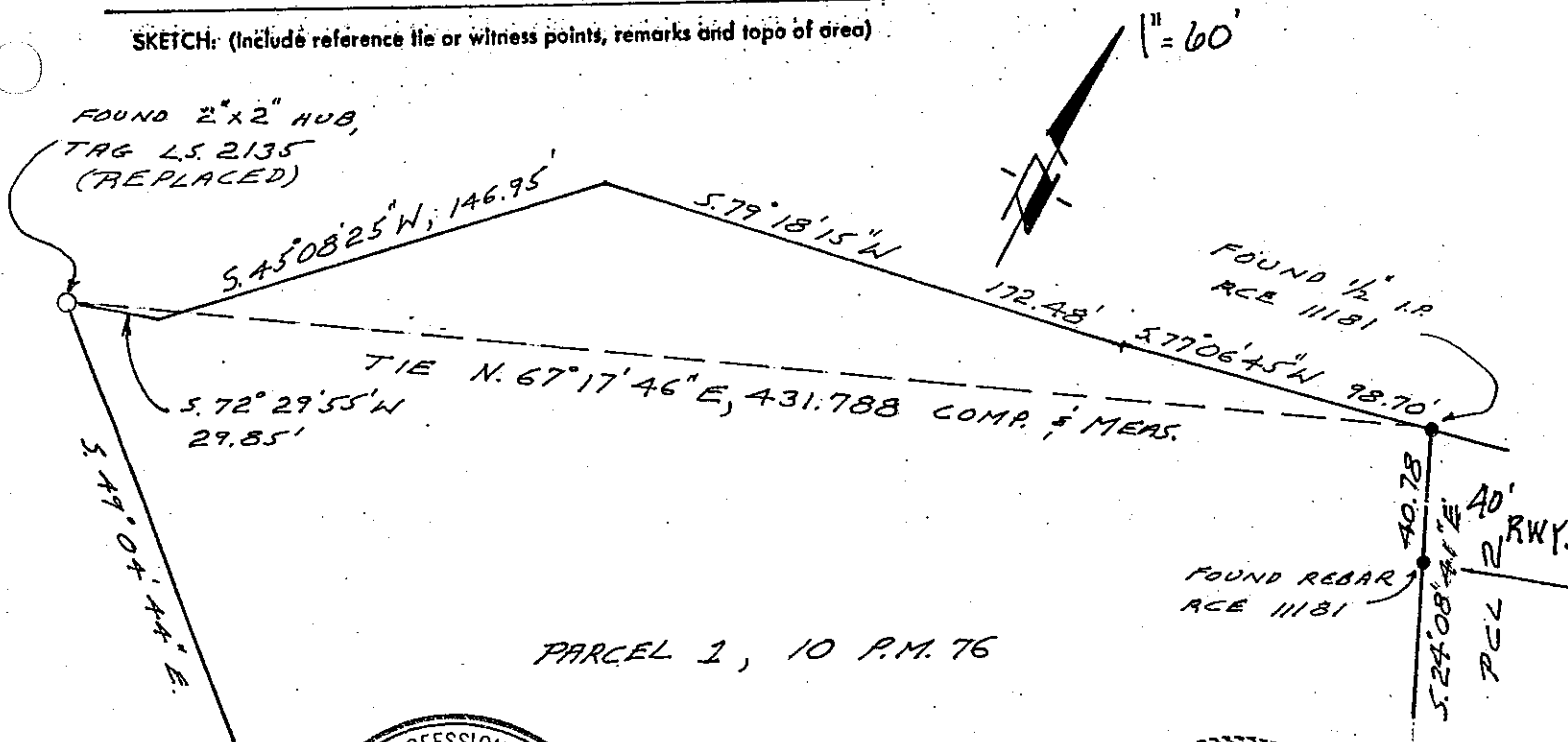
○ indicates 3/4" iron pipe, tag RCE 17,486 set

CALIFORNIA COORDINATE SYSTEM ORDER: FIRST SECOND THIRD

STATIONS USED: NGS (USC & GS) STATE COUNTY OTHER STATION _____ STATION _____

ZONE _____ ELEVATION _____ NORTHINGS (Y) _____ EASTINGS (X) _____

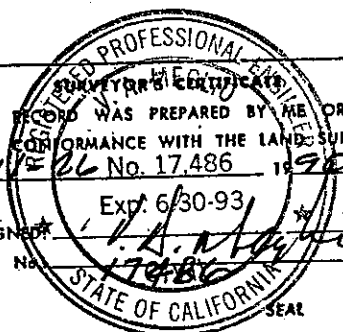
SKETCH: (Include reference file or witness points, remarks and topo of area)



PARCEL 1, 10 P.M. 76

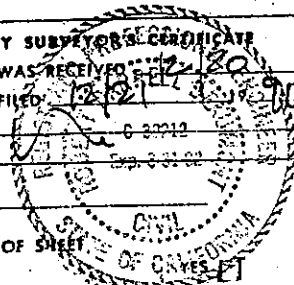
THIS CORNER RECORD WAS PREPARED BY ME OR UNDER MY DIRECTION IN PERFORMANCE WITH THE LAND SURVEYORS ACT ON _____

FILE No. 17,486 1990
 Exp. 6/30-93
 SIGNATURE: *[Signature]*
 R.C.E. No. 17486



COUNTY SUBVEYOR'S CERTIFICATE
 THE CORNER RECORD WAS RECEIVED _____ 1990
 AND EXAMINED AND FILED _____

BY: _____
 TITLE: _____
 DOCUMENT No. _____
 STATEMENT ON BACK OF SHEET _____

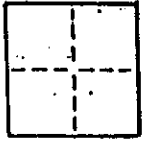


CORNER RECORD

COUNTY OF MARIN T. _____ R. _____ MERIDIAN CALIFORNIA

CORNER TYPE: GOVT. CORNER MEANDER RANCHO CONTROL OTHER

CORNER IDENTIFICATION — DATE OF VISIT _____ 19__



CORNER — LEFT AS FOUND FOUND AND TAGGED REESTABLISHED OBLITERATED CORNER REBUILT

PHYSICAL DESCRIPTION OF CORNER FOUND; EVIDENCE AND METHOD USED TO IDENTIFY OR REESTABLISH.

Found monuments shown as noted on 10 P.M. 76.

PHYSICAL DESCRIPTION OF MONUMENTS REBUILT OR PERPETUATED

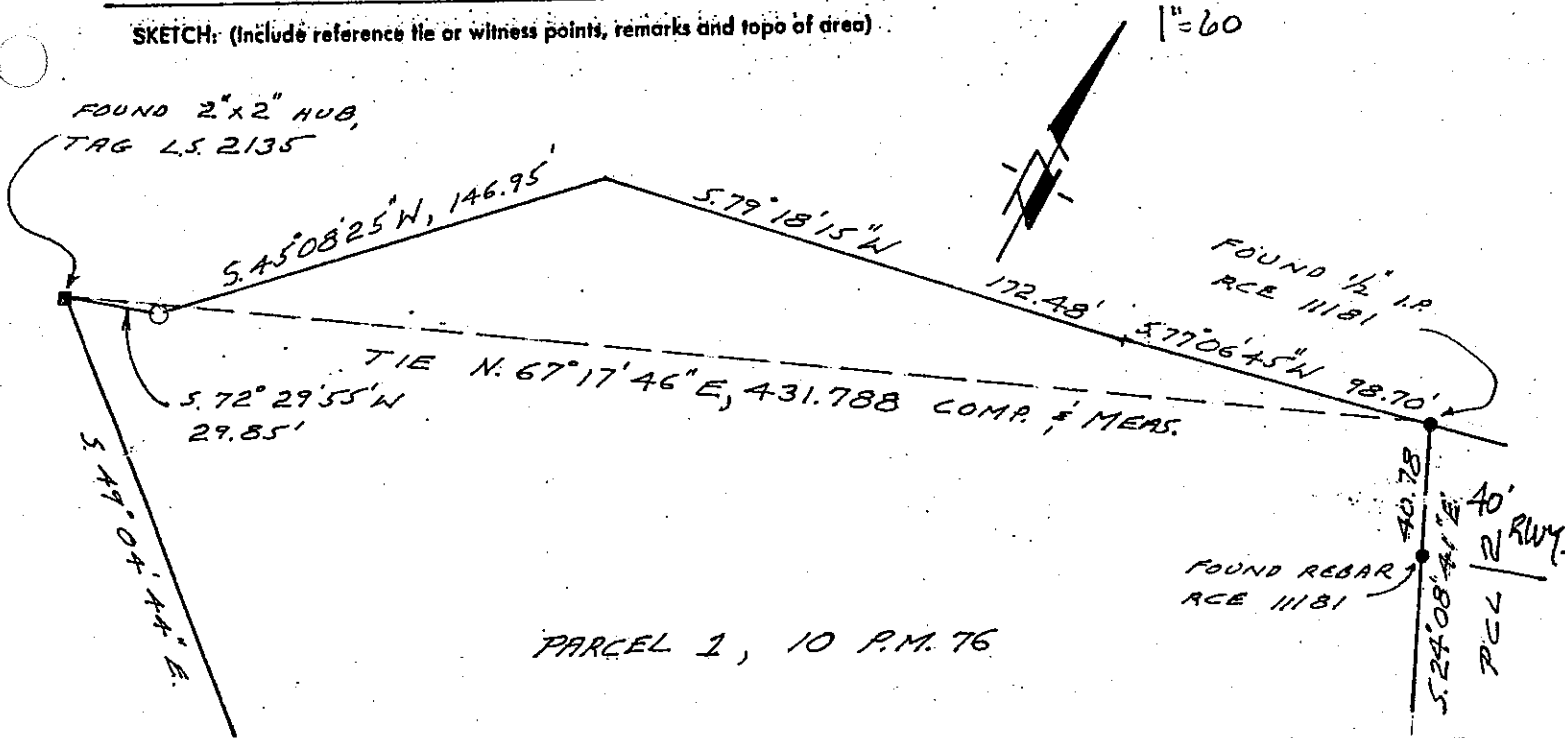
○ indicates 3/4" iron pipe, tag RCE 17,486 set

CALIFORNIA COORDINATE SYSTEM ORDER: FIRST SECOND THIRD

STATIONS USED: NGS (USC & GS) STATE COUNTY OTHER STATION _____ STATION _____

ZONE _____ ELEVATION _____ NORTHINGS (Y) _____ EASTINGS (X) _____

SKETCH: (Include reference tie or witness points, remarks and topo of area)



SURVEYOR'S CERTIFICATE

THIS CORNER RECORD WAS PREPARED BY ME OR UNDER MY DIRECTION IN CONFORMANCE WITH THE LAND SURVEYORS ACT ON 11-26 1990

SIGNED: [Signature] No. 17486 Exp. 6-30-93

R.C.E. No. 17486

STATE OF CALIFORNIA

COUNTY SURVEYOR'S CERTIFICATE

THE CORNER RECORD WAS RECEIVED BY ME OR UNDER MY DIRECTION AND EXAMINED AND FILED IN THE PUBLIC RECORDS ON 11-26 1990

BY: [Signature] TITLE: C 50212 Exp. 3-31-92

DOCUMENT No. _____

STATEMENT ON BACK OF SHEET

CIVIL ENGINEER

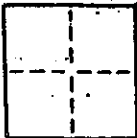
STATE OF CALIFORNIA

CORNER RECORD

COUNTY OF MARIN T. _____ R. _____ MERIDIAN _____ CALIFORNIA

CORNER TYPE: GOVT. CORNER MEANDER RANCHO CONTROL OTHER

CORNER IDENTIFICATION — DATE OF VISIT _____ 19____



CORNER — LEFT AS FOUND FOUND AND TAGGED REESTABLISHED OBLITERATED CORNER REBUILT

PHYSICAL DESCRIPTION OF CORNER FOUND; EVIDENCE AND METHOD USED TO IDENTIFY OR REESTABLISH.

Found monuments shown as noted on 10 P.M. 76.

PHYSICAL DESCRIPTION OF MONUMENTS REBUILT OR PERPETUATED

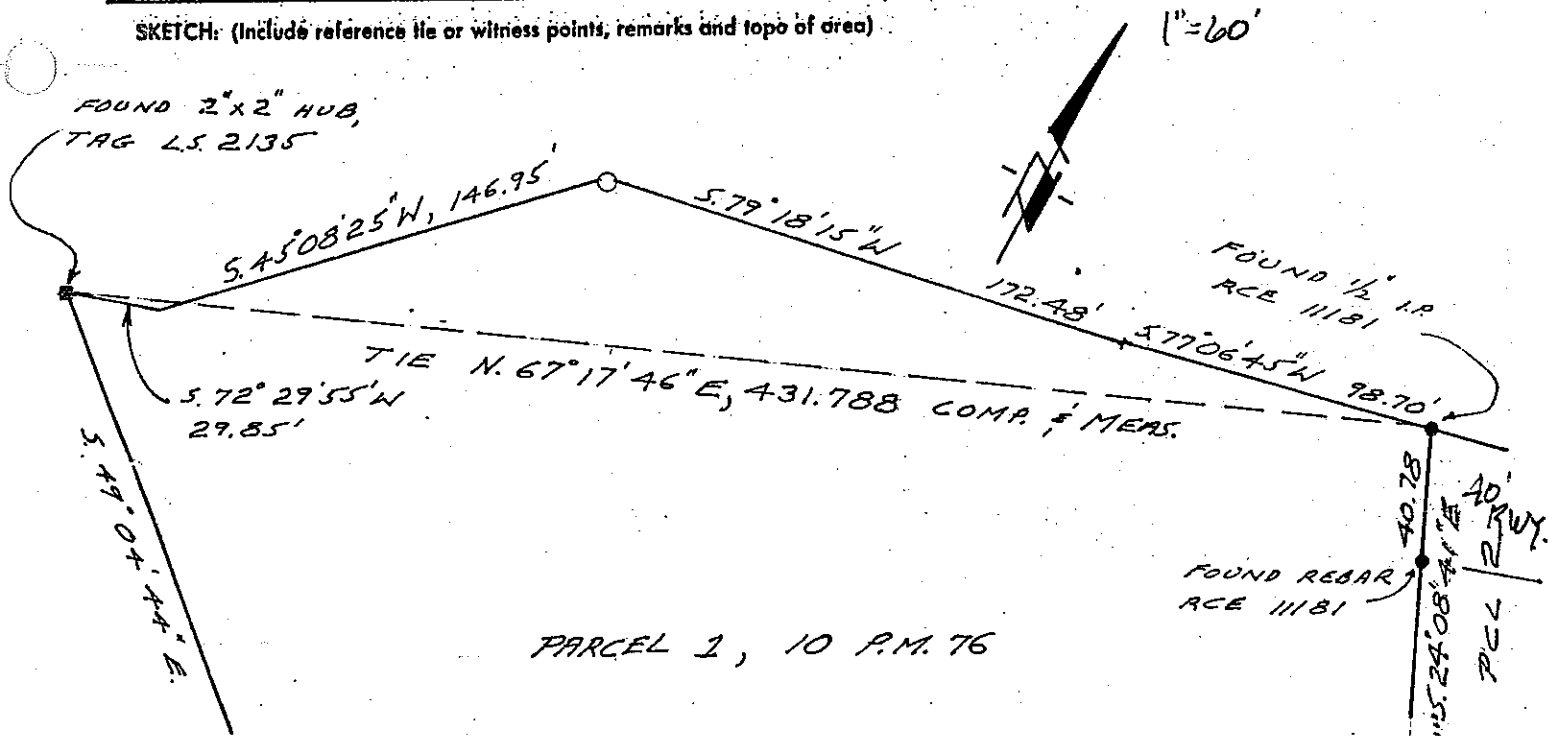
○ indicates 3/4" iron pipe, tag RCE 17,486 set

CALIFORNIA COORDINATE SYSTEM ORDER: FIRST SECOND THIRD

STATIONS USED: NGS (USC & GS) STATE COUNTY OTHER STATION _____ STATION _____

ZONE _____ ELEVATION _____ NORTHINGS (Y) _____ EASTINGS (X) _____

SKETCH: (Include reference tie or witness points, remarks and topo of area)

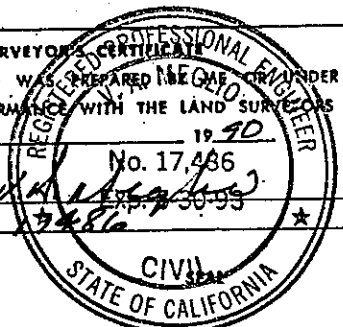


SURVEYOR'S CERTIFICATE

THIS CORNER RECORD WAS PREPARED UNDER MY DIRECTION IN CONFORMANCE WITH THE LAND SURVEYORS ACT ON 11-26 1990

SIGNED: [Signature] No. 17,486 Exp. 3-31-93

R.C.E. No. 17486



COUNTY SURVEYOR'S CERTIFICATE

THE CORNER RECORD WAS RECEIVED AND EXAMINED AND FILED 11-26 1990

BY: [Signature] TITLE: CLERK

DOCUMENT No. _____

STATEMENT ON BACK OF SHEET _____

