

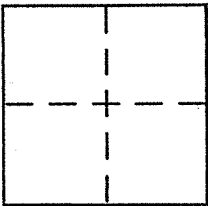
CORNER RECORD

Document Number _____

City of Vicinity Inverness

County of MARIN, California

Brief Legal Description Parcels 2 & 3, 2003-M-167; Marin County Recorder



CORNER TYPE

Government Corner Control
 Meander Property
 Rancho Other
 Date of Survey _____

COORDINATES (Optional)

N. _____
 E. _____
 Zone _____ NAD27 NAD83
 NAD83 Epoch _____
 Elev. _____
 Vert. Datum: NGVD29 NAVD88
 Meas. Units: Metric Imperial

Corner - Left as found Found and tagged Established Reestablished Rebuilt

Identification and type of corner found: Evidence used to identify or procedure used to establish or reestablish the corner:

AS SHOWN UPON REVERSE SIDE

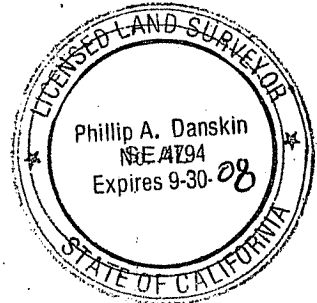
A description of the physical condition of the monument as found and as set or reset:

AS SHOWN UPON REVERSE SIDE

SURVEYOR'S STATEMENT

This Corner Record was prepared by me or under my direction in conformance with
 the Land Surveyor's Act on 13 August 2007

Signed [Signature] PLS or R.C.E. No. PLS 4794



COUNTY SURVEYOR'S STATEMENT

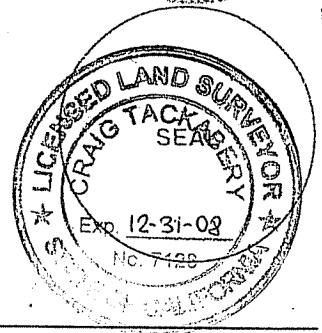
This Corner Record was received AUGUST 27, 2007

and examined and filed SEPTEMBER 19, 2007

Signed [Signature] PLS or R.C.E. No. 7128

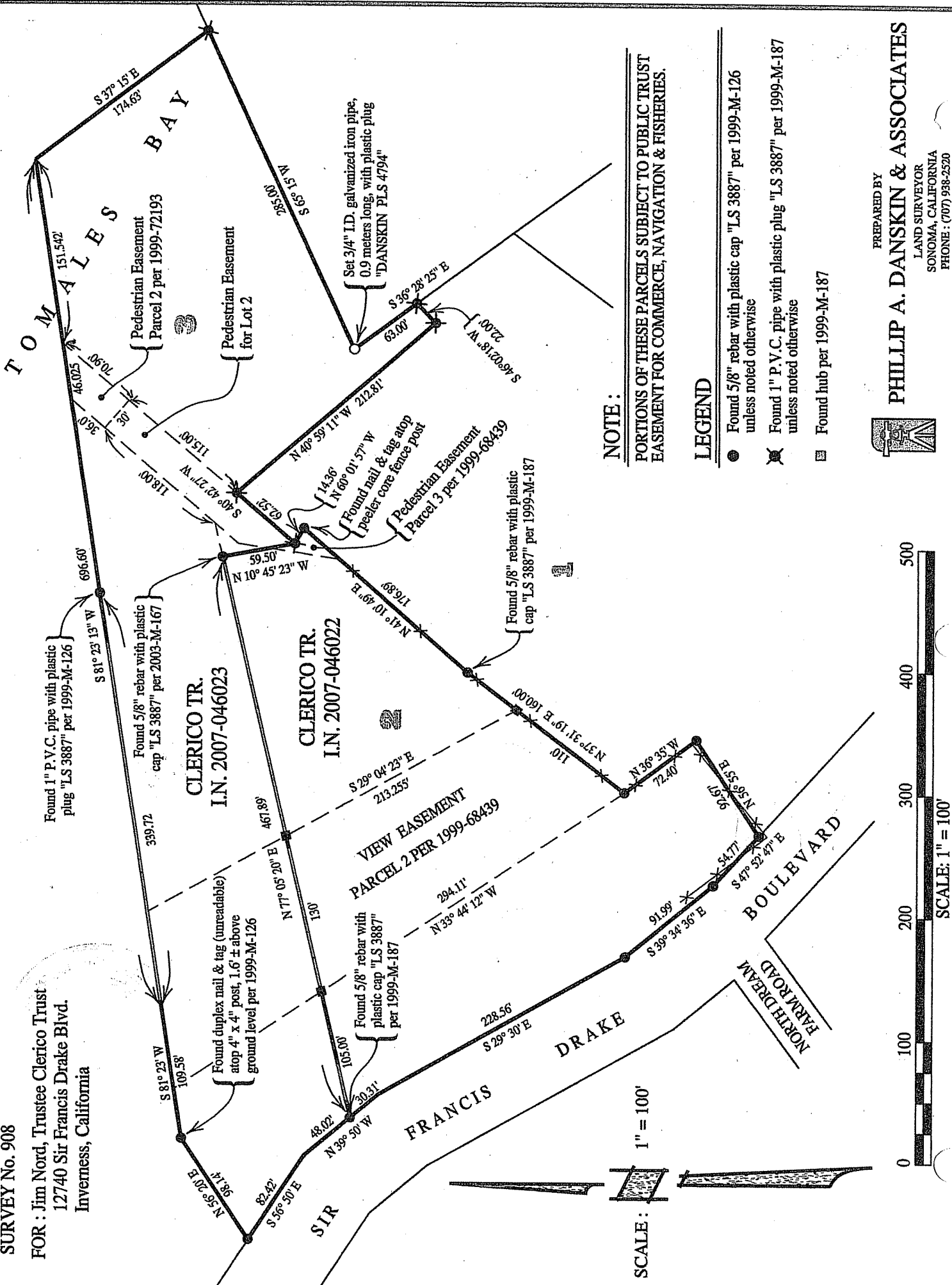
Title COUNTY SURVEYOR

County Surveyor's Comment _____



SURVEY No. 908

FOR : Jim Nord, Trustee Clerico Trust
12740 Sir Francis Drake Blvd.
Inverness, California



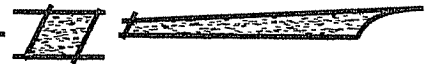
NOTE :

PORTIONS OF THESE PARCELS SUBJECT TO PUBLIC TRUST EASEMENT FOR COMMERCE, NAVIGATION & FISHERIES.

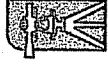
LEGEND

- Found 5/8" rebar with plastic cap "LS 3887" per 1999-M-126 unless noted otherwise
- ✕ Found 1" P.V.C. pipe with plastic plug "LS 3887" per 1999-M-187 unless noted otherwise
- ▣ Found hub per 1999-M-187

SCALE : 1" = 100'



SCALE: 1" = 100'



PREPARED BY
PHILLIP A. DANSKIN & ASSOCIATES
LAND SURVEYOR
SONOMA, CALIFORNIA
PHONE : (707) 938-2520