

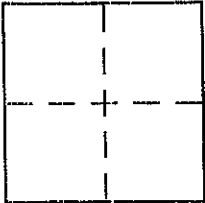
CORNER RECORD

Document Number 114-040-70 & 71

City of INVERNESS

County of MARIN, California

Brief Legal Description LAND AS DEPICTED UPON 23 05 89



CORNER TYPE

Government Corner Control
Meander Property
Rancho Other
Date of Survey FEB. 20, 2003

COORDINATES (Optional)

N. _____
E. _____
Zone _____ NAD27 NAD83
NAD83 Epoch _____
Elev. _____
Vert. Datum: NGVD29 NAVD88
Meas. Units: Metric Imperial

Corner - Left as found Found and tagged Established Reestablished Rebuilt

Identification and type of corner found: Evidence used to identify or procedure used to establish or reestablish the corner:

REESTABLISH THE NORTHWESTERLY CORNER OF 23 05 89 FROM FOUND POINTS AS DEPICTED UPON SAID REFERRED SURVEY. Refer to sketch on reverse side for details.

A description of the physical condition of the monument as found and as set or reset:

set 1/2" rebar with PLS CAP 5379 driven flush with surrounding grade

SURVEYOR'S STATEMENT

This Corner Record was prepared by me or under my direction in conformance with

the Land Surveyor's Act on February 21 2003

Signed Douglas J. Scranton P.L.S or R.C.E. No. PLS 5379



COUNTY SURVEYOR'S STATEMENT

This Corner Record was received FEBRUARY 24, 2003

and examined and filed FEBRUARY 26, 2003

Signed Cey P.L.S or R.C.E. No. 7128

Title DEPUTY



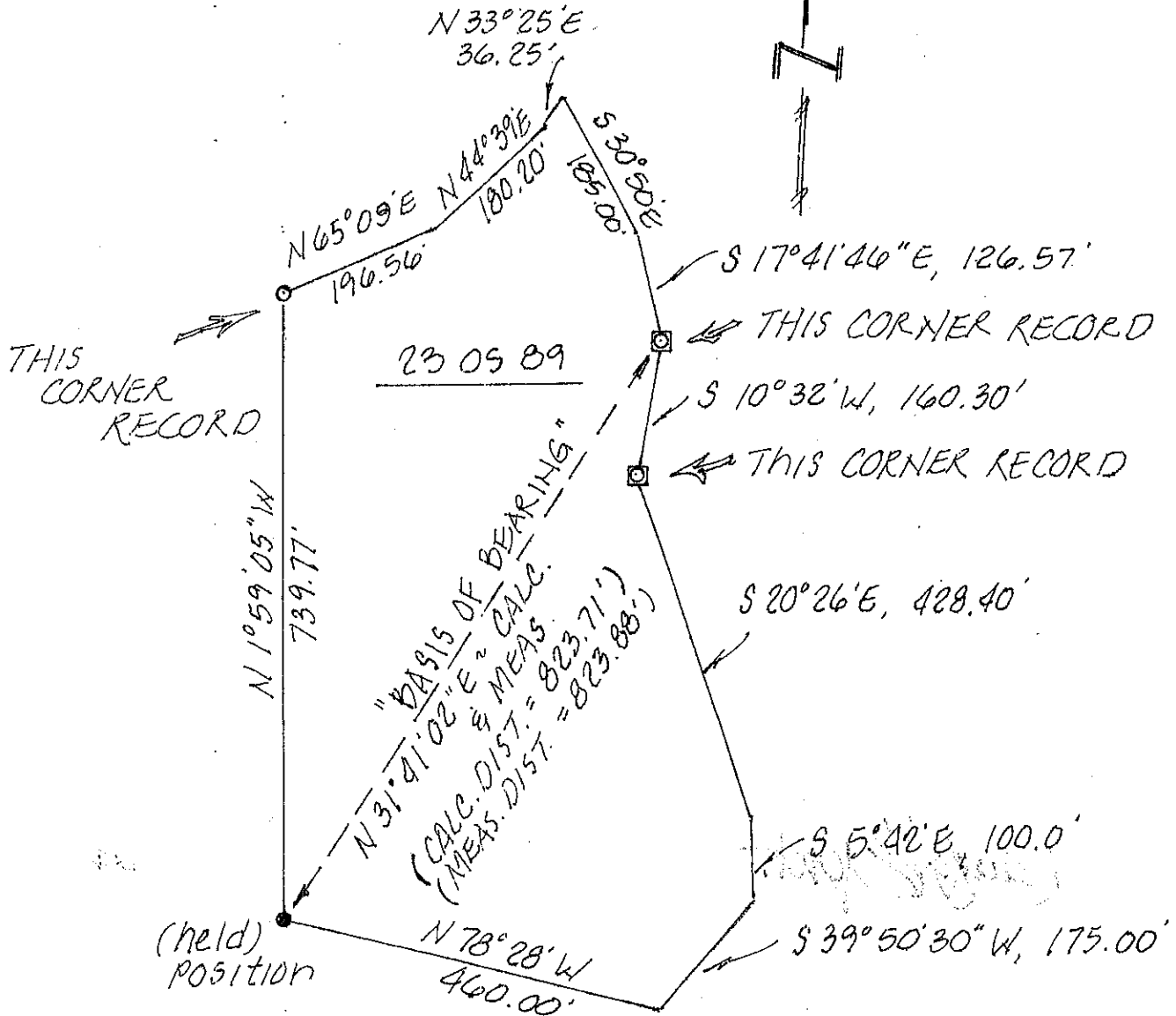
County Surveyor's Comment _____

Prepared by Douglas J. Scranton, State of California, Licensed Land Surveyor No. 5379

NOTE:

ALL DISTANCES GIVEN IN FEET & DECIMALS THEREOF

MAP SCALE 1" = 200'



LEGEND

- 3/4" IRON PIPE / RCE 18221 set per 23 05 89
 - set 1/2" rebar / PLS CAP 5379
 - ◻ found deteriorated hub of 23 05 89
reset with 1/2" rebar / PLS CAP 5379
- (easements are not shown)