

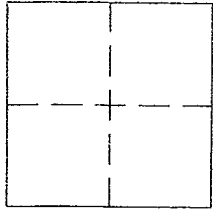
CORNER RECORD

Document Number APN 112-340-15

City of INVERNESS

County of MARIN, California

Brief Legal Description 0 MIWOK WAY, INVERNESS, LANDS OF PROKUPEK



CORNER TYPE

Government Corner  Control   
Meander  Property   
Rancho  Other   
Date of Survey JANUARY 27, 2016

COORDINATES (Optional)

N. \_\_\_\_\_  
E. \_\_\_\_\_  
Zone \_\_\_\_\_ NAD27  NAD83   
NAD83 Epoch \_\_\_\_\_  
Elev. \_\_\_\_\_  
Vert. Datum: NGVD29  NAVD88   
Meas. Units: Metric  Imperial

Corner - Left as found  Found and tagged  Established  Reestablished  Rebuilt

Identification and type of corner found: Evidence used to identify or procedure used to establish or reestablish the corner:  
FOUND MONUMENTS AS SHOWN ON 29 OS 49 AND ON REVERSE

A description of the physical condition of the monument as found and as set or reset:  
SET REBAR AND CAPS, PLS 5296 AS SHOWN ON REVERSE

SURVEYOR'S STATEMENT

This Corner record was prepared by me or under my direction in conformance with the Land Surveyor's Act on MARCH, 13, 2016

Signed [Signature] P.L.S. or R.C.E. No. PLS 5296



COUNTY SURVEYOR'S STATEMENT

This Corner Record was received JUNE 30, 2016

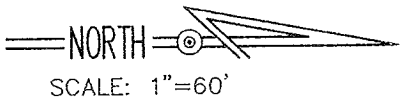
and examined and filed SEPTEMBER 27<sup>th</sup> 2016

Signed [Signature] P.L.S. or R.C.E. No. 7821

Title County Surveyor

County Surveyor's Comment \_\_\_\_\_

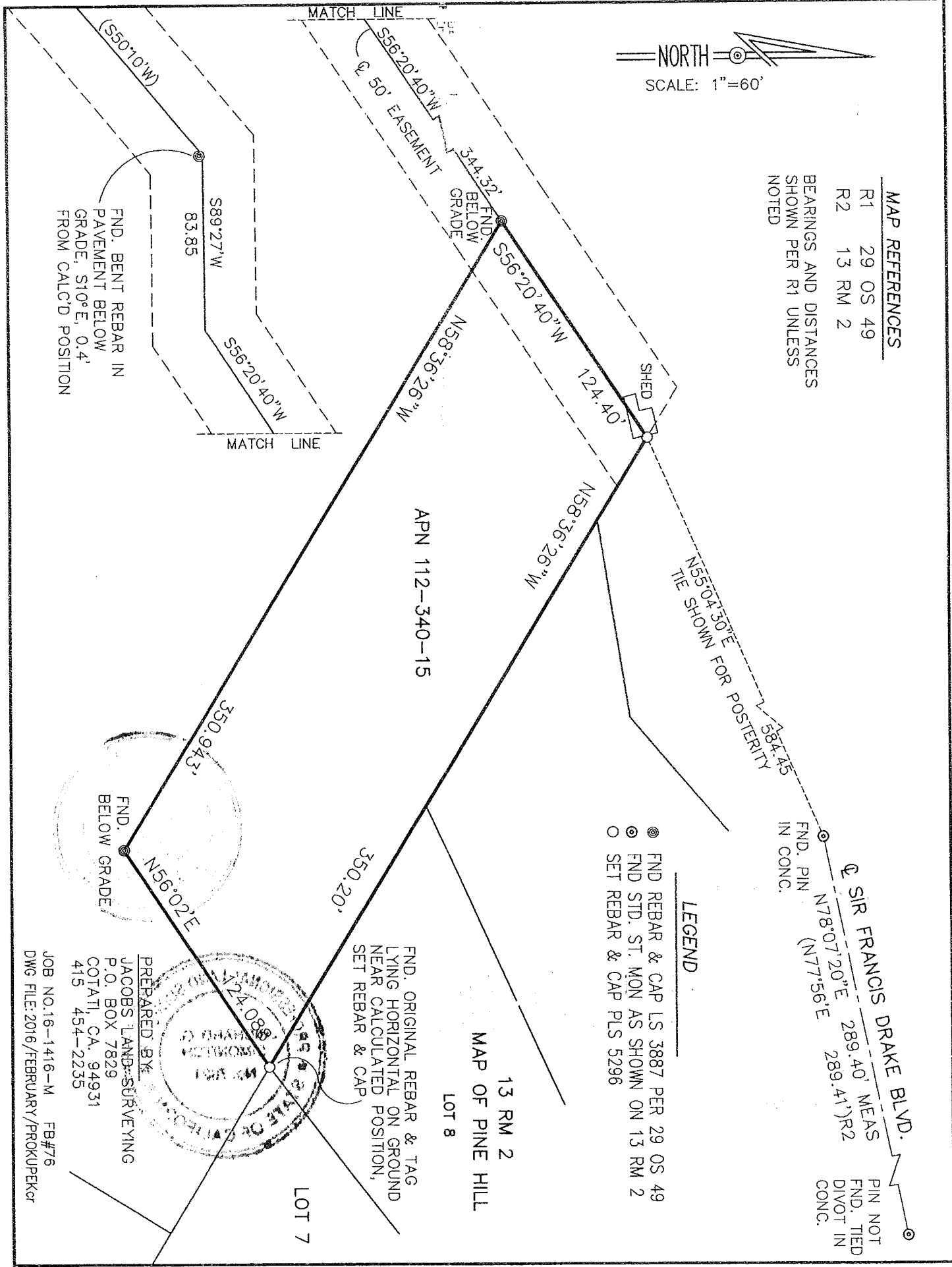




**MAP REFERENCES**

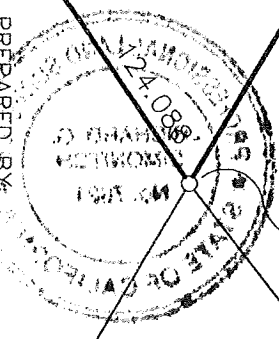
R1	29 OS 49
R2	13 RM 2

BEARINGS AND DISTANCES SHOWN PER R1 UNLESS NOTED



- LEGEND**
- ⊙ FND REBAR & CAP LS 3887 PER 29 OS 49
  - ⊙ FND STD. ST. MON AS SHOWN ON 13 RM 2
  - SET REBAR & CAP PLS 5296

FND. ORIGINAL REBAR & TAG LYING HORIZONTAL ON GROUND NEAR CALCULATED POSITION, SET REBAR & CAP



PREPARED BY:  
JACOBS LAND SURVEYING  
P.O. BOX 7829  
COTATI, CA, 94931  
415 454-2235

JOB NO. 16-1416-M FB#76  
DWG FILE: 2016/FEBRUARY/PROKUPPEKor