



**JERRICO ASSOCIATES**  
 SUITE 27  
 77 MARK DRIVE  
 SAN RAFAEL, CA 94903

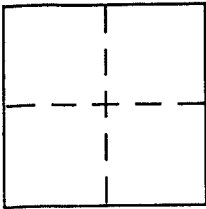
7524

**CORNER RECORD**

Document Number 112-296-15

City of Inverness County of Marin, California

Brief Legal Description Lot 11, Map of Inverness, 1 RM 80



**CORNER TYPE**

Government Corner  Control   
 Meander  Property   
 Rancho  Other   
 Date of Survey August 5, 2004

**COORDINATES (Optional)**

N. \_\_\_\_\_  
 E. \_\_\_\_\_  
 Zone \_\_\_\_\_ NAD27  NAD83   
 NAD83 Epoch \_\_\_\_\_  
 Elev. \_\_\_\_\_  
 Vert. Datum: NGVD29  NAVD88   
 Meas. Units: Metric  Imperial

Corner - Left as found  Found and tagged  Established  Reestablished  Rebuilt

Identification and type of corner found: Evidence used to identify or procedure used to establish or reestablish the corner:  
Found points along Southerly line of Inverness Way  
as shown in 34 Official Surveys 68

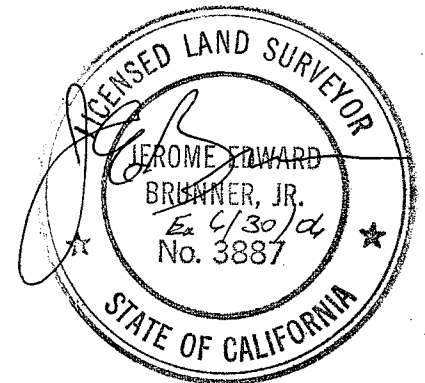
A description of the physical condition of the monument as found and as set or reset: \_\_\_\_\_

A Set rebar and cap LS 3887.

**SURVEYOR'S STATEMENT**

This Corner Record was prepared by me or under my direction in conformance with the Land Surveyor's Act on August 5, 2004

Signed [Signature] P.L.S or R.C.E. No. LS 3887



**COUNTY SURVEYOR'S STATEMENT**

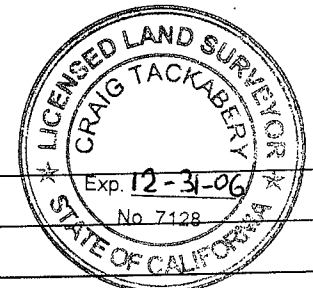
This Corner Record was received AUGUST 24, 2004

and examined and filed SEPTEMBER 20, 2004

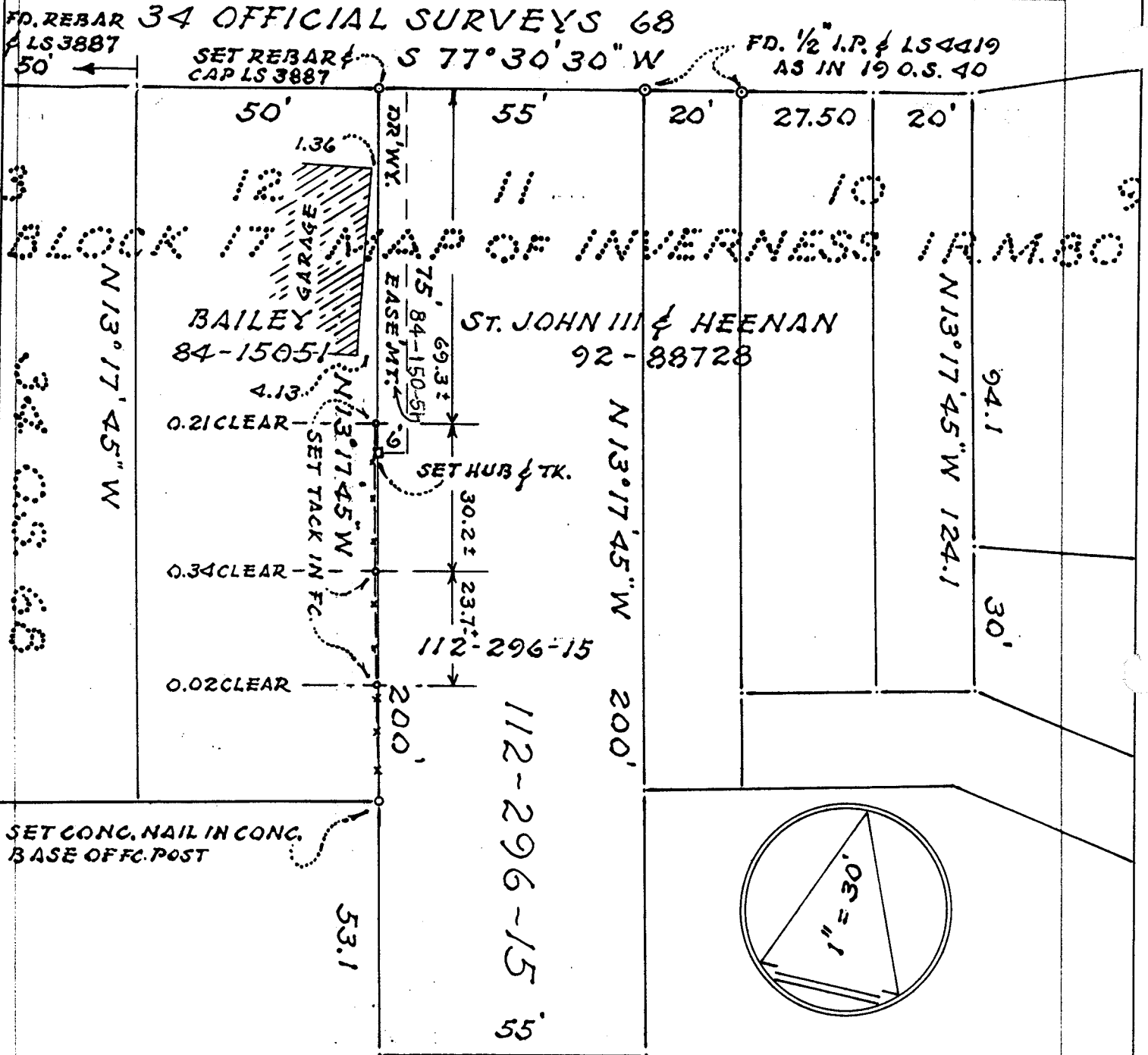
Signed [Signature] P.L.S or R.C.E. No. 7128

Title COUNTY SURVEYOR

County Surveyor's Comment \_\_\_\_\_



# INVERNESS WAY



**SURVEY PTN. W'LY LINE**  
**A.P. 112-296-15**  
**INVERNESS CALIFORNIA**

**AUGUST 2004**  
**JERRICO ASSOCIATES 77 MARK DR., SAN RAFAEL, CA.**

S-7524