



JERRICO ASSOCIATES
 SUITE 27
 77 MARK DRIVE
 SAN RAFAEL, CA 94903

A.P. # 112-295-21

6738

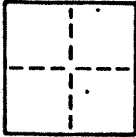
CORNER RECORD

1/1

COUNTY OF Marin T. _____ R. _____ MERIDIAN _____ CALIFORNIA

CORNER TYPE: GOVT. CORNER MEANDER RANCHO CONTROL OTHER

CORNER IDENTIFICATION — DATE OF VISIT _____ 19__



CORNER — LEFT AS FOUND FOUND AND TAGGED REESTABLISHED OBLITERATED CORNER REBUILT

PHYSICAL DESCRIPTION OF CORNER FOUND; EVIDENCE AND METHOD USED TO IDENTIFY OR REESTABLISH

Points found are per. 10 O.S. 61

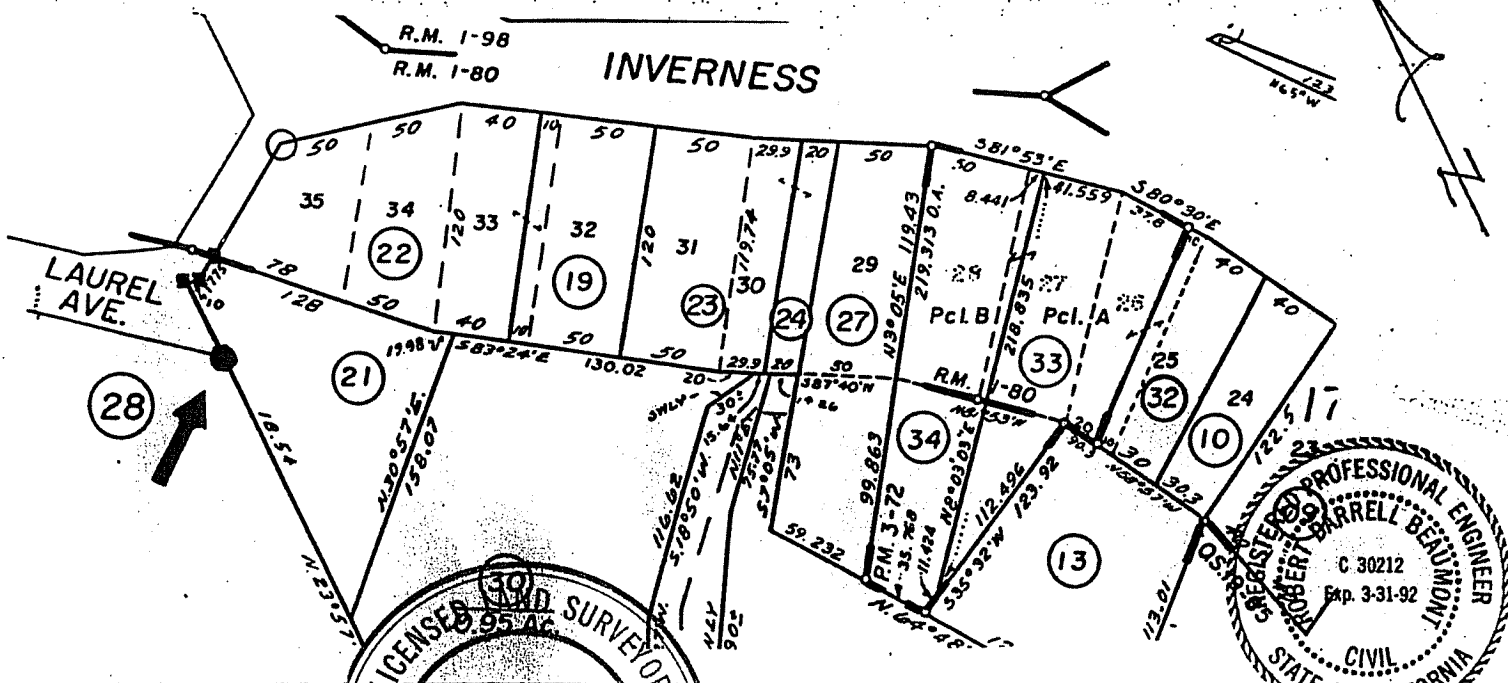
- boat spike
- 2"x 2" redwood hub

PHYSICAL DESCRIPTION OF MONUMENTS, REBUILT OR PERPETUATED

- Set rebar and cap I.S. 3887

CALIFORNIA COORDINATE SYSTEM ORDER: FIRST SECOND THIRD
 STATIONS USED: NGS (USC & GS) STATE COUNTY OTHER STATION _____ STATION _____
 ZONE _____ ELEVATION _____ NORTHINGS (Y) _____ EASTINGS (X) _____

SKETCH: (Include reference tie or witness points, remarks and topo of area)



SURVEYOR'S CERTIFICATE
 THIS CORNER RECORD WAS PREPARED BY ME OR UNDER MY DIRECTION IN CONFORMANCE WITH THE LAND SURVEYORS ACT ON Apr 11 1988
 No. 3887

SIGNED: _____
 L.S. or R.C.E. No.: _____

COUNTY SURVEYOR'S CERTIFICATE
 THE CORNER RECORD WAS RECEIVED 5/24 1988
 AND EXAMINED AND FILED 5/25 1988
 BY: _____
 TITLE: _____

DOCUMENT No. _____

STATEMENT ON BACK OF SHEET