

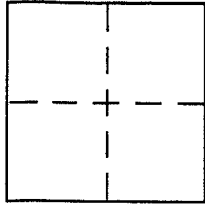
CORNER RECORD

VICINITY City of INVERNESS

Document Number A.P.N.'S 112-254-02,03

County of MARIN, California

Brief Legal Description LOT 3 & PORTIONS OF LOTS 2 & 4, BLK. 26 PER I.R.M. 108



CORNER TYPE

Government Corner Control
Meander Property
Rancho Other
Date of Survey 10-13-05

COORDINATES (Optional)

N. _____
E. _____
Zone _____ NAD27 NAD83
NAD83 Epoch _____
Elev. _____
Vert. Datum: NGVD29 NAVD88
Meas. Units: Metric Imperial

Corner - Left as found Found and tagged Established Reestablished Rebuilt

Identification and type of corner found: Evidence used to identify or procedure used to establish or reestablish the corner:

=SEE OVER=

A description of the physical condition of the monument as found and as set or reset:

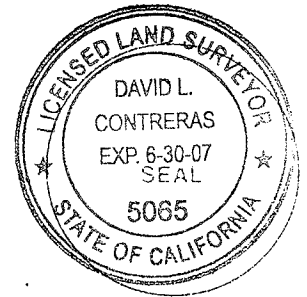
=SEE OVER=

SURVEYOR'S STATEMENT

This Corner Record was prepared by me or under my direction in conformance with

the Land Surveyor's Act on 10-17 2005

Signed David Contreras P.L.S. or R.C.E. No. 5065



COUNTY SURVEYOR'S STATEMENT

This Corner Record was received OCTOBER 18, 2005

and examined and filed NOVEMBER 17, 2005

Signed _____ P.L.S. or R.C.E. No. 7128

Title COUNTY SURVEYOR



County Surveyor's Comment _____

LAUREL VIEW WAY

MESA WAY

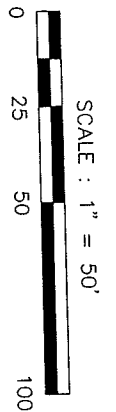
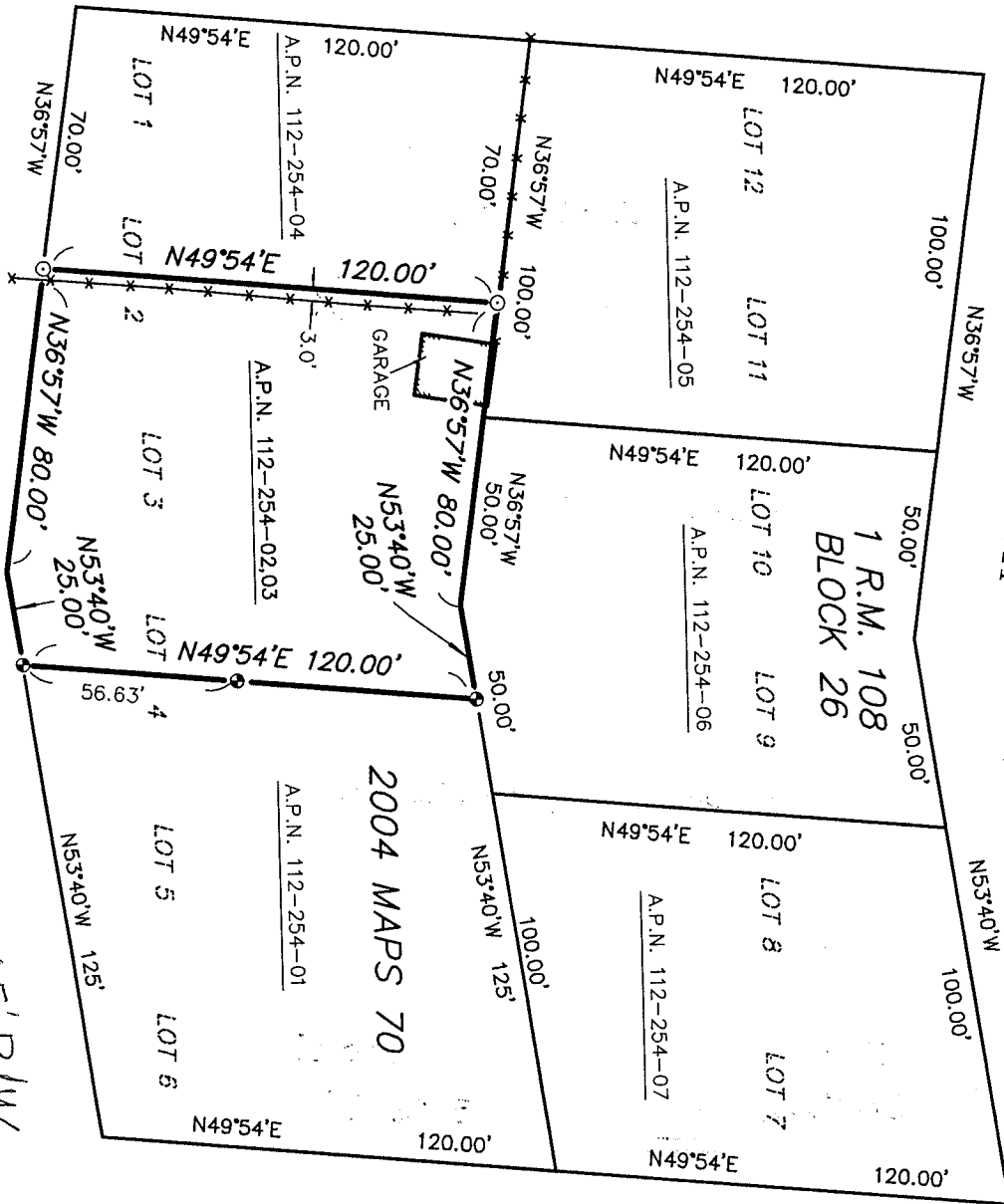
BAY VIEW WAY

EDGEMONT WAY

WAY 45' R/W

VOORHIES SURVEY 861
& 10 O.S. 10

VOORHIES SURVEY 868



LEGEND

- = FOUND 1/2" REBAR & CAP, L.S. 5065
- = SET 1/2" REBAR & PLASTIC CAP, LS 5065
- *-x- = FENCE
- A.P.N. = ASSESSOR'S PARCEL NUMBER
- * = MARIN COUNTY RECORDS

