



**JERRICO ASSOCIATES**  
 SUITE 27  
 77 MARK DRIVE  
 SAN RAFAEL, CA 94903

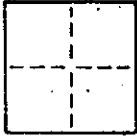
A.P. # 112-234-22

6691

**CORNER RECORD**

1/6

COUNTY OF Marin T. \_\_\_\_\_ R. \_\_\_\_\_ MERIDIAN CALIFORNIA  
 CORNER TYPE: GOVT. CORNER  MEANDER  RANCHO  CONTROL  OTHER   
 CORNER IDENTIFICATION — DATE OF VISIT \_\_\_\_\_ 19\_\_



CORNER — LEFT AS FOUND  FOUND AND TAGGED  REESTABLISHED OBLITERATED CORNER  REBUILT

PHYSICAL DESCRIPTION OF CORNER FOUND; EVIDENCE AND METHOD USED TO IDENTIFY OR REESTABLISH

County monument (RR Spike) control line on Cameron Street per. 18 O.S. 88 controls northerly side of street.

(Ref: 1889 Bush map of Inverness)

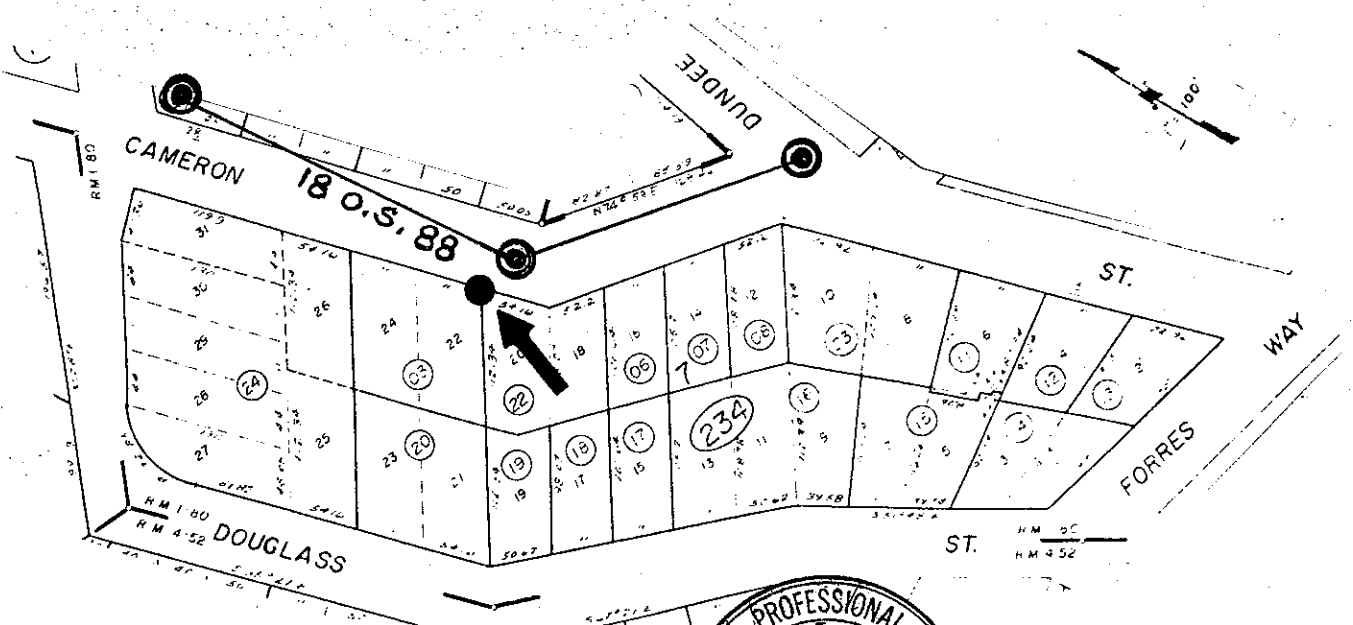
Lot 18 and 20, Block 7, Map of Inverness 1 R.M. 80

PHYSICAL DESCRIPTION OF MONUMENTS REBUILT OR PERPETUATED

Set rebar and cap L.S. 3887

CALIFORNIA COORDINATE SYSTEM ORDER: FIRST  SECOND  THIRD   
 STATIONS USED: NGS (USC & GS)  STATE  COUNTY  OTHER  STATION \_\_\_\_\_ STATION \_\_\_\_\_  
 ZONE \_\_\_\_\_ ELEVATION \_\_\_\_\_ NORTHINGS (Y) \_\_\_\_\_ EASTINGS (X) \_\_\_\_\_

SKETCH: (Include reference tie or witness points, remarks and topo of area)



**REGISTERED LAND SURVEYOR'S CERTIFICATE**  
 THIS CORNER RECORD WAS PREPARED BY ME OR UNDER MY DIRECTION IN CONFORMANCE WITH THE LAND SURVEYORS ACT ON July 16 1987  
 SIGNED: [Signature]  
 L.S. or R.C.E. No.: LS 3887  
 STATE OF CALIFORNIA

**REGISTERED PROFESSIONAL ENGINEER'S CERTIFICATE**  
 No. 18652 COUNTY SURVEYOR'S CERTIFICATE  
 THE CORNER RECORD WAS RECEIVED AND EXAMINED AND FILED 7-20 1987  
 CIVIL [Signature]  
 STATE OF CALIFORNIA  
 DOCUMENT No. \_\_\_\_\_  
 STATEMENT ON BACK OF SHEET YES  NO



**JERRICO ASSOCIATES**  
 SUITE 27  
 77 MARK DRIVE  
 SAN RAFAEL, CA 94903

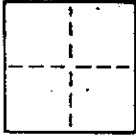
112-234-22

6691

**CORNER RECORD**

2/6

COUNTY OF Marin T. \_\_\_\_\_ R. \_\_\_\_\_ MERIDIAN \_\_\_\_\_ CALIFORNIA  
 CORNER TYPE: GOVT. CORNER  MEANDER  RANCHO  CONTROL  OTHER   
 CORNER IDENTIFICATION — DATE OF VISIT \_\_\_\_\_ 19\_\_\_\_



CORNER — LEFT AS FOUND  FOUND AND TAGGED  REESTABLISHED OBLITERATED CORNER  REBUILT

PHYSICAL DESCRIPTION OF CORNER FOUND; EVIDENCE AND METHOD USED TO IDENTIFY OR REESTABLISH

County monument ( RR Spike) control line on Cameron Street per.  
 18 O.S. 88 controls northerly side of street.

(Ref: 1889 Bush map of Inverness)

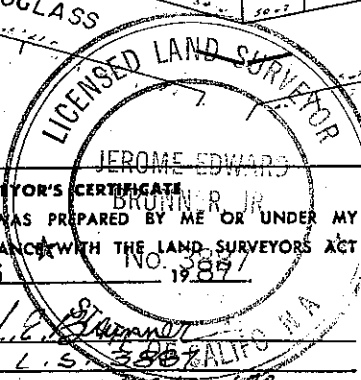
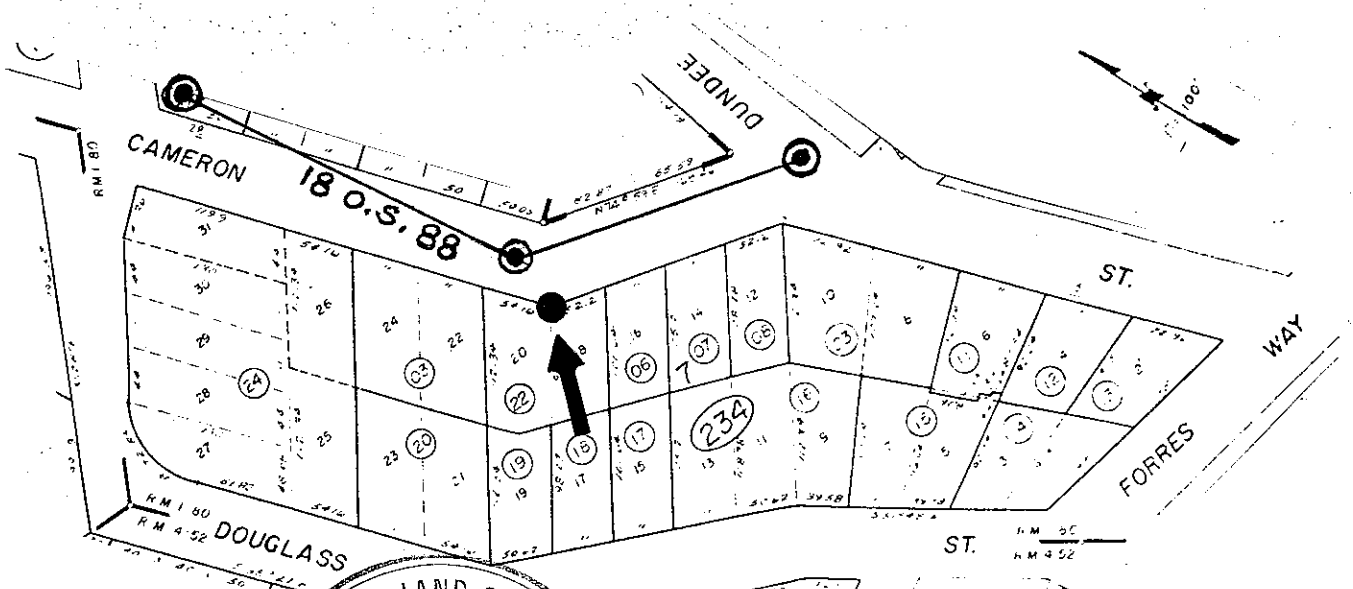
Lot 18 and 20, Block 7, Map of Inverness 1 R.M. 80

PHYSICAL DESCRIPTION OF MONUMENTS. REBUILT OR PERPETUATED

Set nail and tag L.S. 3887 in brick walk

CALIFORNIA COORDINATE SYSTEM ORDER: FIRST  SECOND  THIRD   
 STATIONS USED: NGS (USC & GS)  STATE  COUNTY  OTHER  STATION \_\_\_\_\_ STATION \_\_\_\_\_  
 ZONE \_\_\_\_\_ ELEVATION \_\_\_\_\_ NORTHINGS (Y) \_\_\_\_\_ EASTINGS (X) \_\_\_\_\_

SKETCH: (Include reference tie or witness points, remarks and topo of area)



**SURVEYOR'S CERTIFICATE**  
 THIS CORNER RECORD WAS PREPARED BY ME OR UNDER MY DIRECTION IN CONFORMANCE WITH THE LAND SURVEYORS ACT ON July 16 1987

SIGNED: [Signature]  
 L.S. or R.C.E. No.: L.S. 3887

**COUNTY SURVEYOR'S CERTIFICATE**  
 THIS CORNER RECORD WAS RECEIVED \_\_\_\_\_ 19\_\_\_\_  
 AND EXAMINED AND FILED 2-20 1987

[Signature]  
 CIVIL  
 STATE OF CALIFORNIA  
 DOCUMENT No. \_\_\_\_\_

STATEMENT ON BACK OF SHEET

YES  NO



JERRICO ASSOCIATES

SUITE 27  
77 MARK DRIVE  
SAN RAFAEL, CA 94903

112-234-22

6691

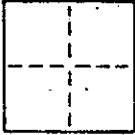
CORNER RECORD

3/6

COUNTY OF Marin T. \_\_\_\_\_ R. \_\_\_\_\_ MERIDIAN \_\_\_\_\_ CALIFORNIA

CORNER TYPE: GOVT. CORNER  MEANDER  RANCHO  CONTROL  OTHER

CORNER IDENTIFICATION — DATE OF VISIT \_\_\_\_\_ 19\_\_\_\_



CORNER — LEFT AS FOUND  FOUND AND TAGGED  REESTABLISHED OBLITERATED CORNER  REBUILT

PHYSICAL DESCRIPTION OF CORNER FOUND; EVIDENCE AND METHOD USED TO IDENTIFY OR REESTABLISH

County monument ( RR Spike) control line on Cameron Street per.  
18 O.S. 88 controls northerly side of street.

(Ref: 1889 Bush map of Inverness)

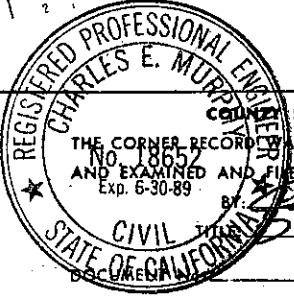
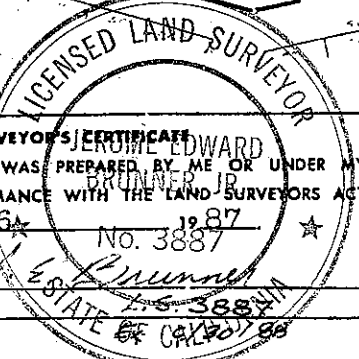
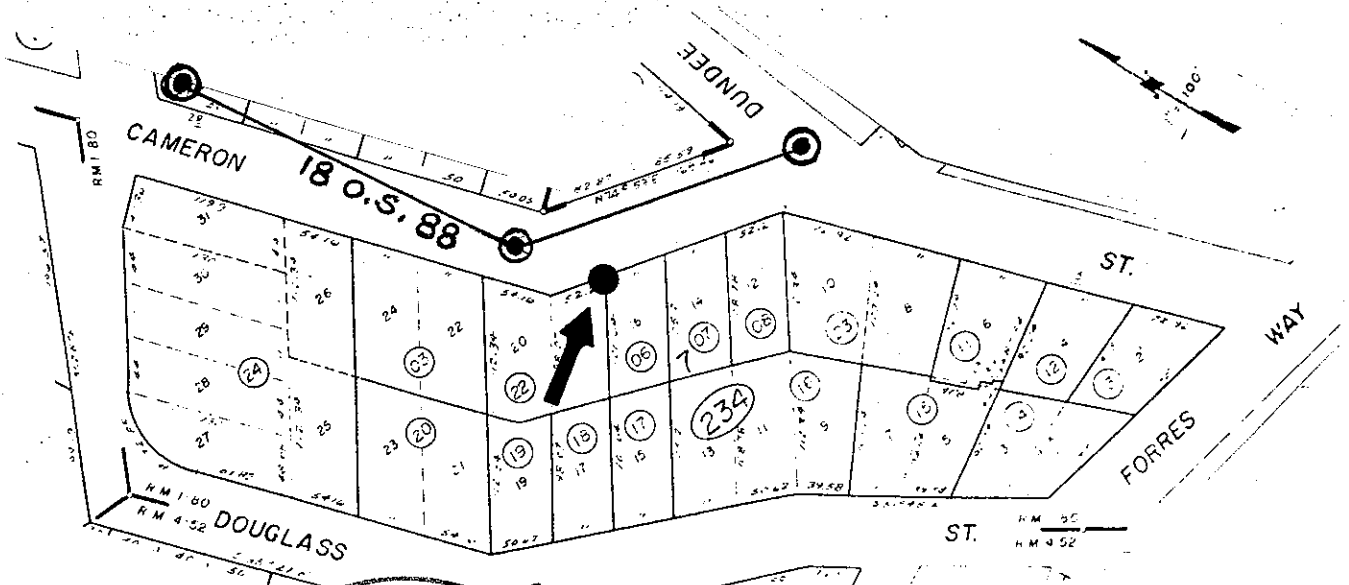
Lot 18 and 20, Block 7, Map of Inverness 1 R.M. 80

PHYSICAL DESCRIPTION OF MONUMENTS REBUILT OR PERPETUATED

Set rebar and cap L.S. 3887

CALIFORNIA COORDINATE SYSTEM ORDER: FIRST  SECOND  THIRD   
STATIONS USED: NGS (USC & GS)  STATE  COUNTY  OTHER  STATION \_\_\_\_\_ STATION \_\_\_\_\_  
ZONE \_\_\_\_\_ ELEVATION \_\_\_\_\_ NORTHINGS (Y) \_\_\_\_\_ EASTINGS (X) \_\_\_\_\_

SKETCH: (Include reference tie or witness points, remarks and topo of area)



SURVEYOR'S CERTIFICATE  
THIS CORNER RECORD WAS PREPARED BY ME OR UNDER MY DIRECTION IN CONFORMANCE WITH THE LAND SURVEYORS ACT ON July 16 1987

SIGNED: \_\_\_\_\_  
L.S. or R.C.E. No.: \_\_\_\_\_

COUNTY SURVEYOR'S CERTIFICATE  
THE CORNER RECORD WAS RECEIVED \_\_\_\_\_ 19\_\_\_\_  
AND EXAMINED AND FILED 7-20 1987  
BY: \_\_\_\_\_  
CIVIL ENGINEER  
Dep. Co. Surveyor

STATEMENT ON BACK OF SHEET

YES  NO



**JERRICO ASSOCIATES**  
 SUITE 27  
 77 MARK DRIVE  
 SAN RAFAEL, CA 94903

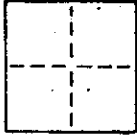
112-234-22

6691

**CORNER RECORD**

4/6

COUNTY OF Marin T. \_\_\_\_\_ R. \_\_\_\_\_ MERIDIAN \_\_\_\_\_ CALIFORNIA  
 CORNER TYPE: GOVT. CORNER  MEANDER  RANCHO  CONTROL  OTHER   
 CORNER IDENTIFICATION — DATE OF VISIT \_\_\_\_\_ 19\_\_\_\_



CORNER — LEFT AS FOUND  FOUND AND TAGGED  REESTABLISHED OBLITERATED CORNER  REBUILT

PHYSICAL DESCRIPTION OF CORNER FOUND; EVIDENCE AND METHOD USED TO IDENTIFY OR REESTABLISH

County monument ( RR Spike) control line on Cameron Street per.  
 18 O.S. 88 controls northerly side of street.

(Ref: 1889 Bush map of Inverness)

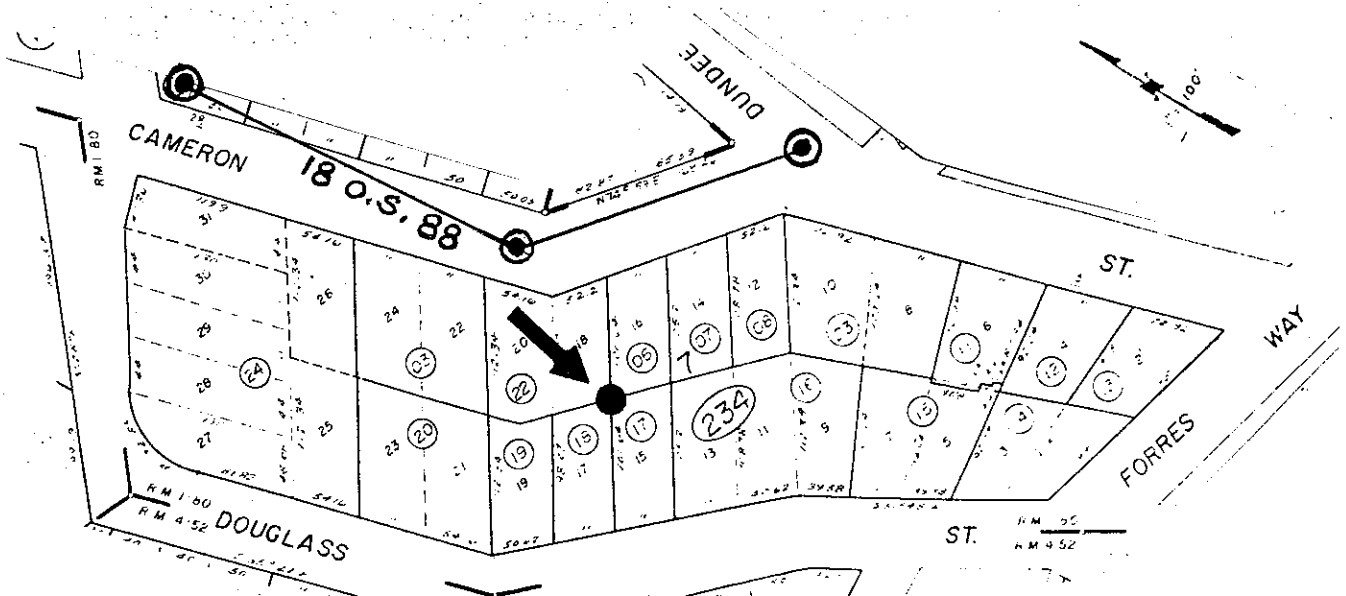
Lot 18 and 20, Block 7, Map of Inverness 1 R.M. 80

PHYSICAL DESCRIPTION OF MONUMENTS. REBUILT OR PERPETUATED

Set rebar and cap L.S. 3887

CALIFORNIA COORDINATE SYSTEM ORDER: FIRST  SECOND  THIRD   
 STATIONS USED: NGS (USC & GS)  STATE  COUNTY  OTHER  STATION \_\_\_\_\_ STATION \_\_\_\_\_  
 ZONE \_\_\_\_\_ ELEVATION \_\_\_\_\_ NORTHINGS (Y) \_\_\_\_\_ EASTINGS (X) \_\_\_\_\_

SKETCH: (Include reference tie or witness points, remarks and topo of area)

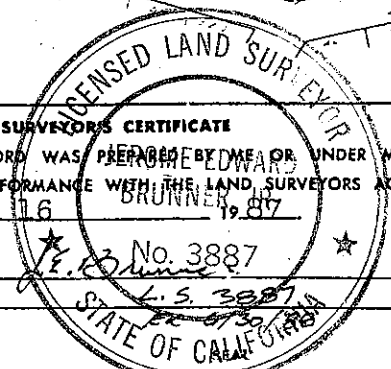


**SURVEYOR'S CERTIFICATE**

THIS CORNER RECORD WAS PREPARED BY ME OR UNDER MY  
 DIRECTION IN CONFORMANCE WITH THE LAND SURVEYORS ACT  
 ON July 16 1987

SIGNED: [Signature]

L.S. or R.C.E. No.:



**SURVEYOR'S CERTIFICATE**

THE CORNER RECORD WAS RECEIVED \_\_\_\_\_ 19\_\_\_\_  
 AND EXAMINED AND FILED 7-20 1987  
 Exp. 6-30-89

BY: [Signature]



STATEMENT ON BACK OF SHEET

YES  NO



JERRICO ASSOCIATES

SUITE 27  
77 MARK DRIVE  
SAN RAFAEL, CA 94903

112-234-22

6691

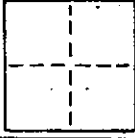
### CORNER RECORD

5/6

COUNTY OF Marin T. \_\_\_\_\_ R. \_\_\_\_\_ MERIDIAN \_\_\_\_\_ CALIFORNIA

CORNER TYPE: GOVT. CORNER  MEANDER  RANCHO  CONTROL  OTHER

CORNER IDENTIFICATION — DATE OF VISIT \_\_\_\_\_ 19\_\_\_\_



CORNER — LEFT AS FOUND  FOUND AND TAGGED  REESTABLISHED OBLITERATED CORNER  REBUILT

PHYSICAL DESCRIPTION OF CORNER FOUND; EVIDENCE AND METHOD USED TO IDENTIFY OR REESTABLISH

County monument ( RR Spike) control line on Cameron Street per.  
18 O.S. 88 controls northerly side of street.

(Ref: 1889 Bush map of Inverness)

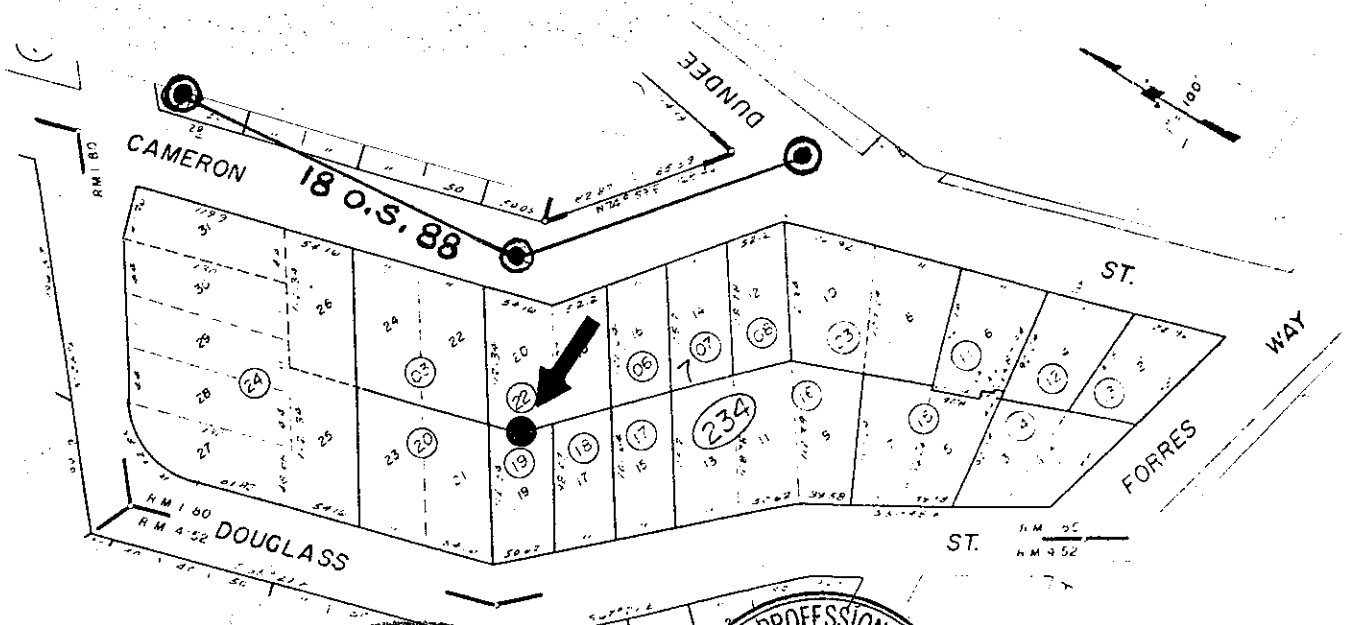
Lot 18 and 20, Block 7, Map of Inverness 1 R.M. 80

PHYSICAL DESCRIPTION OF MONUMENTS REBUILT OR PERPETUATED

Set rebar and cap L.S. 3887

CALIFORNIA COORDINATE SYSTEM ORDER: FIRST  SECOND  THIRD   
STATIONS USED: NGS (USC & GS)  STATE  COUNTY  OTHER  STATION \_\_\_\_\_ STATION \_\_\_\_\_  
ZONE \_\_\_\_\_ ELEVATION \_\_\_\_\_ NORTHINGS (Y) \_\_\_\_\_ EASTINGS (X) \_\_\_\_\_

SKETCH: (Include reference tie or witness points, remarks and topo of area)

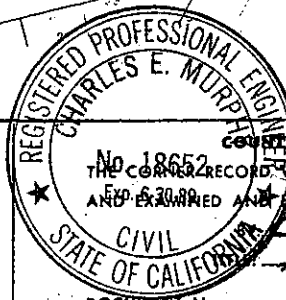
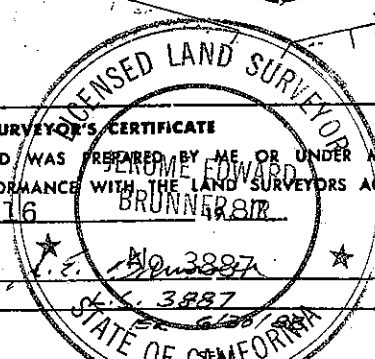


#### SURVEYOR'S CERTIFICATE

THIS CORNER RECORD WAS PREPARED BY ME OR UNDER MY DIRECTION IN CONFORMANCE WITH THE LAND SURVEYORS ACT ON July 16

SIGNED: \_\_\_\_\_

L.S. or R.C.E. No.: \_\_\_\_\_



#### SURVEYOR'S CERTIFICATE

THE CORNER RECORD WAS RECEIVED \_\_\_\_\_ 19\_\_\_\_ AND EXAMINED AND FILED 7-20 1987

DOCUMENT No. \_\_\_\_\_

STATEMENT ON BACK OF SHEET

YES  NO



**JERRICO ASSOCIATES**  
 SUITE 27  
 77 MARK DRIVE  
 SAN RAFAEL, CA 94903

112-234-22

6691

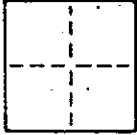
**CORNER RECORD**

6/6

COUNTY OF Marin T. \_\_\_\_\_ R. \_\_\_\_\_ MERIDIAN CALIFORNIA

CORNER TYPE: GOV'T. CORNER  MEANDER  RANCHO  CONTROL  OTHER

CORNER IDENTIFICATION — DATE OF VISIT \_\_\_\_\_ 19\_\_\_\_



CORNER — LEFT AS FOUND  FOUND AND TAGGED  REESTABLISHED OBLITERATED CORNER  REBUILT

PHYSICAL DESCRIPTION OF CORNER FOUND; EVIDENCE AND METHOD USED TO IDENTIFY OR REESTABLISH

County monument ( RR Spike) control line on Cameron Street per.  
 18 O.S. 88 controls northerly side of street.

(Ref: 1889 Bush map of Inverness)

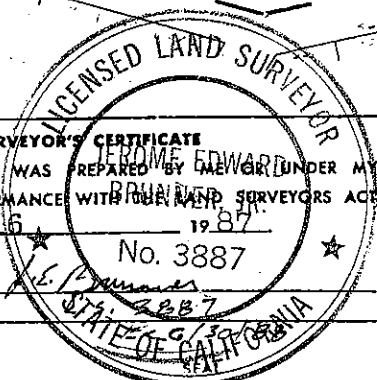
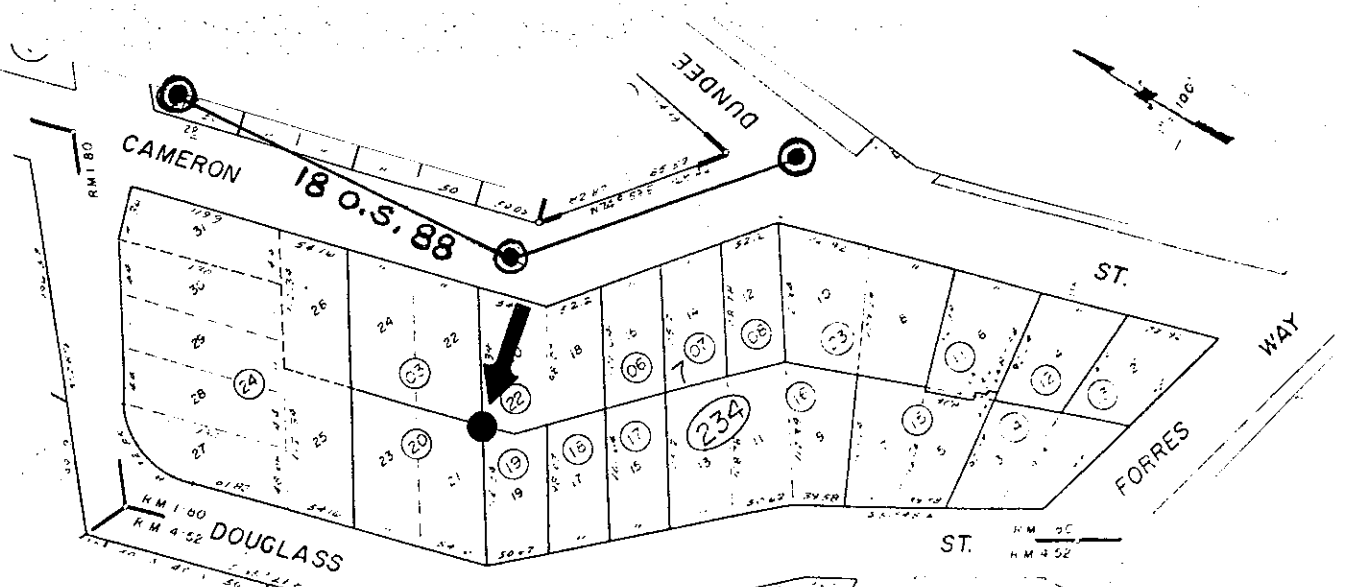
Lot 18 and 20, Block 7, Map of Inverness 1 R.M. 80

PHYSICAL DESCRIPTION OF MONUMENTS REBUILT OR PERPETUATED

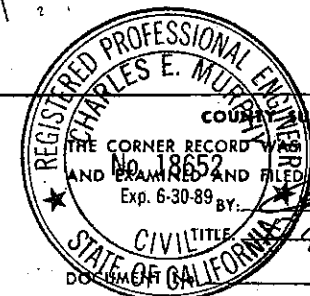
Set rebar and cap L.S. 3887

CALIFORNIA COORDINATE SYSTEM ORDER: FIRST  SECOND  THIRD   
 STATIONS USED: NGS (USC & GS)  STATE  COUNTY  OTHER  STATION \_\_\_\_\_ STATION \_\_\_\_\_  
 ZONE \_\_\_\_\_ ELEVATION \_\_\_\_\_ NORTHINGS (Y) \_\_\_\_\_ EASTINGS (X) \_\_\_\_\_

SKETCH: (Include reference tie or witness points, remarks and topo of area)



**SURVEYOR'S CERTIFICATE**  
 THIS CORNER RECORD WAS PREPARED BY ME OR UNDER MY  
 DIRECTION IN CONFORMANCE WITH THE SURVEYORS ACT  
 ON July 16 1987  
 SIGNED: J. E. Brown  
 L.S. or R.C.E. No.: 3887



**REGISTERED PROFESSIONAL ENGINEER'S CERTIFICATE**  
 THE CORNER RECORD WAS RECEIVED \_\_\_\_\_ 19\_\_\_\_  
 AND EXAMINED AND FILED \_\_\_\_\_ 1987  
 Exp. 6-30-89 BY: Charles E. Murray  
 CIVIL TITLE: Cal. Surv.  
 DOCUMENT NO. \_\_\_\_\_

STATEMENT ON BACK OF SHEET YES  NO