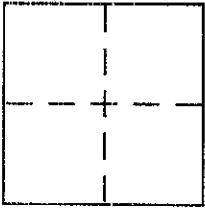


**CORNER RECORD**

Document Number APN 112.201.41  
City of INVERNESS County of MARIN, California

Brief Legal Description PARCEL 3 11 PM 55



**CORNER TYPE**

Government Corner  Control   
Meander  Property   
Rancho  Other   
Date of Survey 12/18/2002

**COORDINATES (Optional)**

N. \_\_\_\_\_  
E. \_\_\_\_\_  
Zone \_\_\_\_\_ NAD27  NAD83   
NAD83 Epoch \_\_\_\_\_  
Elev. \_\_\_\_\_  
Vert. Datum: NGVD29  NAVD88   
Meas. Units: Metric  Imperial

Corner - Left as found  Found and tagged  Established  Reestablished  Rebuilt

Identification and type of corner found: Evidence used to identify or procedure used to establish or reestablish the corner:  
REESTABLISH MISC. CORNERS OF PARCEL 3 (11 PM 55)  
(AS SHOWN ON REVERSE SIDE) FROM EXISTING  
FOUND POINTS OF RECORD UPON SAID 11 PM 55

A description of the physical condition of the monument as found and as set or reset:  
set 1/2" rebar with PLS CAP 5379 AFFIXED  
to top of rebar & driven flush with  
surrounding grade

**SURVEYOR'S STATEMENT**

This Corner Record was prepared by me or under my direction in conformance with  
the Land Surveyor's Act on December 23 2002  
Signed Douglas J. Scranton P.L.S. or R.C.E. No. PLS 5379



**COUNTY SURVEYOR'S STATEMENT**

This Corner Record was received DECEMBER 27, 2002  
and examined and filed JANUARY 2, 2003  
Signed \_\_\_\_\_ P.L.S. or R.C.E. No. 7128  
Title DEPUTY



County Surveyor's Comment \_\_\_\_\_

BY: BAS Olive Ave Novato, CA  
PREPARED  
DJ SCRANTON SURVEYING

"BASIS OF BEARING"

Pt. A TO Pt. B S 80° 37' 43" W, 385.13' CALC.  
 (385.20', MEAS.)

Point "B"

FOUND REE 11181  
 PER 11 PM 55

CRISTINA 1181 PILES  
 PER 11 PILES

"BASIS OF BEARING"

N 69° 15' E  
 77.00'

S 59° 30' E  
 77.00'

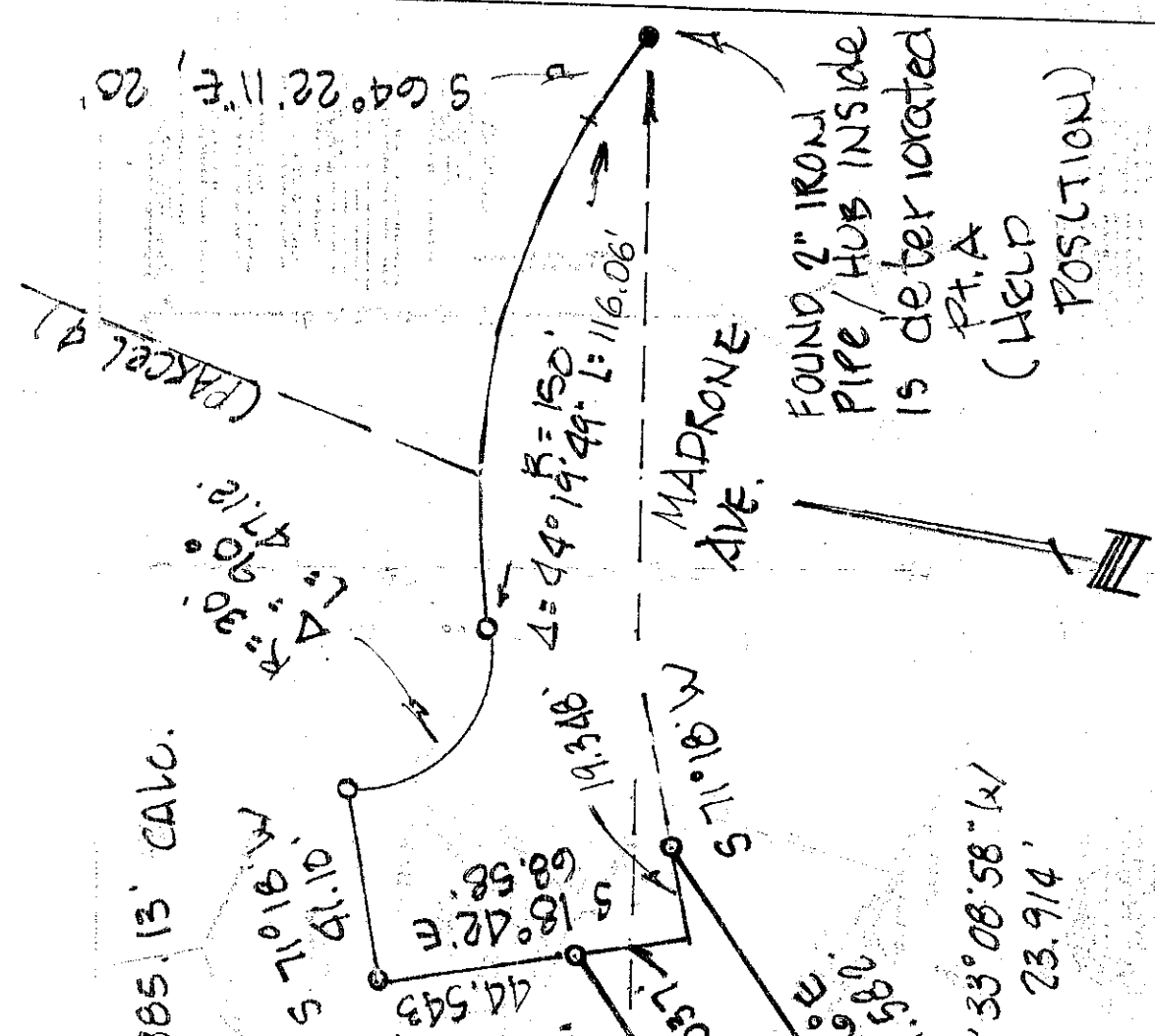
(N 69° 15' E)

(S 59° 30' E)

SEE 11 PM 55

LEGEND

o set 1/2" rebar / PLS 5379



FOUND 2" IRON PIPE / HUB INSIDE IS DETEORATED  
 Pt. A (HELP POSITION)

scale 1 inch = forty feet