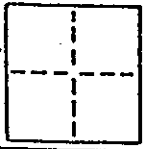


CORNER RECORD

COUNTY OF MARIN T. _____ R. _____ SEC. _____ M. D. B. 8 MERIDIAN CALIFORNIA
CORNER TYPE: GOVT. CORNER MEANDER RANCHO CONTROL OTHER
CORNER IDENTIFICATION — DATE OF VISIT AUGUST 30 1990



AP# 112-200-35

CORNER — LEFT AS FOUND FOUND AND TAGGED REESTABLISHED OBLITERATED CORNER REBUILT

PHYSICAL DESCRIPTION OF CORNER FOUND, EVIDENCE AND METHOD USED TO IDENTIFY OR REESTABLISH

SEE SKETCH BELOW

PHYSICAL DESCRIPTION OF MONUMENTS REBUILT OR PERPETUATED

SET 3/4" IRON PIPE TAGGED L.S. 5103

CALIFORNIA COORDINATE SYSTEM ORDER: FIRST SECOND THIRD
STATIONS USED: NGS (USC & GS) STATE COUNTY OTHER STATION _____
ZONE _____ ELEVATION _____ NORTHINGS (N) _____ EASTINGS (E) _____

SKETCH: (Include reference tie or witness points, remarks and topo of area)

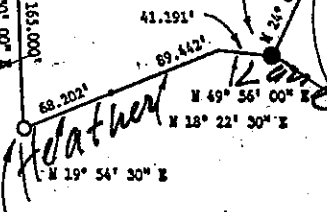
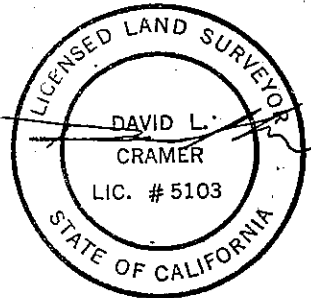
FOUND 5/8" REBAR
TAGGED R.C.E.
11181

3 P.M. 93
PARCEL 4

CORNER REFERENCE:
Southerly Corner Parcel 4
As Shown on Parcel Map Book 3,
Page 93.

Found Jack Stand,
R.C.E. 11181

Found 1" Iron
Pipe Tagged L.S.
2135



Set 3/4" IRON PIPE,
TAGGED L.S. 5103

NOT TO SCALE

SURVEYOR'S CERTIFICATE

THIS CORNER RECORD WAS PREPARED BY ME OR UNDER MY
DIRECTION IN CONFORMANCE WITH THE LAND SURVEYORS ACT
ON SEPTEMBER 12 1990

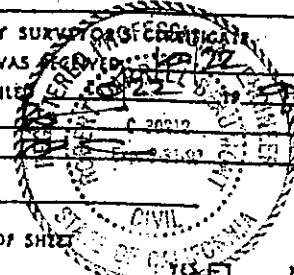
SIGNED: _____
L.S. or R.C.E. No. _____

SEAL

COUNTY SURVEYOR'S CERTIFICATE

THE CORNER RECORD WAS RECEIVED AND EXAMINED AND FILED
BY: _____ C 20012
TITLE: _____

DOCUMENT No. _____
STATEMENT ON BACK OF SHEET



NO