



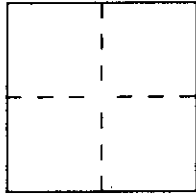
CORNER RECORD

SUITE 27
77 MARK DRIVE
SAN RAFAEL, CA 94903

Document Number 112-173-03,04

1 City of Inverness County of Marin, California,

Brief Legal Description Lot 3, Lot 4 Block 15 Map of Inverness 1 RM 80



CORNER TYPE

Government Corner Control
 Meander Property
 Rancho Other
 Date of Survey Oct. 30, 1997

COORDINATES (Optional)

N. _____
 E. _____
 Zone _____ Datum _____
 Elev. _____

Corner — Left as found Found and tagged Established Reestablished Rebuilt

Identification and type of corner found: Evidence used to identify or procedure used to establish or reestablish the corner:

(A) (C) Found old hub and LS 2535.

(B) Found rebar and LS 3887.

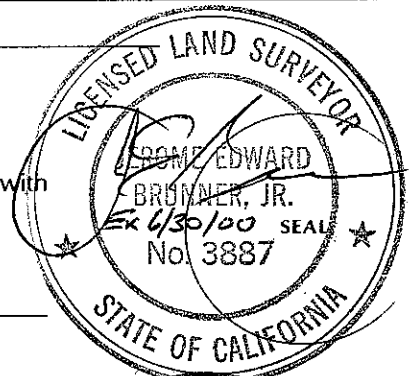
A description of the physical condition of the monument as found and as set or reset:

(D) (E) Set #5 rebar and cap LS 3887.

SURVEYOR'S STATEMENT

This Corner Record was prepared by me or under my direction in conformance with the Land Surveyors' Act on Oct. 30 19 97.

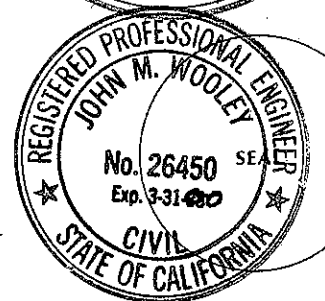
Signed [Signature] L.S. or R.C.E. Number LS 3887



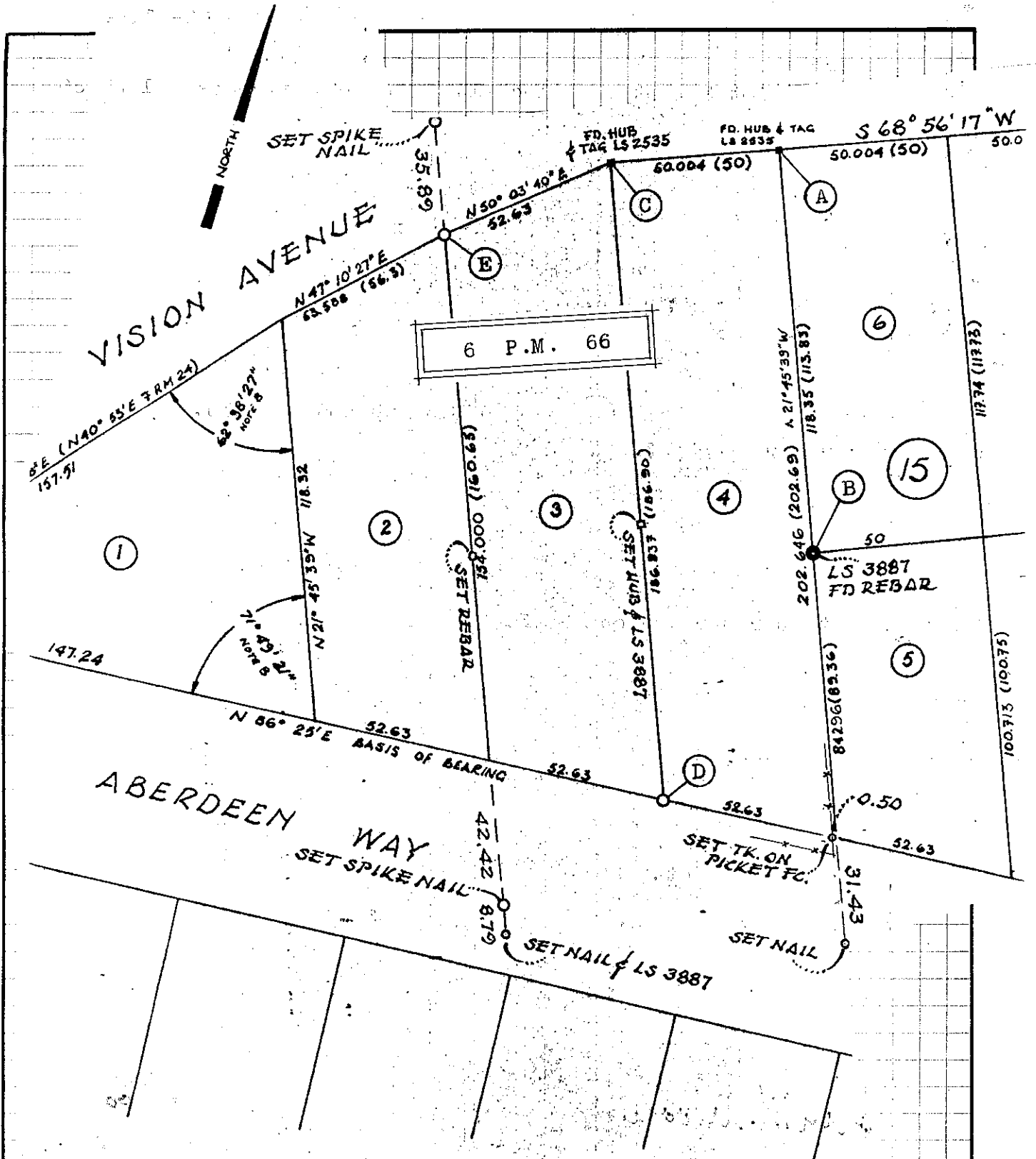
COUNTY SURVEYOR'S STATEMENT

This Corner Record was received November 4 19 97 and examined and filed November 5 19 97.

Signed [Signature] Title Deputy



County Surveyor's Comment _____



DIRECTOR'S CERTIFICATE

LED TO BE IN SUBSTANTIAL CONFORMITY WITH
WERNER VON BOURG LAND DIVISION
 OCTOBER 19TH, 1971 AND MAY
 NO APPROVAL OF ANY ASPECT OF
 DISPOSAL OR WATER SUPPLY IS IMPLIED,
 SPECIFIED.

WERNER VON GUNDELL
 WABIN COUNTY PLANNING DIRECTOR
 BY: E. Ross Parkerson

RECORDER'S CERTIFICATE

FILED THIS 2ND DAY OF DEC, 1971
 AT 11:50 AM IN BOOK 6 Public Works
 AT PAGE 66 SERIAL NUMBER 43336
 FEE \$ 5.00 FOR THE RECORD TO DATE

(Signed) N.T. Giacomini
 COUNTY RECORDER

H. Crumpley
 COUNTY RECORDER

43336