

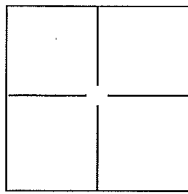
CORNER RECORD

Document Number 112-092-04

Community of Seahaven

County of Marin, California

Brief Legal Description Control Monument - Pine Hill Drive, 2002 RS/67



CORNER TYPE

Government Corner Control
Meander Property
Rancho Other

Date of Survey _____

COORDINATES (Optional)

N. _____
E. _____
Zone _____ NAD27 NAD83
NAD83 Epoch _____
Elev. _____
Vert. Datum: NGVD29 NADV88
Meas. Units: Metric Imperial

Corner - Left as found Found and tagged Established Reestablished Rebuilt

Identification and type of corner found: Evidence used to identify or procedure used to establish or reestablish the corner:

REFERENCED FOUND RAILROAD SPIKES ON PINE HILL DRIVE, AS SHOWN ON 2002RS167 WITH SET NAIL AND SHINER IN PAVEMENT, (SEE ATTACHED SKETCH).

NO ATTEMPT WAS MADE TO DETERMINE THE VALIDITY OF THE MONUMENTS OR THEIR PROPER LOCATIONS IN RELATION TO LEGAL BOUNDARY LINES.

A description of the physical condition of the monument as found and as set or reset: MONUMENTS REESTABLISHED WITH STANDARD MARIN COUNTY SURVEY MONUMENT, AS SHOWN ON UNIFORM STANDARDS OF COUNTY OF MARIN DRAWING No. 300. (SEE ATTACHED SKETCH)

SURVEYOR'S STATEMENT

This Corner Record was prepared by me or under my direction in conformance with the Land Surveyor's Act on JULY 22, 2016.

Signed T. W. Park P.L.S. or R.C.E. No.: 8176



COUNTY SURVEYOR'S STATEMENT

This Corner Record was received JULY 22, 2016 and examined and filed AUGUST 2, 2016.

Signed R. G. Simonitch P.L.S. or R.C.E. No.: 7821

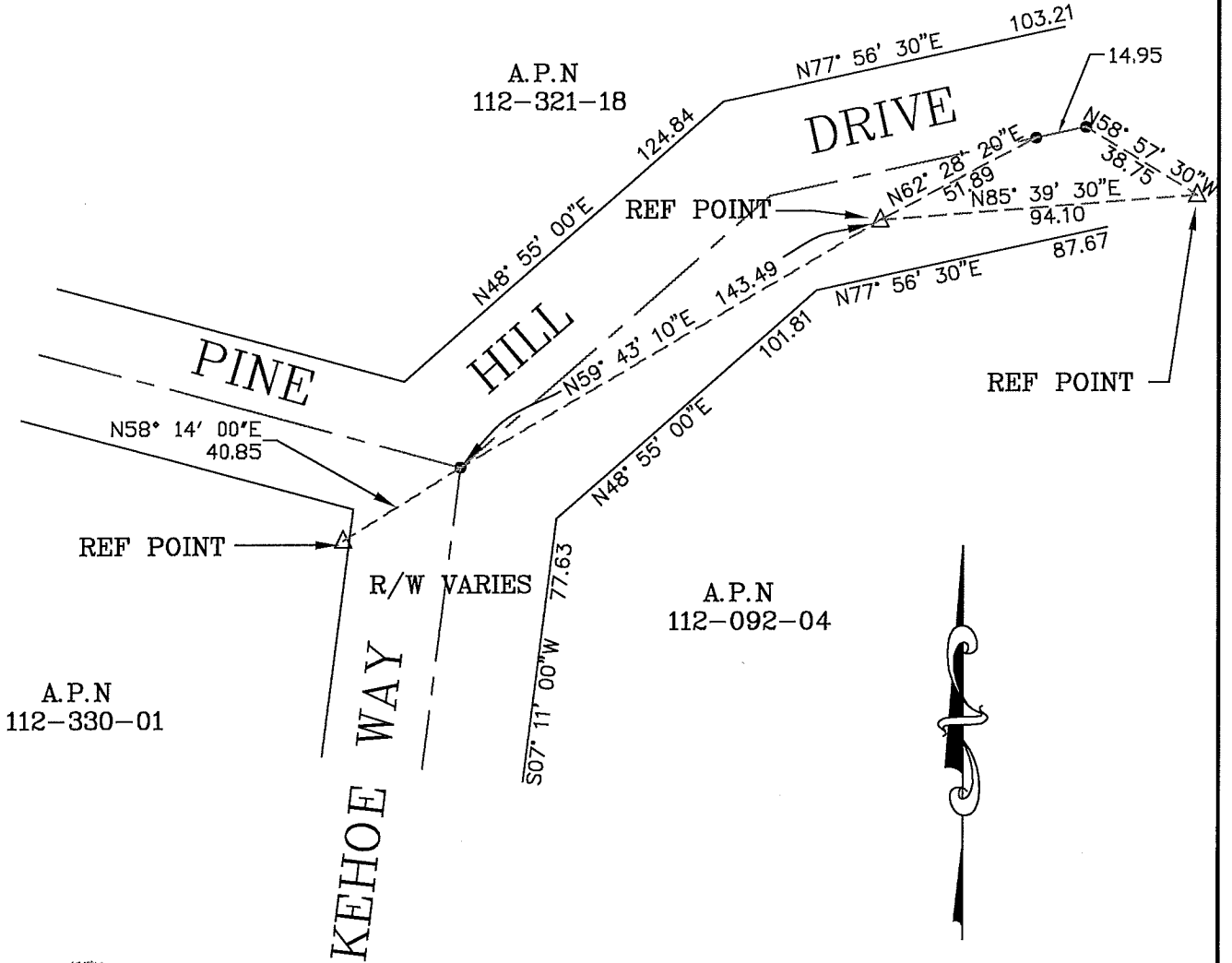
Title County Surveyor

County Surveyor's Comment _____



LEGEND

- FOUND RAILROAD SPIKE, TIED OUT AS SHOWN AND REPLACED WITH STANDARD COUNTY MONUMENT
- △ FOUND NAIL & SHINER



2002 RS 167



2014-004

<p>COUNTY OF MARIN DEPARTMENT OF PUBLIC WORKS SURVEY SECTION</p>	<p>SCALE: 1" = 50'</p>	<p>CORNER RECORD</p>
---	------------------------	-----------------------------