

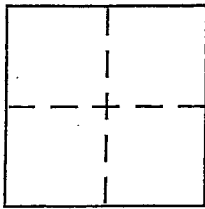
CORNER RECORD

Document Number 112-092-04

City of Inverness

County of MARIN, California

Brief Legal Description Control Monuments - See 2002 MAPS 167



CORNER TYPE

Government Corner Control
Meander Property
Rancho Other
Date of Survey _____

COORDINATES (Optional)

N. _____
E. _____
Zone _____ NAD27 NAD83
NAD83 Epoch _____
Elev. _____
Vert. Datum: NGVD29 NAVD88
Meas. Units: Metric Imperial

Corner - Left as found Found and tagged Established Reestablished Rebuilt

Identification and type of corner found: Evidence used to identify or procedure used to establish or reestablish the corner:
Referenced found railroad spikes on PINE HILL Drive,
per 2002 MAPS 167.
See Back

A description of the physical condition of the monument as found and as set or reset:
See Back

SURVEYOR'S STATEMENT

This Corner Record was prepared by me or under my direction in conformance with the Land Surveyor's Act on May 22 2014

Signed Michael A. Brogan P.L.S or R.C.E. No. LS 5767



COUNTY SURVEYOR'S STATEMENT

This Corner Record was received JUNE 16, 2014

and examined and filed JULY 8th 2014

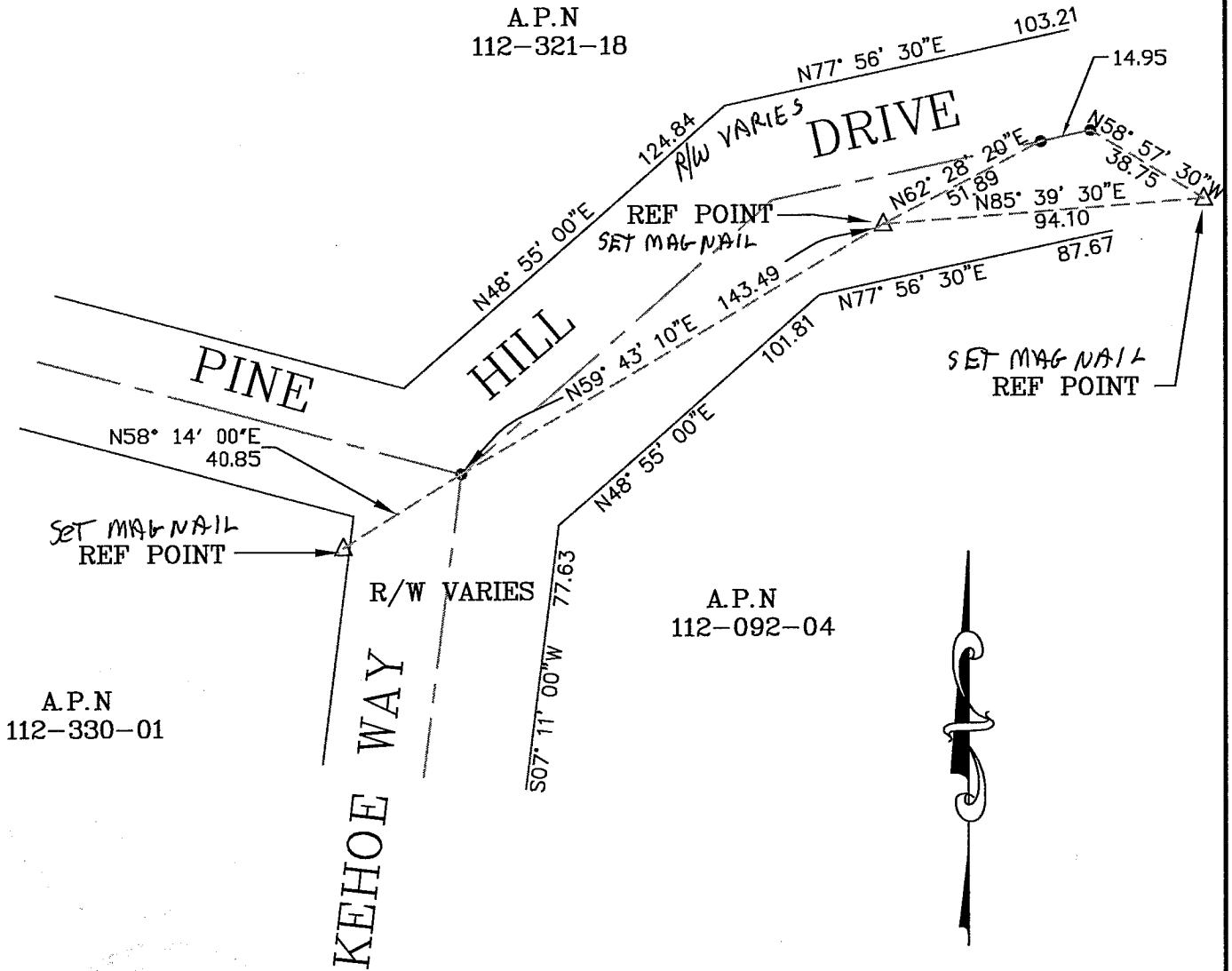
Signed Richard G. Simonitch P.L.S or R.C.E. No. 7821

Title DEPUTY



County Surveyor's Comment _____

● — RAILROAD SPIKE



2002 RS 167



COUNTY OF MARIN DEPARTMENT OF PUBLIC WORKS SURVEY SECTION	SCALE: 1" = 50'	CORNER RECORD
---	-----------------	---------------