



**JERRICO ASSOCIATES**  
 SUITE 27  
 77 MARK DRIVE  
 SAN RAFAEL, CA 94903

A.P. # 112-080-08

6698

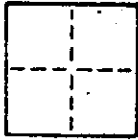
**CORNER RECORD**

1/4

COUNTY OF Marin T. \_\_\_\_\_ R. \_\_\_\_\_ MERIDIAN \_\_\_\_\_ CALIFORNIA

CORNER TYPE: GOVT. CORNER  MEANDER  RANCHO  CONTROL  OTHER

CORNER IDENTIFICATION — DATE OF VISIT \_\_\_\_\_ 19\_\_\_\_



CORNER — LEFT AS FOUND  FOUND AND TAGGED  REESTABLISHED OBLITERATED CORNER  REBUILT

PHYSICAL DESCRIPTION OF CORNER FOUND; EVIDENCE AND METHOD USED TO IDENTIFY OR REESTABLISH

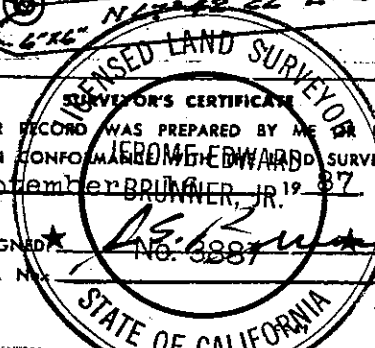
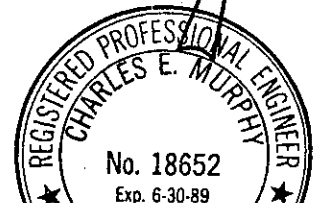
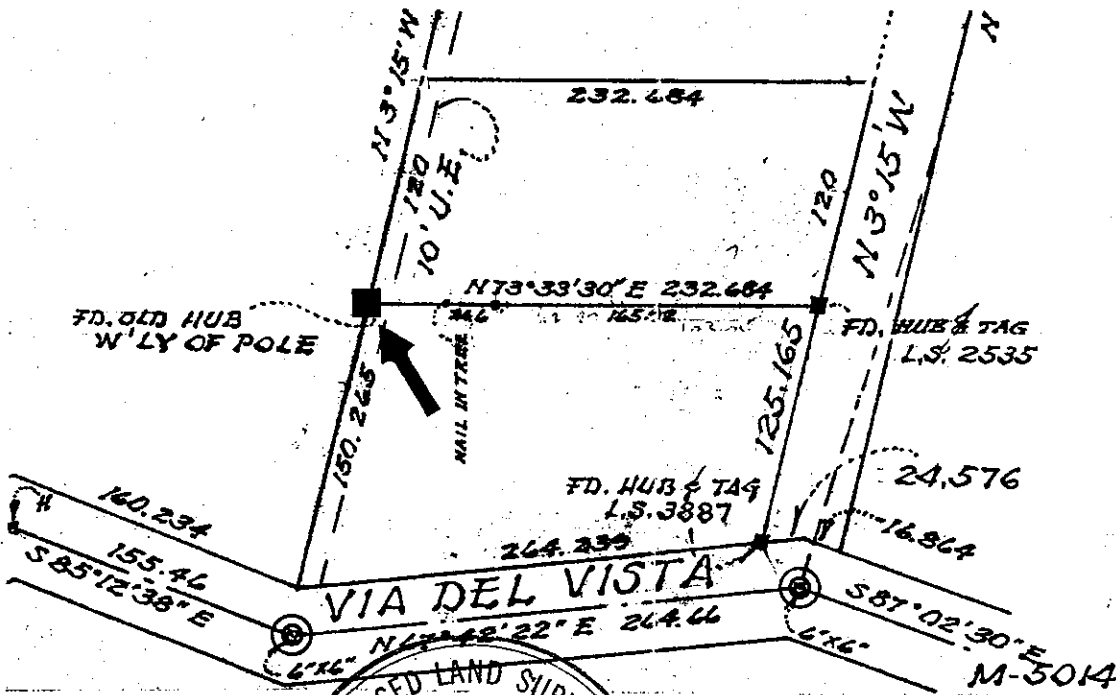
⊙ Found original monuments set for Via Del Vista by Voorhies.  
 6"x 6" w/pin or, 6"x 6" and L.S. 2135

■ Found old hub (below grade, been bopped) left as is. Power pole 7' E'ly

PHYSICAL DESCRIPTION OF MONUMENTS REBUILT OR PERPETUATED

CALIFORNIA COORDINATE SYSTEM ORDER: FIRST  SECOND  THIRD   
 STATIONS USED: NGS (USC & GS)  STATE  COUNTY  OTHER  STATION \_\_\_\_\_ STATION \_\_\_\_\_  
 ZONE \_\_\_\_\_ ELEVATION \_\_\_\_\_ NORTHINGS (Y) \_\_\_\_\_ EASTINGS (X) \_\_\_\_\_

SKETCH: (Include reference tie or witness points, remarks and topo of area)



THIS CORNER RECORD WAS PREPARED BY ME OR UNDER MY DIRECTION IN CONFORMANCE WITH THE SURVEYORS ACT ON September 27, 1987

SIGNED: [Signature]  
 L.S. or R.C.E. No. 3887

8/30/88

COUNTY SURVEYOR'S CERTIFICATE  
 THE CORNER RECORD WAS RECEIVED AND EXAMINED AND FILED BY [Signature] TITLE Acting County Surveyor

DOCUMENT No. \_\_\_\_\_

STATEMENT ON BACK OF SHEET

YES  NO



JERRICO ASSOCIATES

SUITE 27  
77 MARK DRIVE  
SAN RAFAEL, CA 94903

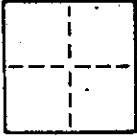
112-080-08

6698

CORNER RECORD

2/4

COUNTY OF Marin T. \_\_\_\_\_ R. \_\_\_\_\_ MERIDIAN \_\_\_\_\_ CALIFORNIA  
CORNER TYPE: GOVT. CORNER  MEANDER  RANCHO  CONTROL  OTHER   
CORNER IDENTIFICATION — DATE OF VISIT \_\_\_\_\_ 19\_\_\_\_



CORNER — LEFT AS FOUND  FOUND AND TAGGED  REESTABLISHED OBLITERATED CORNER  REBUILT

PHYSICAL DESCRIPTION OF CORNER FOUND; EVIDENCE AND METHOD USED TO IDENTIFY OR REESTABLISH

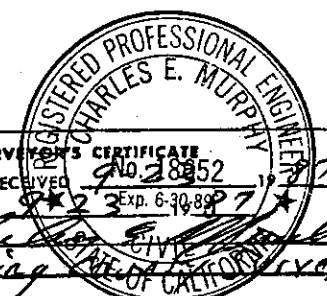
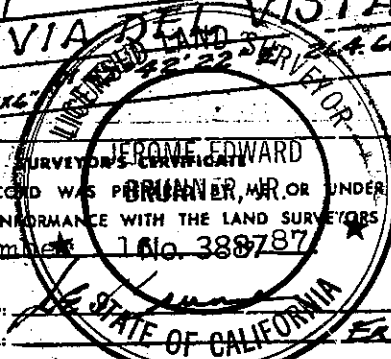
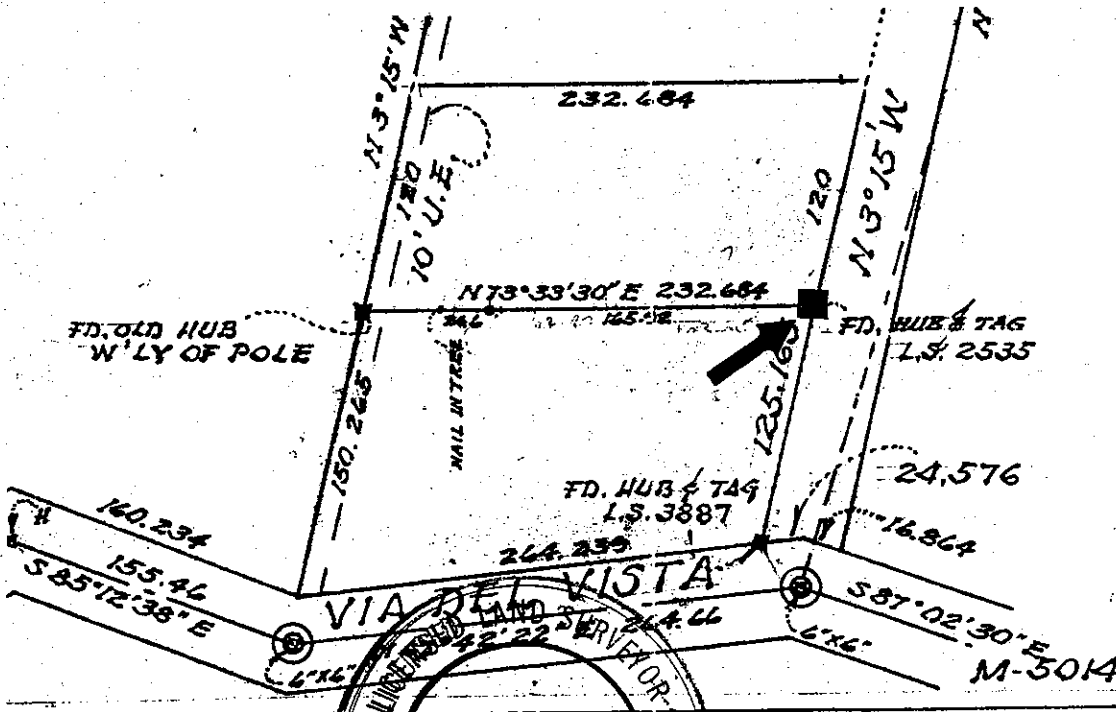
⊙ Found original monuments set for Via Del Vista by Voorhies.  
6"x 6" w/pin or, 6"x 6" and L.S. 2135

■ Found hub and tag L.S. 2535 w/ iron post guard on west side.

PHYSICAL DESCRIPTION OF MONUMENTS REBUILT OR PERPETUATED

CALIFORNIA COORDINATE SYSTEM ORDER: FIRST  SECOND  THIRD   
STATIONS USED: NGS (USC & GS)  STATE  COUNTY  OTHER  STATION \_\_\_\_\_ STATION \_\_\_\_\_  
ZONE \_\_\_\_\_ ELEVATION \_\_\_\_\_ NORTHINGS (Y) \_\_\_\_\_ EASTINGS (X) \_\_\_\_\_

SKETCH: (Include reference tie or witness points, remarks and topo of area)



THIS CORNER RECORD WAS PERFORMED BY \_\_\_\_\_ UNDER MY DIRECTION IN CONFORMANCE WITH THE LAND SURVEYORS ACT ON September 1 No. 388787

SIGNED: \_\_\_\_\_  
L.S. or R.C.E. No. \_\_\_\_\_

COUNTY SURVEYOR'S CERTIFICATE  
THE CORNER RECORD WAS RECEIVED BY \_\_\_\_\_ AND EXAMINED AND FILED BY \_\_\_\_\_  
DATE: \_\_\_\_\_  
TITLE: Acting

DOCUMENT No. \_\_\_\_\_  
STATEMENT ON BACK OF SHEET YES  NO



JERRICO ASSOCIATES

SUITE 27  
77 MARK DRIVE  
SAN RAFAEL, CA 94903

112-080-08

6698

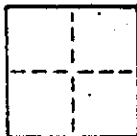
### CORNER RECORD

3/4

COUNTY OF Marin T. \_\_\_\_\_ R. \_\_\_\_\_ MERIDIAN \_\_\_\_\_ CALIFORNIA

CORNER TYPE: GOV'T. CORNER  MEANDER  RANCHO  CONTROL  OTHER

CORNER IDENTIFICATION -- DATE OF VISIT \_\_\_\_\_ 19\_\_\_\_



CORNER -- LEFT AS FOUND  FOUND AND TAGGED  REESTABLISHED OBLITERATED CORNER  REBUILT

PHYSICAL DESCRIPTION OF CORNER FOUND; EVIDENCE AND METHOD USED TO IDENTIFY OR REESTABLISH

- ⊙ Found original monuments set for Via Del Vista by Voorhies.  
6"x 6" w/pin or, 6"x 6" and L.S. 2135
- Found hub and tag L.S. 3887

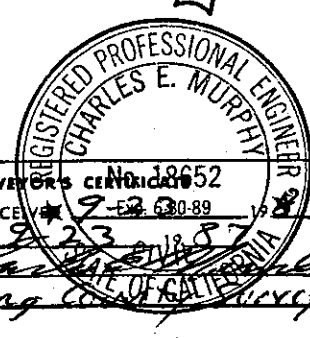
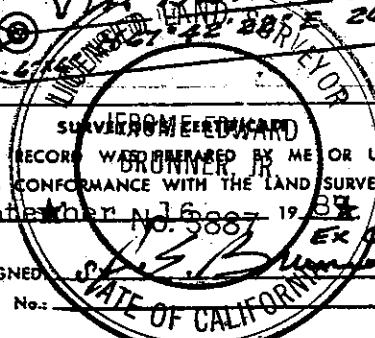
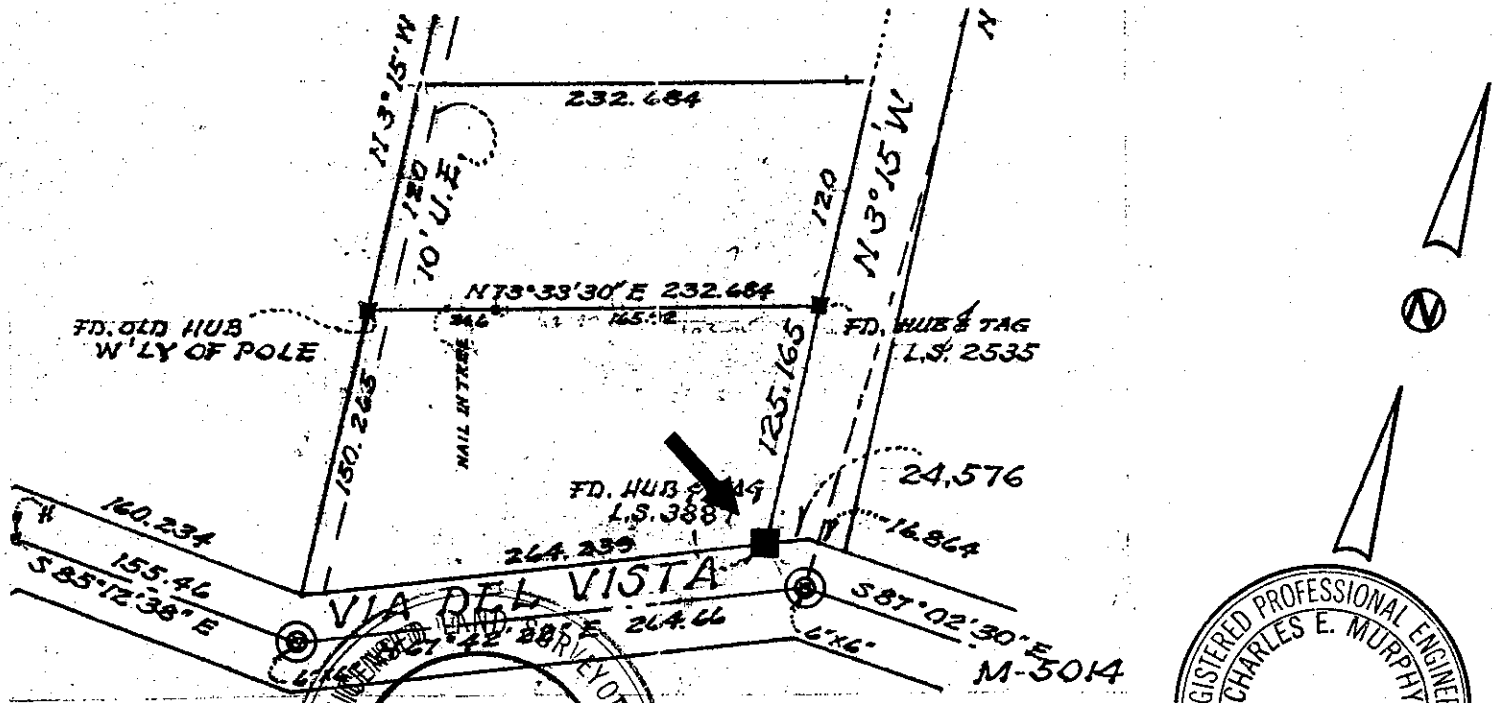
PHYSICAL DESCRIPTION OF MONUMENTS RESULT OR PERPETUATED

CALIFORNIA COORDINATE SYSTEM ORDER: FIRST  SECOND  THIRD

STATIONS USED: NGS (USC & GS)  STATE  COUNTY  OTHER  STATION \_\_\_\_\_ STATION \_\_\_\_\_

ZONE \_\_\_\_\_ ELEVATION \_\_\_\_\_ NORTHINGS (Y) \_\_\_\_\_ EASTINGS (X) \_\_\_\_\_

SKETCH: (Include reference tie or witness points, remarks and topo of area)



THIS CORNER RECORD WAS PREPARED BY ME OR UNDER MY DIRECTION IN CONFORMANCE WITH THE LAND SURVEYORS ACT ON September 16, 2007 1907

SIGNED: [Signature]  
L.S. or R.C.E. No. \_\_\_\_\_

COUNTY SURVEYOR'S CERTIFICATE No. 18652  
THE CORNER RECORD WAS RECEIVED BY [Signature] AND EXAMINED AND FILED 9-23-07  
BY [Signature]  
TITLE: Acting County Surveyor

DOCUMENT No. \_\_\_\_\_  
STATEMENT ON BACK OF SHEET

YES  NO



**JERRICO ASSOCIATES**  
 SUITE 27  
 77 MARK DRIVE  
 SAN RAFAEL, CA 94903

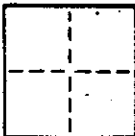
112-080-08

6698

**CORNER RECORD**

4/4

COUNTY OF Marin T. \_\_\_\_\_ R. \_\_\_\_\_ MERIDIAN \_\_\_\_\_ CALIFORNIA  
 CORNER TYPE: GOVT. CORNER  MEANDER  RANCHO  CONTROL  OTHER   
 CORNER IDENTIFICATION — DATE OF VISIT \_\_\_\_\_ 19\_\_\_\_



CORNER — LEFT AS FOUND  FOUND AND TAGGED  REESTABLISHED OBLITERATED CORNER  REBUILT

PHYSICAL DESCRIPTION OF CORNER FOUND; EVIDENCE AND METHOD USED TO IDENTIFY OR REESTABLISH

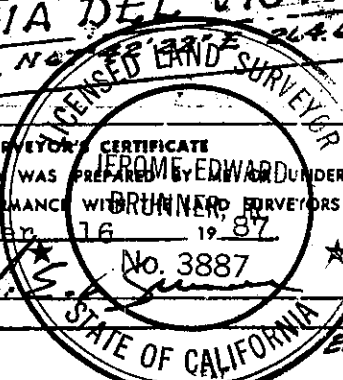
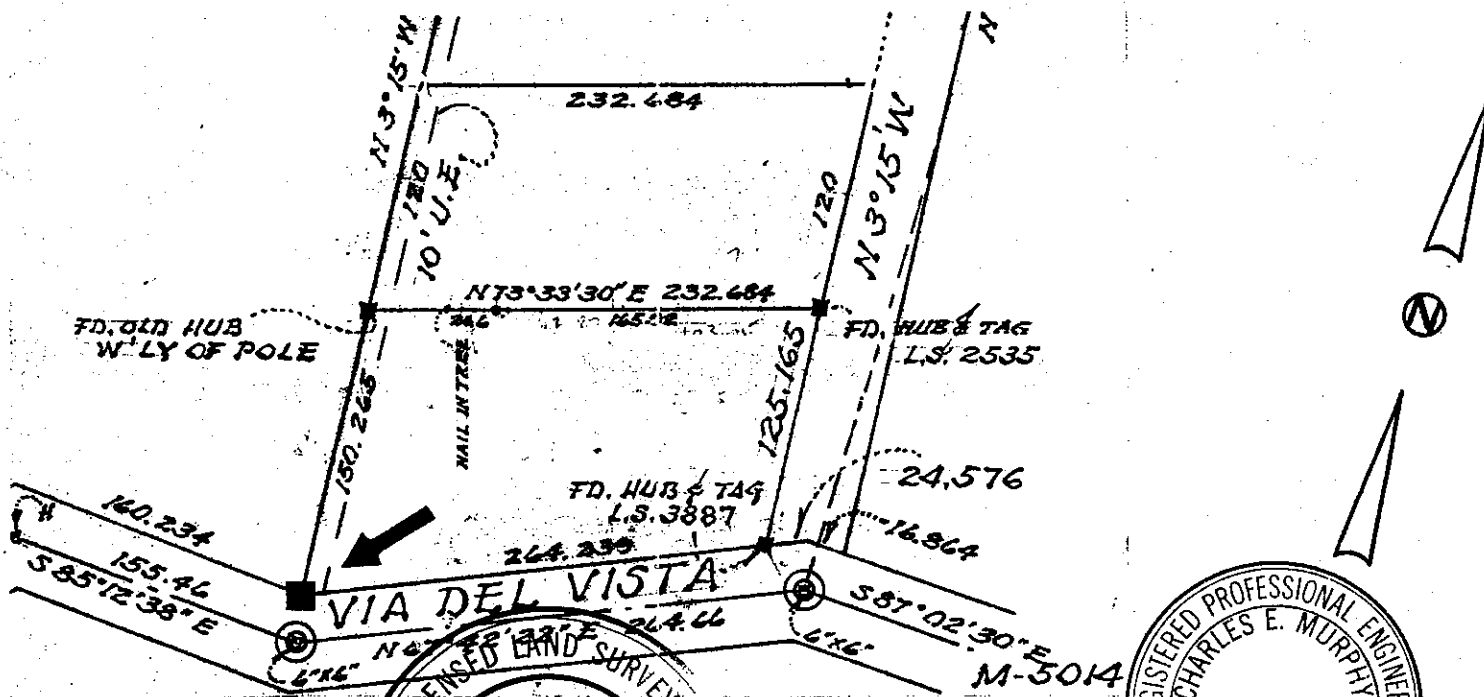
⊙ Found original monuments set for Via Del Vista by Voorhies.  
 6"x 6" w/pin or, 6"x 6" and L.S. 2135

PHYSICAL DESCRIPTION OF MONUMENTS REBUILT OR PERPETUATED

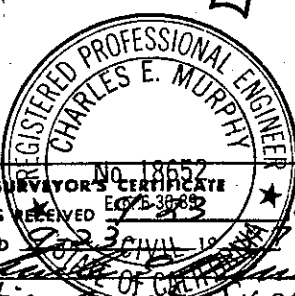
■ Set hub and tag L.S. 3887

CALIFORNIA COORDINATE SYSTEM ORDER: FIRST  SECOND  THIRD   
 STATIONS USED: NGS (USC & GS)  STATE  COUNTY  OTHER  STATION \_\_\_\_\_ STATION \_\_\_\_\_  
 ZONE \_\_\_\_\_ ELEVATION \_\_\_\_\_ NORTHINGS (Y) \_\_\_\_\_ EASTINGS (X) \_\_\_\_\_

SKETCH: (Include reference tie or witness points, remarks and topo of area)



SURVEYOR'S CERTIFICATE  
 THIS CORNER RECORD WAS PREPARED BY EDWARD BRUNNER UNDER MY  
 DIRECTION IN CONFORMANCE WITH THE SURVEYORS ACT  
 ON September 16 1987  
 SIGNED: Edward Brunner  
 L.S. or R.C.E. No. 3887



COUNTY SURVEYOR'S CERTIFICATE  
 THE CORNER RECORD WAS RECEIVED BY \_\_\_\_\_ ON SEP 23 1987  
 AND EXAMINED AND FILED IN \_\_\_\_\_  
 BY: Charles E. Murphy  
 TITLE: Acting County Surveyor

DOCUMENT No. \_\_\_\_\_  
 STATEMENT ON BACK OF SHEET YES  NO