

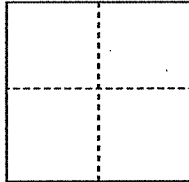
# CORNER RECORD

Documented Number 112-032-19

City of Inverness

County of Marin, California

Brief Legal Description 10' Drainage Esm't and 20' PT&T Esm't shown on 9 PM 79



### CORNER TYPE

Government Corner  Control

Meander  Property

Rancho  Other

### COORDINATES(Optional)

N. \_\_\_\_\_

E. \_\_\_\_\_

Zone \_\_\_\_\_ NAD27  NAD83

NAD83 Epoch \_\_\_\_\_

Elevation \_\_\_\_\_

Vert. Datum: NGVD 29  NADV88

Meas. Units: Metric  Imperial

Date of Survey 8/15-20/2012

Corner- Left as found  Found and tagged  Established  Reestablished  Rebuilt

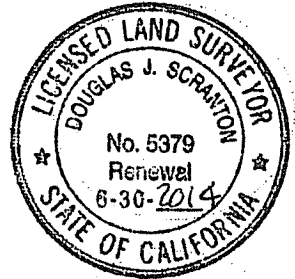
Identification and type of corner found: Evidence used to identify or procedure used to establish or reestablish the corner:  
**REESTABLISHED THE 10 FOOT WIDE DRAINAGE ESM'T AND THE 20 FOOT WIDE PT&T ESM'T EXTENDING ACROSS  
 PARCELS ONE AND TWO AS SAID EASEMENTS AND PARCELS ARE DEPICTED UPON 9 PM 79. SEE SKETCH ON  
 REVERSE SIDE FOR DETAILS. REFER ALSO TO THE MARIN COUNTY RECORD FOR APN 112-032-10 FOR PARCEL THREE  
 OF SAID 9 PM 79 FOR THE LOCATION OF EXISTING POINTS THAT WERE UTILIZED TO REESTABLISH THE  
 EASEMENTS DEPICTED UPON THE SKETCH ON THE REVERSE SIDE.**

A description of the physical condition of the monument as found and as set or reset: SET 1/2 INCH REBAR WITH  
 PLASTIC YELLOW CAP STAMPED "SCRANTON, PLS 5379" AFFIXED TO THE TOP OF THE REBAR. THE TOP OF  
 THE REBAR WITH CAP WAS DRIVEN FLUSH WITH THE SURROUNDING GRADE. SEE SKETCH ON REVERSE SIDE  
 FOR SPECIFIC LOCATIONS OF POINTS SET.

### SURVEYOR'S STATEMENT

This Corner Record was prepared by me or under my direction in conformance with  
 the Land Surveyor's Act on SEPTEMBER 14, 2012

Signed *Douglas J. Scranton* P.L.S. or R.C.E. No.: PLS 5379



### COUNTY SURVEYOR'S STATEMENT

This Corner Record was received SEPTEMBER 17, 2012 and examined  
 and filed OCTOBER 9, 2012

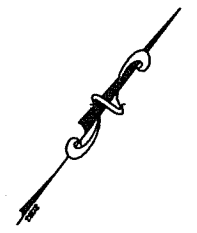
Signed *Craig Tackabery* P.L.S. or R.C.E. No.: 7128

Title COUNTY SURVEYOR

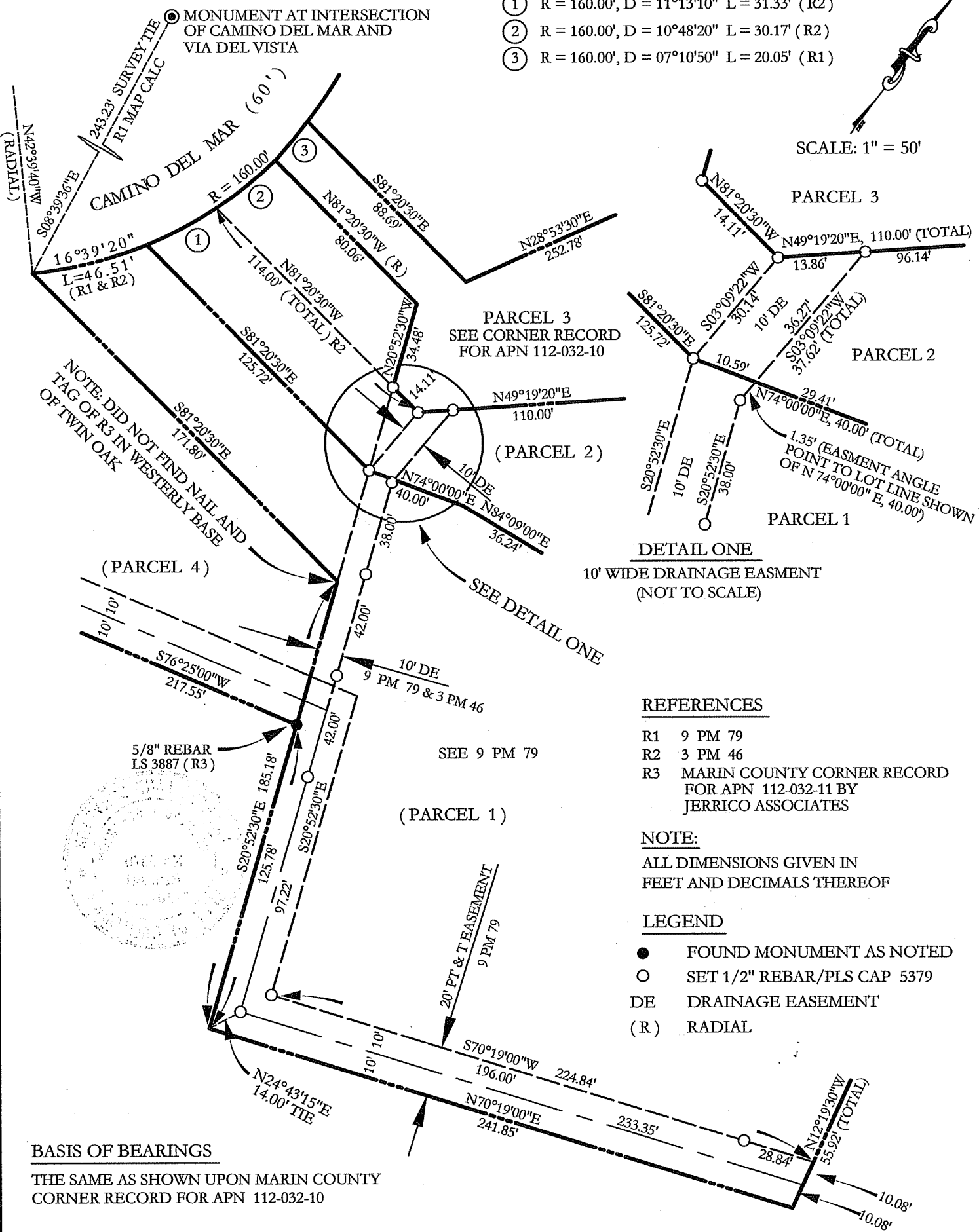


County Surveyor's Comment \_\_\_\_\_

- ① R = 160.00', D = 11°13'10" L = 31.33' (R2)
- ② R = 160.00', D = 10°48'20" L = 30.17' (R2)
- ③ R = 160.00', D = 07°10'50" L = 20.05' (R1)



SCALE: 1" = 50'



**DETAIL ONE**

10' WIDE DRAINAGE EASEMENT  
(NOT TO SCALE)

**REFERENCES**

- R1 9 PM 79
- R2 3 PM 46
- R3 MARIN COUNTY CORNER RECORD FOR APN 112-032-11 BY JERRICO ASSOCIATES

**NOTE:**

ALL DIMENSIONS GIVEN IN FEET AND DECIMALS THEREOF

**LEGEND**

- FOUND MONUMENT AS NOTED
- SET 1/2" REBAR/PLS CAP 5379
- DE DRAINAGE EASEMENT
- (R) RADIAL

**BASIS OF BEARINGS**

THE SAME AS SHOWN UPON MARIN COUNTY CORNER RECORD FOR APN 112-032-10

NOTE: DID NOT FIND NAIL AND TAG OF R3 IN WESTERLY BASE OF TWIN OAK

