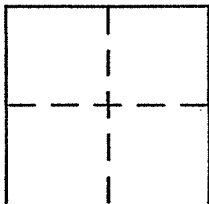


CORNER RECORD

Document Number I.N. 2007-0072327

City of Vicinity Marshall County of MARIN, California

Brief Legal Description Drainfield Easement per I.N. 2007-0072327, Marin County Records



CORNER TYPE

Government Corner Control
 Meander Property
 Rancho Other
 Date of Survey _____

COORDINATES (Optional)

N. _____
 E. _____
 Zone _____ NAD27 NAD83
 NAD83 Epoch _____
 Elev. _____
 Vert. Datum: NGVD29 NAVD88
 Meas. Units: Metric Imperial

Corner - Left as found Found and tagged Established Reestablished Rebuilt

Identification and type of corner found: Evidence used to identify or procedure used to establish or reestablish the corner:

Found 1/2" rebar with plastic cap "PLS 6234" per Book 1999 of Maps, Page 261,
Marin County Records.

A description of the physical condition of the monument as found and as set or reset: _____

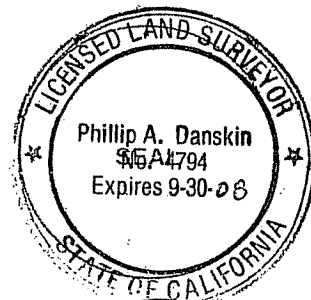
Establish northerly, easterly and southerly line of Drainfield Easement per
Instrument Number 2007-0072327, Marin County Records, as shown upon reverse side.

SURVEYOR'S STATEMENT

This Corner Record was prepared by me or under my direction in conformance with

the Land Surveyor's Act on 11 October 2007

Signed [Signature] P.L.S or R.C.E. No. PLS 4794



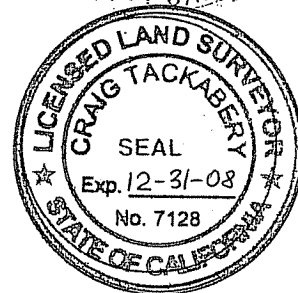
COUNTY SURVEYOR'S STATEMENT

This Corner Record was received FEBRUARY 27, 2008

and examined and filed JUNE 11, 2008

Signed [Signature] P.L.S or R.C.E. No. 7128

Title COUNTY SURVEYOR



County Surveyor's Comment _____

PHILLIP A. DANSKIN & ASSOCIATES
 LAND SURVEYOR
 SONOMA, CALIFORNIA
 PHONE: (707) 938-2520

SURVEY No. 914

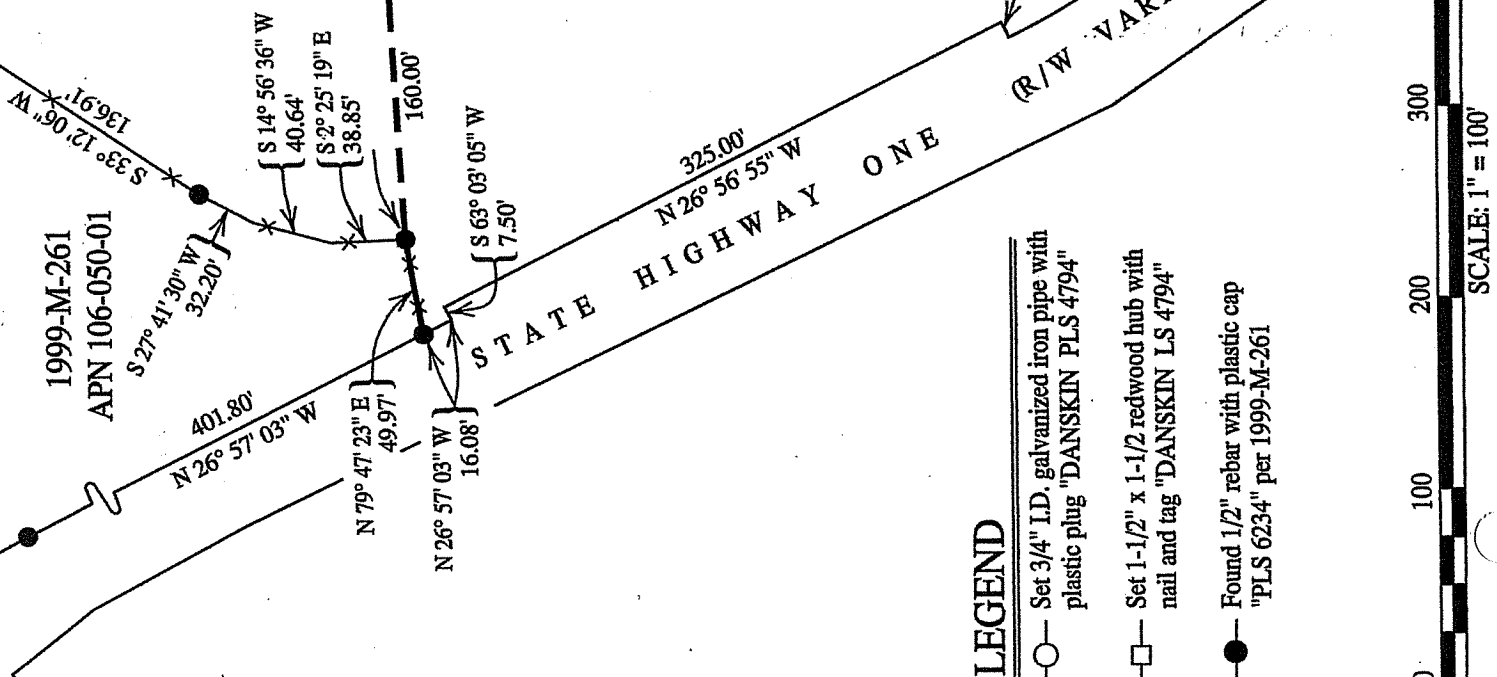
For: Quesia Engineering Corp.
 P.O. Box 70356
 Point Richmond, California

GOODMAN/BARINAGA TR.

I.N. 2001-63282

APN 106-210-75

DRAINFIELD EASEMENT
 PER I.N. 2007-0072327



LEGEND

- Set 3/4" I.D. galvanized iron pipe with plastic plug "DANSKIN PLS 4794"
- Set 1-1/2" x 1-1/2" redwood hub with nail and tag "DANSKIN LS 4794"
- Found 1/2" rebar with plastic cap "PLS 6234" per 1999-M-261

