

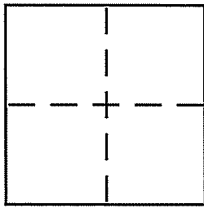
**CORNER RECORD**

Document Number APN: 106-140-10

City of UNINCORPORATED AREA

County of \_\_\_\_\_, California

Brief Legal Description LANDS OF CRAW AS SHOWN ON THAT RECORD OF SURVEY 18 RS 34



**CORNER TYPE**

Government Corner  Control   
Meander  Property   
Rancho  Other   
Date of Survey JULY 13, 2012

**COORDINATES (Optional)**

N. \_\_\_\_\_  
E. \_\_\_\_\_  
Zone \_\_\_\_\_ NAD27  NAD83   
NAD83 Epoch \_\_\_\_\_  
Elev. \_\_\_\_\_  
Vert. Datum: NGVD29  NAVD88   
Meas. Units: Metric  Imperial

Corner - Left as found  Found and tagged  Established  Reestablished  Rebuilt

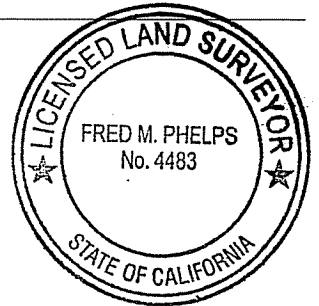
Identification and type of corner found: Evidence used to identify or procedure used to establish or reestablish the corner:  
FOUND 1/2" IRON PIPES (NOT TAGGED) AT THE NORTHERLY CORNER AND THE ANGLE POINT IN THE NORTHWESTERLY LINE OF THE LANDS OF DOLCINI AS SHOWN ON 18RS34. RECORD DISTANCES AND ANGLES WERE HELD TO REESTABLISH THE MISSING CORNERS OF THE LANDS OF CRAW AS SHOWN ON THE ABOVE-REFERENCED MAP.

A description of the physical condition of the monument as found and as set or reset: FOUND 1/2" IRON PIPE (NOT TAGGED) AT THE SOUTHERLY CORNER OF THE LANDS OF CRAW; NO OTHER CORNERS FOUND. REPLACED EAST, WEST AND NORTH CORNERS WITH 3/4" IRON PIPES (TAGGED LS 4483)

**SURVEYOR'S STATEMENT**

This Corner Record was prepared by me or under my direction in conformance with the Land Surveyor's Act on JULY 17 2012

Signed FRED M. PHELPS P.L.S or R.C.E. No. LS 4483



**COUNTY SURVEYOR'S STATEMENT**

This Corner Record was received AUGUST 21, 2012

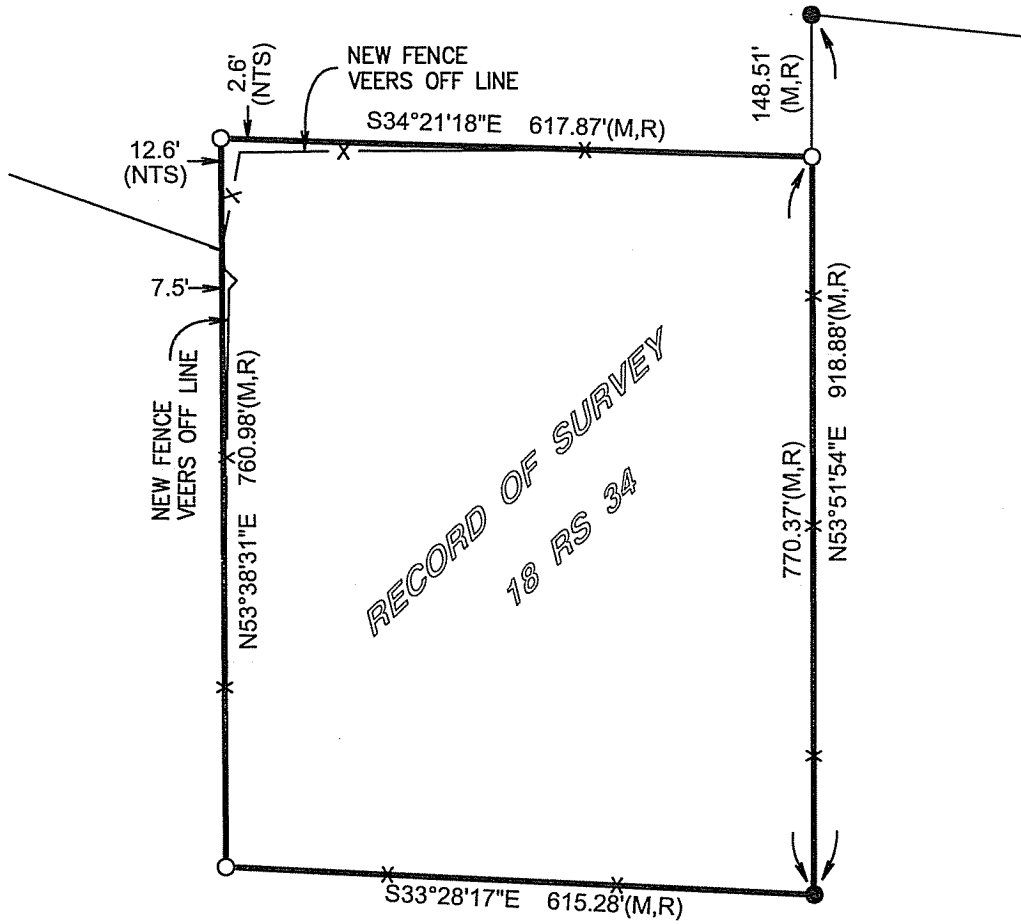
and examined and filed AUGUST 23, 2012

Signed \_\_\_\_\_ P.L.S or R.C.E. No. 7128

Title COUNTY SURVEYOR

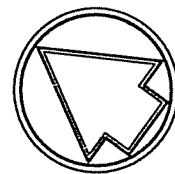


County Surveyor's Comment \_\_\_\_\_



Legend

- = 3/4" iron pipe set (tagged LS 4483)
- = 1/2" iron pipe found (not tagged)
- R = Record of Survey / 18 Maps 34
- M = Measured
- NTS = Not to scale
- x- = Fence line



1" = 200'