

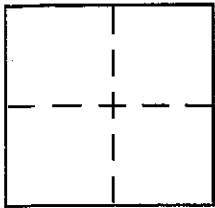
CORNER RECORD

Document Number APN 106-130-05

City of NICASIO AREA

County of MARIN, California

Brief Legal Description APN 106-130-05



CORNER TYPE

Government Corner Control
Meander Property
Rancho Other
Date of Survey 8/14/03

COORDINATES (Optional)

N. _____
E. _____
Zone _____ NAD27 NAD83
NAD83 Epoch _____
Elev. _____
Vert. Datum: NGVD29 NAVD88
Meas. Units: Metric Imperial

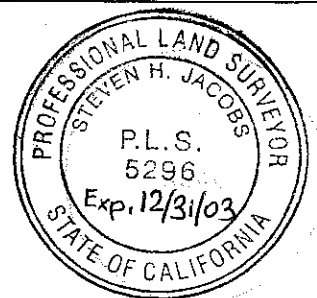
Corner - Left as found Found and tagged Established Reestablished Rebuilt

Identification and type of corner found: Evidence used to identify or procedure used to establish or reestablish the corner:
FOUND MONUMENTATION AS SHOWN ON 8 PM 23 AND ON REVERSE.
(see sheets 1 & 2 OF 4 OF SAID MAP)

A description of the physical condition of the monument as found and as set or reset: SET 3/4" I.P.'s, TAGGED
PLS 5296 AND 2" X 2" HUBS TAGGED PLS 5296 AS SHOWN
ON REVERSE.

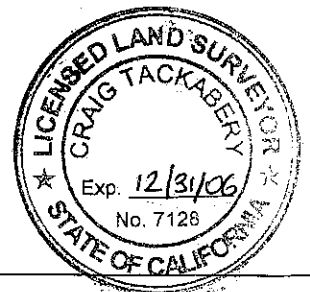
SURVEYOR'S STATEMENT

This Corner Record was prepared by me or under my direction in conformance with
the Land Surveyor's Act on AUGUST 18, 2003
Signed [Signature] P.L.S. or R.C.E. No. PLS 5296



COUNTY SURVEYOR'S STATEMENT

This Corner Record was received NOVEMBER 3, 2003
and examined and filed NOVEMBER 14, 2003
Signed [Signature] P.L.S. or R.C.E. No. 7128
Title COUNTY SURVEYOR



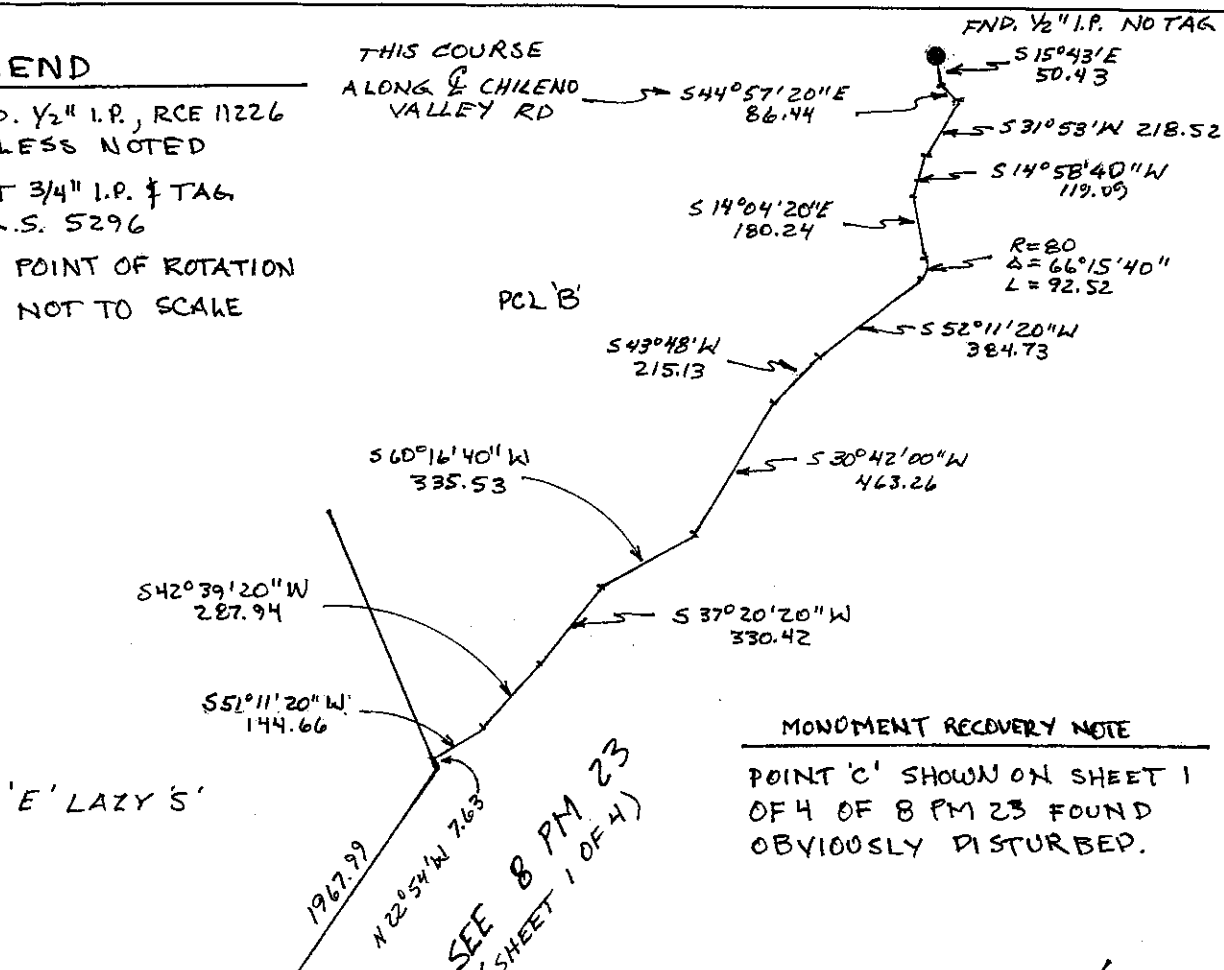
County Surveyor's Comment _____

LEGEND

- FND. 1/2" I.P., RCE 11226 UNLESS NOTED
- SET 3/4" I.P. & TAG P.L.S. 5296
- P.O.R. POINT OF ROTATION
- N.T.S. NOT TO SCALE

THIS COURSE ALONG CHILEND VALLEY RD

FND. 1/2" I.P. NO TAG



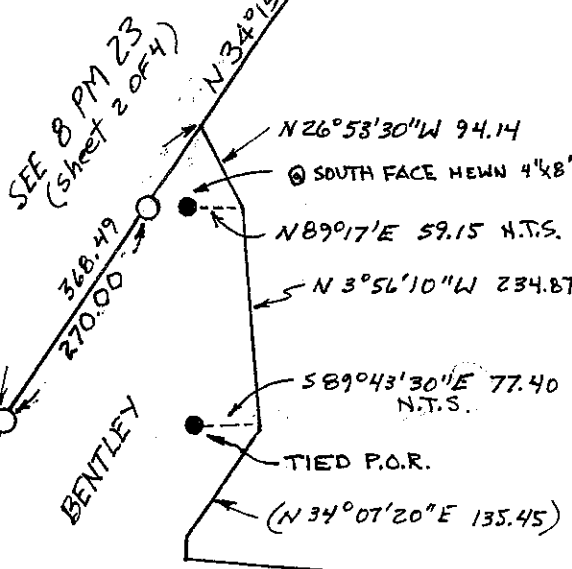
MONUMENT RECOVERY NOTE

POINT 'C' SHOWN ON SHEET 1 OF 4 OF 8 PM 23 FOUND OBVIOUSLY DISTURBED.

LINE POINTS NOTE

2"x2" HUBS & TAGS SET AT N 34° 15' E 46.40, 193.89 & 309.84 FEET FROM SET I.P. & TAG AT THE PROPERTY LINE ANGLE POINT.

FND. DESTROYED 1/2" I.P., RCE 11226 ON GROUND AT CALCULATED POSITION.



DETAIL
SCALE: 1"=200'

NORTH
SCALE: 1"=600'