

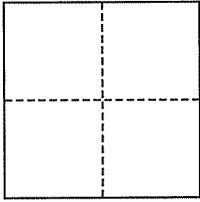
CORNER RECORD

Document Number AP#102-072-05

City of Tomales

County of Marin, California

Brief Legal Description Lot 17, Block 17, 1 RM 114



CORNER TYPE

Government Corner Control
Meander Property
Rancho Other
Date of Survey February 27, 2009

COORDINATES (Optional)

N. _____
E. _____
Zone _____ NAD27 NAD83
NAD83 Epoch _____
Elev. _____
Vert. Datum: NGVD29 NAVD88
Meas. Units: Metric Imperial

Corner- Left as found Found and tagged Established Reestablished Rebuilt

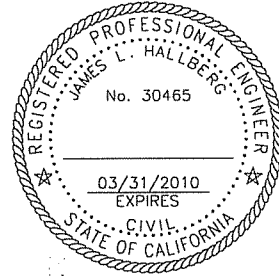
Identification and type of corner found: Evidence used to identify or procedure used to establish or reestablish the corner:
Found Iron Pipe & Plug, LS 4788, at both Property Corners of the Northerly line, per 26 RS 8.

A description of the physical condition of the monument as found and as set or reset: Set line points per 26 RS 8 as shown and noted.

SURVEYOR'S STATEMENT

This corner Record was prepared by me or under my direction in conformance with the Land Surveyor's Act on March 3, 2009

Signed [Signature] P.L.S. or R.C.E. No. 30465



COUNTY SURVEYOR'S STATEMENT

This Corner Record was received MARCH 9, 2009
and examined and filed APRIL 2, 2009

Signed [Signature] P.L.S. or R.C.E. No. 7128

Title COUNTY SURVEYOR



County Surveyor's Comment _____

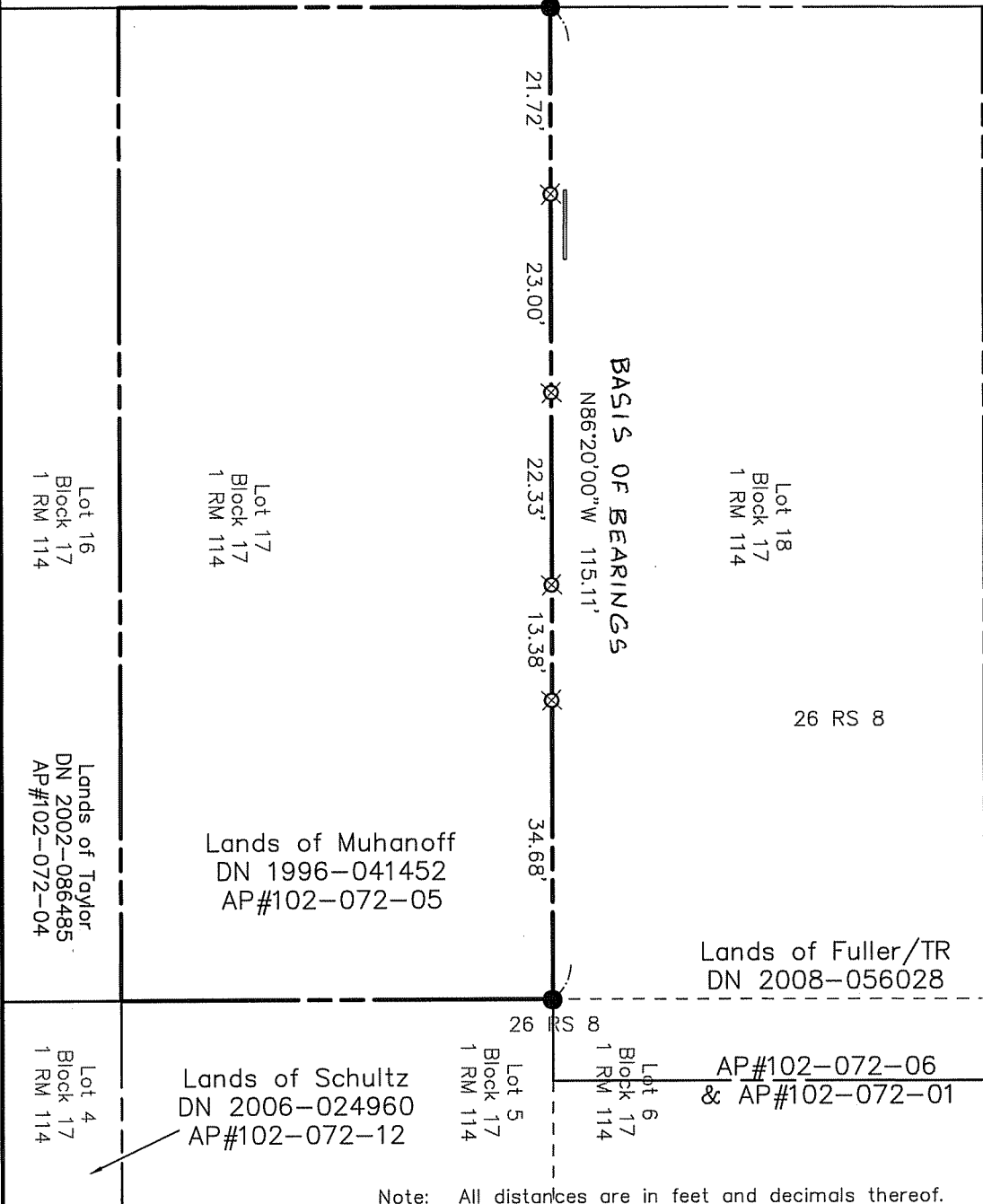
LEGEND

- FOUND IP & PLUG, LS 4788, PER 26 RS 8
- ⊗ SET REBAR & CAP, RCE 30465

SCALE: 1" = 20'



STATE ROUTE 1 (80'R/W)



NOTE:
 Record of Survey 26 RS 8 contains a clerical error in the bearing of the North-South lines of the 1 RM 114, and 19 RM 66, lots; namely, S86°20'E is scribed as N86°20'E.
 A Certificate of Correction, I.N.1998-041830, was duly recorded by the Surveyor.

Note: All distances are in feet and decimals thereof.

SHEET	1	OF	1
SCALE:	1" = 20'	DESIGN:	PR
DATE:	Mar. 2009	DRAWN:	PR
FILE:	2009-013	CHECKED:	J.L.H

J.L. ENGINEERING
 CIVIL ENGINEERS-LAND SURVEYORS
 1539 4th ST., SAN RAFAEL, CA. 94901 (415) 457-6647

Corner Record
 Lands of Muhanoff - 27060 State Route 1
 APN 102-072-05, Tomales, Marin County, CA