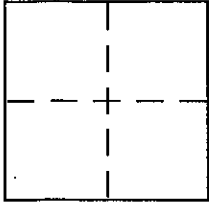


CORNER RECORD

Document Number A.P. NO. 100-343-08City of DILLON BEACHCounty of MARIN, CaliforniaBrief Legal Description LOT 259, "OCEANA MARIN UNIT NO. 5" (15M11)

CORNER TYPE

Government Corner ☐ Control ☐
Meander ☐ Property ☒
Rancho ☐ Other ☐
Date of Survey JANUARY 7, 2002

COORDINATES (Optional)

N. _____
E. _____
Zone _____ NAD27 ☐ NAD83 ☐
NAD83 Epoch _____
Elev. _____
Vert. Datum: NGVD29 ☐ NAVD88 ☐
Meas. Units: Metric ☐ Imperial ☐

Corner - Left as found ☒ Found and tagged ☐ Established ☒ Reestablished ☐ Rebuilt ☐

Identification and type of corner found: Evidence used to identify or procedure used to establish or reestablish the corner:

FOUND SUBDIVISION MONUMENT- DISC WITH PUNCH
FOUND 1" IRON PIPE & TAG LS 3616

A description of the physical condition of the monument as found and as set or reset:

SET 5/8" REBAR & PLASTIC CAP LS 5252

SURVEYOR'S STATEMENT

This Corner Record was prepared by me or under my direction in conformance with
the Land Surveyor's Act on FEBRUARY 9, 2002

Signed Jeffrey D. Black P.L.S. or R.C.E. No. 5252

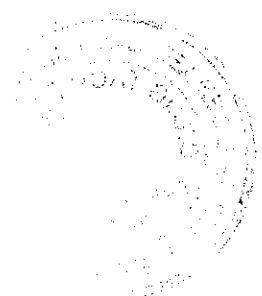
COUNTY SURVEYOR'S STATEMENT

This Corner Record was received FEBRUARY 21, 2002
and examined and filed FEBRUARY 21, 2002

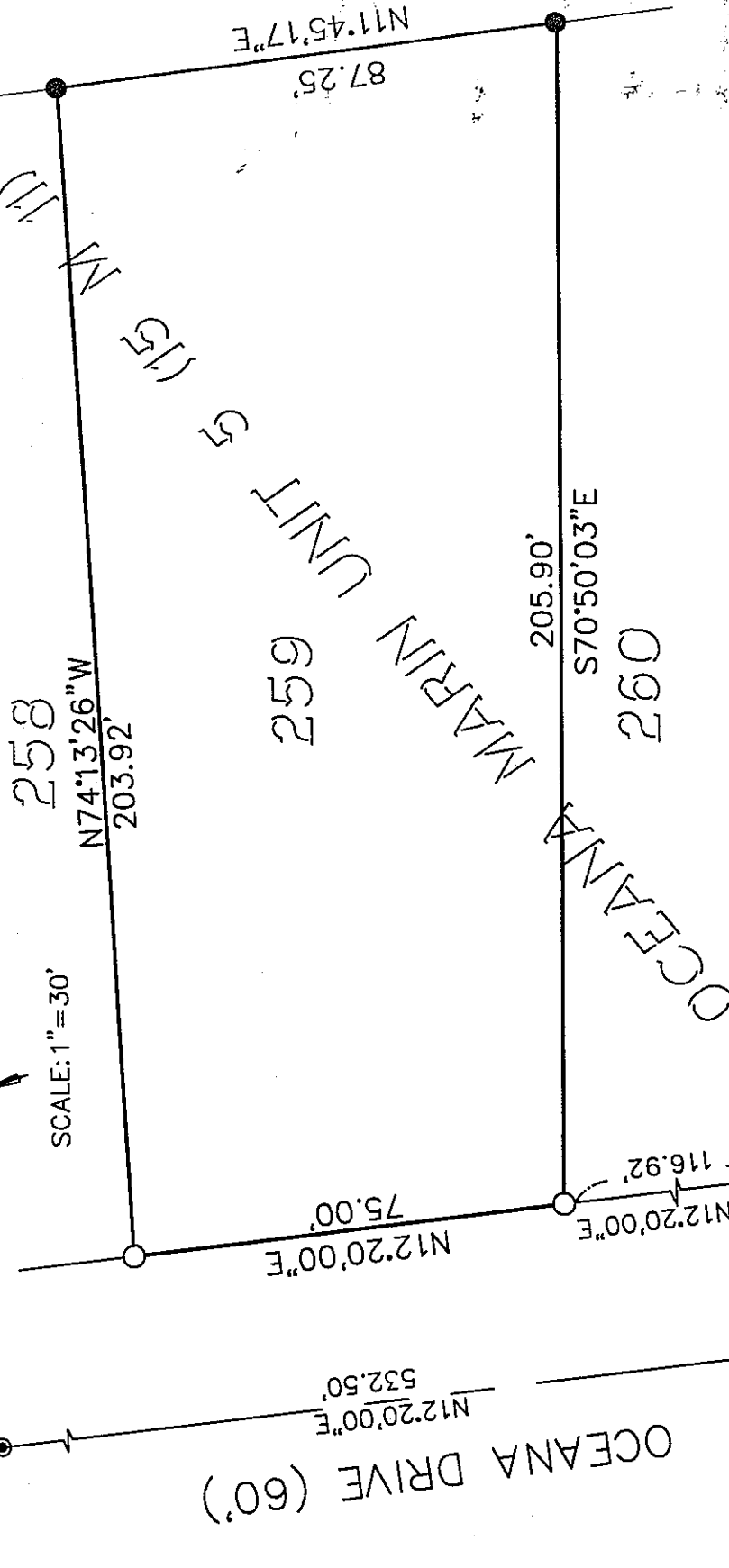
Signed [Signature] P.L.S. or R.C.E. No. 7128
Title DEPUTY

County Surveyor's Comment _____





SCALE: 1"=30'



LEGEND

- SET REBAR AND CAP LS 5252
- FOUND SUBDIVISION MONUMENT-DISC WITH PUNCH
- FOUND 1" IRON PIPE WITH TAG LS 3616

R=450.00'
Δ=2°49'13"
L=22.15'

KAMEHA WAY (50')