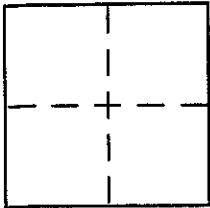


CORNER RECORD

Document Number 100-331-12City of Unincorporated APN 100-331-12 County of MARIN, CaliforniaBrief Legal Description Lot 158 Oceana Marin Unit 5 15 RM 11

CORNER TYPE

Government Corner ☐ Control ☐
Meander ☐ Property ☒
Rancho ☐ Other ☐
Date of Survey _____

COORDINATES (Optional)

N. _____
E. _____
Zone _____ NAD27 ☐ NAD83 ☐
NAD83 Epoch _____
Elev. _____
Vert. Datum: NGVD29 ☐ NAVD88 ☐
Meas. Units: Metric ☐ Imperial ☐

Corner - Left as found ☐ Found and tagged ☐ Established ☐ Reestablished ☒ Rebuilt ☐

Identification and type of corner found: Evidence used to identify or procedure used to establish or reestablish the corner:

The northwest corner of Lot 158, a 3/4" iron pipe and tag LS 3616, was found out of position by 0.66 feet; this corner was reset in its original position. The northeast corner of Lot 158 was not found; this corner was reset in its original position. Existing corners of Lot 159 & Lot 157 were located and verified by this surveyor.
A description of the physical condition of the monument as found and as set or reset: Both corners set are 1/2" iron pipes 30" long with tags PLS 6702.

SURVEYOR'S STATEMENT

This Corner Record was prepared by me or under my direction in conformance with the Land Surveyor's Act on August 4 2001

Signed Susan D. Ruschmeyer P.L.S. or R.C.E. No. 6702

COUNTY SURVEYOR'S STATEMENT

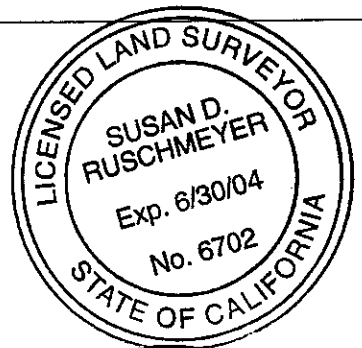
This Corner Record was received AUGUST 6, 2001

and examined and filed AUGUST 7, 2001

Signed Craig Tackabery P.L.S. or R.C.E. No. 7128

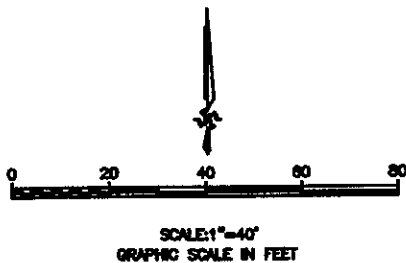
Title DEPUTY

County Surveyor's Comment _____

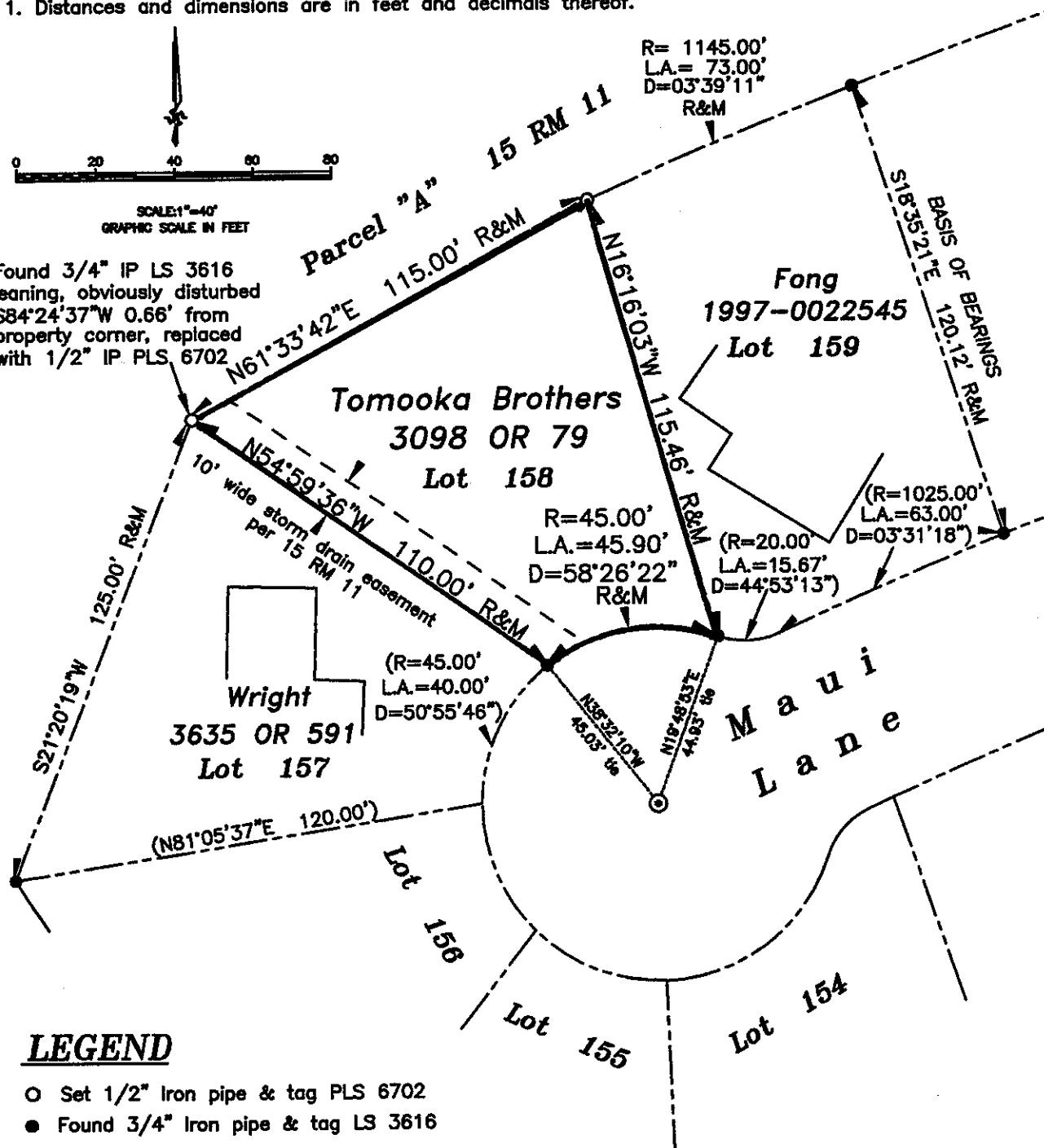


NOTES

1. Distances and dimensions are in feet and decimals thereof.



Found 3/4" IP LS 3616 leaning, obviously disturbed S84°24'37"W 0.66' from property corner, replaced with 1/2" IP PLS 6702



LEGEND

- Set 1/2" Iron pipe & tag PLS 6702
- Found 3/4" Iron pipe & tag LS 3616
- ⊙ Found 3" brass disk in well monument stamped LS 3616

N54°59'36"W 110.00' R&M Record data per 15 RM 11 and measured data

(S19°39'50"E 120.46')

Record data per 15 RM 11

Boundary of subject property

Boundary of other lands

Easement line