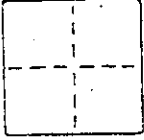


A.P. # 100-311-13

CORNER RECORD

COUNTY OF MARIN T. 5 N R. 10 W MD MERIDIAN CALIFORNIA
 CORNER TYPE: GOVT. CORNER ☐ MEANDER ☐ RANCHO ☐ CONTROL ☐ OTHER ☒
 CORNER IDENTIFICATION — DATE OF VISIT 12-20 1990



CORNER — LEFT AS FOUND ☐ FOUND AND TAGGED ☐ REESTABLISHED OBLITERATED CORNER ☒ REBUILT ☐

PHYSICAL DESCRIPTION OF CORNER FOUND; EVIDENCE AND METHOD USED TO IDENTIFY OR REESTABLISH

OCCUPIED FOUND WELL MONUMENT; SIGHTED NORTHWEST CORNER LOT 208, CHECKED INTO P.R.C. LOT 207 AND SET NORTHEAST CORNER LOT 208 BY RECORD ANGLE AND DISTANCE

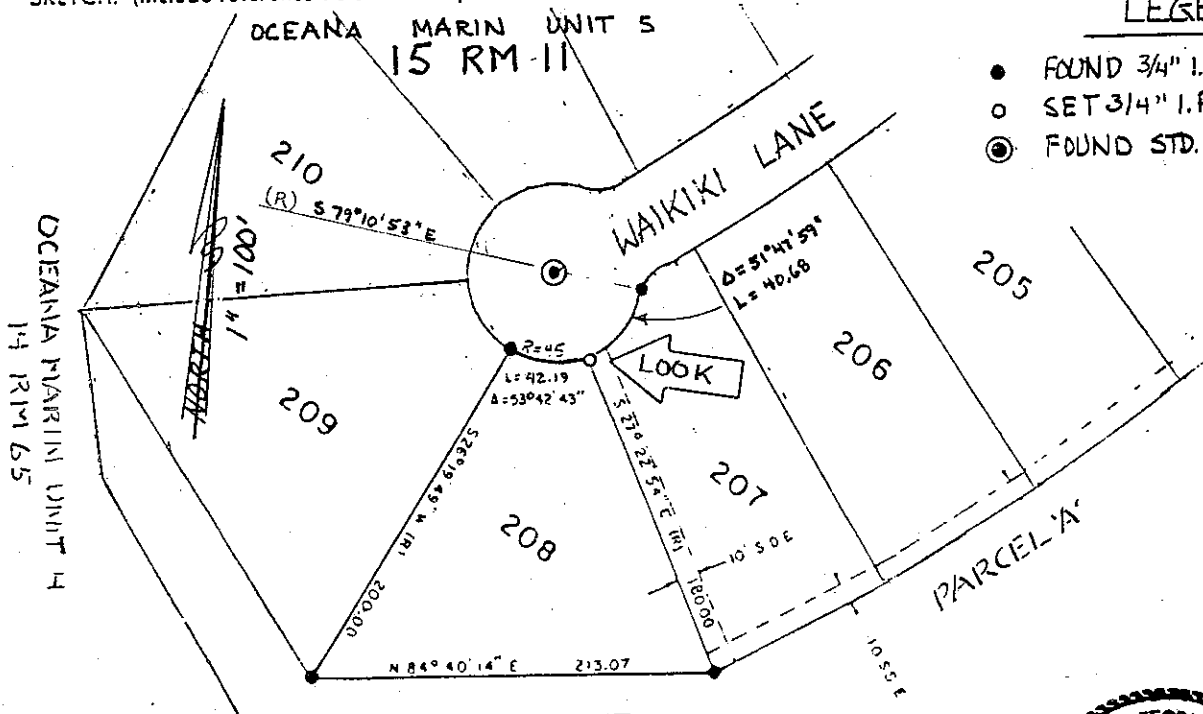
A.P. # 100-311-13

PHYSICAL DESCRIPTION OF MONUMENTS REBUILT OR PERPETUATED

SET 3/4" IRON PIPE TAGGED L.S. 5296
 5.2' BEHIND CONCRETE FACE OF CURB.

CALIFORNIA COORDINATE SYSTEM ORDER: FIRST ☐ SECOND ☐ THIRD ☐
 STATIONS USED: NGS (USC & OS) ☐ STATE ☐ COUNTY ☐ OTHER ☐ STATION _____ STATION _____
 ZONE _____ ELEVATION _____ NORTHINGS (N) _____ EASTINGS (E) _____

SKETCH: (Include reference tie or witness points, remarks and topo of area)

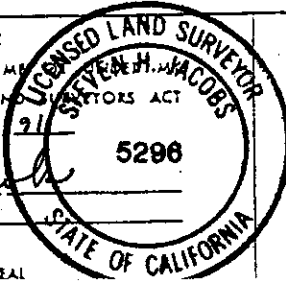


LEGEND

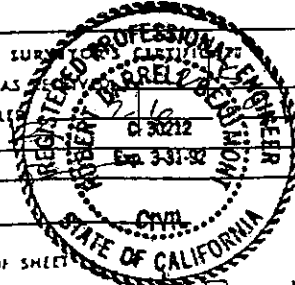
- FOUND 3/4" I.P. TAGS ILLEGIBLE
- SET 3/4" I.P. TAGGED L.S. 5296
- ⊙ FOUND STD. WELL MONUMENT

SURVEYOR'S CERTIFICATE

THIS CORNER RECORD WAS PREPARED BY ME IN THE
 DIRECTION IN CONFORMANCE WITH THE LAND SURVEYORS ACT
 ON JANUARY 7, 1991

SIGNED: Steven H. JacobsL.S. or R.C.E. No. L.S. 5296

COUNTY SURVEYOR'S CERTIFICATE
 THE CORNER RECORD WAS
 AND EXAMINED AND FILED
 BY: 1/10/91
 TITLE: _____
 DOCUMENT No. _____
 STATEMENT ON BACK OF SHEET _____

NC ☒