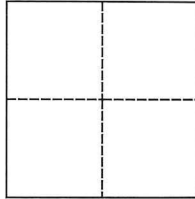


CORNER RECORD

Agency Index DPW 18-038Document Number A.P.N. 100-251-11City of DILLON BEACH County of MARIN, CaliforniaBrief Legal Description LOT 5, MAP OF OCEANA MARIN, VOL. 13 OF MAPS, PAGE 37, MARIN COUNTY RECORDS

CORNER TYPE

Government Corner ☐ Control ☐
Meander ☐ Property ☒
Rancho ☐ Other ☐Date of Survey 05/02/2018

COORDINATES (Optional)

N. _____ E. _____

Elevation _____

Units ☒ Metric ☐ U.S. Survey Foot ☐

Horizontal Datum _____

Zone _____ Epoch Date _____

Vertical Datum _____

☐ Complies with Public Resources Code §§8801-8819☐ Complies with Public Resources Code §§8890-8902PLS Act Ref.: ☒ 8765(d) ☐ 8771 ☐ 8773 ☐ Other:Corner/
Monument: ☐ Left as found ☒ Established ☐ Rebuilt ☐ Pre-Construction
☐ Found and tagged ☒ Reestablished ☐ Referenced ☐ Post-Construction

Narrative of corner identified and monument as found, set, reset, replaced, or removed:

☐ See sheet #2 for description(s):

HELD RECORD BEARINGS & DISTANCES FROM FOUND MONUMENTS AS SHOWN AND DELINEATED ON THE MAP OF OCEANA MARIN SUBDIVISION, VOL. 13 OF MAPS, PAGE 37, MARIN COUNTY RECORDS, AND ON CORNER RECORD DOC. NUMNER AP 100-251-11, DATED NOVEMBER 2001 TO ESTABLISH EAST COMMON LOT 4 AND LOT 5 CORNER, AND RE-ESTABLISH EASTERLY ANGLE POINT LOT 5 CORNER. SEE EXHIBIT HEREIN PAGE 2 OF 2.

SURVEYOR'S STATEMENT

This Corner Record was prepared by me or under my direction in conformance with

the Professional Land Surveyors' Act on June 29, 2018Signed Ray C. Carlson P.L.S. or R.C.E. No. 3890

COUNTY SURVEYOR'S STATEMENT

This Corner Record was received JUNE 5, 2018and examined and filed JULY 30, 2018Signed John R. Semerad P.L.S. or R.C.E. No. 9292Title DEPUTY C.S.

County Surveyor's Comment



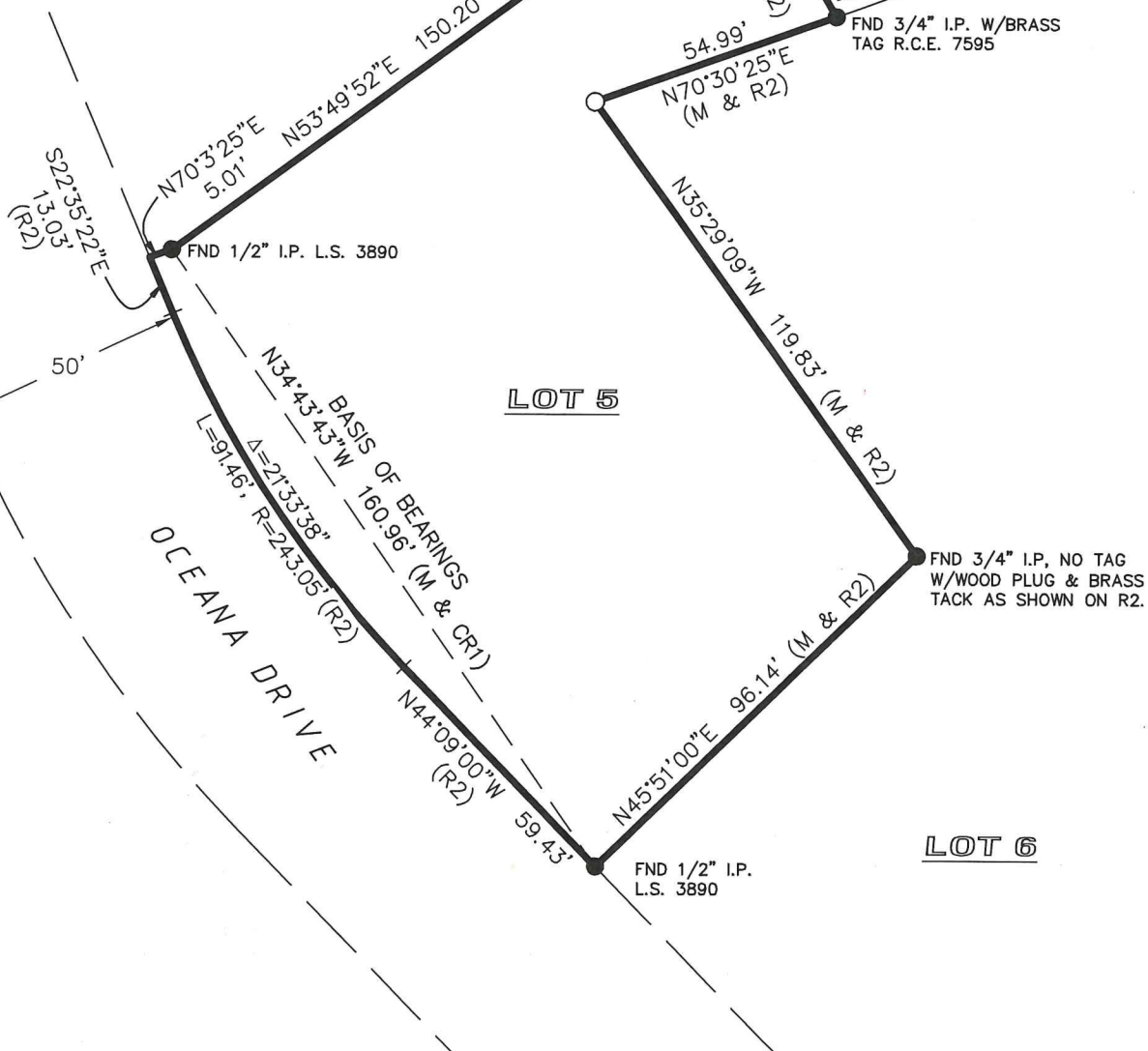
REFERENCES

R1 MAP OF OCEANA MARIN, VOL.
13 OF MAPS, PAGE 37, MARIN
COUNTY RECORDS/.

R2 CORNER RECORD DOC. # A.P.
100-251-11 DATED NOVEMBER
2001.

LOT 4

$\Delta=83^{\circ}31'56''$
(M & R1,R2)

**LEGEND**

FOUND MONUMENT AS NOTED

SET 1/2" IRON PIPE, TAGGED LS
3890

(M & R1)

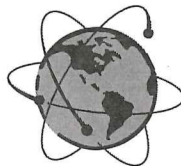
MEASURED AND RECORD
INDICATED

(M & CR1)

MEASURED AND CALCULATED
FROM RECORD INDICATED

— — — — — ADJOINING LOT LINE

————— BOUNDARY LINE

MAP OF OCEANA MARIN**13 MAPS 37**

RAY CARLSON
AND ASSOCIATES, INC.

Mapping for a Better World™

SURVEYING • MAPPING • GIS • CONSULTING
411 RUSSELL AVENUE SANTA ROSA, CALIFORNIA 95403
(707) 528-7649 • RCMAPS.COM

© 2018, Ray Carlson and Associates, Inc.

APN 100-251-11 MAY 2018 JOB NO. 2018-086