



JERRICO ASSOCIATES
SUITE 27
77 MARK DRIVE
SAN RAFAEL, CA 94903

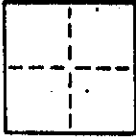
A.P. # 100-251-08

6878

CORNER RECORD

1/9

COUNTY OF Marin T. _____ R. _____ MERIDIAN CALIFORNIA
CORNER TYPE: GOVT. CORNER ☐ MEANDER ☐ RANCHO ☐ CONTROL ☐ OTHER ☐
CORNER IDENTIFICATION — DATE OF VISIT _____ 19____



CORNER — LEFT AS FOUND ☐ FOUND AND TAGGED ☐ REESTABLISHED OBLITERATED CORNER ☐ REBUILT ☐

PHYSICAL DESCRIPTION OF CORNER FOUND; EVIDENCE AND METHOD USED TO IDENTIFY OR REESTABLISH

Meridian based on centerline monuments Oceana Marin 13 R.M. 37

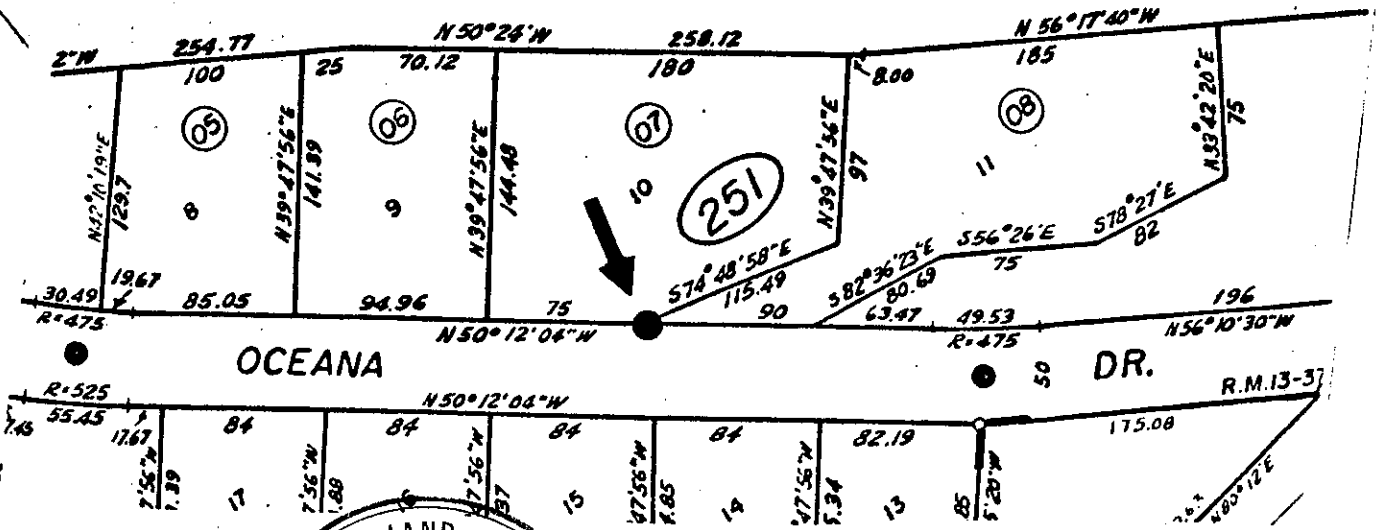
PHYSICAL DESCRIPTION OF MONUMENTS. REBUILT OR PERPETUATED



Set rebar (#5) and cap L.S. 3887

CALIFORNIA COORDINATE SYSTEM ORDER: FIRST ☐ SECOND ☐ THIRD ☐
STATIONS USED: NGS (USC & GS) ☐ STATE ☐ COUNTY ☐ OTHER ☐ STATION _____ STATION _____
ZONE _____ ELEVATION _____ NORTHINGS (Y) _____ EASTINGS (X) _____

SKETCH: (Include reference tie or witness points, remarks and topo of area)



OCEANA

DR.

R.M. 13-37



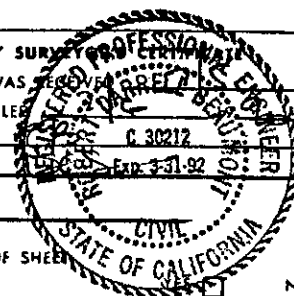
THIS CORNER RECORD WAS PREPARED BY ME OR UNDER MY DIRECTION IN CONFORMANCE WITH THE LAND SURVEYORS ACT ON May 1990

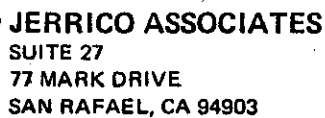
SIGNED: _____
L.S. or R.C.E. No.: _____

COUNTY SURVEYOR'S CERTIFICATE
THE CORNER RECORD WAS RECORDED AND EXAMINED AND FILED BY: _____ C 30212
TITLE: _____
DOCUMENT No. _____
STATEMENT ON BACK OF SHEET

NO ☐

STATEMENT ON BACK OF SHEET





6878

3/9

COUNTY OF Marin T. _____ R. _____ MERIDIAN _____ CALIFORNIA
CORNER TYPE: GOV'T. CORNER ☐ MEANDER ☐ RANCHO ☐ CONTROL ☐ OTHER ☐
CORNER IDENTIFICATION — DATE OF VISIT _____ 19____



PHYSICAL DESCRIPTION OF CORNER FOUND; EVIDENCE AND METHOD USED TO IDENTIFY OR REESTABLISH

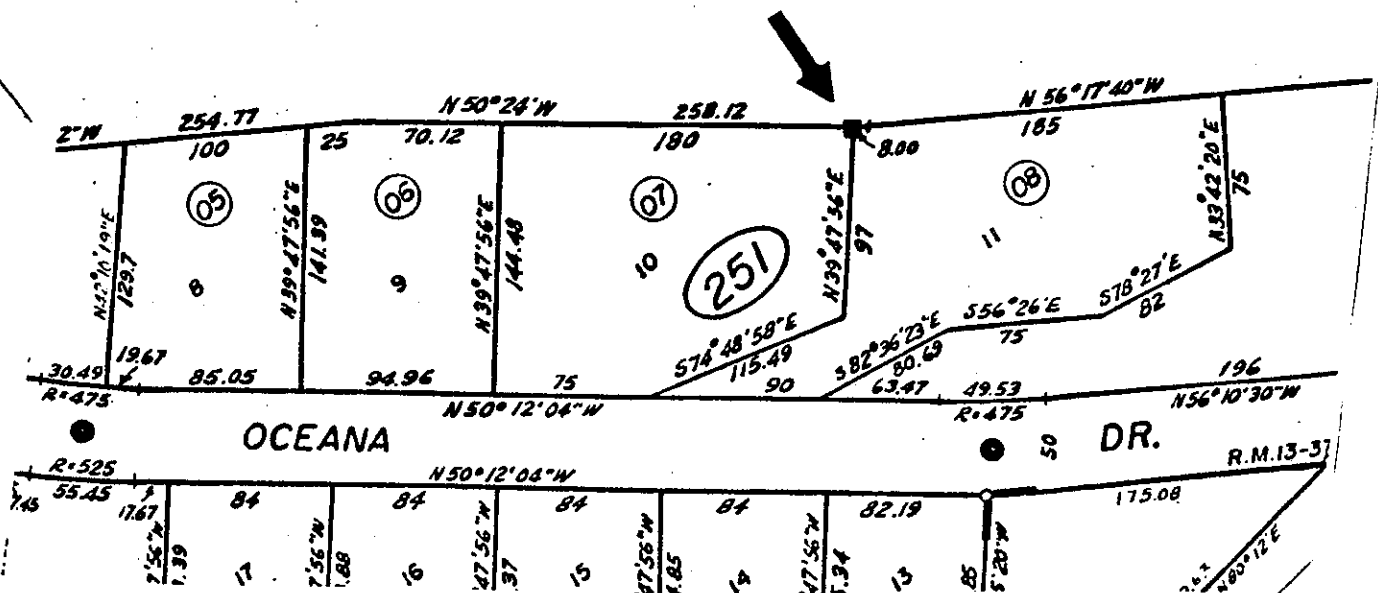
Meridian based on centerline monuments Oceana Marin 13 R.M. 37

PHYSICAL DESCRIPTION OF MONUMENTS, REBUILT OR PERPETUATED

■ Found 2"x 2" red-wood hub, at fence line, and set tag L.S. 3887 in it.

CALIFORNIA COORDINATE SYSTEM ORDER: FIRST ☐ SECOND ☐ THIRD ☐
STATIONS USED: NGS (USC & GS) ☐ STATE ☐ COUNTY ☐ OTHER ☐ STATION _____ STATION _____
ZONE _____ ELEVATION _____ NORTHINGS (Y) _____ EASTINGS (X) _____

SKETCH: (Include reference tie or witness points, remarks and topo of area)



SURVEYOR'S CERTIFICATE

THIS CORNER RECORD WAS PREPARED BY ME OR UNDER MY
DIRECTION IN CONFORMANCE WITH THE LAND SURVEYORS ACT
ON May 1960

SIGNED:

L.S. or R.C.E. No.:

COUNTY SHERIFF'S OFFICE
THE CORNER RECORD WAS RECEIVED
AND EXAMINED AND FILED

BY: _____

TITLE:

DOCUMENT No.

STATEMENT ON BACK OF SHEET

YES ☐ NO ☒



6878

4/9

PHYSICAL DESCRIPTION OF CORNER FOUND; EVIDENCE AND METHOD USED TO IDENTIFY OR REESTABLISH

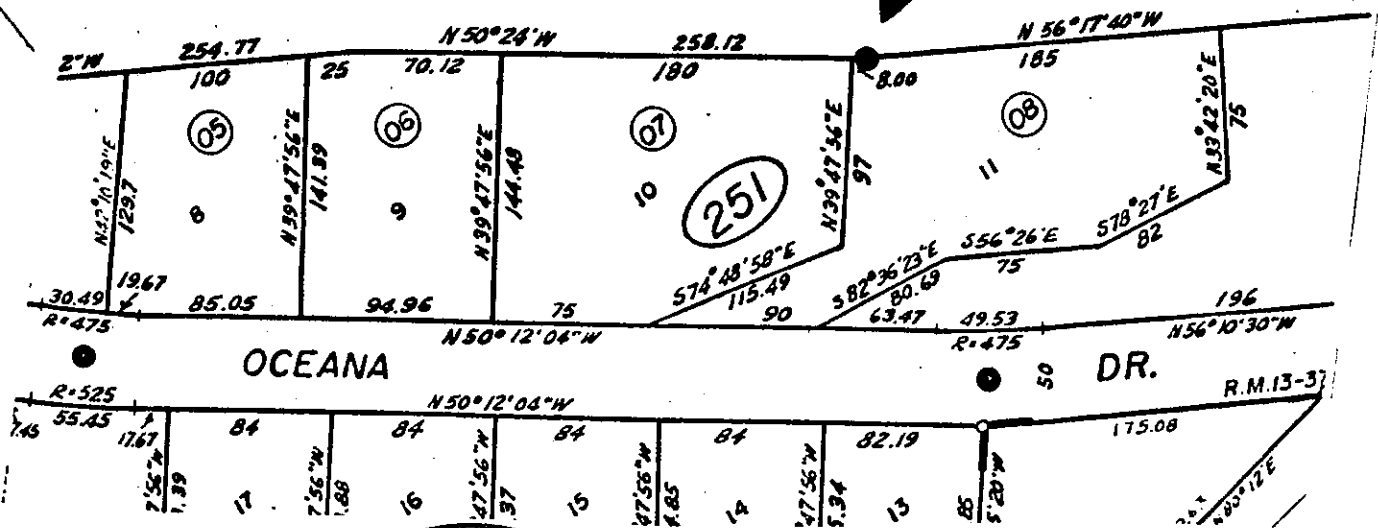
Meridian based on centerline monuments Oceana Marin 13 R.M. 37

PHYSICAL DESCRIPTION OF MONUMENTS RESULT OR PERPETUATED

Found 3/4" iron pipe, at fence angle point, with tag RCE 10057

CALIFORNIA COORDINATE SYSTEM ORDER: FIRST ☐ SECOND ☐ THIRD ☐
STATIONS USED: NGS (USC & GS) ☐ STATE ☐ COUNTY ☐ OTHER ☐ STATION _____ STATION _____
ZONE _____ ELEVATION _____ NORTHINGS (Y) _____ EASTINGS (X) _____

SKETCH: (Include reference tie or witness points, remarks and topo of area)



SURVEYOR'S CERTIFICATE

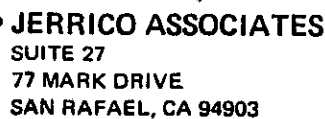
THIS CORNER RECORD WAS PREPARED BY ME OR UNDER MY
DIRECTION IN CONFORMANCE WITH THE LAND SURVEYORS ACT
ON May BRUNNER 90

SIGNED: CS 3887
L.S. or R.C.E. No.: CS 3887

COUNTY SURVEYORS' OFFICE
THE CORNER RECORD WAS RECOVERED BY _____ 1970
AND EXAMINED AND FILED _____
BY: _____ C 30212
TITLE: _____ EXP. 3-31-92
DOCUMENT No. _____ CIVIL
STATEMENT ON BACK OF SHEET

STATEMENT ON BACK OF SHEET

NO ☒

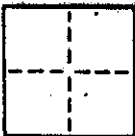


6878

CORNER RECORD

5/9

CORNER IDENTIFICATION -- DATE OF VISIT _____ 19____



CORNER — LEFT AS FOUND ☐ FOUND AND TAGGED ☐ REESTABLISHED OBLITERATED CORNER ☐ REBUILT ☐

PHYSICAL DESCRIPTION OF CORNER FOUND; EVIDENCE AND METHOD USED TO IDENTIFY OR REESTABLISH

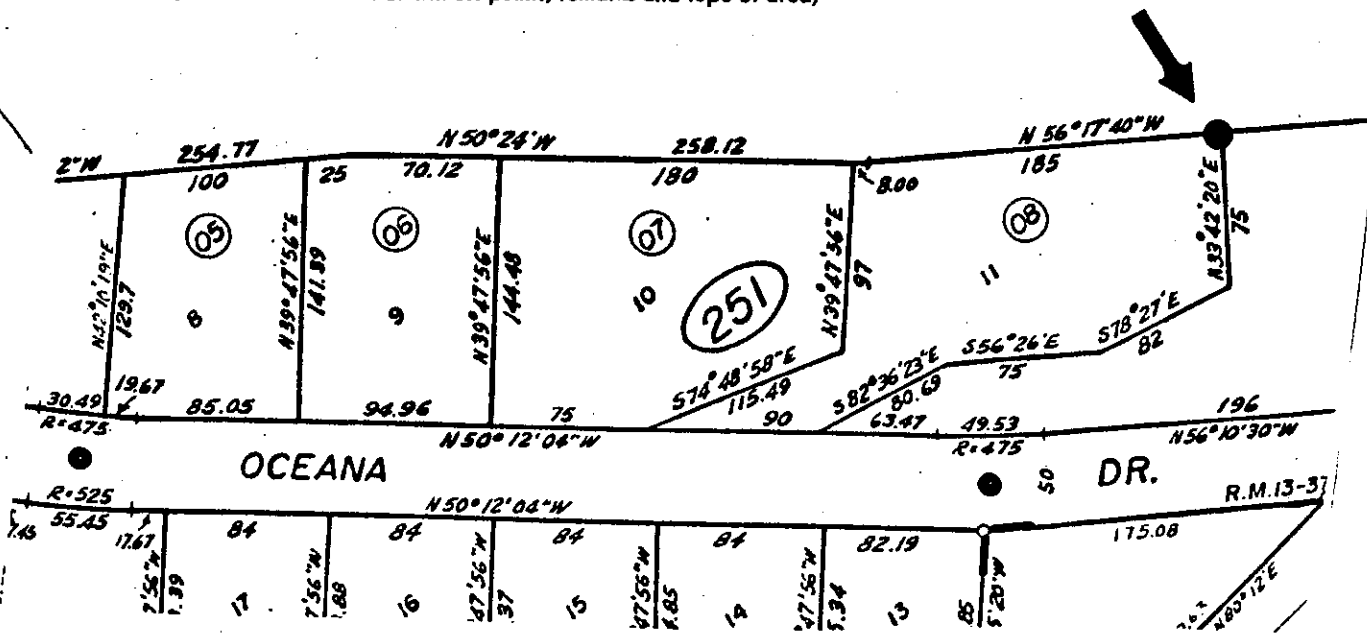
Meridian based on centerline monuments Oceana Marin 13 R.M. 37

PHYSICAL DESCRIPTION OF MONUMENTS, REBUILT OR PERPETUATED

Set rebar (#5) and cap L.S. 3887

CALIFORNIA COORDINATE SYSTEM ORDER: FIRST ☐ SECOND ☐ THIRD ☐
STATIONS USED: NGS (USC & GS) ☐ STATE ☐ COUNTY ☐ OTHER ☐ STATION _____ STATION _____
ZONE _____ ELEVATION _____ NORTHINGS (Y) _____ EASTINGS (X) _____

SKETCH: (Include reference tie or witness points, remarks and topo of area)



SURVEYORS CERTIFICATE

THIS CORNER RECORD WAS PREPARED BY ME OR UNDER MY
DIRECTION IN CONFORMANCE WITH THE LAND SURVEYORS ACT
ON May 19 1909 JEROME EDGORD

SIGNED
L.S. or R.C.E. No.

COUNTY SURVEYOR
THE CORNER RECORD WAS RECEIVED
AND EXAMINED AND FILED

BY: _____ (C 30212)
TITLE: _____ Exp. 3-31-92

DOCUMENT No.

STATEMENT ON BACK OF SHEET

No



JERRICO ASSOCIATES

SUITE 27

77-MARK DRIVE

SAN RAFAEL, CA 94903

100-251-08

6878

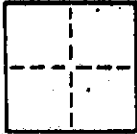
CORNER RECORD

6/9

COUNTY OF Marin T. _____ R. _____ MERIDIAN _____ CALIFORNIA

CORNER TYPE: GOV'T. CORNER ☐ MEANDER ☐ RANCHO ☐ CONTROL ☐ OTHER ☐

CORNER IDENTIFICATION — DATE OF VISIT _____ 19____



CORNER — LEFT AS FOUND ☐ FOUND AND TAGGED ☐ REESTABLISHED OBLITERATED CORNER ☐ REBUILT ☐

PHYSICAL DESCRIPTION OF CORNER FOUND; EVIDENCE AND METHOD USED TO IDENTIFY OR REESTABLISH

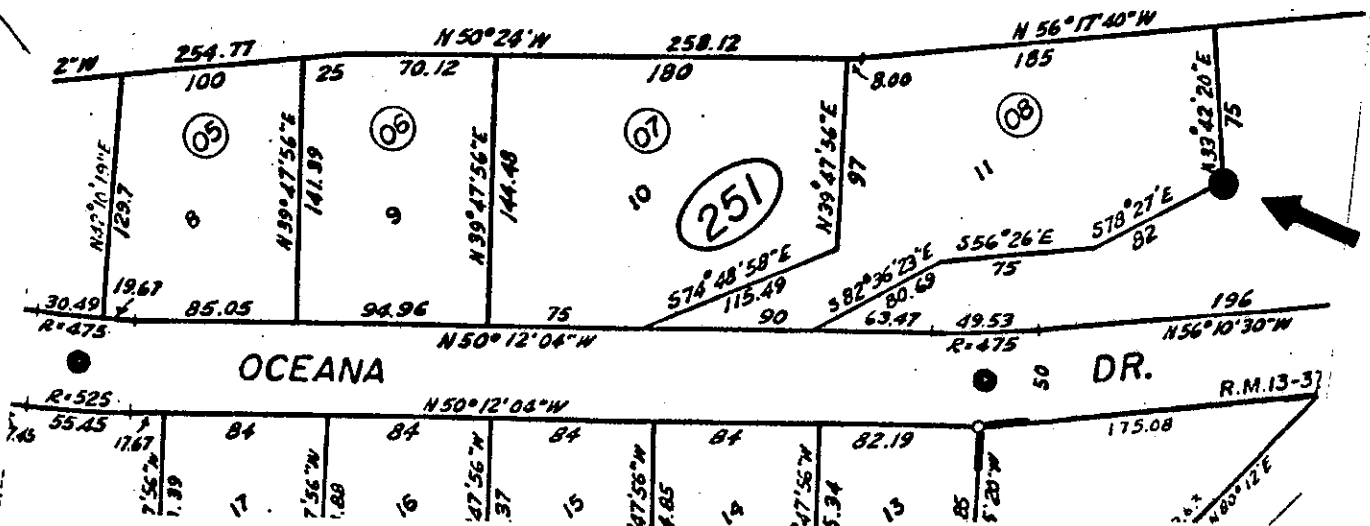
Meridian based on centerline monuments Oceana Marin 13 R.M. 37

PHYSICAL DESCRIPTION OF MONUMENTS, REBUILT OR PERPETUATED

➔ ● Set rebar (#5) and cap L.S. 3887

CALIFORNIA COORDINATE SYSTEM ORDER: FIRST ☐ SECOND ☐ THIRD ☐
STATIONS USED: NGS (USC & GS) ☐ STATE ☐ COUNTY ☐ OTHER ☐ STATION _____ STATION _____
ZONE _____ ELEVATION _____ NORTHINGS (Y) _____ EASTINGS (X) _____

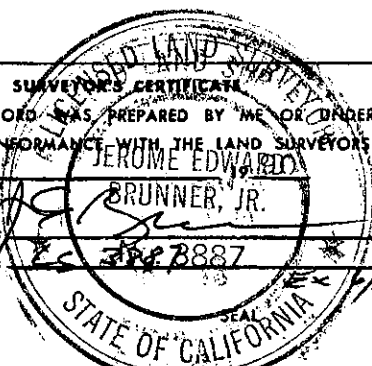
SKETCH: (Include reference tie or witness points, remarks and topo of area)



THIS CORNER RECORD WAS PREPARED BY ME OR UNDER MY DIRECTION IN CONFORMANCE WITH THE LAND SURVEYORS ACT ON May

SIGNED: _____

L.S. or R.C.E. No. _____



COUNTY SURVEYOR

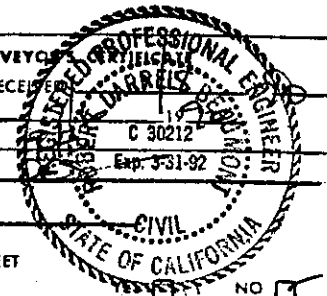
THE CORNER RECORD WAS RECEIVED AND EXAMINED AND FILED

BY: _____

TITLE: _____

DOCUMENT No. _____

STATEMENT ON BACK OF SHEET





JERRICO ASSOCIATES
SUITE 27
77 MARK DRIVE
SAN RAFAEL, CA 94903

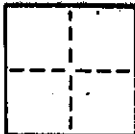
100-251-08

6878

CORNER RECORD

7/9

COUNTY OF Marin T. _____ R. _____ MERIDIAN CALIFORNIA
CORNER TYPE: GOVT. CORNER ☐ MEANDER ☐ RANCHO ☐ CONTROL ☐ OTHER ☐
CORNER IDENTIFICATION — DATE OF VISIT _____ 19____



CORNER — LEFT AS FOUND ☐ FOUND AND TAGGED ☐ REESTABLISHED OBLITERATED CORNER ☐ REBUILT ☐

PHYSICAL DESCRIPTION OF CORNER FOUND, EVIDENCE AND METHOD USED TO IDENTIFY OR REESTABLISH

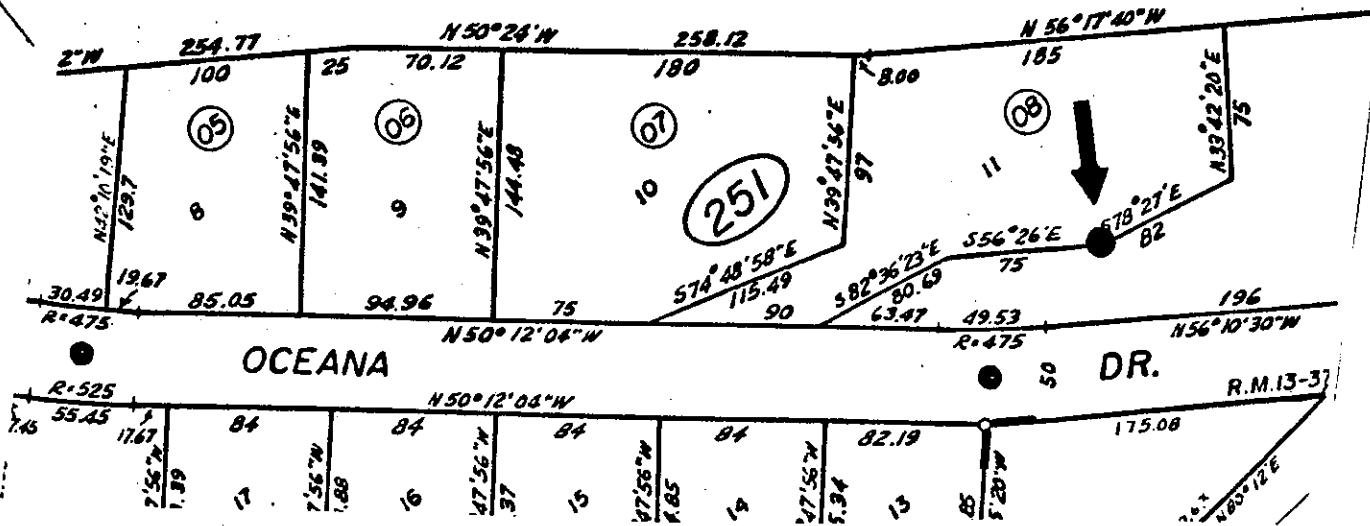
Meridian based on centerline monuments Oceana Marin 13 R.M. 37

PHYSICAL DESCRIPTION OF MONUMENTS REBUILT OR PERPETUATED

➔ ● Set rebar (#5) and cap L.S. 3887

CALIFORNIA COORDINATE SYSTEM ORDER: FIRST ☐ SECOND ☐ THIRD ☐
STATIONS USED: NGS (USC & GS) ☐ STATE ☐ COUNTY ☐ OTHER ☐ STATION _____ STATION _____
ZONE _____ ELEVATION _____ NORTHINGS (Y) _____ EASTINGS (X) _____

SKETCH: (Include reference tie or witness points, remarks and topo of area)



SURVEYOR'S CERTIFICATE

THIS CORNER RECORD WAS PREPARED BY ME OR UNDER MY DIRECTION IN CONFORMANCE WITH THE LAND SURVEYORS ACT ON MAY 1990

BRUNNER, JR.

SIGNED: _____

L.S. or R.C.E. No. _____

STATE OF CALIFORNIA

COUNTY SURVEYOR

THE CORNER RECORD WAS RECEIVED AND EXAMINED AND FILED

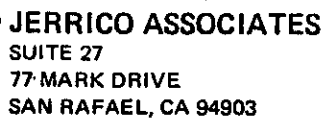
BY: _____

TITLE: _____

DOCUMENT No. _____

STATEMENT ON BACK OF SHEET





6878

CORNER RECORD

8/9

CORNER IDENTIFICATION -- DATE OF VISIT _____ 19__



CORNER — LEFT AS FOUND ☐ FOUND AND TAGGED ☐ REESTABLISHED OBLITERATED CORNER ☐ REBUILT ☐

PHYSICAL DESCRIPTION OF CORNER FOUND; EVIDENCE AND METHOD USED TO IDENTIFY OR REESTABLISH

Meridian based on centerline monuments Oceana Marin 13 R.M. 37

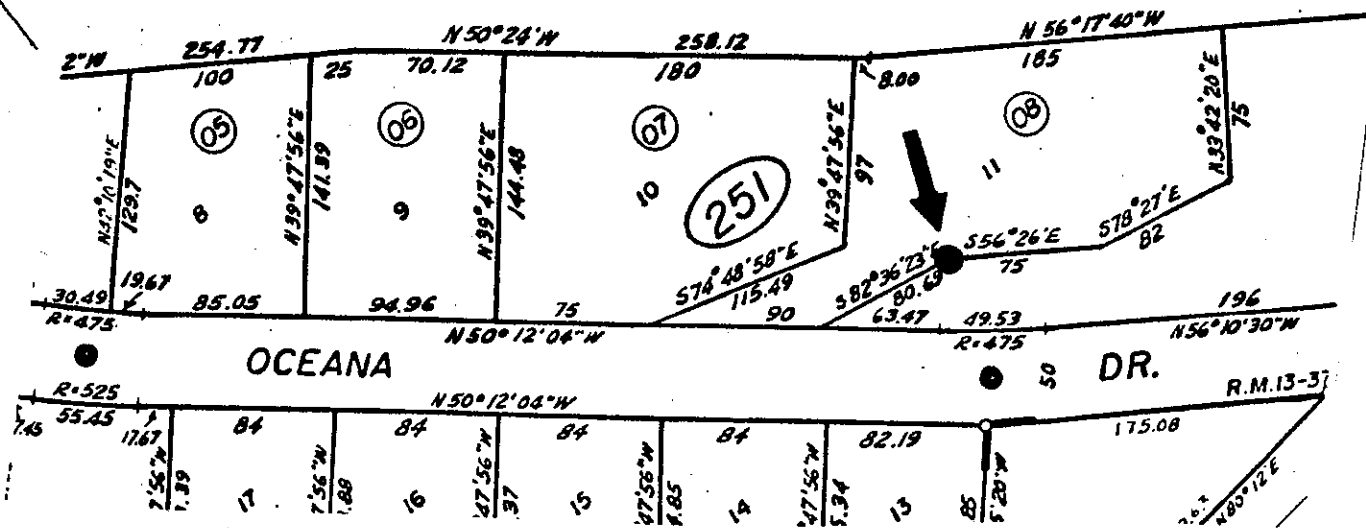
PHYSICAL DESCRIPTION OF MONUMENTS, RESULT OR PERPETUATED



Set rebar (#5) and cap L.S. 3887

CALIFORNIA COORDINATE SYSTEM ORDER: FIRST ☐ SECOND ☐ THIRD ☐
STATIONS USED: NGS (USC & GS) ☐ STATE ☐ COUNTY ☐ OTHER ☐ STATION _____ STATION _____
ZONE _____ ELEVATION _____ NORTHINGS (Y) _____ EASTINGS (X) _____

SKETCH: (Include reference tie or witness points, remarks and topo of area)



SURVEYOR'S CERTIFICATE

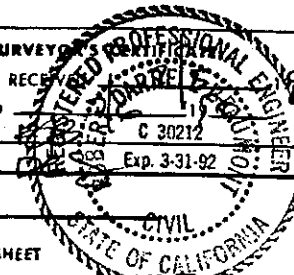
THIS CORNER RECORD WAS PREPARED BY ME OR UNDER MY
DIRECTION IN CONFORMANCE WITH THE LAND SURVEYORS ACT
ON May 10 1890

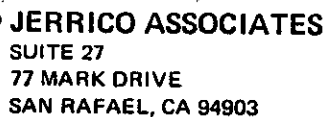
SIGNED: [Signature]
L.S. or R.C.E. No.: 3887

COUNTY SURVEYOR
THE CORNER RECORD WAS RECEIVED
AND EXAMINED AND FILED

BY: [Signature] C 30212
TITLE: [Signature] Exp. 3-31-92

DOCUMENT No. _____
STATEMENT ON BACK OF SHEET





6878

9/9

CORNER IDENTIFICATION — DATE OF VISIT _____ 19____



CORNER — LEFT AS FOUND ☐ FOUND AND TAGGED ☐ REESTABLISHED OBLITERATED CORNER ☐ REBUILT ☐

PHYSICAL DESCRIPTION OF CORNER FOUND, EVIDENCE AND METHOD USED TO IDENTIFY OR REESTABLISH

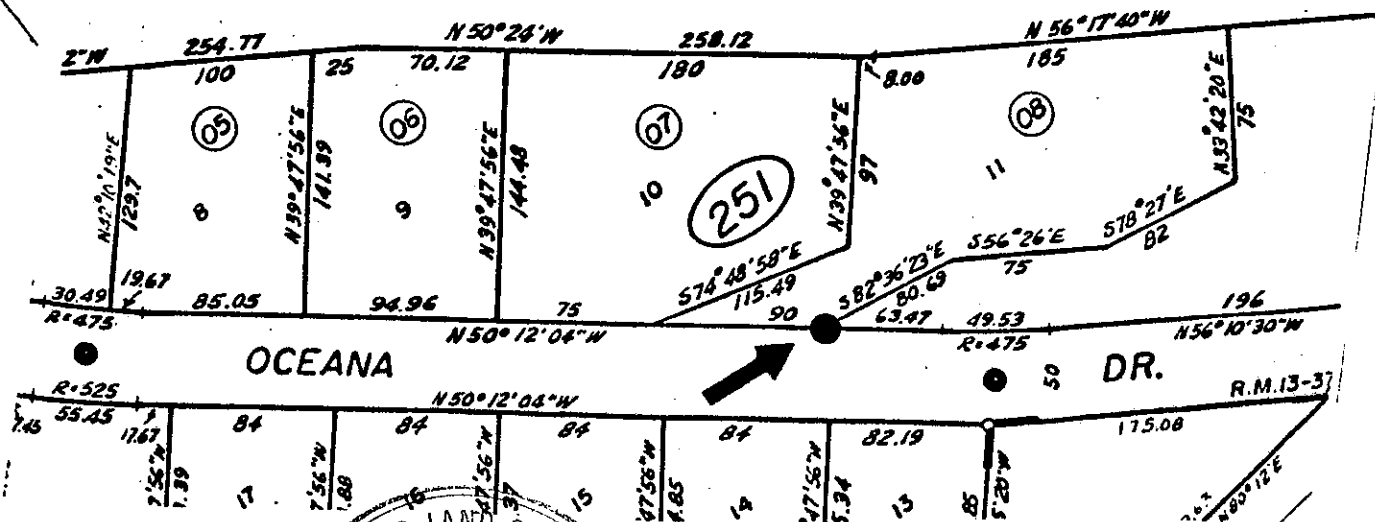
Meridian based on centerline monuments Oceana Marin 13 R.M. 37

PHYSICAL DESCRIPTION OF MONUMENTS, REBUILT OR PERPETUATED

Set rebar/and cap L.S. 3887 (#5)

CALIFORNIA COORDINATE SYSTEM ORDER: FIRST ☐ SECOND ☐ THIRD ☐
STATIONS USED: NGS (USC & GS) ☐ STATE ☐ COUNTY ☐ OTHER ☐ STATION _____ STATION _____
ZONE _____ ELEVATION _____ NORTHINGS (Y) _____ EASTINGS (X) _____

SKETCH: (Include reference tie or witness points, remarks and topo of area)



SURVEYOR'S CERTIFICATE
 THIS CORNER RECORD WAS PREPARED BY ME OR UNDER MY
 DIRECTION IN CONFORMANCE WITH THE LAND SURVEYORS ACT
 ON May 1990
 No. 3887

SIGNED:
L.S. or R.C.E. No. _____

COUNTY SURVEYOR'S PROFESSIONAL SEAL
 THE CORNER RECORD WAS RECEIVED _____
 AND EXAMINED AND FILED _____
 BY: _____ C 30212
 TITLE: _____ Exp 3-31-92

DOCUMENT No. _____
STATEMENT ON BACK OF SHEET

RECEIVED PROFESSIONAL ENGINEER
 ROBERT D. SMITH
 1992
 C 30212
 Exp. 3-31-92
 CIVIL
 STATE OF CALIFORNIA