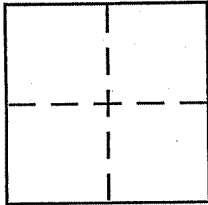


CORNER RECORD

Document Number 100-123-28City of Dillon BeachCounty of MARIN, CaliforniaBrief Legal Description Ocean View Avenue, Cliff to Park, see 2007 m 41

CORNER TYPE

Government Corner ☐ Control ☒
Meander ☐ Property ☐
Rancho ☐ Other ☐
Date of Survey _____

COORDINATES (Optional)

N. _____
E. _____
Zone _____ NAD27 ☐ NAD83 ☐
NAD83 Epoch _____
Elev. _____
Vert. Datum: NGVD29 ☐ NAVD88 ☐
Meas. Units: Metric ☐ Imperial ☐

Corner -- Left as found ☐ Found and tagged ☐ Established ☐ Reestablished ☐ Rebuilt ☒

Identification and type of corner found: Evidence used to identify or procedure used to establish or reestablish the corner:

Found concrete monuments as shown on 2007 MAPS 41
on Ocean View Avenue

See Sketch on Back

A description of the physical condition of the monument as found and as set or reset:

Monuments were on the surface, and being slowly
destroyed by vehicular Traffic.

Concrete monuments, marked A & B on back, replaced with County
Monuments

SURVEYOR'S STATEMENT

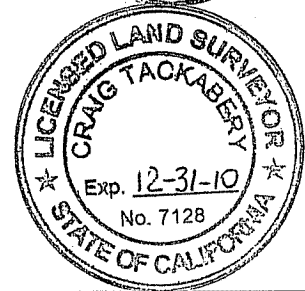
This Corner Record was prepared by me or under my direction in conformance with
the Land Surveyor's Act on Feb. 5, 2009

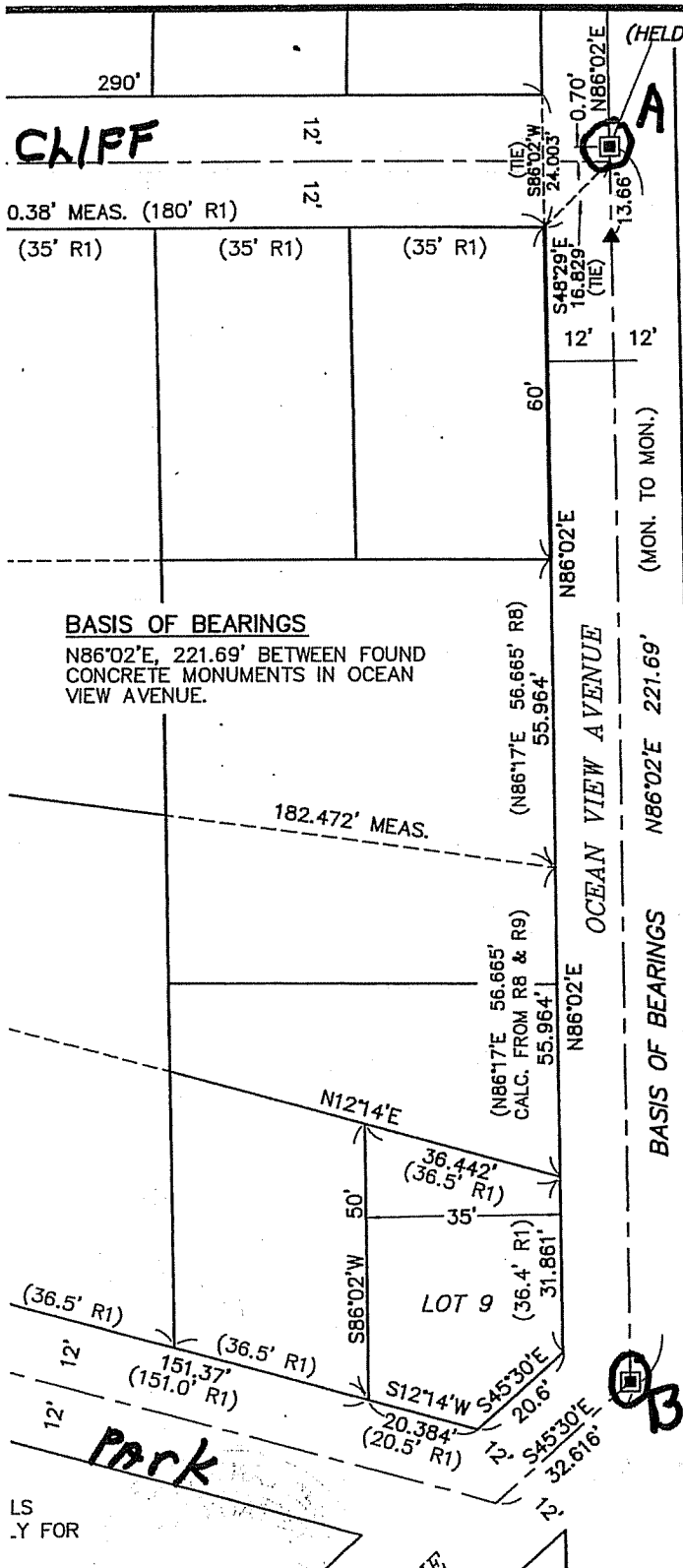
Signed Michael A. Brogan P.L.S. or R.C.E. No. LS 5767

Chief of Surveys - DPW Marin County
COUNTY SURVEYOR'S STATEMENT

This Corner Record was received FEBRUARY 5, 2009and examined and filed MARCH 3, 2009Signed [Signature] P.L.S. or R.C.E. No. 7128Title COUNTY SURVEYOR

County Surveyor's Comment _____





SURVEYOR'S STATEMENT

THIS MAP CORRECTLY REPRESENTS A SURVEY MADE BY ME OR UNDER MY DIRECTION IN CONFORMANCE WITH THE REQUIREMENTS OF THE PROFESSIONAL LAND SURVEYORS' ACT AT THE REQUEST OF PAUL HARTSOUGH IN NOVEMBER, 2006.

David Contreras

DAVID L. CONTRERAS

L.S. 5065



COUNTY SURVEYOR'S STATEMENT

THIS MAP HAS BEEN EXAMINED IN ACCORDANCE WITH SECTION 8766 OF THE PROFESSIONAL LAND SURVEYORS' ACT THIS 12 TH DAY OF FEBRUARY, 2007.

Craig Tackabery

CRAIG TACKABERY - COUNTY SURVEYOR



COUNTY RECORDER'S STATEMENT

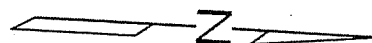
FILED THIS 16 DAY OF FEB., 2007, AT 11:50 A.M., IN BOOK 2007 OF MAPS, AT PAGE 41, AT THE REQUEST OF THE MARIN COUNTY DEPARTMENT OF PUBLIC WORKS. SERIAL NO. 2007-0007906 FEE: \$10-

Joan C. Hager

COUNTY RECORDER

Don Wylie

BY DEPUTY



RECORD OF SURVEY

LANDS OF HARTSOUGH

O.R. 2004-65827

BEING LOT 6 BLOCK, K AND A PORTION OF THE UNDESIGNATED AREA TO THE EAST, AS SHOWN ON "SUBDIVISION NO.2, DILLON'S BEACH" FILED IN VOLUME 4 OF MAPS, PAGE 5

2007 MAPS 41