

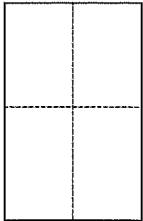
CORNER RECORD

Document Number 088-274-13

City of Corte Madera

County of Marin, California

Brief Legal Description Lot 54, "Mariner Highlands", Book 11 of maps, at Page 22, MCR



CORNER TYPE

Government Corner Control
Meaneder Property
Rancho Other
Date of Survey 06/04/2014

COORDINATES (Optional)

N. _____
E. _____
Zone _____ NAD27 NAD83
NAD83 Epoch _____
Elev. _____
Vert. Datum: NGVD29 NAVD88
Meas. Units: Metric Imperial

Corner - Left as found Found and tagged Established Reestablished Rebuilt

Identification and type of corner found: Evidence used to identify or procedure used to establish or reestablish the corner:

Original Street Monuments per "Mariner Highlands", 11 RM 22, were found in record position and used to reestablish the location of Lot 54.

A description of the physical condition of the monument as found and as set or reset:

Set 1/2" iron pipes w/cap LS 7237, at the most easterly and southerly corners of Lot 54 (see page two).

SURVEYOR'S STATEMENT

This Corner Record was prepared by me or under my direction in conformance with

the Land Surveyor's Act on 6-13-2014

Signed Michael E. Ford P.L.S. or R.C.E. No. 7237



COUNTY SURVEYOR'S STATEMENT

This Corner Record was received 6-19-14

and examined and filed July 21, 2014

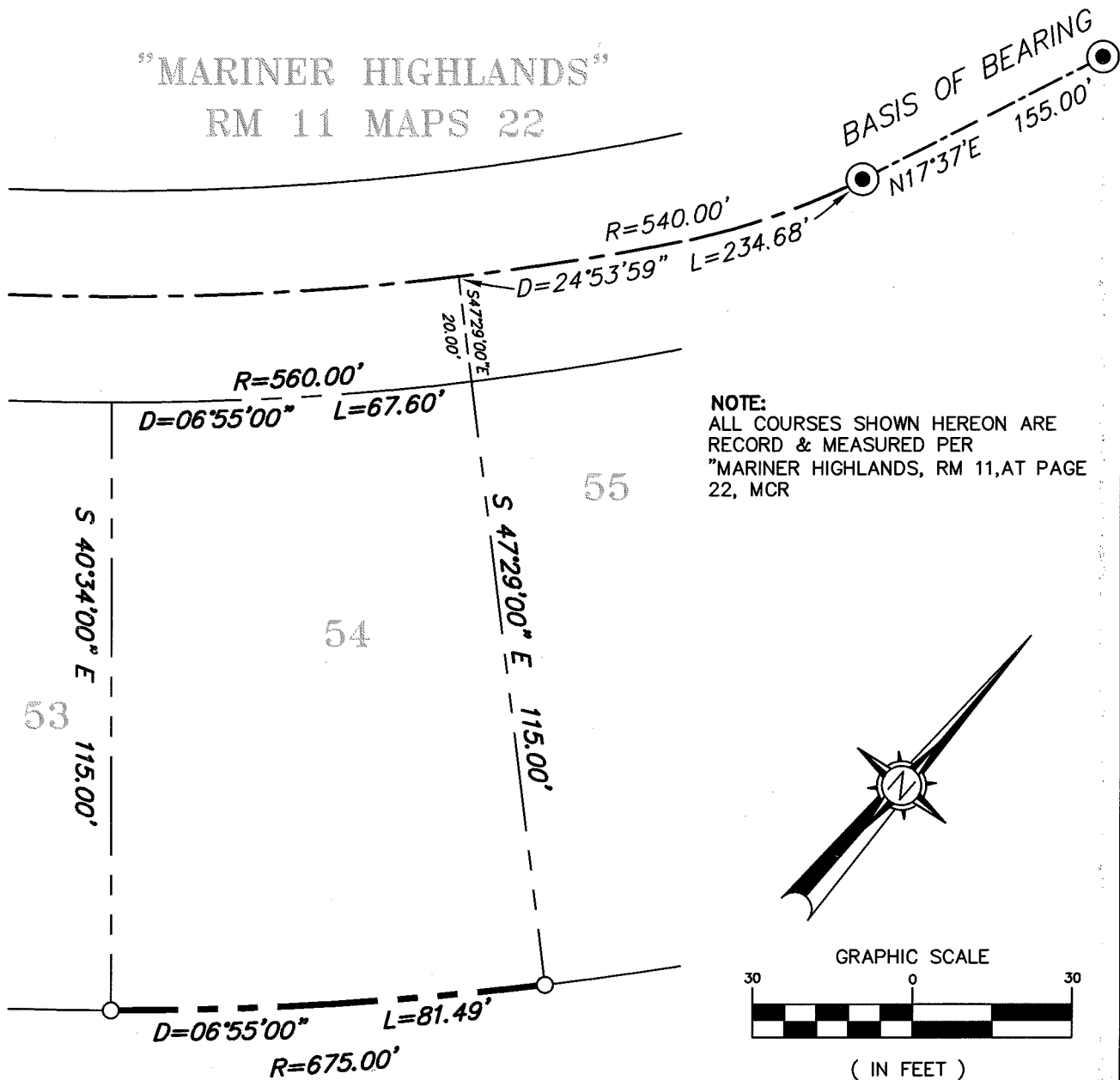
Signed Richard G. Simonitch P.L.S. or R.C.E. No. 7821

Title DEPUTY

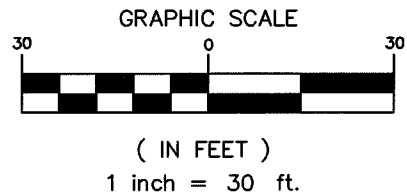
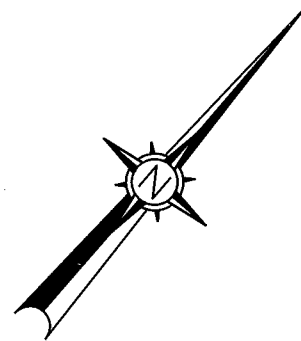


County Surveyor's Comment

"MARINER HIGHLANDS"
RM 11 MAPS 22



NOTE:
ALL COURSES SHOWN HEREON ARE
RECORD & MEASURED PER
"MARINER HIGHLANDS, RM 11, AT PAGE
22, MCR



LEGEND

- SET 1/2" IRON PIPE, LS 7237
- STANDARD STREET MONUMENTS

BASIS OF BEARINGS

$N17^{\circ}37'E$ BETWEEN FOUND STANDARD STREET
MONUMENTS AS SHOWN ON MAP OF "MARINER
HIGHLANDS", BOOK 11, AT PAGE 22, M.C.R.

michael ford inc.
land surveying

2300 bethards drive, suite J
santa rosa, california 95405
p 707.542.8513 - f 707.542.1825
www.michaelfordinc.com