

CORNER RECORD

Agency Index

21-025

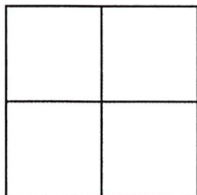
Document Number

075-312-05 ADJ-A

City of Greenbrae

County of Marin, California

Brief Legal Description Centerline monument of Via La Paz per 10 Maps 01, Marin County Records.



CORNER TYPE

- Government Corner
- Meander
- Rancho
- Control
- Property
- Other

Date of Survey February 19, 2021

COORDINATES (Optional)

- N. _____ E. _____
- Elevation _____
- Units Metric U.S. Survey Foot
- Horizontal Datum _____
- Zone _____ Epoch Date _____
- Vertical Datum _____
- Complies with Public Resources Code §§8801-8819
- Complies with Public Resources Code §§8890-8902

- PLS Act Ref: 8765(d) 8771 8773 Other:
- Corner/Monument: Left as found Established Rebuilt Pre-Construction
 Found and tagged Reestablished Referenced Post-Construction

Narrative of corner identified and monument as found, set, reset, replaced, or removed:

See sheet #2 for description(s) :

Utilized reference points as established in the pre-construction Corner Record #20-78 as filed in the Office of the Marin County Surveyor to set a 2" brass disc within a City Standard Monument Well stamped "LS 6421". Said mounment marks a point of curvature of the centerline of Via La Paz, 145± feet northerly of the intersection with Via Barranca as shown per Book 10 of Maps at Page 01, Marin County Records.

SURVEYOR'S STATEMENT

This Corner Record was prepared by me or under my direction in conformance with the Professional Land Surveyors' Act on February 22nd, 2021.
Signed [Signature] P.L.S. or R.C.E. No. P.L.S. 6421



COUNTY SURVEYOR'S STATEMENT

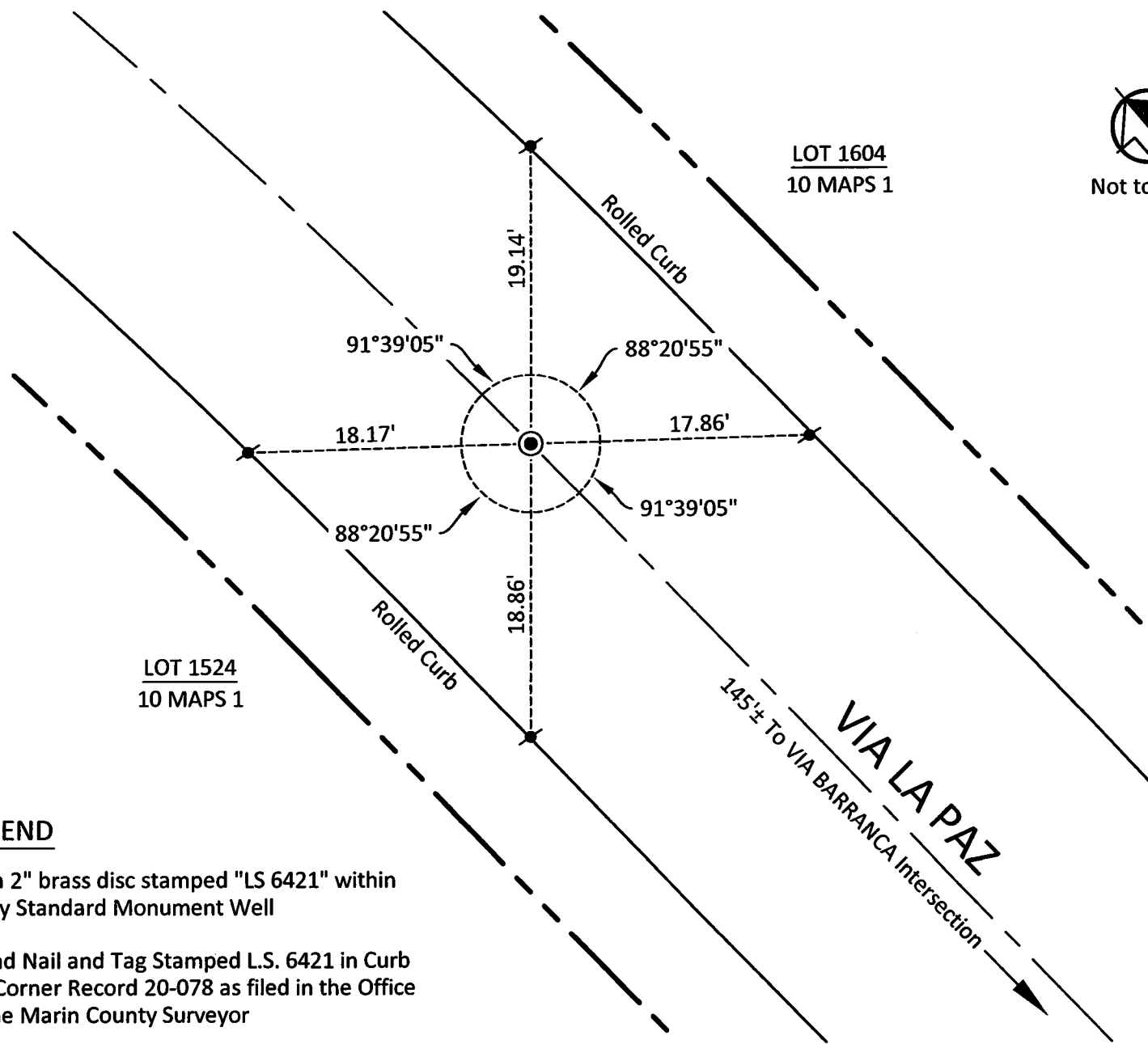
This Corner Record was received 3 - 2 - 21 and examined and filed 5 - 12 - 21.
Signed [Signature] P.L.S. or R.C.E. No. 9292
Title DEPUTY
County Surveyor's Comment _____



LOT 1604
10 MAPS 1



Not to Scale



LOT 1524
10 MAPS 1

LEGEND

- Set a 2" brass disc stamped "LS 6421" within a City Standard Monument Well
- ⚓ Found Nail and Tag Stamped L.S. 6421 in Curb per Corner Record 20-078 as filed in the Office of the Marin County Surveyor