

CORNER RECORD

Agency Index 21-158

Document Number APN 075-280-03

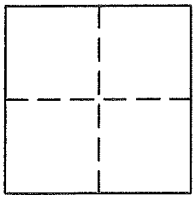
City of KENTFIELD

County of MARIN, California

Brief Legal Description PCL 1, 17 PM 22

CORNER TYPE

COORDINATES (Optional)



- Government Corner
- Meander
- Rancho
- Control
- Property
- Other

Date of Survey 10-21-19

N. _____ E. _____
 Elevation _____
 Units: Metric U.S. Survey Foot
 Horizontal Datum: _____
 Zone _____ Epoch Date _____
 Vert. Datum: _____
 Complies with Public Resources Code §§8801-8819
 Complies with Public Resources Code §§8890-8902

PLS Act Ref.: 8765(d) 8771 8773 Other

Corner/Monument: Left as found Established Rebuilt Pre-Construction
 Found and tagged Reestablished Referenced Post-Construction

Narrative of Corner identified and monument as found, reset, replaced, or removed.

See sheet #2 for description(s):

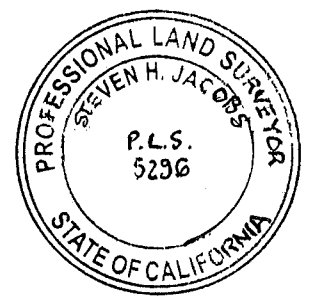
RECOVERED MONUMENTS AS SHOWN ON 17 PM 22 AND ON CORNER RECORD SUBMITTED FOR APN 075-214-05 AS SHOWN ON REVERSE.

SET 3/4" IP AND TAG PLS 5296 AS SHOWN ON REVERSE.

SURVEYOR'S STATEMENT

This Corner record was prepared by me or under my direction in conformance with the Land Surveyor's Act on NOVEMBER 6, 2019

Signed [Signature] P.L.S. or R.C.E. No. PLS 5296



COUNTY SURVEYOR'S STATEMENT

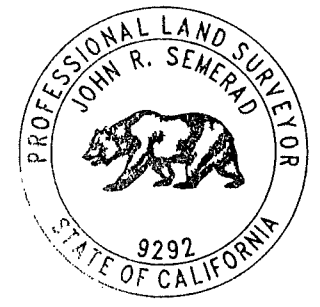
This Corner Record was received 10-21-21

and examined and filed 1-31-22

Signed [Signature] P.L.S. or R.C.E. No. 9292

Title DEPUTY

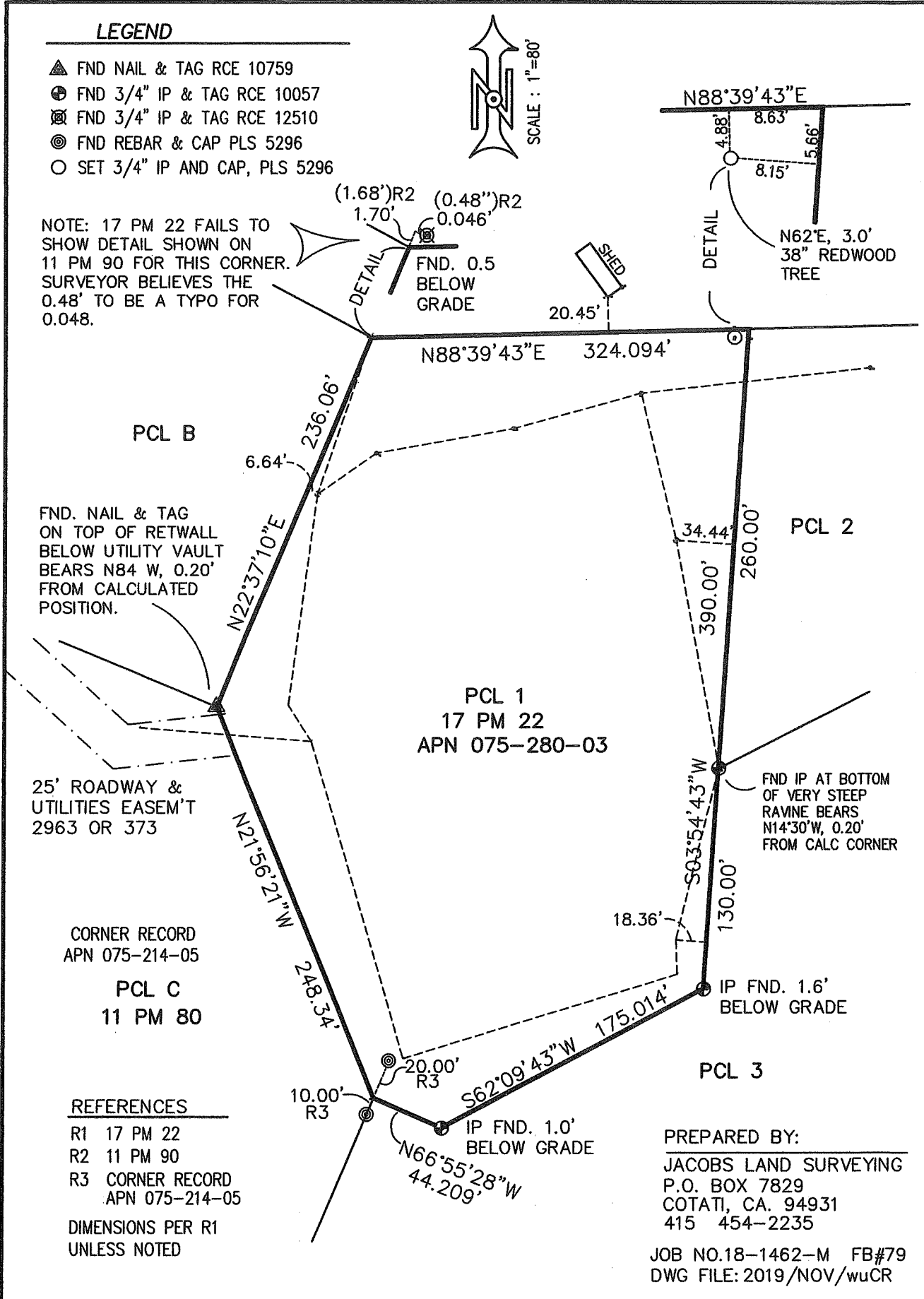
County Surveyor's Comment



LEGEND

- ▲ FND NAIL & TAG RCE 10759
- ⊕ FND 3/4" IP & TAG RCE 10057
- ⊗ FND 3/4" IP & TAG RCE 12510
- ⊙ FND REBAR & CAP PLS 5296
- SET 3/4" IP AND CAP, PLS 5296

NOTE: 17 PM 22 FAILS TO SHOW DETAIL SHOWN ON 11 PM 90 FOR THIS CORNER. SURVEYOR BELIEVES THE 0.48' TO BE A TYPO FOR 0.048.



FND. NAIL & TAG ON TOP OF RETWALL BELOW UTILITY VAULT BEARS N84° W, 0.20' FROM CALCULATED POSITION.

25' ROADWAY & UTILITIES EASEM'T 2963 OR 373

CORNER RECORD APN 075-214-05

PCL C
11 PM 80

REFERENCES

- R1 17 PM 22
- R2 11 PM 90
- R3 CORNER RECORD APN 075-214-05

DIMENSIONS PER R1 UNLESS NOTED

PCL 1
17 PM 22
APN 075-280-03

PCL 2

PCL 3

PREPARED BY:
JACOBS LAND SURVEYING
P.O. BOX 7829
COTATI, CA. 94931
415 454-2235

JOB NO.18-1462-M FB#79
DWG FILE: 2019/NOV/wuCR