

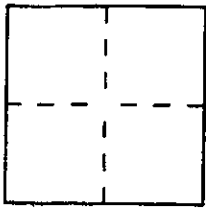
CORNER RECORD

Document Number APN 075-272-01

City of KENTFIELD

County of MARIN, California

Brief Legal Description LOT 587 "MAP OF KENT WOODLANDS..." 17 M 6



CORNER TYPE

Government Corner Control
 Meander Property
 Rancho Other
 Date of Survey _____

COORDINATES (Optional)

N. _____
 E. _____
 Zone _____ Datum _____
 Elev. _____

Corner — Left as found Found and tagged Established Reestablished Rebuilt

Identification and type of corner found: Evidence used to identify or procedure used to establish or reestablish the corner:
SEE PAGE 2

A description of the physical condition of the monument as found and as set or reset:
SEE PAGE 2

SURVEYOR'S STATEMENT

This Corner Record was prepared by me or under my direction in conformance with the Land Surveyors' Act on MAY 19, 2000 19__.

Signed [Signature] L.S. or R.C.E. Number PLS 6784



COUNTY SURVEYOR'S STATEMENT

This Corner Record was received MAY 25, 2000 19__ and examined and filed MAY 21, 2000 19__.

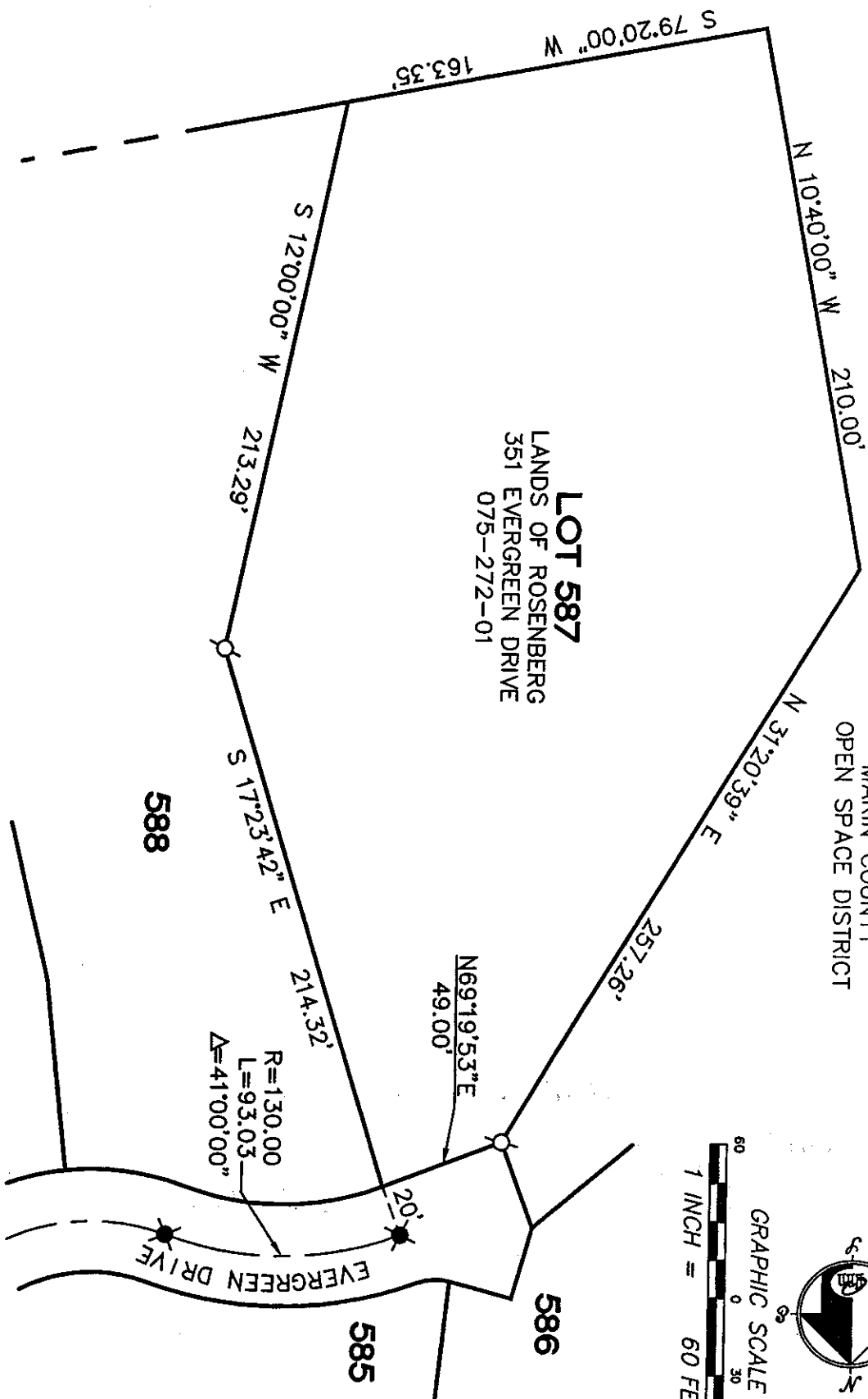
Signed [Signature] Title DEPUTY



County Surveyor's Comment _____

PARCEL A
MARIN COUNTY
OPEN SPACE DISTRICT

LOT 587
LANDS OF ROSENBERG
351 EVERGREEN DRIVE
075-272-01



REFERENCE

"MAP OF KEND WOODLANDS SUB'D NO TWENTY...COUNTY OF MARIN, CALIFORNIA" FILED FOR RECORD AUGUST 19, 1977, IN VOLUME 17 OF MAPS, AT PAGE 6, MARIN COUNTY RECORDS.

LEGEND

○ FOUND CITY MONUMENT
 ○ SET 1" IRON PIPE WITH CAP, PLS 6784

NOTES

1. RECORD=MEASURED
2. EASEMENTS NOT SHOWN

CORNER RECORD



MERIDIAN SURVEYING
 102 LYON STREET
 SAN RAFAEL, CA 94133
 (415) 440-4131
 info@meridiansurvey.com

100 DRAKES LANDING RD, #164
 GREENVILLE, CA 94023
 (415) 481-1241